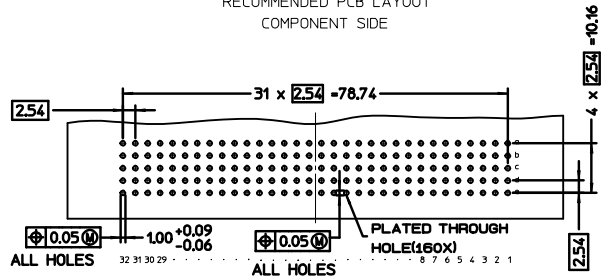


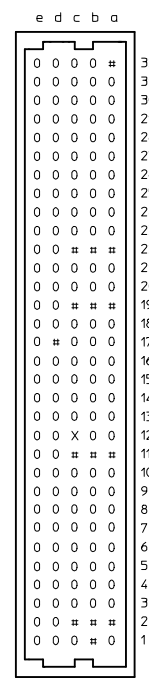
TERMINAL TYPE (CPF)  
COMPLIANT PRESSFIT

RECOMMENDED PCB LAYOUT  
COMPONENT SIDE



NOTE:

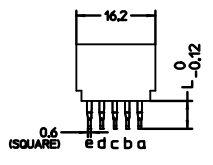
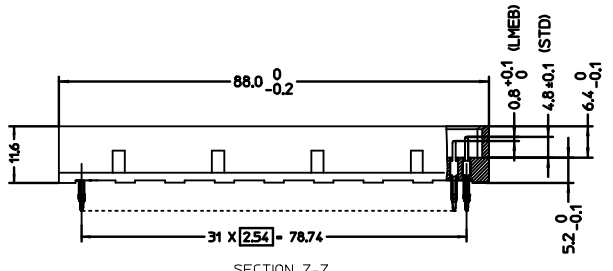
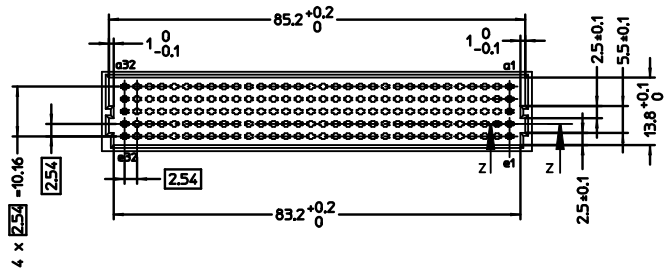
- 1) MATERIAL:-  
HOUSING : THERMOPLASTIC POLYESTER, GLASS FILLED, UL94V-0  
COLOUR: PEBBLE GREY, RAL 7032  
  
TERMINAL - PHOSPHOR BRONZE
- 2) FINISH:  
CONTACT ZONE : 30 MICRO INCH MIN Au (APPLIED OVER 3.8 MM MIN ALONG PIN)  
UNIFORMLY APPLIED OVER 50 MICROINCH MIN NICKEL (Ni)  
  
PRESSFIT ZONE : 40 MICROINCH MIN OF TIN-LEAD (SnPb)
- 3) CONNECTOR MUST MEET BELLCORE GR1217-CORE UNCONTROLLED ENVIRONMENT LEVEL 3 REQUIRED
- 4) CUT FACES OF TIP WITHOUT PLATING PERMITTED
- 5) MATERIAL NUMBER, BATCHCODE SHALL BE PRINTED ON THE CONNECTOR
- 6) PRODUCT SPECIFICATION : PS-36577-001



PIN STAGING INSERTION TABLE

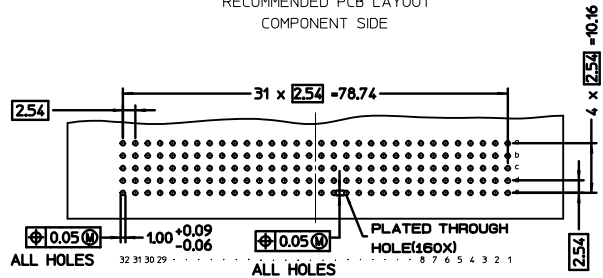
CONTACT LENGTH	TERMINAL LENGTH (L)	TERMINAL TYPE	SYMBOL
LMEB 4.0 MM	4.0 MM	CPF	0
STD 4.8 MM	4.0 MM	CPF	#
NO PIN N/A	NO PIN	NONE	X

EC NO. 2001-0073 DATE: 24/06/03 CHKD: S APPR: J 3	QUALITY SYMBOLS MAJOR CRITICAL RELY	GENERAL TOLERANCES: (UNLESS SPECIFIED)	SCALE: 2:1 DESIGN UNITS: mm INCH	DRAWN BY & DATE: S.S 03/04/03 CHECKED BY & DATE: G.L 03/04/03 APPROVED BY & DATE: G.L 03/04/03	DIMENSIONS: THRD ANGLE: mm INCH mm ONLY	SHT: 1 OF 1 REV: CAD ONLY
		4 PLACES 3 PLACES 2 PLACES 1 PLACE	mm INCH +0.05 +0.10 +0.15	ANGULAR: ±2° DRAFT WHERE APPLICABLE MUST REMAIN WITHIN DIMENSIONS	CAD FILENAME: SD-36577-002.MI	MATERIAL NO.: 36577-0002 DRAWING NO.: SD-36577-002



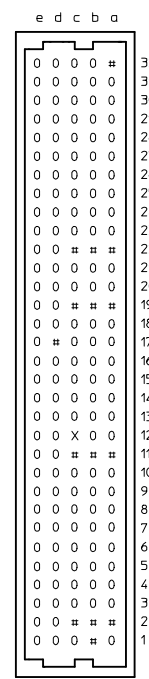
TERMINAL TYPE (CPF)  
COMPLIANT PRESSFIT

RECOMMENDED PCB LAYOUT  
COMPONENT SIDE



NOTE:

- 1) MATERIAL:-  
HOUSING : THERMOPLASTIC POLYESTER, GLASS FILLED, UL94V-0  
COLOUR: PEBBLE GREY, RAL 7032  
  
TERMINAL - PHOSPHOR BRONZE
- 2) FINISH:  
CONTACT ZONE : 30 MICRO INCH MIN Au (APPLIED OVER 3.8 MM MIN ALONG PIN)  
UNIFORMLY APPLIED OVER 50 MICROINCH MIN NICKEL (Ni)  
  
PRESSFIT ZONE : 40 MICROINCH MIN OF TIN-LEAD (SnPb)
- 3) CONNECTOR MUST MEET BELLCORE GR1217-CORE UNCONTROLLED ENVIRONMENT LEVEL 3 REQUIRED
- 4) CUT FACES OF TIP WITHOUT PLATING PERMITTED
- 5) MATERIAL NUMBER, BATCHCODE SHALL BE PRINTED ON THE CONNECTOR
- 6) PRODUCT SPECIFICATION : PS-36577-001



PIN STAGING INSERTION TABLE

CONTACT LENGTH	TERMINAL LENGTH (L)	TERMINAL TYPE	SYMBOL
LMEB 4.0 MM	4.0 MM	CPF	0
STD 4.8 MM	4.0 MM	CPF	#
NO PIN N/A	NO PIN	NONE	X

EC NO. 2001-0073 EC NO. S 24/06/03 CHNG. S 24/06/03 APPROV. 24/06/03 RELY	QUALITY SYMBOLS MAJOR CRITICAL	GENERAL TOLERANCES: (UNLESS SPECIFIED) mm    INCH	SCALE DESIGN UNITS 2 : 1    mm    INCH	DIMENSIONS: THRD ANGLE PROJECTION mm    INCH    mm    INCH    mm    INCH	SHT    REV REVISE ON CAD ONLY		
	DRAWN BY & DATE S.S    03/04/03 CHECKED BY & DATE G.L    03/04/03 APPROVED BY & DATE G.L    03/04/03	TITLE: ASSEMBLY DIN 41612, R MALE, 5 ROW, 160 POS, PRESSFIT WITHOUT MOUNTING HOLES	<b>MOLEX INCORPORATED</b>		CAD FILENAME SD-36577-002.MI	MATERIAL NO. 36577-0002	DRAWING NO. SD-36577-002
DRAFT WHERE APPLICABLE MUST REMAIN WITHIN DIMENSIONS		THIS DRAWING CONTAINS INFORMATION THAT IS PROPRIETARY TO MOLEX INCORPORATED AND SHOULD NOT BE USED WITHOUT WRITTEN PERMISSION.					