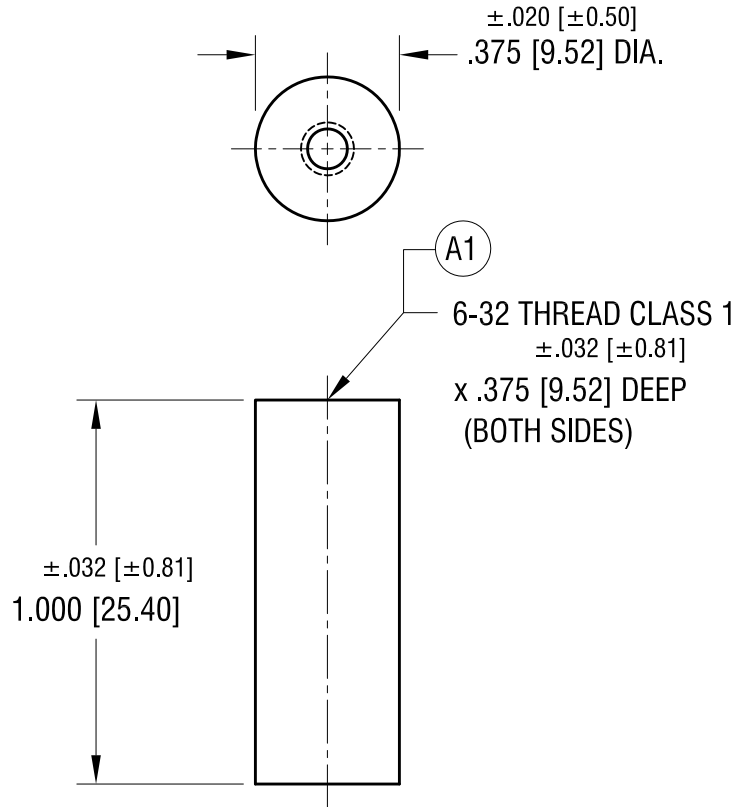
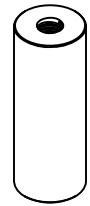


THIS DOCUMENT IS THE PROPERTY OF
KEYSTONE ELECTRONICS CORP. AND
SHALL NOT BE REPRODUCED, DISTRIBUTED
OR USED AS A BASIS FOR MANUFACTURE
WITHOUT PRIOR WRITTEN PERMISSION
FROM KEYSTONE ELECTRONICS CORP.

ACTUAL SIZE



NOTE:

1. MARKED WITH NL #: NL523W01-008

3.30.22	(A1) WAS .375±.020 DEEP CHANGE AS PER ECN 22-065	A
DATE	DESCRIPTION	REV.

KEYSTONE ELECTRONICS CORP.			
www.keyelco.com • NEW HYDE PARK NY 11040 • Tel (516)328-7500			
PART NAME		CERAMIC STANDOFF	
MATERIAL		GRADE L5 CERAMIC	
FINISH		DRN BY	DATE
GLAZED		BOONE	2.09.98
		APP'D	SCALE
TOLERANCES INCH [MM]		RH	2 X
		DWG NO.	
DECIMAL	± .005 [± 0.13]	CODE	7666
ANGULAR	± 1°	C	
UNLESS OTHERWISE SPECIFIED			