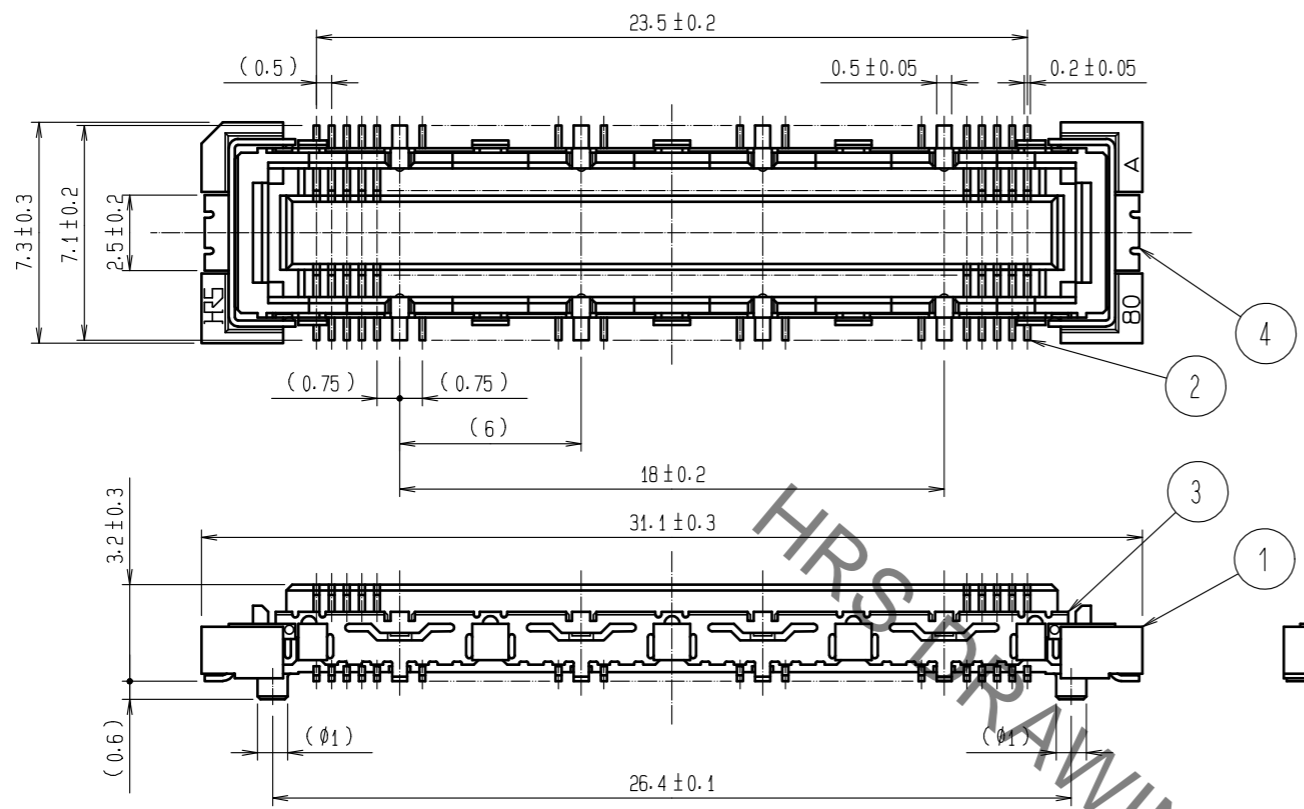
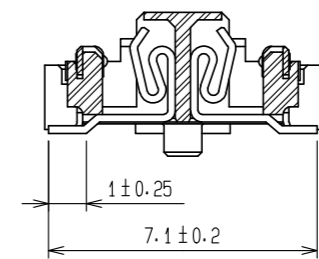


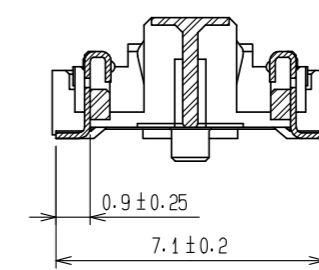
Apr.1.2023 Copyright 2023 HIROSE ELECTRIC CO., LTD. All Rights Reserved.
 In case of consideration for using Automotive equipment / device which demand high reliability, kindly contact our sales window correspondents.



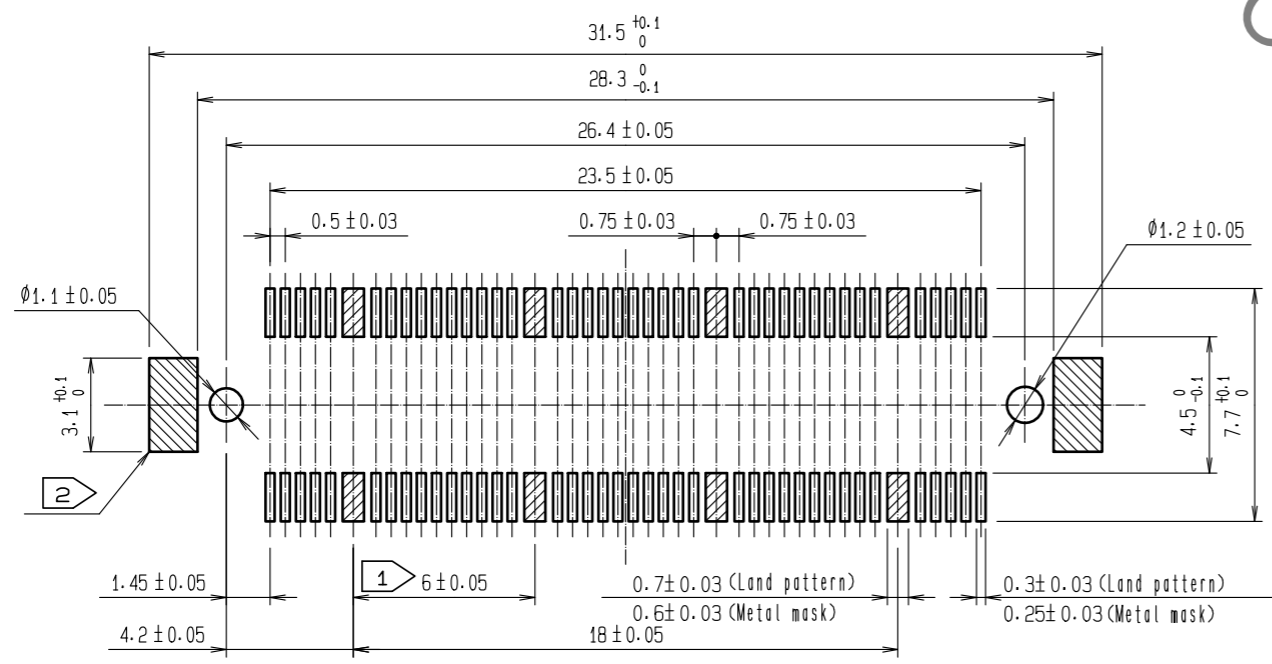
Cross cut section - signal (5:1)



Cross cut section - ground (5:1)



Recommended land pattern dimension of PCB
 (Recommended metal mask thickness : 0.15mm)

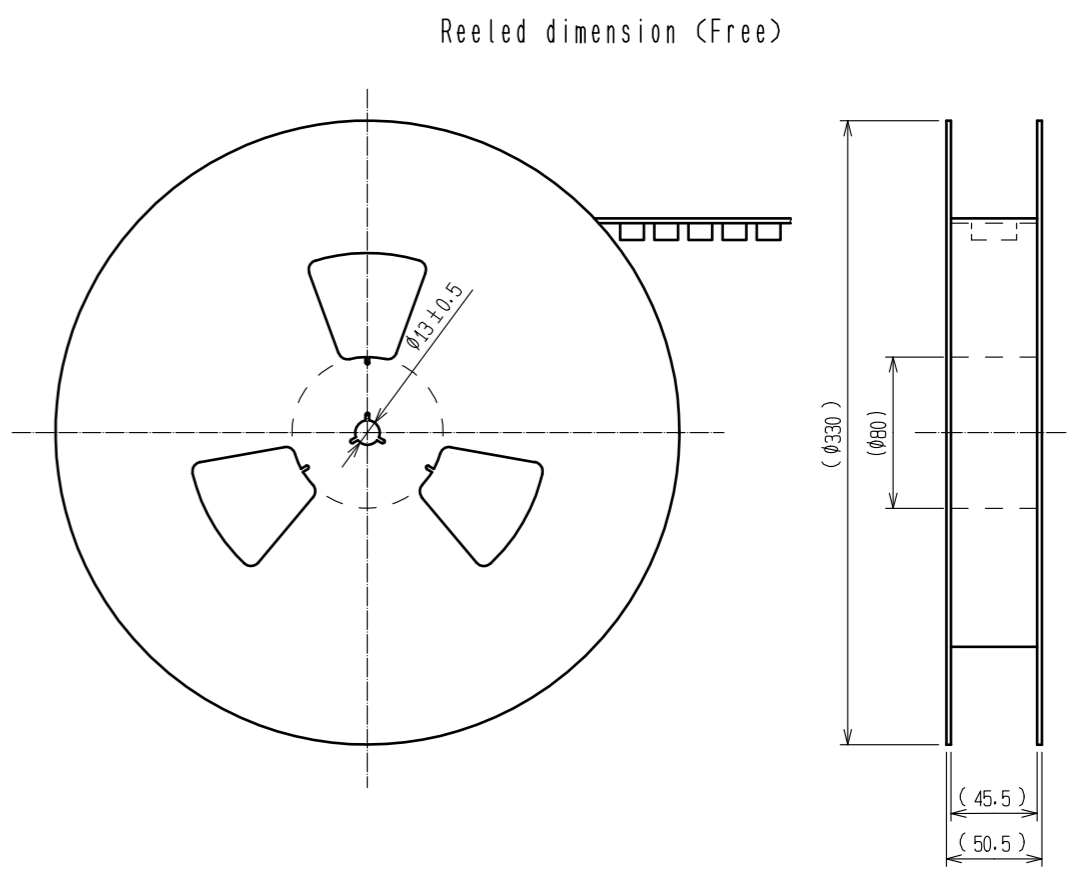
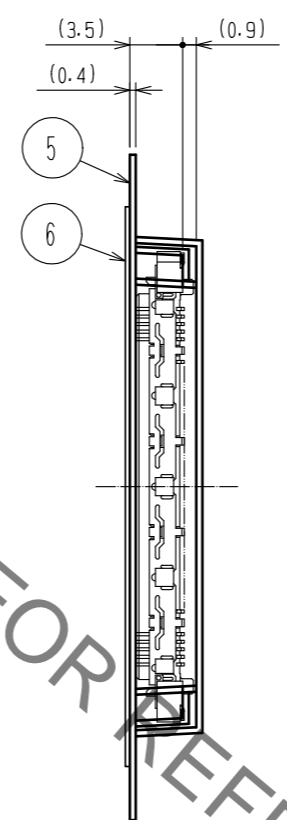
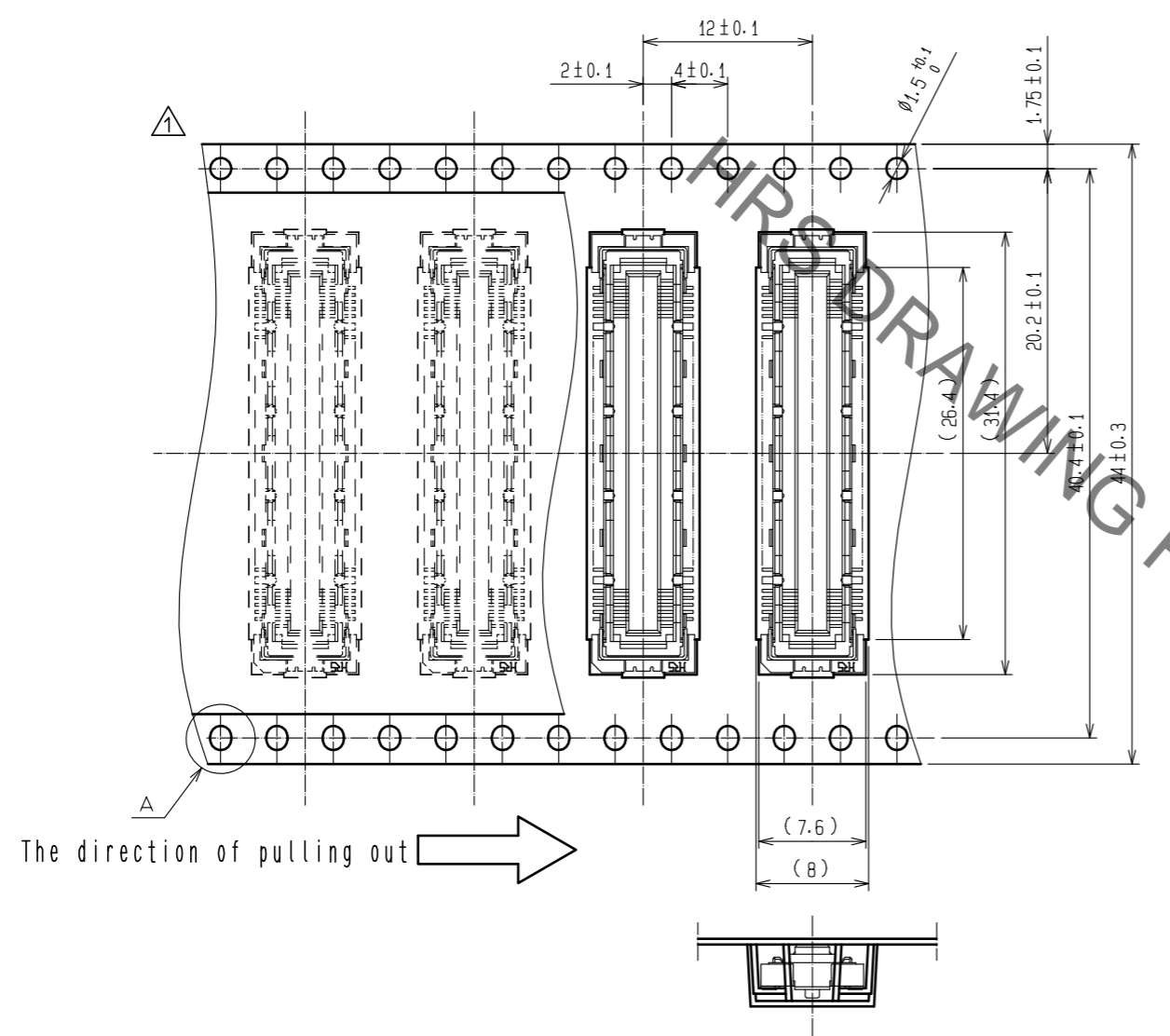


- Notes
- 1 8 hatched parts : ground circuit.
 - 2 2 hatched parts : ground circuit.
 - 3 SMT lead-coplanarity : 0.1 max.
 - 4 This product has no polarity to pattern for mounting.
 - 5 Emboss carrier tape package is applied on this product. Please refer to the sheet 2/2 for the details.
 - 6 The dimensions in parentheses are for reference.

2	Phosphor blonze	Contact area : Gold 0.1 μm min	6	Polyester	(Top cover tape)		
		Lead area : Gold 0.05 μm min	5	Polyethylene	(Emboss carrier tape)		
1	LCP	Under plating : Nickel 1 μm min	4	Phosphor blonze	Tin - plating		
		Beige UL94V-0	3	Phosphor blonze	Tin - plating		
NO.	MATERIAL	FINISH . REMARKS	NO.	MATERIAL	FINISH . REMARKS		
UNITS mm		SCALE 4 : 1	COUNT 1	DESCRIPTION OF REVISIONS DIS-F-00011032	DESIGNED MT. ITANO	CHECKED HT. YAMAGUCHI	DATE 20211007
HRS HIROSE ELECTRIC CO., LTD.		APPROVED : HS. OKAWA	20080603	DRAWING NO. EDC3-151976-21			
		CHECKED : HS. OZAWA	20080603	PART NO. FX10A-80S/8-SV(91)			
		DESIGNED : SY. KAMIGA	20080603	CODE NO. CL0570-0201-4-91			
		DRAWN : HK. SUNADORI	20080602				

Apr.1.2023 Copyright 2023 HIROSE ELECTRIC CO., LTD. All Rights Reserved.
 In case of consideration for using Automotive equipment / device which demand high reliability, kindly contact our sales window correspondents.

Drawing for packing (2:1)



A (5:1)

- Notes
- 7 1 reel : 1,000 connectors.
 - 8 Minimum 10 compartments from both reel ends remain empty.
 - 9 This product has no polarity to tape and reel packaging.
 - 10 The dimensions in parentheses are for reference.

HRS	DRAWING NO.	EDC3-151976-21	
	PART NO.	FX10A-80S/8-SV(91)	
	CODE NO.	CL0570-0201-4-91	