

NOTES:

1. Ⓢ REPRESENTS A CRITICAL DIMENSION.
2. POSITIONS -04 THRU -50 ARE TO BE TUBED.
3. POSITIONS 02 & 03 ARE TO BE LAYERED PACKAGED.
4. MAXIMUM CUT FLASH: .010[.25].
5. STAKED ALIGNMENT PIN USED AT SAMTECS DISCRETION.
6. MEASURE THE HEIGHT FROM THE EDGE, NOT THE BREAK OFF.
7. MEASURED AT BEND RADIUS, NOT END OF PIN.
8. DUE TO THE HIGH AMOUNT OF INSERTION FORCE NEEDED, THE -LC OPTION IS NOT COMPATIBLE WITH AUTO PLACEMENT. SAMTEC RECOMMENDS MANUAL PLACEMENT FOR ALL ASSEMBLIES WITH THE -LC OPTION.
9. MINIMUM PUSHOUT FORCE: .5 LB.
10. NOTE DELETED.

DO NOT SCALE FROM THIS PRINT

SQW-1XX-01-XXX-D-VS-XX-XXX

No OF POSITIONS
-02 THRU -50
(PER ROW)
LEAD STYLE
-01

POLARIZATION OPTION
-XXX: INDICATES POSITION POLARIZED
(USE PK-07-N, SEE FIG 2, SHT 2)

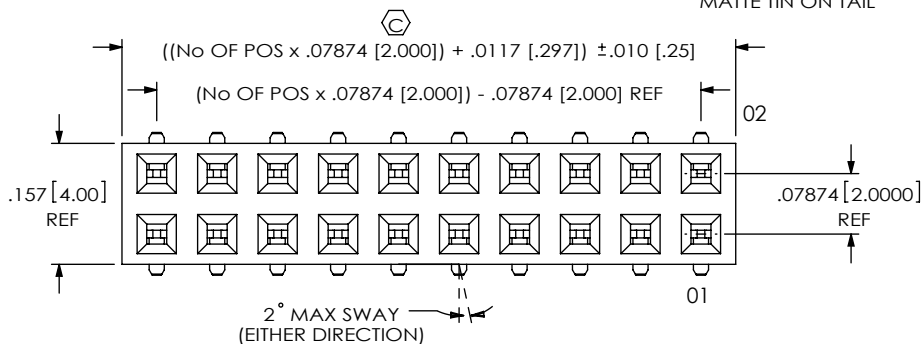
OPTION
-A: STAKED & MOLDED IN ALIGNMENT PIN
(5 POS MIN) (USE SM-A8H, SEE FIG 3, SHT 2)
-LC: LOCKING CLIP (5 POS MIN)
(USE LC-07-TM, SEE FIG 4, SHT 2 & NOTE 8)
-P: PICK & PLACE PAD (4 POS MIN)
(USE LMP-03, SEE FIG 6, SHT 2)
-TR: TAPE & REEL
(AVAILABLE POS 4 THRU 28)
-K: POLYAMIDE FILM PAD (4 POS MIN)
(USE K-DOT-.167-.281-.005, SEE FIG 7, SHT 2)

PLATING SPECIFICATION

- F: 3μ" FLASH SELECTIVE GOLD IN CONTACT AREA MATTE TIN ON TAIL
- L: 10μ" LIGHT SELECTIVE GOLD IN CONTACT AREA MATTE TIN ON TAIL
- S: 30μ" SELECTIVE GOLD IN CONTACT AREA MATTE TIN ON TAIL
- STL: 30μ" SELECTIVE GOLD IN CONTACT AREA TIN/LEAD (93/7+/-5%) TAIL
- H: 30μ" HEAVY GOLD IN CONTACT AREA 3μ" ON TAIL
- FM: 3μ" FLASH SELECTIVE GOLD IN CONTACT AREA MATTE TIN ON TAIL
- LM: 10μ" LIGHT SELECTIVE GOLD IN CONTACT AREA MATTE TIN ON TAIL
- SM: 30μ" SELECTIVE GOLD IN CONTACT AREA MATTE TIN ON TAIL

TAIL STYLE
-VS: VERTICAL

ROW SPECIFICATION
-D: DOUBLE (USE SQW-XX-D)



| No OF POS | COPLANARITY |
|--------------|-------------|
| -02 THRU -10 | .004[0.10] |
| -11 THRU -50 | .006[0.15] |

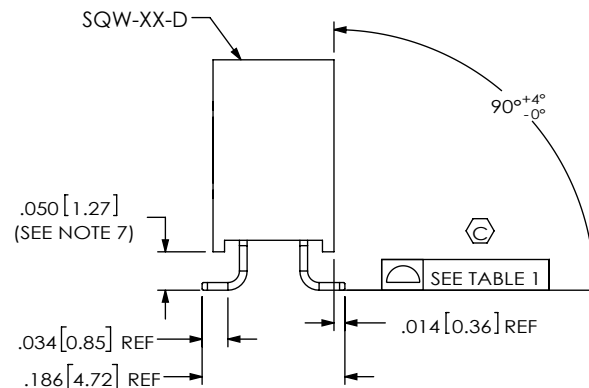
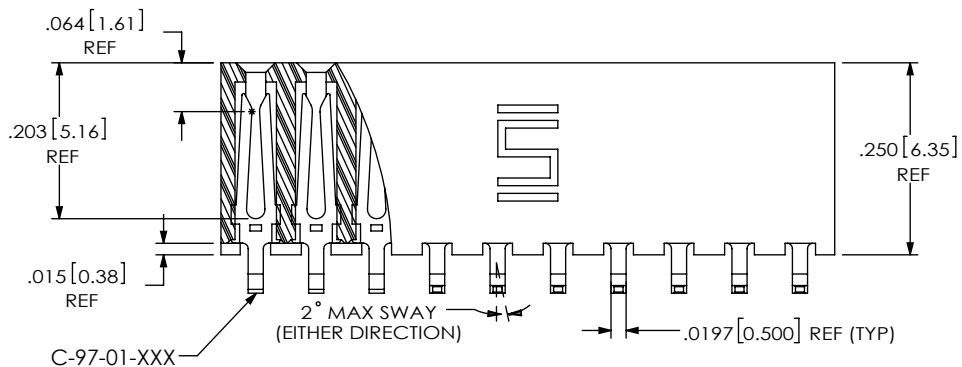
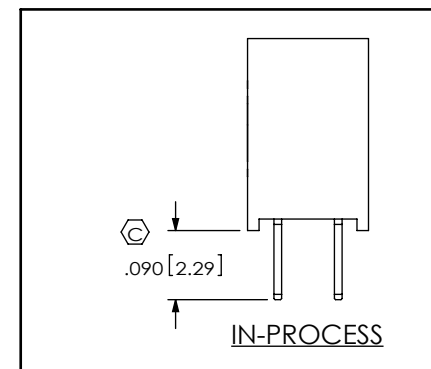


FIG 1
SQW-110-01-XXX-D-VS SHOWN

UNLESS OTHERWISE SPECIFIED, DIMENSIONS ARE IN INCHES. TOLERANCES ARE:
DECIMALS ANGLES
.XX: ±.01 [.3]
.XXX: ±.005 [.13]
.XXXX: ±.0020 [.051]

PROPRIETARY NOTE
THIS DOCUMENT CONTAINS CONFIDENTIAL AND PROPRIETARY INFORMATION AND ALL DESIGN, MANUFACTURING, REPRODUCTION, USE, PATENT RIGHTS AND SALES RIGHTS ARE EXPRESSLY RESERVED BY SAMTEC, INC. THIS DOCUMENT SHALL NOT BE DISCLOSED, IN WHOLE OR PART, TO ANY UNAUTHORIZED PERSON OR ENTITY NOR REPRODUCED, TRANSFERRED OR INCORPORATED IN ANY OTHER PROJECT IN ANY MANNER WITHOUT THE EXPRESS WRITTEN CONSENT OF SAMTEC, INC.



520 PARK EAST BLVD, NEW ALBANY, IN 47150
PHONE: 812-944-6733 FAX: 812-948-5047
e-Mail info@SAMTEC.com code 55322

MATERIAL: DO NOT SCALE DRAWING SHEET SCALE: 4:1
INSULATOR: LCP, UL 94 VO, COLOR: BLACK
TERMINAL: PHOSPHOR BRONZE

DESCRIPTION:
2MM SOCKETS TRIP ASSEMBLY

DWG. NO.
SQW-1XX-01-XXX-D-VS-XX-XXX

BY: DEAN P 04/22/1997 SHEET 1 OF 3

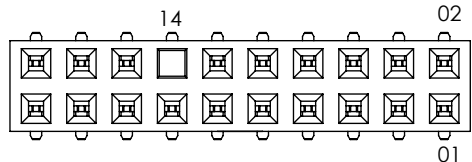


FIG 2
 POLARIZATION OPTION LOCATION
 INSERT PK-07-N INTO SPECIFIED
 POSITION AND BREAK OFF TAB
 SQW-110-01-XXX-D-VS-014 SHOWN
 (DIFFERENT AS SHOWN, OTHERWISE SAME AS FIG 1)

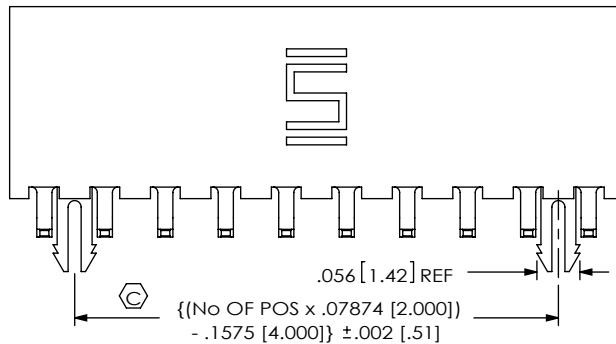


FIG 4
 -LC: LOCKING CLIP
 (5 POS MIN)
 SQW-110-01-XXX-D-VS-LC SHOWN
 (DIFFERENT AS SHOWN, OTHERWISE SAME AS FIG 1)

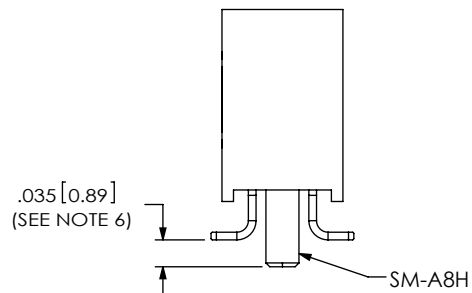
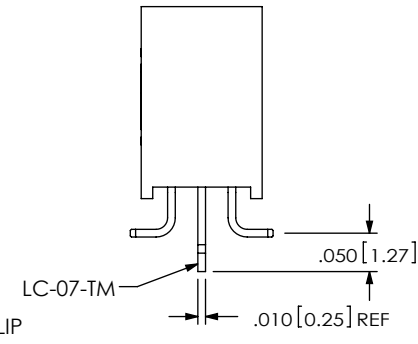


FIG 3
 -A: STAKED ALIGNMENT PIN
 (5 POS MIN)
 SQW-110-01-XXX-D-VS-A SHOWN
 (DIFFERENT AS SHOWN, OTHERWISE SAME AS FIG 1)

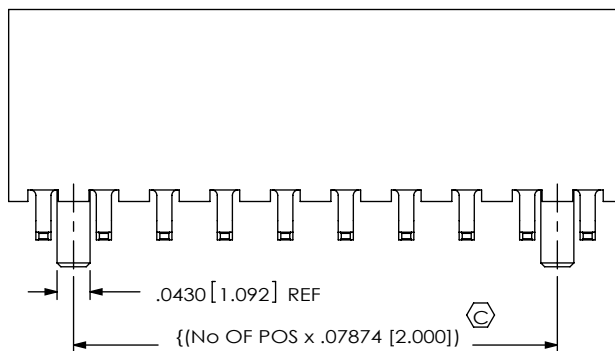


FIG 5
 -A: MOLDED ALIGNMENT PIN
 (5 POS MIN)
 SQW-110-01-XXX-D-VS-A SHOWN
 (DIFFERENT AS SHOWN, OTHERWISE SAME AS FIG 1)

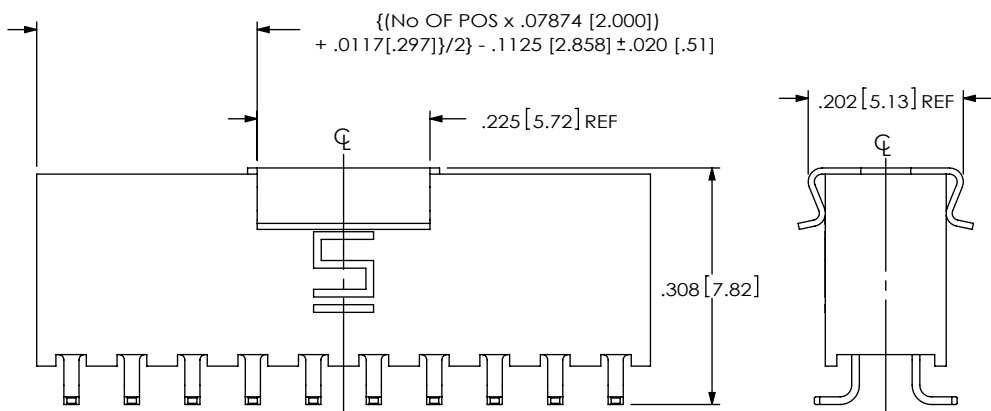
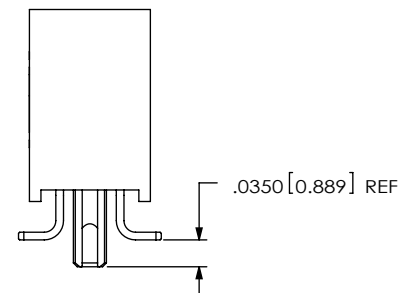


FIG 6
 -P: PICK & PLACE PAD
 (4 POS MIN)
 SQW-110-01-XXX-D-VS-P SHOWN
 (DIFFERENT AS SHOWN, OTHERWISE SAME AS FIG 1)

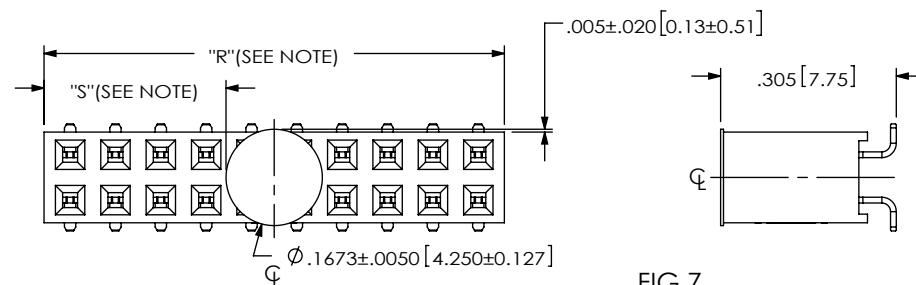


FIG 7
 POLYAMIDE FILM PAD
 (4 POS MIN)
 SQW-110-01-XXX-D-VS-K SHOWN
 (DIFFERENT AS SHOWN, OTHERWISE SAME AS FIG 1)

PROPRIETARY NOTE
 THIS DOCUMENT CONTAINS CONFIDENTIAL AND
 PROPRIETARY INFORMATION AND ALL DESIGN,
 MANUFACTURING, REPRODUCTION, USE, PATENT RIGHTS
 AND SALES RIGHTS ARE EXPRESSLY RESERVED BY SAMTEC,
 INC. THIS DOCUMENT SHALL NOT BE DISCLOSED, IN WHOLE
 OR PART, TO ANY UNAUTHORIZED PERSON OR ENTITY NOR
 REPRODUCED, TRANSFERRED OR INCORPORATED IN ANY
 OTHER PROJECT IN ANY MANNER WITHOUT THE EXPRESS
 WRITTEN CONSENT OF SAMTEC, INC.

DO NOT SCALE DRAWING

SHEET SCALE: 4:1

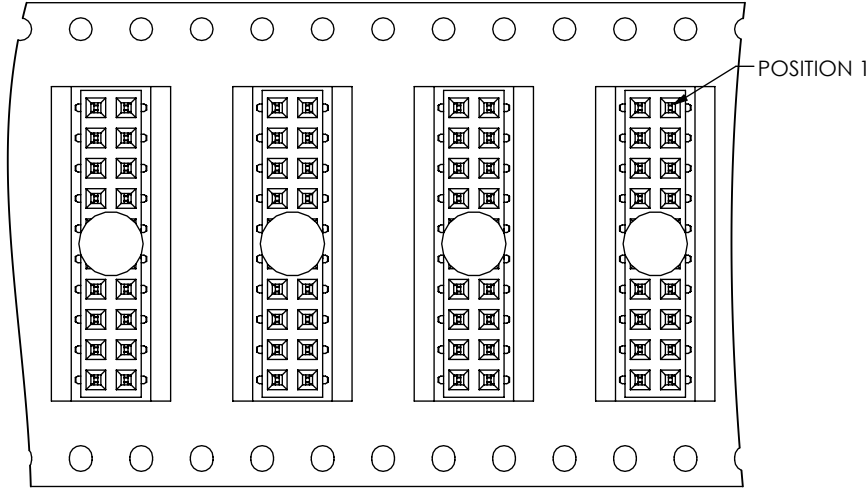


520 PARK EAST BLVD, NEW ALBANY, IN 47150
 PHONE: 812-944-6733 FAX: 812-948-5047
 e-Mail: info@SAMTEC.com code 55322

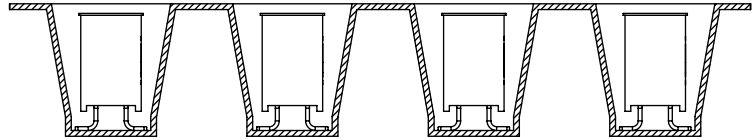
DESCRIPTION:
 2MM SOCKETS TRIP ASSEMBLY

DWG. NO.
SQW-1XX-01-XXX-D-VS-XX-XXX

BY: DEAN P 04/22/1997 SHEET 2 OF 3

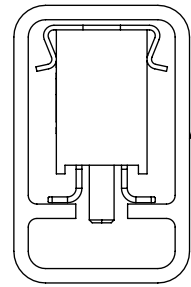


USER DIRECTION OF UNREELING →
POCKET NOT DETAILED



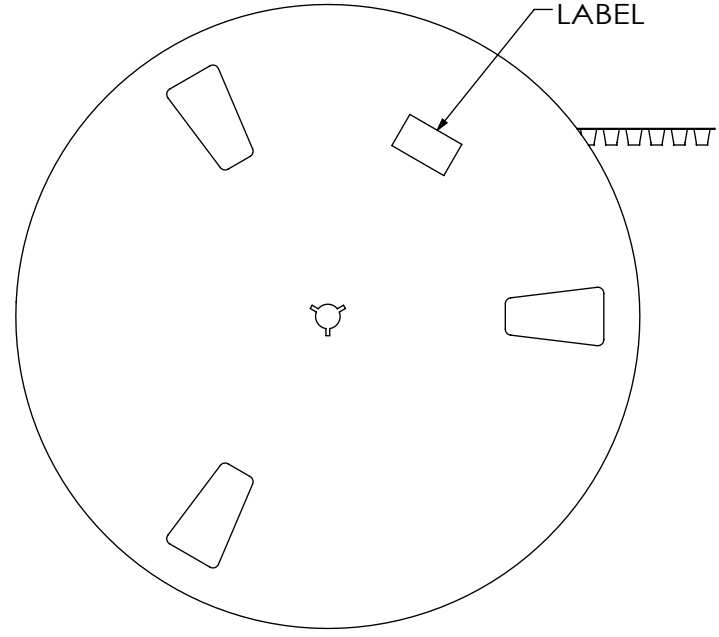
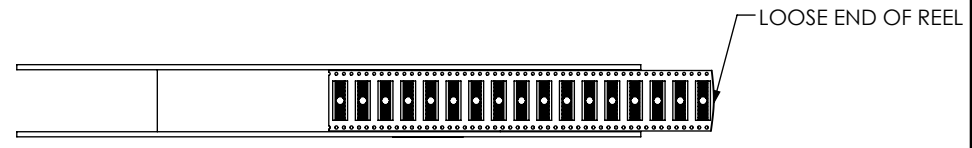
PARTS TO COME OFF REEL AS SHOWN
WITH POCKETS FACING UP

TAPE & REEL VIEW



PT-1-24-03-09
TP-09

TUBE VIEW



UNWINDING DIRECTION →

REEL

PROPRIETARY NOTE
THIS DOCUMENT CONTAINS CONFIDENTIAL AND PROPRIETARY INFORMATION AND ALL DESIGN, MANUFACTURING, REPRODUCTION, USE, PATENT RIGHTS AND SALES RIGHTS ARE EXPRESSLY RESERVED BY SAMTEC, INC. THIS DOCUMENT SHALL NOT BE DISCLOSED, IN WHOLE OR PART, TO ANY UNAUTHORIZED PERSON OR ENTITY NOR REPRODUCED, TRANSFERRED OR INCORPORATED IN ANY OTHER PROJECT IN ANY MANNER WITHOUT THE EXPRESS WRITTEN CONSENT OF SAMTEC, INC.

DO NOT SCALE DRAWING
SHEET SCALE: 4:1



520 PARK EAST BLVD, NEW ALBANY, IN 47150
PHONE: 812-944-6733 FAX: 812-948-5047
e-Mail info@SAMTEC.com code 55322

DESCRIPTION: 2MM SOCKETS TRIP ASSEMBLY

DWG. NO. SQW-1XX-01-XXX-D-VS-XX-XXX

BY: DEAN P 04/22/1997 SHEET 3 OF 3