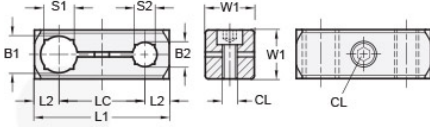




MT8/8-CC2WP-A

Ruland Two-Way Connector Clamp, Thru Holes 8mmx8mm, L 38mm, Aluminum



Description

Ruland MT8/8-CC2WP-A a two-way connector clamp with parallel thru holes for 8mm round tubes, M4 clamp screws, 14mm width/height, and 38mm overall length. It is designed to fit on Ruland tubes and flange bolt bases that begin with MTXX. MT8/8-CC2WP-A is aluminum and screws are 304 stainless steel for use in most industrial applications. This two-way connector clamp is commonly used to support tubes for mounting sensors, screens, reflectors, plexiglass machine guards, and other industrial components. The parallel thru holes make MT8/8-CC2WP-A an ideal connector clamp for compact mounting systems such as those found on small conveyors. MT8-ALK-M4-16 adjustable clamping handles can be used in place of standard hardware allowing for rapid repositioning of tubes or the connector without the need for tools. MT8/8-CC2WP-A is manufactured by Otto Ganter, inventoried by Ruland, and RoHS3 compliant.

Product Specifications

Thru Hole 1 Diameter B1	8 mm	Thru Hole 2 Diameter B2	8 mm
Thru Hole Tolerance	+0.09/-0 mm	Thru Hole 2 Tolerance	+0.09/-0 mm
Overall Length L1	38 mm	Edge To Center L2	7 mm
Center To Center LC	24 mm	Width & Height W1	14 mm
Clamp Screw CL	M4	Weight (lbs)	0.035300
Material Specification	Aluminum	Manufacturer	JW Winco/ Otto Ganter
UPC	634529231692	Country of Origin	Germany
Tariff Code	7609.00.0000		
Note 1	Performance ratings are for guidance only. The user must determine suitability for a particular application.		
Prop 65	⚠️WARNING This product can expose you to the chemical Nickel (metallic), known to the State of California to cause cancer. For more information go to www.P65Warnings.ca.gov .		