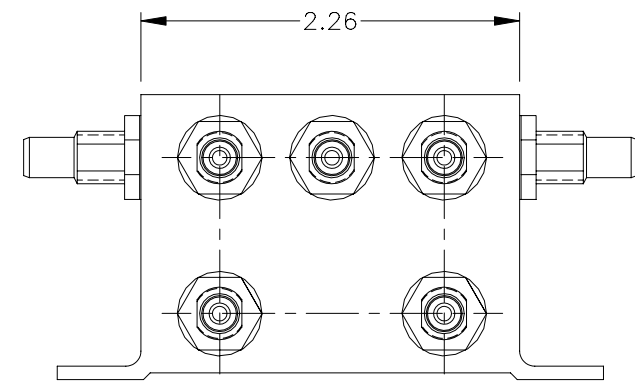
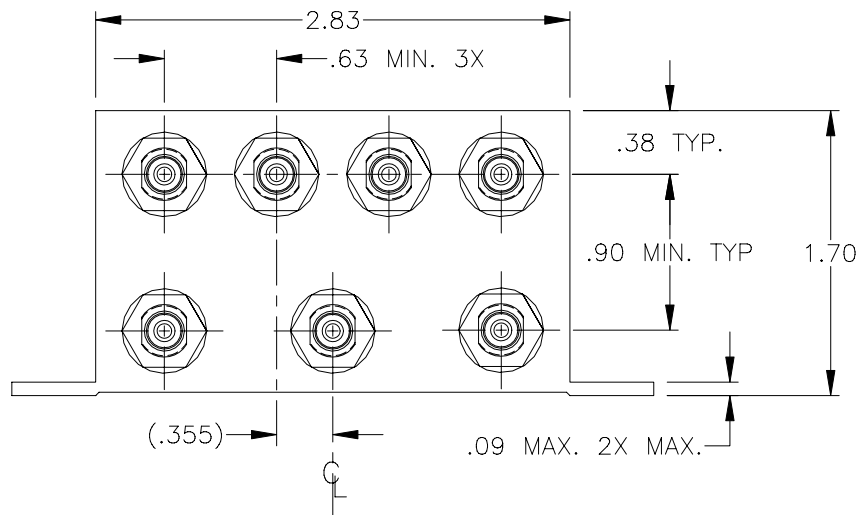
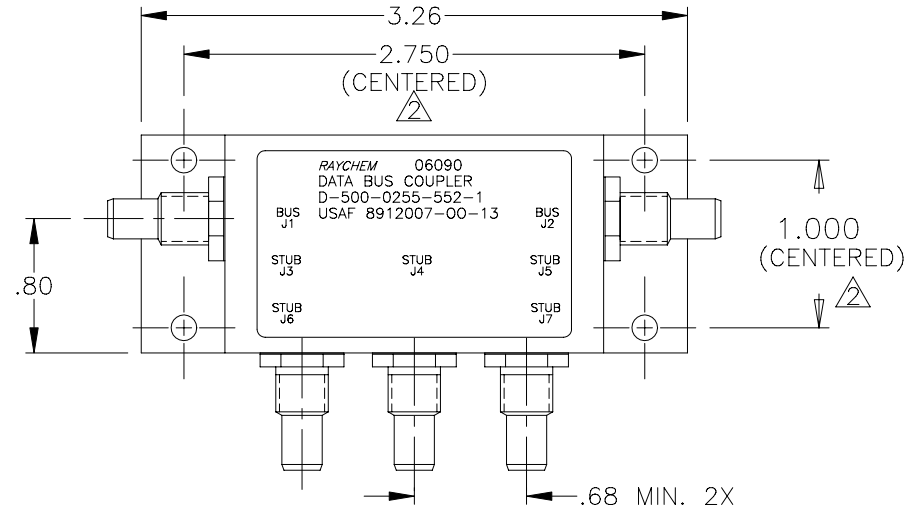
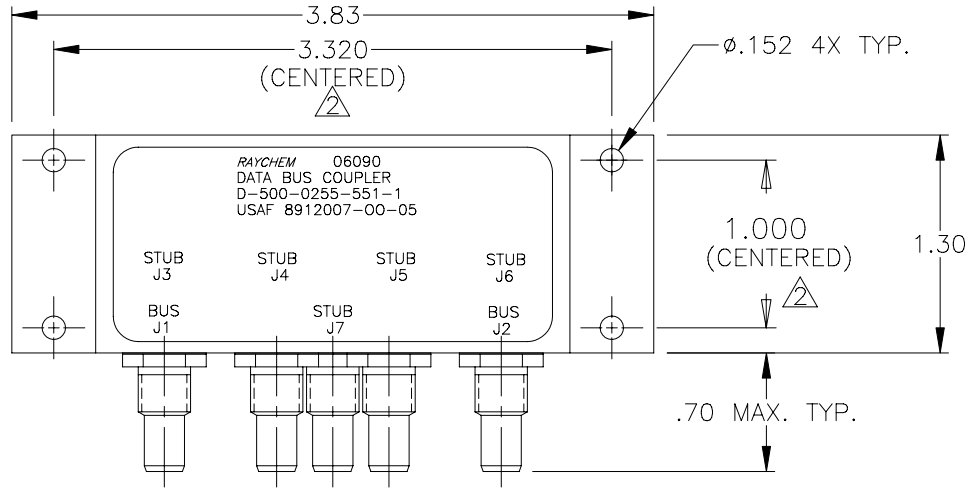


| REVISIONS |                                  |           |          |
|-----------|----------------------------------|-----------|----------|
| LTR       | DESCRIPTION                      | DATE      | APPROVED |
| N/C       | INITIAL RELEASE PER ECN# T-16884 | 92 JAN 15 | Z. TEMAN |
| A         | REVISED PER ECN# T-20121         |           |          |



FACE MOUNT BUS CONFIGURATION  
D-500-0255-551-1

SIDE MOUNT BUS CONFIGURATION  
D-500-0255-552-1

- 3 WEIGHT: D-500-0255-551-1 195 grams MAX.  
D-500-0255-552-1 170 grams MAX.
- 2 HOLE PATTERN MACHINED SYMMETRIC TO MOUNTING FLANGE.
1. ORIENTATION OF CONNECTORS IS APPROXIMATELY AS SHOWN.

NOTES:

If this document is printed it becomes uncontrolled.  
Check for the latest revision.

SPECIFICATION CONTROL DRAWING

|   |          |             |                        |              |  |   |                 |           |              |                      |     |   |
|---|----------|-------------|------------------------|--------------|--|---|-----------------|-----------|--------------|----------------------|-----|---|
| UNLESS OTHERWISE SPECIFIED DIMENSIONS ARE IN INCHES. METRIC DIMENSIONS ARE IN BRACKETS. | DRAWN    | J.B.K.      | 91 NOV 4               |              | Tyco Electronics Corporation<br>300 Constitution Drive<br>Menlo Park, CA. 94025 U.S.A. |   |                 |           |              |                      |     |   |
|   | CHECKED  |             |                        |              |  |   |                 |           |              |                      |     |   |
|   | DECIMALS | .XXX ± .010 | [ — mm ]               | TITLE        | 5 STUB DATA BUS BOX COUPLER WITH THREADED TRIAXIAL CONNECTORS                          |   |                 |           |              |                      |     |   |
|   | ANGLES   | .XX ± .03   | [ — mm ]               | APPROVED     |  |   | Z.TEMAN         | 92 JAN 15 |              |                      |     |   |
| WEIGHT  | .X ± —   |             | CAD NAME               | 009154-1.DWG |  |   |                 |           |              |                      |     |   |
|   |          |             | THIRD ANGLE PROJECTION |              | SIZE   | A | CODE IDENT. NO. | 06090     | DWG. NO.     | D-500-0255-551/552-1 | REV | A |
|   |          |             |                        |              | DO NOT SCALE THIS DRAWING  |   |                 |           | SHEET 1 OF 2 |                      |     |   |

1.0 INTERMATEABILITY

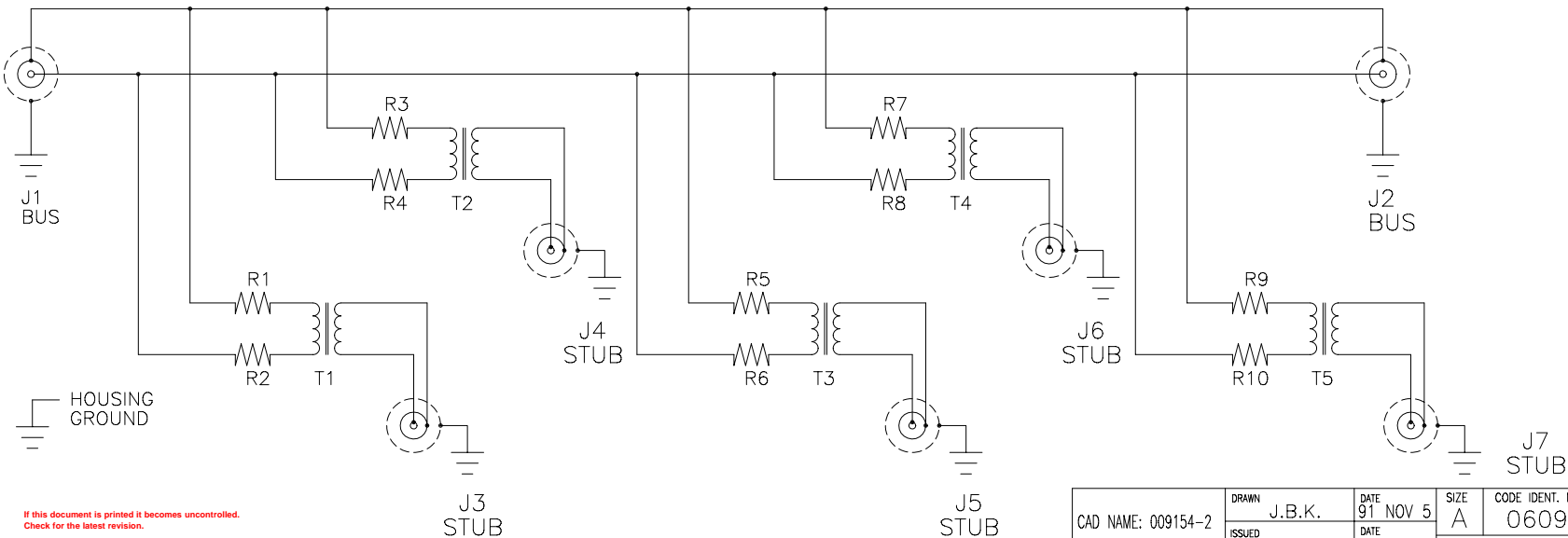
|                                  |                                  |
|----------------------------------|----------------------------------|
| BUS JACKS<br>J1 AND J2           | MATING PLUG                      |
| DK-621-0412-P<br>(8340711-00-01) | DK-621-0411-S<br>(8340709-00-02) |

|                                  |                                  |
|----------------------------------|----------------------------------|
| STUB JACK<br>J3 THRU J7          | MATING PLUG                      |
| DK-621-0412-S<br>(8340711-00-02) | DK-621-0411-P<br>(8340709-00-01) |

2.0 PERFORMANCE

- 2.1 THIS COUPLER IS DESIGNED TO MEET THE APPLICABLE FUNCTIONAL REQUIREMENT OF RAYCHEM SPECIFICATION D-6021 AND USAF 8912007.
- 2.2 THE COUPLER SHALL OPERATE UNDER ANY OF THE ENVIRONMENTAL SERVICE CONDITIONS AS SPECIFIED IN MIL-E-5400, CLASS V UPGRADED TO 125°C CONTINUOUS OPERATION.
- 2.3 ALTITUDE: SEA LEVEL TO 75,000 FEET

SCHEMATIC DIAGRAM



If this document is printed it becomes uncontrolled.  
Check for the latest revision.

|                    |                 |                  |                           |                          |                                  |
|--------------------|-----------------|------------------|---------------------------|--------------------------|----------------------------------|
| CAD NAME: 009154-2 | DRAWN<br>J.B.K. | DATE<br>91 NOV 5 | SIZE<br>A                 | CODE IDENT. NO.<br>06090 | DWG. NO.<br>D-500-0255-551/552-1 |
|                    | ISSUED          | DATE             | DO NOT SCALE THIS DRAWING |                          | SHEET 2 OF 2                     |