

PART WITH CAP (FOR ILLUSTRATION ONLY)

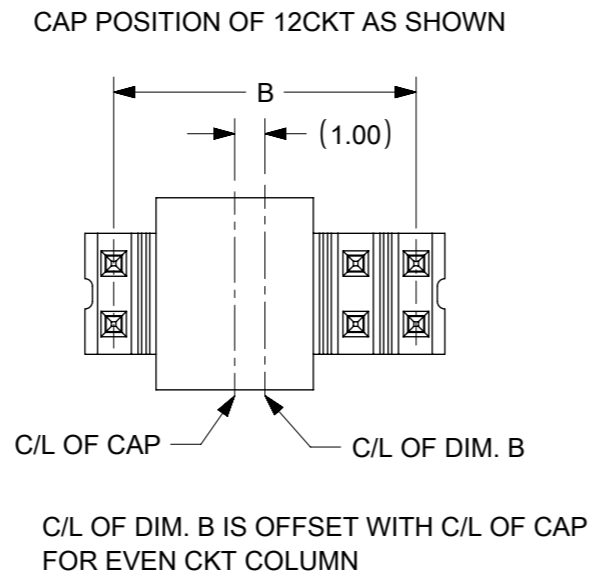
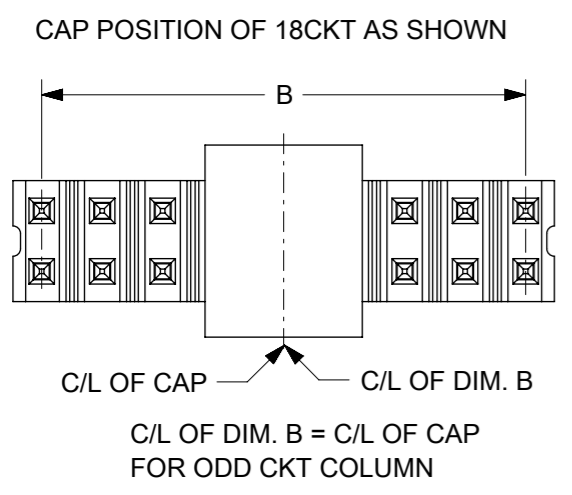
- NOTES:
- MATERIAL:
HSG: NYLON, GLASS-FILLED, UL94V-0 COLOR: BLACK
PIN: 0.50MM SQ, COPPER ALLOY
 - PLATING FINISH:
 - 0.05-0.25µm GOLD OVER
1.25µm MIN. NICKEL OVERALL.
 - 0.05-0.25µm SELECTIVE GOLD ON CONTACT AND
2.50µm MIN. SELECTIVE TIN ON SOLDER TAIL OVER
1.25µm MIN. NICKEL OVERALL.
 - 0.38µm MIN. SELECTIVE GOLD PLATE ON CONTACT AND
2.00µm MIN. SELECTIVE TIN ON SOLDER TAIL OVER
1.25µm MIN. NICKEL OVERALL.
 - 0.75µm MIN. SELECTIVE GOLD PLATE ON CONTACT AND
2.00µm MIN. SELECTIVE TIN ON SOLDER TAIL OVER
1.25µm MIN. NICKEL OVERALL.
 - 2.50µm MIN. TIN OVERALL
1.25µm MIN. NICKEL OVERALL
 - 0.75µm MIN. SELECTIVE GOLD PLATE ON BOTH CONTACT
AND SOLDER TAIL OVER 1.25µm MIN. NICKEL OVERALL.
 - PIN PUSHOUT FORCE: 0.85Kg MIN IN EITHER DIRECTION.
 - THE ABOVE CIRCUITS SHOWN IS FOR ILLUSTRATION ONLY.
 - FOR PACKING OPTION PLEASE REFER TO THE TABLE.
 - IRREGULAR CIRCUIT CUTOFF WITHIN BREAKAWAY SECTION IS PERMISSIBLE. CUTTING OR CHIPPING OF THE MAIN BODY IS NOT ACCEPTABLE
 - PRODUCT SPEC PS-87761-001 APPLIES.
 - RECOMMENDED PCB THICKNESS 1.60MM.
 - WAFER TO BE FLAT WITHIN 0.003 mm/mm
 - PACKAGING SPECIFICATION: TRAY: PK-89990-487
BULK: PK-89990-490
TUBE: PK-151017-0001
TAPE & REEL : PK-87858-300

SYMBOLS ▽ = 0 ▽ = 0 ▽ = 0 ▽ = 0 ▽ = 0 ▽ = 0 ▽ = 0 ▽ = 0 ▽ = 0 ▽ = 0 ▽ = 0	THIS DRAWING CONTAINS INFORMATION THAT IS PROPRIETARY TO MOLEX ELECTRONIC TECHNOLOGIES, LLC AND SHOULD NOT BE USED WITHOUT WRITTEN PERMISSION	SCALE mm NTS	CURRENT REV DESC:			molex CUSTOM HEADER 2.00MM PTICH DUAL ROW DUAL WAFER THROUGH HOLE
	GENERAL TOLERANCES (UNLESS SPECIFIED)	EC NO: 700379	DRWN: DANUSA 2022/03/22		DOCUMENT NUMBER	
	4 PLACES ±	MM INCH	DRWN: DANUSA 2022/03/22	CHK'D: DANUSA 2022/03/22	DOC TYPE	
	3 PLACES ±	MM INCH	APPR: MRAMAKRISHNA 2022/03/25	INITIAL REVISION:	DOC PART	
	2 PLACES ± 0.2 ±	MM INCH	DRWN: DRWN BY XXXX/XX/XX	APPR: APPR BY XXXX/XX/XX	REVISION	
1 PLACE ±	MM INCH	DRAFT WHERE APPLICABLE MUST REMAIN WITHIN DIMENSIONS			SD-151017-0001	
ANGULAR TOL ± 3.0°	THIRD ANGLE PROJECTION	DRAWING	SERIES	MATERIAL NUMBER	CUSTOMER	
▣ = 0	THIRD ANGLE PROJECTION	A3-SIZE	151017	GENERAL MARKET	SHEET NUMBER	
▽ = 0					1 OF 2	

CKT SIZE	DIMENSION	
	A	B
04	4.00	2.00
06	6.00	4.00
08	8.00	6.00
10	10.00	8.00
12	12.00	10.00
14	14.00	12.00
16	16.00	14.00
18	18.00	16.00
20	20.00	18.00
22	22.00	20.00
24	24.00	22.00
26	26.00	24.00
28	28.00	26.00
30	30.00	28.00
32	32.00	30.00
34	34.00	32.00
36	36.00	34.00
38	38.00	36.00
40	40.00	38.00
42	42.00	40.00
44	44.00	42.00
46	46.00	44.00
48	48.00	46.00
50	50.00	48.00

PART NUMBERS	CKT SIZE	VOID POSITION	KINK POSITION	CAP OPTION	DIMENSION					(G)	PLATING PLATING OPTION	PACKAGING TYPE
					MODIFIED MATING END	MATING END	STACKER HEIGHT	SOLDER TAIL	(F)			
					M1	M	(H)	P				
151017-0401	04	----	----	----	----	8.50	16.50	3.00	28.00	-	3	TRAY
151017-0616	06	----	----	----	----	11.90	20.00	2.60	34.50	-	1	TRAY
151017-0617	06	----	----	----	----	5.46	8.18	5.46	19.10	20.45	3	TAPE & REEL
151017-0801	08	----	1,8	----	----	15.05	9.65	3.30	28.00	-	5	TRAY
151017-0803	08	----	----	----	----	15.05	5.00	3.70	23.75	-	5	TRAY
151017-1005	10	----	----	----	----	8.00	20.00	3.00	31.00	-	3	TRAY
151017-1001	10	----	----	----	----	4.00	15.00	4.00	23.00	-	3	TRAY
151017-1002	10	----	----	YES	----	4.00	8.10	3.00	15.10	16.45	5	TAPE & REEL
151017-1003	10	----	----	NO	----	2.60	15.00	2.60	20.20	-	5	TUBE
151017-1004	10	----	----	----	----	4.00	8.10	3.00	15.10	16.45	5	TRAY
151017-1200	12	----	----	YES	----	4.00	8.10	3.00	15.10	16.45	5	TAPE & REEL
151017-1201	12	----	----	----	----	4.00	8.10	3.00	15.10	16.45	5	TRAY
151017-1401	14	----	----	----	----	6.36	15.49	6.34	28.19	-	6	TRAY
151017-1601	16	----	----	YES	4.50 CKT#1& 2	3.50 CKT#3-16	8.00	3.00	15.50	16.35	3	TAPE & REEL
151017-1602	16	----	----	----	----	4.00	15.00	4.00	23.00	-	3	TRAY
151017-2600	26	----	----	----	----	3.00	12.00	3.00	18.00	-	5	TRAY

CAP POSITION ILLUSTRATION FOR REFERENCE



SYMBOLS	THIS DRAWING CONTAINS INFORMATION THAT IS PROPRIETARY TO MOLEX ELECTRONIC TECHNOLOGIES, LLC AND SHOULD NOT BE USED WITHOUT WRITTEN PERMISSION		CURRENT REV DESC:		molex
	DIMENSION UNITS	SCALE			
▽ = 0	mm	NTS			2.00MM PTICH DUAL ROW DUAL WAFER THROUGH HOLE
▽ = 0	GENERAL TOLERANCES (UNLESS SPECIFIED)				PRODUCT CUSTOMER DRAWING
▽ = 0					
▽ = 0	4 PLACES ±	±	EC NO: 700379		DOCUMENT NUMBER
▽ = 0	3 PLACES ±	±	DRWN: DANUSA	2022/03/22	
▽ = 0	2 PLACES ±	0.2 ±	CHK'D: DANUSA	2022/03/22	DOC TYPE
▽ = 0	1 PLACE ±	±	APPR: MRAMAKRISHNA	2022/03/25	DOC PART
▽ = 0	0 PLACES ±	±	INITIAL REVISION:		REVISION
▽ = 0	ANGULAR TOL ± 3.0°		DRWN: DRWN BY	XXXX/XX/XX	GENERAL MARKET
▽ = 0			APPR: APPR BY	XXXX/XX/XX	
▽ = 0	DRAFT WHERE APPLICABLE MUST REMAIN WITHIN DIMENSIONS	THIRD ANGLE PROJECTION	DRAWING	SERIES	SHEET NUMBER
▽ = 0			A3-SIZE	151017	2 OF 2