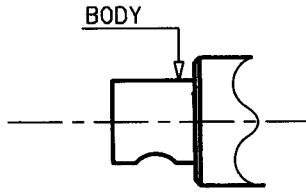


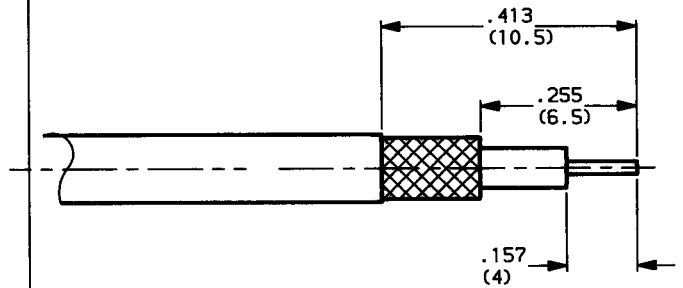


Panel cable receptacle, solder-type  
- cable 2/50

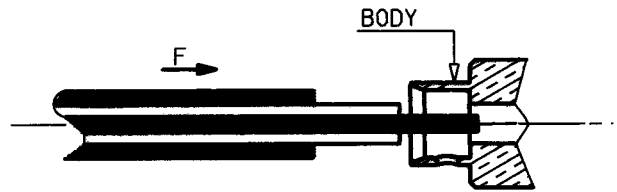
R. I. K. J. M. H. 2



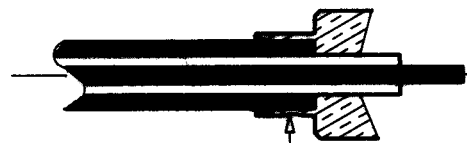
1-1 Cable stripping



2-1 To introduce cable into the connector body until contact with it according to F direction



3-1 To solder the braid on the body through F hole



Soldering through F hole

ISSUE	REVISION No	DESCRIPTION	BY	DATE
.	.	.	.	.
.	.	.	.	.
.	.	.	.	.

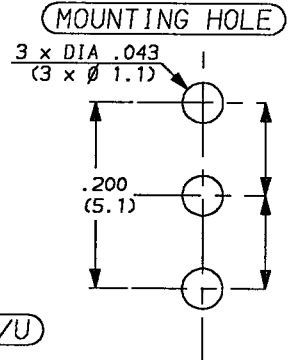
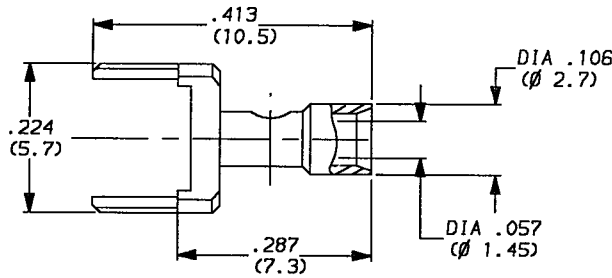
Initiated on 29 08 88  
Superseded on \_\_\_\_\_

The information given here is subject to change without notice. Design changes may be in order to improve the product.



FEEDTHROUGH FOR P.C.B SOLDER TYPE  
CABLE 2/50

R-INC 84434



(---) DIMENSIONS IN MM

WEIGHT 0 oz (..... g)

Cable : RG 178/U , RG 196/U

CHARACTERISTICS

NOMINAL IMPEDANCE	50 $\Omega$	STANDARDISATION	-
FREQUENCY RANGE	0-3 GHz		-
TEMPERATURE RATING	-55 $\alpha$ +155 $^{\circ}$ C		-
VSWR	NA Max		-
RF INSERTION LOSS	NA dB Max	CABLE RETENTION	7.2 Lb Max 32 N Max
VOLTAGE RATING	750 Vrms	CENTER CONTACT RETENTION	
DIELECTRIC WITHSTANDING VOLTAGE	2000 Vrms	Axial force - mating end	0 Lb Max NA N Max
INSULATION RESISTANCE	NA M $\Omega$	Axial force - opposite end	0 Lb Max NA N Max
HERMETIC SEAL	NA cc/s cm <sup>3</sup> /s	Torque (Max)	0 inch.oz NA cm.N
LEAKAGE (pressurized only)	0 psi NA kg/cm <sup>2</sup>	MATING TORQUE RECOMMENDED	0 inch.Lb NA cm.N
-	-	-	-
-	-	-	-

CONSTRUCTION

CONNECTOR PARTS	MATERIALS	FINISH
Body	Brass	Gold over nickel
Outer contact	-	-
Center contact	-	-
Insulators	-	-
-	-	-
-	-	-
-	-	-
-	-	-
-	-	-

ISSUE	REVISION No	DESCRIPTION	BY	DATE

Initiated on 03 11 88

The information given here is subject to change without notice. Design changes may be in order to improve the product.



Superseded on -----