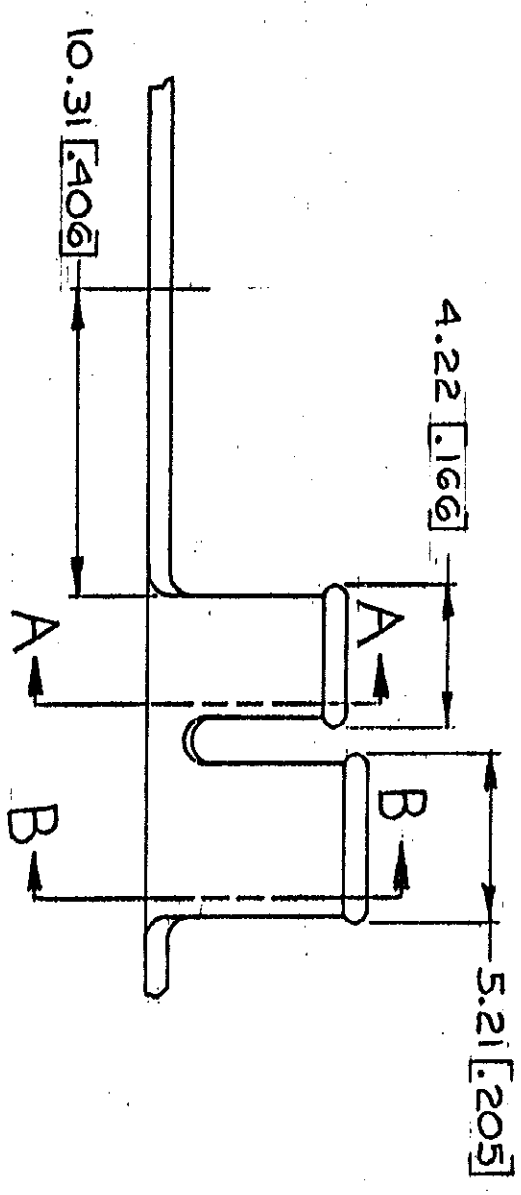
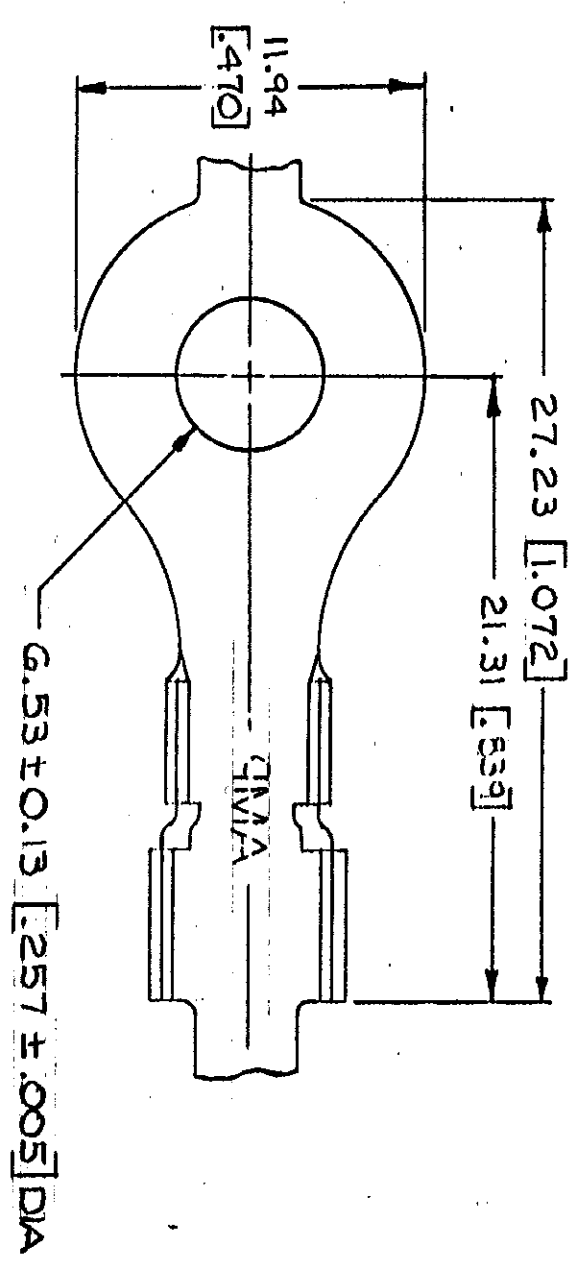


AWING MADE IN THIRD ANGLE PROJECTION

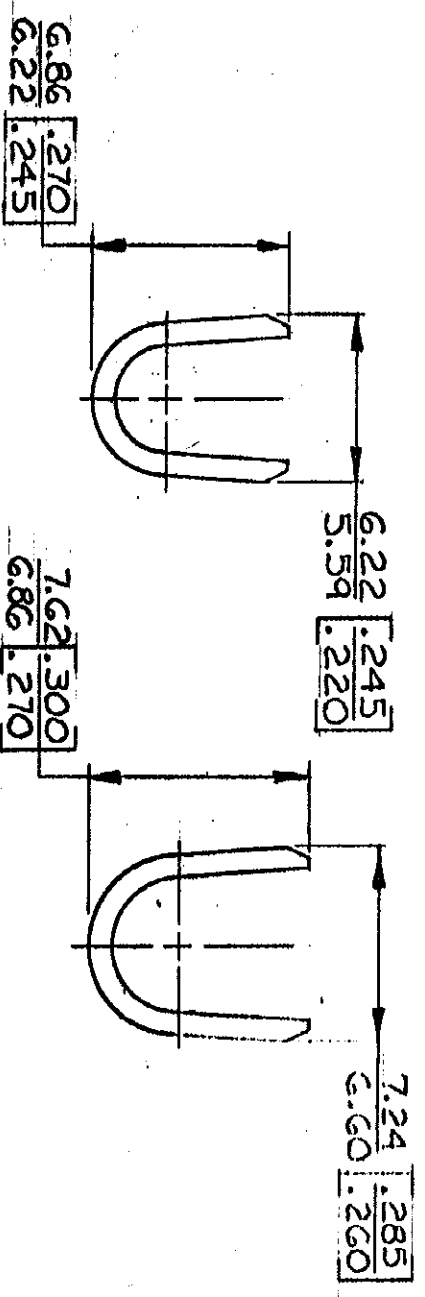
© COPYRIGHT 1963 BY AMP INCORPORATED, HARRISBURG, PA.  
 ALL INTERNATIONAL RIGHTS RESERVED. AMP INCORPORATED PRODUCTS  
 COVERED BY U. S. AND FOREIGN PATENTS AND/OR PATENTS PENDING.



- 1. CONTINUOUS STRIPON REELS
- 2. DIMENSIONS IN BRACKETS ARE IN INCHES.

**METRIC**

		REVISIONS		1	Loc	AF	DIST
P/F	ZONE	LTR	DESCRIPTION	DATE	APPROVED		
✓	A		REDRAWN & REVISED	5-1-78	D. SHI		50
✓	B		REV PER AF-7197	10/24/78	PAW	51	



SECT A-A

SECT B-B

UNLESS OTHERWISE SPECIFIED DIMENSIONS ARE IN INCHES. TOLERANCES ON: DECIMALS ±0.38 [0.15] ANGLES 1°		CONTRACT NO.		NAME	
STUD SIZE	3.0-6.0 mm [12-10]	INSULATION RANGE	3.81-5.33 [150-.210]	FINISH	TIN
WIRE RANGE				MATERIAL	0.76 BRASS [0.30]
MATERIAL		DR		AMP INCORPORATED	
SEE TABLE		CHK		HARRISBURG, PA.	
FINISH		APPR		RING	
SEE TABLE		DSGN APPD		SIZE	
		OTHER APPD		CODE IDENT NO	
				DRAWING NO	
				41125	
				SCALE	
				B	
				SHEET	

CUSTOMER DRAWING

AMP 1270-15 (7-73)