

"Stay Connected" with

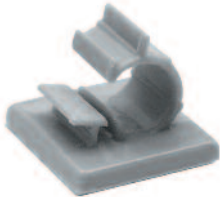
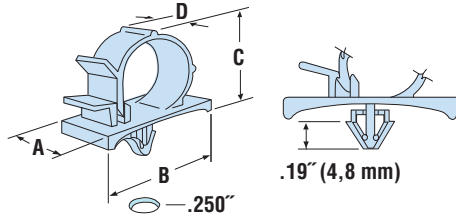


HEYware Products

a PennEngineering® Company



- Push mount design allows for fast installation.
- Releasable and reusable wire clip.
- Bayonet design allows from .02" (0,5 mm) panel thickness to .15" (3,8 mm).
- Bayonet snap locks into a .250" (6,3 mm) hole and will hold a 25 pound continuous load or a 50 pound impact load.
- Multiple sizes available for bundles from .19" (4,7 mm) to 1.00" (25,4 mm).



- Releasable and reusable clips for easy wire bundle routing.
- Quick and easy installation - simply peel off backing and press into place.
- Seven sizes for bundles from .187" (4,7mm) to 1.500" (38,1mm) in diameter
- Clips without suffix have a load rating of 1 pound per square inch
- Clips with suffix "A" have a load rating of 6 pounds per square inch
- Clips with suffix "V" have a load rating of 105 pounds per square inch

HEYClip™ Locking Releasable Wire Clips

Arrowhead Mount

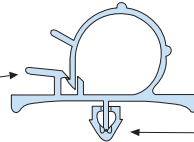
MAXIMUM BUNDLE DIAMETER	PART NO.		DESCRIPTION	FOOTPRINT		OVERALL HEIGHT		CLAMP WIDTH		MOUNTING HOLE DIA.	
	Gray	Black		A x B		C		D			
in. mm.				in. mm.		in. mm.		in. mm.		in. mm.	

PMWC Series For Panels .02" (0,5 mm) to .08" (2,0 mm) thick												
.19	4,7	3845	3870	PMWC 187-20	.54 x 1.01	13,7 x 25,7	.39	9,9	.38	9,7	.250	6,4
.25	6,4	3846	3871	PMWC 250-20	.58 x 1.01	14,7 x 25,7	.45	11,4	.41	10,4		
.38	9,5	3847	3872	PMWC 375-20	.65 x 1.01	16,5 x 25,7	.53	13,5	.50	12,7		
.50	12,7	3848	3906	PMWC 500-20	.75 x 1.20	19,1 x 30,5	.73	18,5	.59	15,0		
.75	19,1	3849	3908	PMWC 750-20	.88 x 1.38	22,4 x 35,1	.99	25,1	.67	17,0		
1.00	25,4	3853	3909	PMWC 1000-20	1.37 x 1.88	34,8 x 47,8	1.35	34,3	.99	25,1		

For Panels .09" (2,3 mm) to .15" (3,8 mm) thick												
.19	4,7	3880	3910	PMWC 187-90	.54 x 1.01	13,7 x 25,7	.39	9,9	.38	9,7	.250	6,4
.25	6,4	3881	3912	PMWC 250-90	.58 x 1.01	14,7 x 25,7	.45	11,4	.41	10,4		
.38	9,5	3882	3913	PMWC 375-90	.65 x 1.01	16,5 x 25,7	.55	14,0	.50	12,7		
.50	12,7	3883	3914	PMWC 500-90	.75 x 1.20	19,1 x 30,5	.73	18,5	.59	15,0		
.75	19,1	3884	3915	PMWC 750-90	.88 x 1.38	22,4 x 35,1	.99	25,1	.67	17,0		
1.00	25,4	3885	3916	PMWC 1000-90	1.37 x 1.88	34,8 x 47,8	1.35	34,3	.99	25,1		

Standard color gray or black.

Quick lock/release tab allows fast lock-up and easy access to wire bundle.



Unique design of barbed push mount permits fast installation, ensures reliable retention, and provides high pull-out resistance.

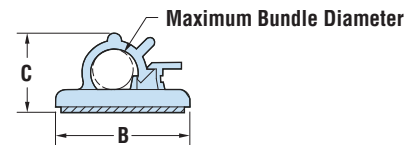
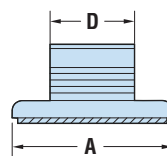
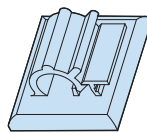
HEYClip™ Locking Releasable Wire Clips

Adhesive-Back Mount

MAXIMUM BUNDLE DIAMETER	PART NO.						DESCRIPTION	FOOTPRINT		OVERALL HEIGHT		CLAMP WIDTH		
	Rubber		Acrylic		VHB			A x B		C		D		
in. mm.	Black	Gray	Black	Gray	Black	Gray	in.	mm.	in.	mm.	in.	mm.		
.19	4,8	3917	3857	3917A	3857A	3917V*	3857V*	WCA 187-500	.74 x .62	18,8 x 15,7	.34	8,6	.39	9,9
.25	6,4	3918	3858	3918A	3858A	3918V*	3858V*	WCA 250-750	1.00 x .87	25,4 x 22,1	.42	10,7	.63	16,0
.38	9,6	3919	3859	3919A	3859A	3919V*	3859V*	WCA 375-1000	1.00 x 1.00	25,4 x 25,4	.50	12,7		
.50	12,7	3920	3860	3920A	3860A	3920V*	3860V*	WCA 500-1250	1.00 x 1.21	25,4 x 30,7	.68	17,3	.64	16,3
.75	19,1	3921	3861	3921A	3861A	3921V*	3861V*	WCA 750-1750	1.15 x 1.45	29,2 x 36,8	.99	25,1		
1.00	25,4	3923	3867	3923A	3867A	3923V*	3867V*	WCA 1000-4000	1.98 x 2.24	50,3 x 56,9	1.37	34,8	1.26	32,0
1.50	38,1	3930	3868	3930A	3868A	3930V*	3868V*	WCA 1500-6000	2.42 x 2.95	61,5 x 74,9	1.77	45,0	1.31	33,3

Standard color gray or black.

*Tensile strength for VHB series is greater than wire retention of the clip.



	PMWC	WCA	Adhesive Temperature Ranges***
Material	Nylon 6/6	HS Nylon 6/6 (Black), Nylon 6/6 (Gray)	Rubber Adhesive 50°F (10°C) to 155°F (68°C)
Flammability Rating	94V-2	94V-2	Acrylic Adhesive 10°F (-12°C) to 180°F (82°C)
Temperature Range	32°F (0°C) to 185°F (85°C) - Gray 32°F (0°C) to 221°F (105°C) - Black	-4°F (-20°C) to 239°F (115°C) - Black 40°F (-40°C) to 185°F (85°C) - Gray	VHB Adhesive -40°F (-40°C) to 194°F (90°C)
			***Low temperature reflects minimum application temperature for adhesives