

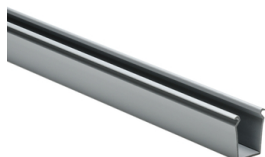
Specification Sheet

Part Number: 181-11501

Solid wall construction provides excellent coverage to keep wires clean. Durable material protects wires from damage, with long-lasting performance.

Available standard colors complement or contrast in light and dark environments.

Optional covers snap on and off easily, and are provided with a non-slip lining that insures the covers remain in place during vibration.



Solid Wall Wiring Duct, 1" x 1.5", Non-Adhesive, PVC, Gray, 120ft/Carton

Article Number 181-11501

Type SD1X1.5

Color Gray (GY)

Quantity Per carton

Product Description HellermannTyton Solid Wall Wiring Duct efficiently routes and protects wire. Solid wall wiring duct is designed for straight wire runs where breakouts are not required. Solid wall wiring duct is manufactured from high-impact, rigid PVC; comes in standard colors of white, gray and black; and is available in 6-foot lengths.

Short Description Solid Wall Wiring Duct, 1" x 1.5", Non-Adhesive, PVC, Gray, 120ft/Carton

Global Part Name SD1X1.5-PVC-GY

Length L (Imperial) 6.0

Length L (Metric) 1.83

Fixation Method Non-Adhesive

Width W (Imperial) 1.0

Width W (Metric) 25.4

Height H (Imperial) 1.57

Height H (Metric) 39.9

Mounting Hole Centers (Imperial) 4.0

Material Polyvinylchloride (PVC)

Material Shortcut PVC

Flammability Self-extinguishing

Halogen Free No

Operating Temperature +122°F (+50°C)

| | |
|------------------------------|--|
| Reach Compliant (Article 33) | No |
| ROHS Compliant | Yes |
| Certification/Specification | UL EN 50085-2-3_1A CSA EN 50085-1:2005 + A1:2013 |
| UL Recognized (US) | Yes |
| Package Quantity (Imperial) | 120.0 |
| Package Quantity (Metric) | 36.58 |
| Customs Number | 3925900000 |

© 2023 HellermannTyton. All Rights Reserved.

[Contact Us](#) [RoHS/WEEE Compliance](#) [Disclaimer](#) [Terms and Conditions](#)