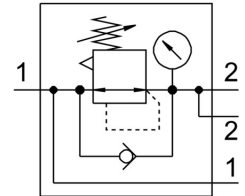


# Pressure regulator MS6-LRB-1/2-D6-AS

Part number: 530328

FESTO



## Data sheet

| Feature                                  | Value   |
|--|---|
| Size                                     | 6   |
| Series                                   | MS  |
| Actuator lock                            | Rotary knob with detent<br>can be closed with accessories                                   |
| Mounting position                        | Any   |
| Structural design                        | Directly controlled diaphragm regulator<br>with continuous compressed air supply            |
| Controller function                      | Outlet pressure constant<br>With primary pressure compensation<br>With secondary exhausting |
| Symbol                                   | 00995309  |
| Pressure gauge                           | with pressure gauge   |
| Operating pressure                       | 0.8 bar ... 20 bar  |
| Pressure regulation range                | 0.3 bar ... 7 bar   |
| Max. pressure hysteresis                 | 0.25 bar  |
| Standard nominal flow rate               | 6300 l/min  |
| Operating medium                         | Compressed air as per ISO 8573-1:2010 [7:4:4]<br>Inert gas                                  |
| Information on operating and pilot media | Operation with oil lubrication possible (required for further use)                          |
| Corrosion resistance class (CRC)         | 2 - Moderate corrosion stress   |
| LABS (PWIS) conformity                   | VDMA24364-B1/B2-L   |
| Storage temperature                      | -10 °C ... 60 °C  |
| For use in the food industry             | See supplementary material information  |
| Temperature of medium                    | -10 °C ... 60 °C  |
| Ambient temperature                      | -10 °C ... 60 °C  |
| Product weight                           | 747 g   |
| Type of mounting                         | Optionally:<br>Front panel mounting<br>Line installation<br>With accessories                |
| Pneumatic connection 1                   | G1/2  |
| Pneumatic connection 2                   | G1/2  |
| Note on materials                        | RoHS-compliant  |
| Material of operator panel               | PA<br>POM   |
| Seals material                           | NBR   |
| Housing material                         | Die-cast aluminum   |

| Feature            | Value |
|--------------------|-------|
| Diaphragm material | NBR   |