

4

15

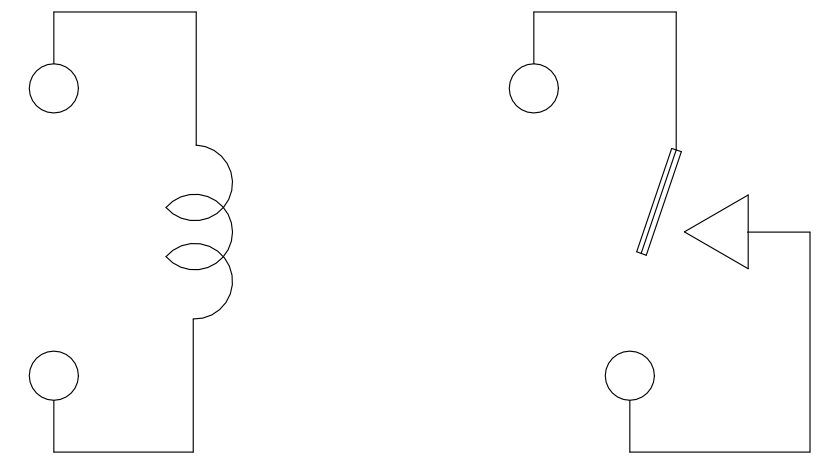
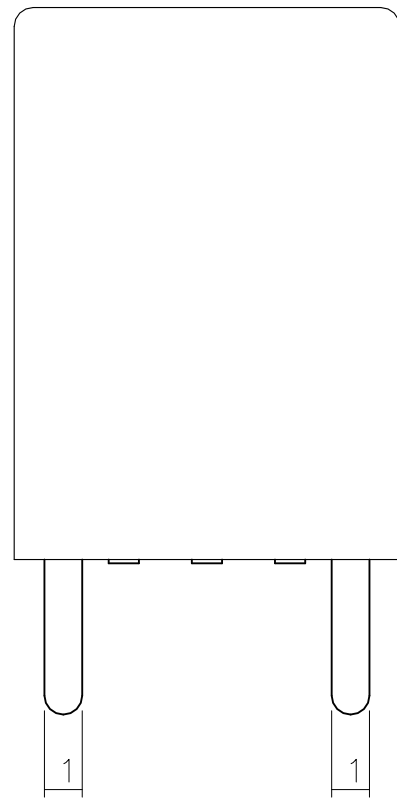
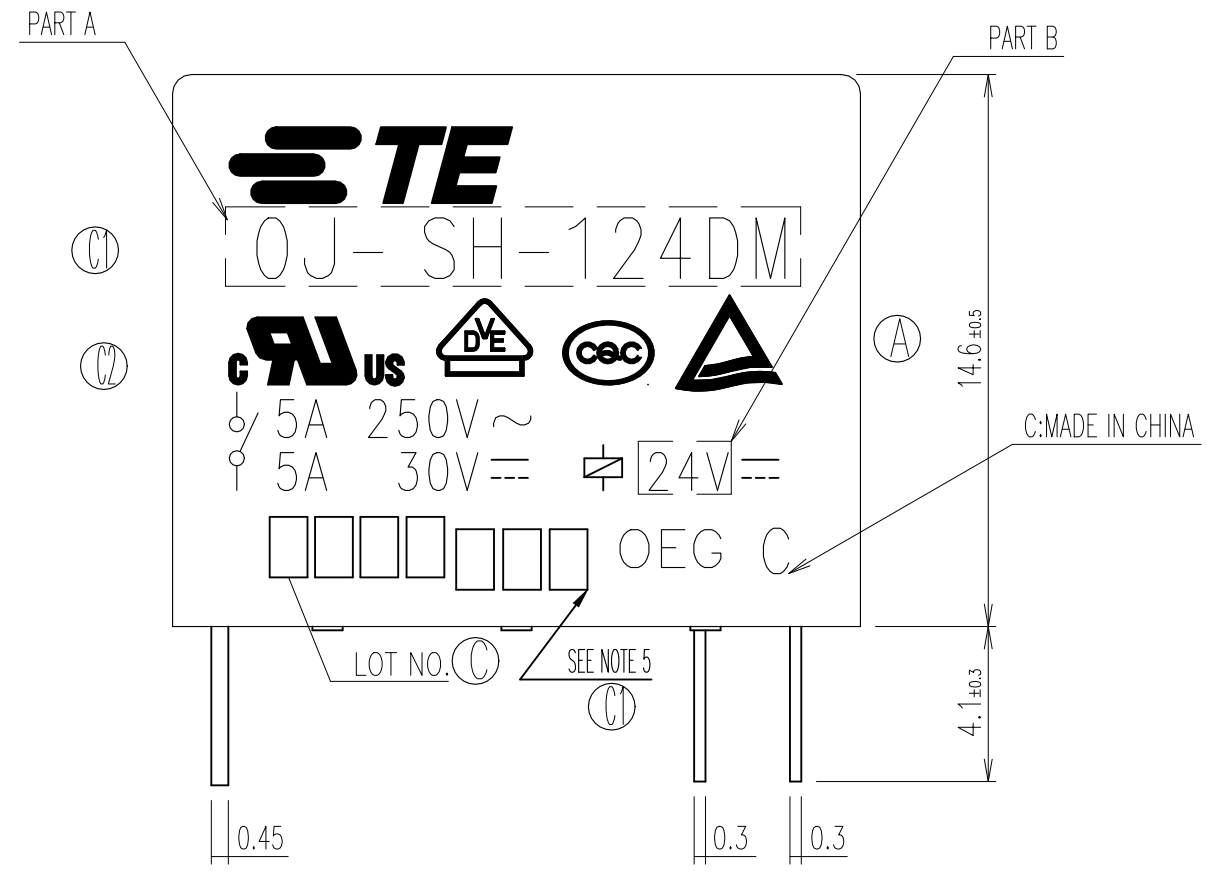
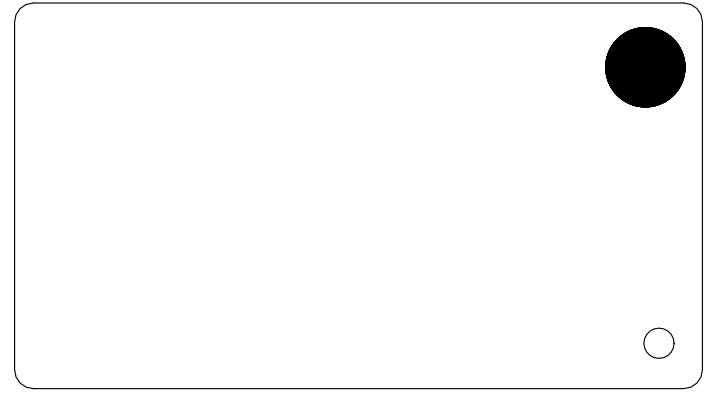
3

2

1

THIS DRAWING IS UNPUBLISHED. RELEASED FOR PUBLICATION
 © COPYRIGHT - By - TE CONNECTIVITY ALL RIGHTS RESERVED.

LOC	DIST	REVISIONS				
P	LTR	DESCRIPTION	DATE	DWN	APVD	
HB	-	C2	REMOVED CSA LOGO ECN-22-139757	22FEB2022	G.R	K.T



CONNECTION FIGURE

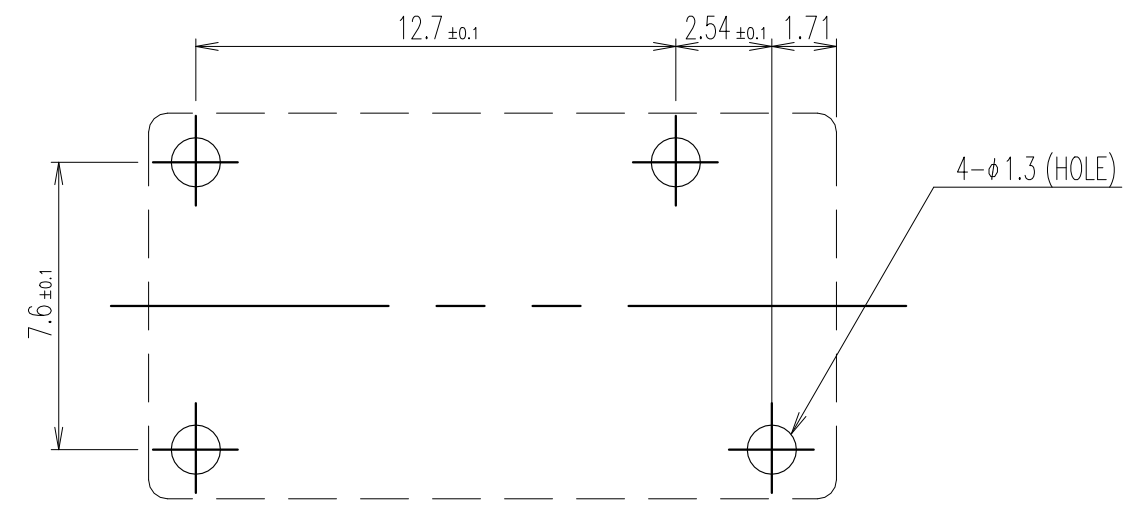
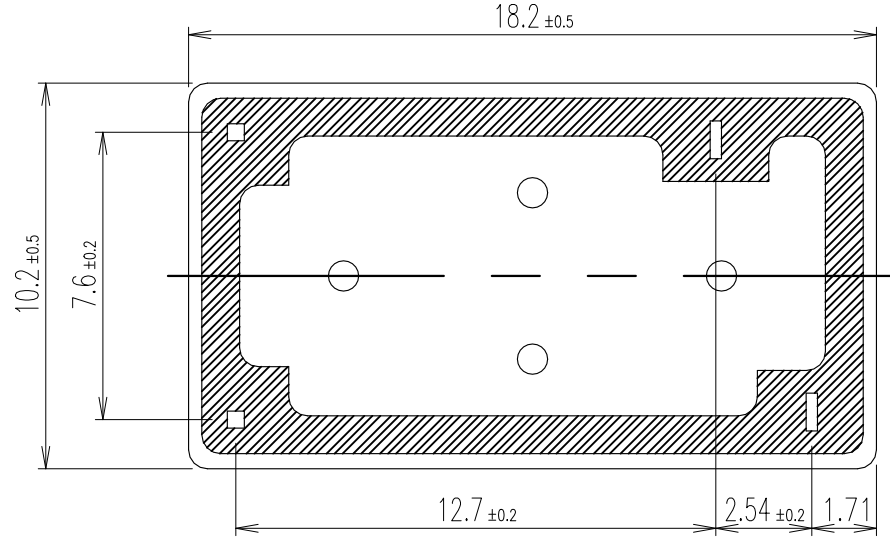


FIGURE FOR PRINTED CIRCUIT BOARD PROCESSING (BOTTOM VIEW)



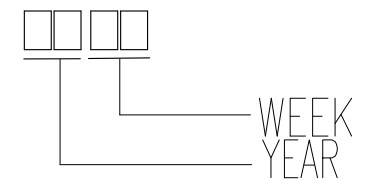
THIS DRAWING IS A CONTROLLED DOCUMENT.		DWN	H.Sasaki		TE Connectivity	
DIMENSIONS: mm		CHK	A.Nagai			
TOLERANCES UNLESS OTHERWISE SPECIFIED:		APVD	Y.Oikawa		NAME	
0 PLC	± -	PRODUCT SPEC	-		OJ-SH-DM SPEC.000 CUSTOMER DRWAING	
1 PLC	± -	APPLICATION SPEC	-		SIZE	A3
2 PLC	± -	MATERIAL	-		CAGE CODE	00779
3 PLC	± -	FINISH	-		DRAWING NO	C- 1461406
4 PLC	± -		-		RESTRICTED TO	-
ANGLES	± -		-		SCALE	5:1
			-		SHEET	1 OF 2
			-		REV	C2
CUSTOMER DRAWING						

THIS DRAWING IS UNPUBLISHED. RELEASED FOR PUBLICATION
 © COPYRIGHT - By - TE CONNECTIVITY ALL RIGHTS RESERVED.

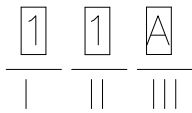
LOC	DIST	REVISIONS			
P	LTR	DESCRIPTION	DATE	DWN	APVD
HB	-	SEE SHEET 1	-	-	-

Ⓢ	OBSOLETE	1461406-6	OJ-SH-148DM, 000	107-79010	48V	OJ-SH-148DM	g
	ACTIVE	1461406-5	OJ-SH-124DM, 000	107-79010	24V	OJ-SH-124DM	f
	ACTIVE	1461406-4	OJ-SH-112DM, 000	107-79010	12V	OJ-SH-112DM	e
Ⓢ	OBSOLETE	1461406-3	OJ-SH-109DM, 000	107-79010	9V	OJ-SH-109DM	d
Ⓢ	OBSOLETE	1461406-2	OJ-SH-106DM, 000	107-79010	6V	OJ-SH-106DM	c
	ACTIVE	1461406-1	OJ-SH-105DM, 000	107-79010	5V	OJ-SH-105DM	b
Ⓢ	OBSOLETE	1461406-7	OJ-SH-103DM, 000	107-79010	3V	OJ-SH-103DM	a
	PART STATUS	TE PART NO	TE TYPE NAME	PACKAGE SPEC	PART B	PART A	TYPE

RELAY TYPE

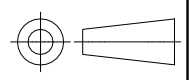
Ⓢ Ⓢ NOTE:
 1. LOT NO SYSTEM AS FOLLOWING:


- Ⓢ 2. TERMINAL DIMENSION IS BEFORE SOLDER DIP;
- Ⓢ 3. FOR THE TIN-PLATING OF THE PINS:
 +0.1mm FOR WIDTH, THICKNESS AND DIAMETER.
 +0.5mm FOR LENGTH.
- Ⓢ 4. MARKING FROM INK TO LASER.

Ⓢ 5. ADD LOT NO. SYSTEM AS FOLLOWING;

 I, DIGITS FOR DAY OF THE WEEK
 1...MONDAY IN THIS WEEK;
 2...TUESDAY IN THIS WEEK;

 7...SUNDAY IN THIS WEEK
 II, DIGITS FOR SHIFT OF THE DAY
 1...DAY SHIFT IN THIS DAY;
 2...NIGHT SHIFT IN THIS DAY;
 III, ONE CHARACTER DISTINGUISH THE LINE IDENTITY, SUCH AS: A,B.....Z

		UV RESIN	SEAL (VENT HOLE)	16
		EPOXY RESIN	SEAL (BASE & BOBBIN)	15
		3UEW	MAGNETIC WIRE	14
94V-0		P.B.T	CASE	13
94V-0		P.B.T	BASE	12
94V-0		P.B.T	BOBBIN	11
	SOLDER DIP	C.P WIRE	COIL TERMINAL	10
94V-0		P.P.S	CARD	9
		Ag ALLOY	MOVABLE CONTACT	8
		Ag	NO.CONTACT	7
		STEEL	HINGE SPRING	6
	SOLDER DIP	PBP	NO.TERMINAL	5
	SOLDER DIP	PBS	MOVABLE SPRING	4
	NIP	STEEL	CORE	3
	NIP	STEEL	ARMATURE	2
	NIP	STEEL	YOKE	1
INCOMBUSTIBILITY	TREATMENT	MATERIAL	DESCRIPTION	ITEM

THIS DRAWING IS A CONTROLLED DOCUMENT.		DWN	H.Sasaki		STE TE Connectivity		
		CHK	A.Nagai				
		APVD	Y.Oikawa				
		PRODUCT SPEC	-				
DIMENSIONS: mm		TOLERANCES UNLESS OTHERWISE SPECIFIED:		OJ-SH-DM SPEC.000 CUSTOMER DRAWING			
		0 PLC	± -			SIZE CAGE CODE DRAWING NO RESTRICTED TO	
		1 PLC	± -				
		2 PLC	± -				
		3 PLC	± -				
MATERIAL		4 PLC	± -	A3 00779 C- 1461406			
		ANGLES	± -			SCALE 5:1 SHEET 2 OF 2 REV C2	
		FINISH	-	CUSTOMER DRAWING			
						SCALE 5:1 SHEET 2 OF 2 REV C2	