

# DC-DC Boost Converter

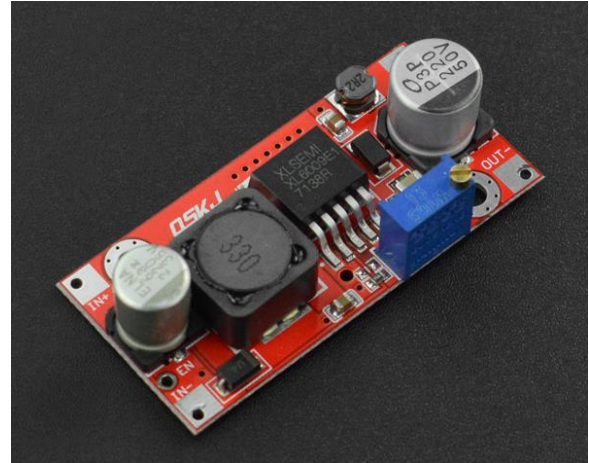
SKU:DFR0123

## INTRODUCTION

This is multipurpose boost converter, a breakout board.

The module features 5~32V input voltage and its output voltage reaches up to 50V. It allows users to use low-voltage power source to power high-voltage device.

The tiny form factor and its simplicity makes it for a very nice addition for all projects requiring an extra power module.



### Note:

1. This board does **NOT** have reverse polarity protection, so please be sure to recognize the polarity of your connections!
2. The input voltage must be **LESS** than output voltage, otherwise, it may damage the board.

## SPECIFICATION

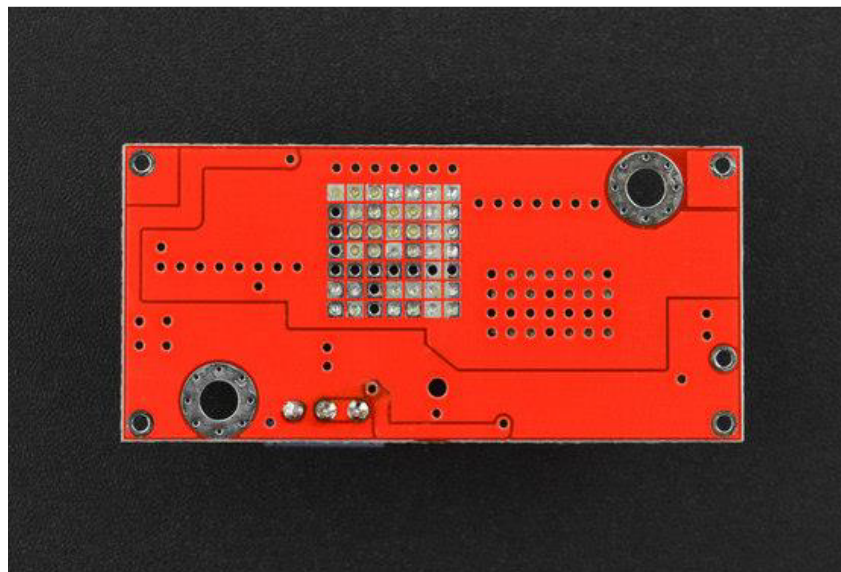
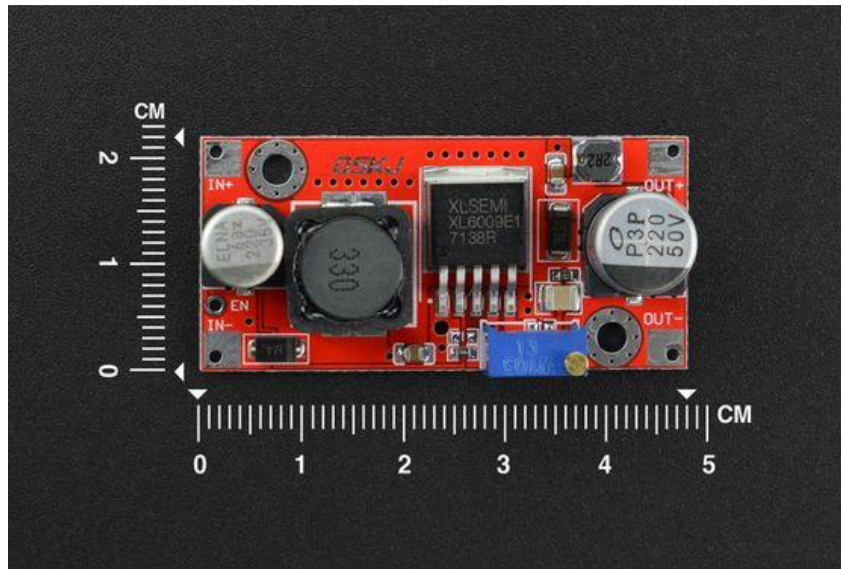
- Input voltage:5-32V
- Output voltage:50V max
- Max input current:3A
- Max Power:15W
- Efficiency: 90%
- Size:32x34x20 mm (1.25x1.3x0.8")

## *DOCUMENTS*

- XL6009 datasheet

## *SHIPPING LIST*

- DC-DC boost converter x1



DC-DC boost converter-DFRobot/8-25/21