

Features

- 1 **Low-profile design with high power supply capacity**
 - Rated current: **5A for power contact, 0.3A for signal contact**
 - **0.6mm stacking height, 1.9mm width**
- 2 **Full armored design prevents housing damage**
- 3 **Easy mating operation with wide self alignment range**
- 4 **Insert molded header and receptacle design**
 - **Solder Wicking Prevention**
- 5 **Multi-point soldering enhances PCB peeling strength**



P= 0.3mm



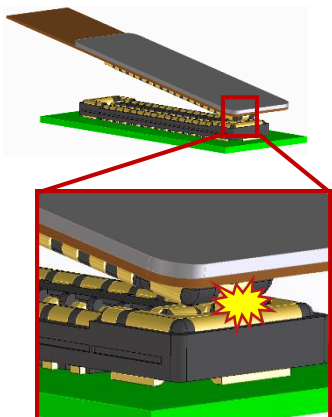
Full Armored



High-Current

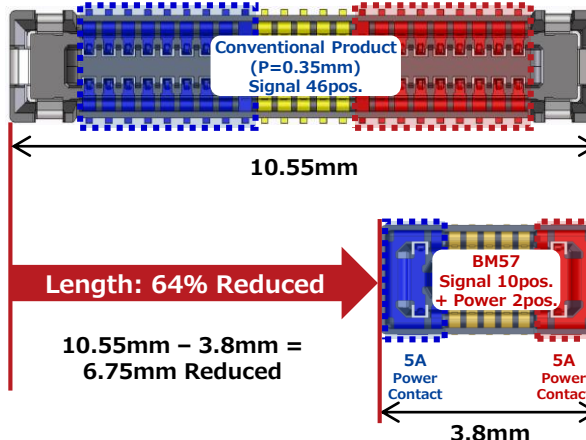
Robust Design

Fully Armored Design Prevents Housing Damage



High Current (5A)

Power Contact Saves Space



Specifications

Rated Current	Power Contact: 5A Signal Contact: 0.3A
Rated Voltage	30V AC/DC
Operating Temperature	-55 to +85°C*
Contact Resistance	Power Contact: 30mΩ Max. Signal Contact: 90mΩ Max.
Withstanding Voltage	100V AC for 1 min.
Insulation Resistance	50MΩ Min. (100V DC)
Mating Durability	10 times

*Includes the temperature rise due to current flow.

- Pin Count Variation: 10pos.