



Connecting sleeve, Colour: Orange

### Business data

Article number	<u>2876.3</u>
Article name	VBS 3/10/Z OG
GTIN (EAN)	4044211056018
Packaging unit	20
Quantity unit	PC
Weight per piece (not including packaging)	0.7 g
Weight per piece (including packaging)	0.75 g
Unit of weight	G
Customs number	85389099
Country of origin	DE
Product description	Connecting sleeve
Colour	Orange

---

### Technical data

---

#### Dimensions

Width	30 mm
-------	-------

---

#### Materials

Insulation housing	Polyamide 6.6
--------------------	---------------

---

Flammability class UL 94	V-2
--------------------------	-----

---

Working temperature, min.	-40 °C
---------------------------	--------

---

Working temperature, max.	105 °C
---------------------------	--------

---

#### Environmental Product Compliance

REACH Conform	yes
---------------	-----

---

REACH Reference date	2023-01-17
----------------------	------------

---

REACH Candidate Substance Note	No
--------------------------------	----

---

RoHS Conform	yes
--------------	-----

---

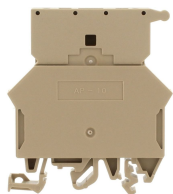
---

### Media

---

### Accessories

#### Terminal blocks



Fused terminal with disconnect plug, Screw connection, Mounting type: Mounting rail TS 35/7.5 and TS 32, Rated cross-section: 10 mm<sup>2</sup>, Width: 10 mm, Colour: Beige

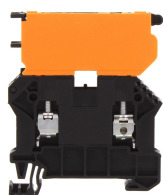
Article number	Article name	GTIN (EAN)	Packaging unit
<u>17043.2</u>	SIK 10/Z/ST BG	4044211155810	25 ST



Fuse-disconnect terminal, Screw connection, Mounting type: Mounting rail TS 35/7.5 and TS 32, Rated cross-section: 10 mm<sup>2</sup>, Width: 10 mm, Colour: Beige

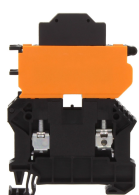
Article number	Article name	GTIN (EAN)	Packaging unit
<u>1102.2</u>	SIK 10/Z BG	4044211016395	25 ST

#### ##INVERSE##CONTA-CONNECT



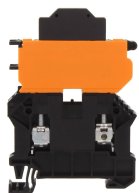
Fuse-disconnect terminal, Screw connection, Mounting type: Mounting rail TS 35/7.5, Rated cross-section: 6 mm<sup>2</sup>, Width: 8.1 mm, Colour: Black

Article number	Article name	GTIN (EAN)	Packaging unit
<u>17151.4</u>	SSIK 6/2A BK	4044211188993	50 ST



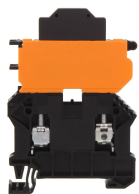
Fuse-disconnect terminal, Screw connection, Mounting type: Mounting rail TS 35/7.5, Rated cross-section: 6 mm<sup>2</sup>, Width: 8.1 mm, Colour: Black

Article number	Article name	GTIN (EAN)	Packaging unit
<u>17176.4</u>	SSIK 6/2A/LED 30-60V AC/DC BK	4044211188931	50 ST



Fuse-disconnect terminal, Screw connection, Mounting type: Mounting rail TS 35/7.5, Rated cross-section: 6 mm<sup>2</sup>, Width: 8.1 mm, Colour: Black

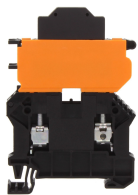
Article number	Article name	GTIN (EAN)	Packaging unit
<u>17178.4</u>	SSIK 6/2A/LED 500V AC/DC BK	4044211188948	50 ST



Fuse-disconnect terminal, Screw connection, Mounting type: Mounting rail TS 35/7.5, Rated cross-section: 6 mm<sup>2</sup>, Width: 8.1 mm, Colour: Black

Article number	Article name	GTIN (EAN)	Packaging unit
<u>17175.4</u>	SSIK 6/2A/LED 12-30V AC/DC BK	4044211188924	50 ST

### ##INVERSE##CONTA-CONNECT



Fuse-disconnect terminal, Screw connection, Mounting type: Mounting rail TS 35/7.5, Rated cross-section: 6 mm<sup>2</sup>, Width: 8.1 mm, Colour: Black

Article number	Article name	GTIN (EAN)	Packaging unit
<u>17177.4</u>	SSIK 6/2A/LED 110-250V AC/DC BK	4044211188955	50 ST



Fused terminal, Screw connection, Mounting type: Mounting rail TS 35/7.5 and TS 32, Rated cross-section: 10 mm<sup>2</sup>, Width: 10 mm, Colour: Black

Article number	Article name	GTIN (EAN)	Packaging unit
<u>17365.4</u>	SIK 10/Z PA-G BK	4044211178390	25 ST