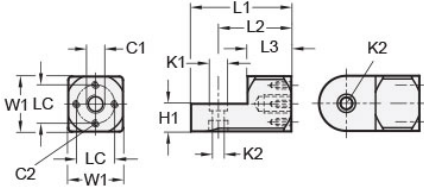




MT10:12-SWMB-M8-AN

Ruland Swivel Mounting Block, Width/Height 20mm, Length 38mm, Black Anodized Aluminum



Description

Ruland MT10:12-SWMB-M8-AN is an swivel mounting block with a M8 center thread, M4 cross threads, 10mm base height, 8.5mm recess diameter, 20mm width/height, and 38mm overall length. It is made of aluminum with a black anodized finish. Swivel mounting blocks are primarily designed to mount sensor and mounting brackets with the same width/height. In addition, this part can be combined with swivel and t-swivel clamp joints with the same width/height to make articulated swivel clamp mounting joints. Adjustable lever clamping kits with the same width/height can be attached to the swivel mounting block.

Product Specifications

Center Thread C1	M8	Cross Thread C2	M4 x 4
Counterbore 1 Diameter K1	8.5 mm	Counterbore 2 Diameter K2	5.5 mm
Width & Height W1	20 mm	Base Height H1	10 mm
Center To Center LC	14 mm	Edge To Center Of Counterbore L2	28 mm
Overall Length L1	38 mm	Hub Length LH	17 mm
Material Specification	Anodized Aluminum	Manufacturer	JW Winco/ Otto Ganter
Country of Origin	Germany	Weight (lbs)	0.051400
UPC	634529230022	Tariff Code	7609.00.0000
UNSPC	31162908		