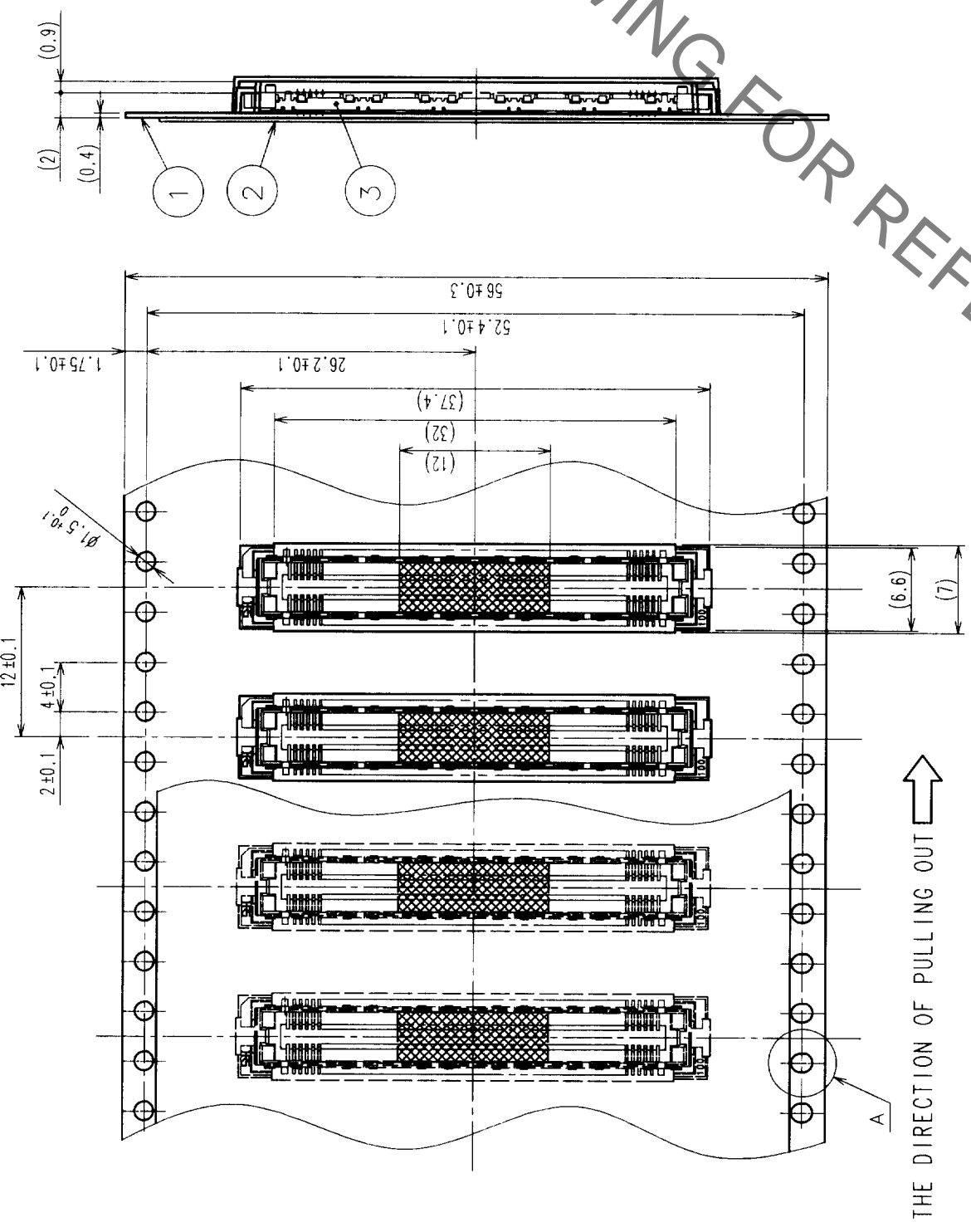
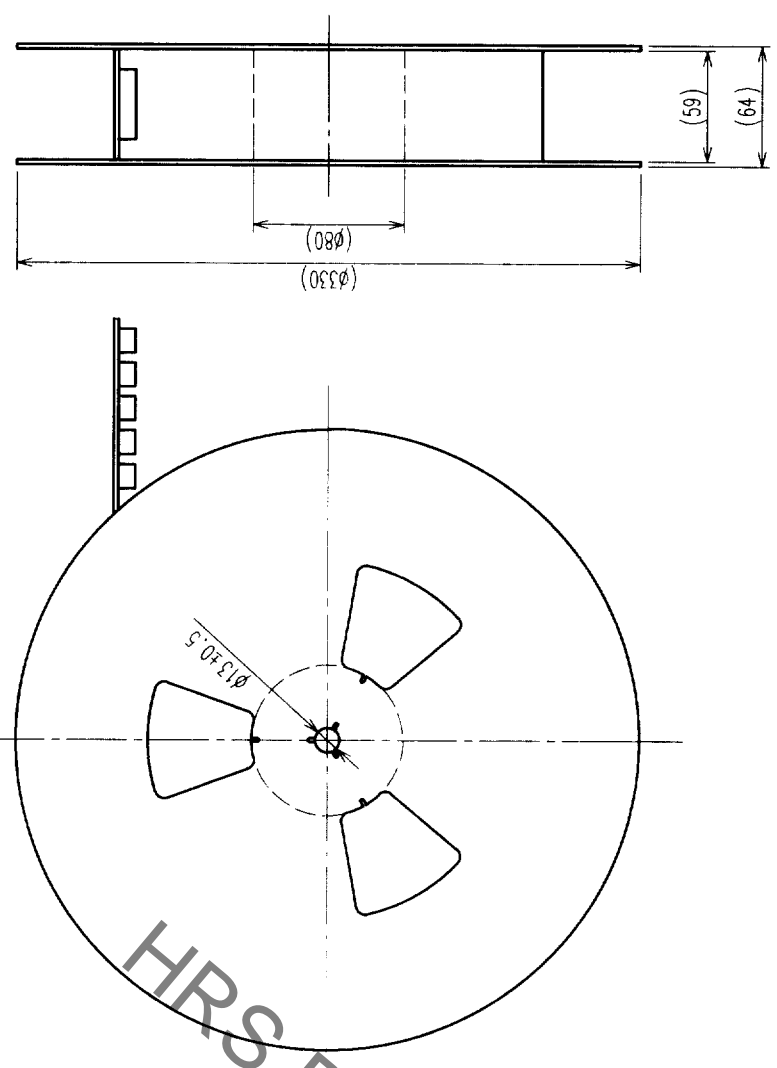


| COUNT | DESCRIPTION OF REVISIONS | BY | CHKD | DATE | COUNT | DESCRIPTION OF REVISIONS | BY | CHKD | DATE |
|-------|--------------------------|----|------|------|-------|--------------------------|----|------|------|
| △ | | | | | △ | | | | |
| △ | | | | | △ | | | | |

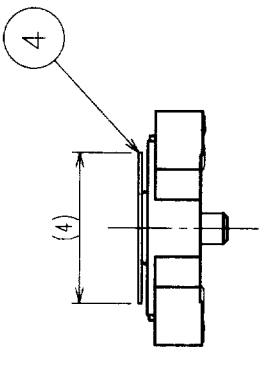


REELED DIMENSION (Free)

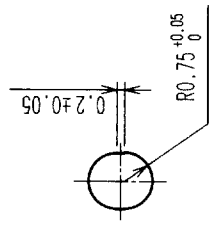


- NOTES
- 1 REEL: 1000 CONNECTORS.
 - 2 MINIMUM 10 COMPARTMENTS FROM BOTH REEL ENDS REMAIN EMPTY.
 - 3 THIS PRODUCT HAS NO POLARITY TO TAPE AND REEL PACKAGING.

DETAIL FOR TAPE PICKUP (5:1)



A (5:1)



| 2 | PET | TOP COVER TAPE | 4 | POLYIMIDE | (TAP FOR VACUUM PICKUP) |
|---------------------|----------------|--------------------------|----------|--------------------|-------------------------|
| 1 | PS | EMBOSSED CARRIER TAPE | 3 | (CONNECTOR) | |
| NO. | MATERIAL | FINISH, REMARKS | NO. | MATERIAL | FINISH, REMARKS |
| CL | CODE NO. (OLD) | | DESIGNED | CHECKED | APPROVED |
| | | | DRAWN | | RELEASED |
| DRAWING FOR PACKING | | DRAWING NO. | | PART NO. | |
| SCALE 2:1 | | EDC3-152118-02 | | FX11LA-116S-SV(22) | |
| UNITS | | HIROSE ELECTRIC CO., LTD | | CODE NO. | |
| | | HRS | | CL573-0144-1-22 | |
| | | ITEM | | 2 | |

| | |
|-----|--|
| TO | |
| PCK | |
| | |
| | |