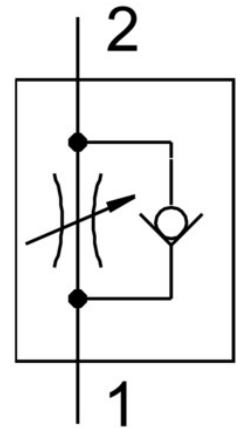
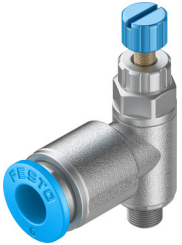


One-way flow control valve GRLA-M5-QS-6-RS-D

Part number: 197578

FESTO



Data sheet

| Feature | Value |
|--|--|
| Valve function | Exhaust air flow control non-return function |
| Pneumatic connection 1 | QS-6 |
| Pneumatic connection 2 | M5 |
| Adjusting element | Knurled screw |
| Type of mounting | Screw-in |
| Standard nominal flow rate in flow control direction | 115 l/min |
| Standard nominal flow rate in non-return direction | 70 l/min ... 110 l/min |
| Operating pressure | 0.2 bar ... 10 bar |
| Ambient temperature | -10 °C ... 60 °C |
| Maritime classification | See certificate |
| Mounting position | Any |
| Symbol | 00991452 |
| Operating pressure for entire temperature range | 0.2 bar ... 10 bar |
| Standard flow rate in flow control direction 6 -> 0 bar | 185 l/min |
| Standard flow rate in non-return direction at 6 -> 0 bar | 145 l/min ... 170 l/min |
| Operating medium | Compressed air as per ISO 8573-1:2010 [7:4:4] |
| Information on operating and pilot media | Operation with oil lubrication possible (required for further use) |
| LABS (PWIS) conformity | VDMA24364-B1/B2-L |
| Temperature of medium | -10 °C ... 60 °C |
| Nominal tightening torque | 0.8 Nm |
| Product weight | 14 g |
| Material of screwed trunnion | Brass |
| Note on materials | RoHS-compliant |
| Seals material | NBR |
| Releasing ring material | POM |
| Material of adjusting screw | High-alloy stainless steel |
| Swivel joint material | Die-cast zinc Chromated |