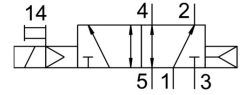
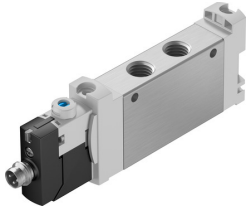


# Air solenoid valve VUVG-LK14-M52-AT-G18-1R8L-S

FESTO

Part number: 8042567



## Data sheet

Feature	Value
Valve function	5/2, monostable
Actuation type	Electrical
Valve size	14 mm
Standard nominal flow rate	660 l/min
Pneumatic working port	G1/8
Operating voltage	24V DC
Operating pressure	0.25 MPa ... 0.7 MPa
Operating pressure	2.5 bar ... 7 bar
Structural design	Piston slide with sealing ring
Reset method	Pneumatic spring
Certification	c UL us - Recognized (OL)
Certificate issuing authority	UL MH19482
Degree of protection	IP65
Exhaust air function	With flow control option
Sealing principle	Soft
Mounting position	Any
Manual override	Detenting Non-detenting
Type of control	Pilot-controlled
Pilot air supply port	Internal
Flow direction	Non-reversible
Symbol	00992908
Lap	Overlap
Signal status display	LED
Max. switching frequency	2 Hz
Switching time off	24 ms
On switching time	14 ms
Duty cycle	100%
Max. positive test pulse with 0 signal	1600 µs
Max. negative test pulse on 1 signal	3000 µs
Coil characteristics	24 V DC: 0.8 W
Permissible voltage fluctuations	+/- 10 %
Operating medium	Compressed air as per ISO 8573-1:2010 [7:4:4]
Information on operating and pilot media	Operation with oil lubrication possible (required for further use)
Vibration resistance	Transport application test with severity level 1 as per FN 942017-4 and EN 60068-2-6

<b>Feature</b>	<b>Value</b>
Shock resistance	Shock test with severity level 1 as per FN 942017-5 and EN 60068-2-27
Corrosion resistance class (CRC)	0 - No corrosion stress
LABS (PWIS) conformity	VDMA24364 zone III
Temperature of medium	-5 °C ... 50 °C
Pilot medium	Compressed air as per ISO 8573-1:2010 [7:4:4]
Ambient temperature	-5 °C ... 50 °C
Product weight	65 g
Electrical connection	3-pin M8x1 A-coded as per EN 61076-2-104 Plug
Type of mounting	On terminal strip With through-hole
Pneumatic connection 2	G1/8
Pneumatic connection 4	G1/8
Note on materials	RoHS-compliant
Seals material	HNBR NBR
Housing material	Wrought aluminum alloy