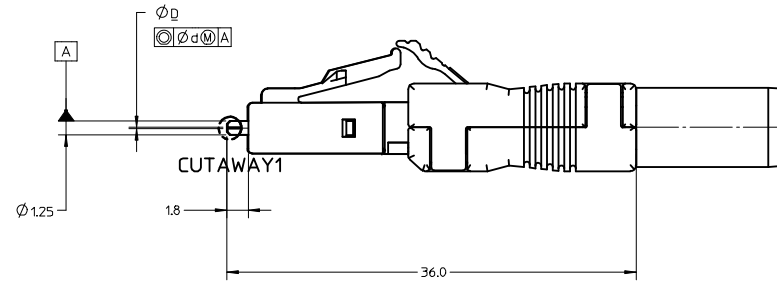
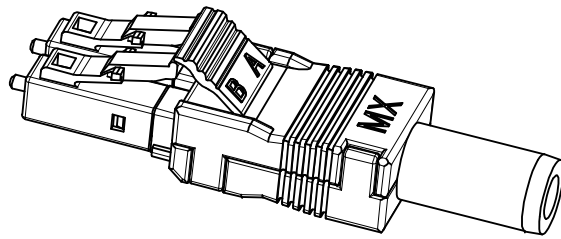
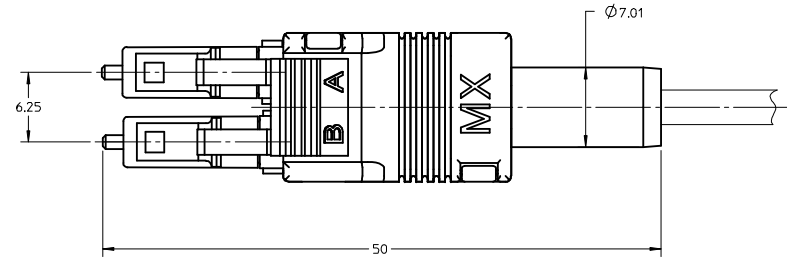
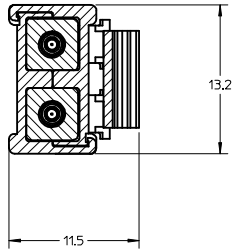


CONNECTOR P/N	CABLE TYPE	$\phi_D$ ( $\mu m$ )	$\phi_d$ ( $\mu m$ )	COLOR
106025-2330	SINGLE MODE	125.5 <sup>+0.5</sup> <sub>0</sub>	1.0	BLUE
106025-2340	MULTIMODE	127.0 <sup>+3.0</sup> <sub>0</sub>	3.0	BEIGE



NOTES:  
 1. ALL DIMENSIONS ARE FOR REFERENCE ONLY.  
 2. DUST CAPS ARE NOT SHOWN.

<b>ENTER DESCRIPTION</b> EC NO: MF2009-0105 2008/08/28 DRW: EFUNG 2008/08/28 CHKD: APPR: IGUMIN 2008/08/28	QUALITY SYMBOLS ▽=0 ▽=0	GENERAL TOLERANCES (UNLESS SPECIFIED)		DIMENSION STYLE	SCALE	DESIGN UNITS	THIRD ANGLE PROJECTION	
		mm	INCH	MM ONLY	3:1	INCH		
		4 PLACES	±---	±---	DRAWN BY	DATE	TITLE	
		3 PLACES	±---	±---	EFUNG	2008/08/20	LCD DOUBLE CONNECTOR (DUAL LINK CABLE)	
2 PLACES	±---	±---	CHECKED BY	DATE				
1 PLACE	±---	±---	APPROVED BY	DATE				
ANGULAR ±---°		DRAFT WHERE APPLICABLE MUST REMAIN WITHIN DIMENSIONS		IGUMIN	2008/08/20	MOLEX INCORPORATED		
				MATERIAL NO.	DOCUMENT NO.	SHEET NO.		
				SEE TABLE	SD-106025-2330	1 OF 1		
				THIS DRAWING CONTAINS INFORMATION THAT IS PROPRIETARY TO MOLEX INCORPORATED AND SHOULD NOT BE USED WITHOUT WRITTEN PERMISSION				