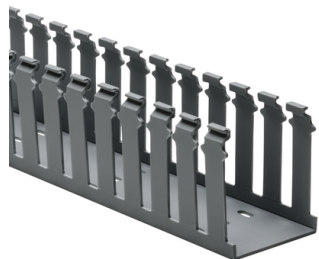


Specification Sheet

Part Number: 181-00214



Strong fingers prevent unwanted breaking.

Restricted opening prevents unintended removal of wires and permits any individual wire to be traced without disconnection.

Supplied with mounting holes to streamline installation.

Optional covers enhance protection and appearance.

Slotted Wall Wiring Duct, 2.5" x 3", Adhesive, PVC, Gray, 120ft/Carton

Article Number 181-00214

Type SLA2.5X3

Color Gray (GY)

Quantity Per carton

Product Description HellermannTyton Slotted Wall Duct features breakaway fingers that provide additional access for wire leads. Each section of the duct is provided with two score lines. The upper score line is used to break away fingers when a wider opening is required. The lower score line allows the sidewall to be smoothly cut for joints and Ts. Pressure-sensitive, rubber-based adhesive backing aids in temporary positioning.

Short Description Slotted Wall Wiring Duct, 2.5" x 3", Adhesive, PVC, Gray, 120ft/Carton

Global Part Name SLA2.5X3-PVC-GY

Length L (Imperial) 6.0

Length L (Metric) 1.83

Fixation Method Adhesive

Width W (Imperial) 2.5

Width W (Metric) 63.5

Height H (Imperial) 3.07

Height H (Metric) 77.9

Mounting Hole Centers (Imperial) 4.0

Material Polyvinylchloride (PVC)

Material Shortcut PVC

Flammability Self-extinguishing

Halogen Free No

Operating Temperature +122°F (+50°C)

| | |
|------------------------------|--|
| Reach Compliant (Article 33) | No |
| ROHS Compliant | Yes |
| Certification/Specification | UL CSA EN 50085-1:2005 + A1:2013 EN 50085-2-3_1A |
| UL Recognized (US) | Yes |
| Package Quantity (Imperial) | 120.0 |
| Package Quantity (Metric) | 36.58 |
| Customs Number | 3925900000 |

© 2023 HellermannTyton. All Rights Reserved.

[Contact Us](#) [RoHS/WEEE Compliance](#) [Disclaimer](#) [Terms and Conditions](#)