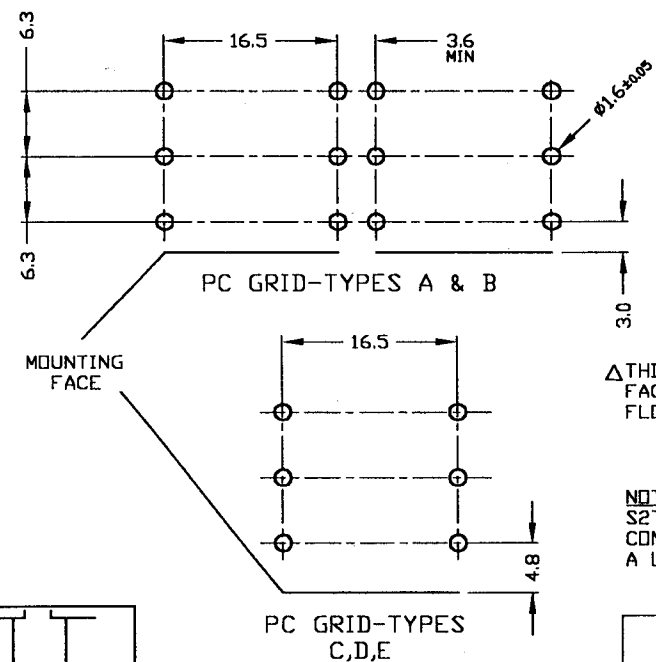
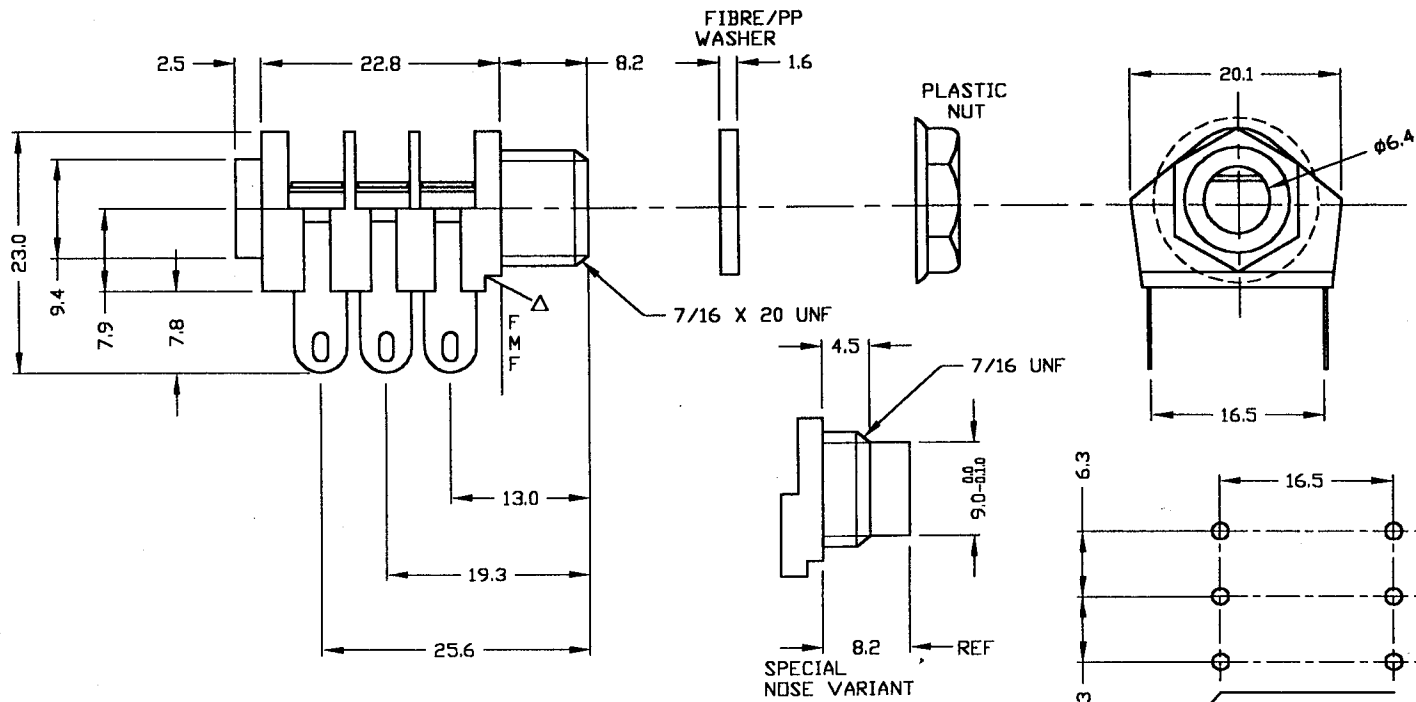


ISS.	AMEND	DATE
1	REDRAWN	11/1/91
2	REDRAWN	15/6/92
3	PC-C KINK ADD	17/11/92
4	TOL ADDED	3/12/92
5		23/3/93
6	PCA/S REDRAWN	13/4/95
7	NOTE AMENDED	08/1/96
8	SEE MOD 0214	09/8/96
9	SEE MOD 0221	14/3/97
10	WASHER MATL	26/6/01
11	CORRECTED	23/4/02



Δ THIS RECESS IS TO FACILITATE MOUNTING IN FLOWSOLDER JIGS

NOTE S2T JACKS HAVE ALL CONTACTS PLATED WITH A LOW LOSS FINISH

BACK OF SOCKET ←		→ FRONT OF SOCKET	
<p>SPECIAL REVERSED CUT CONTACT</p> <p>12.5 TO C/L</p> <p>NOTE MODEL PCA/SA HAS 10mm TO C/L</p> <p>PCA/S/REV</p>	<p>12.5 TO C/L</p> <p>1.3 WIDE</p> <p>3.2</p> <p>(12.5 = SPECIAL)</p> <p>PC TYPE A/S</p>	<p>10.0 TO C/L</p> <p>4.0</p> <p>1.3 WIDE</p> <p>3.0</p> <p>PC TYPE A</p>	<p>4.1</p> <p>1.3 WIDE</p> <p>PC TYPE B</p>
<p>4.3</p> <p>1.3 WIDE</p> <p>PC TYPE C</p>	<p>14</p> <p>1.3</p> <p>R0.90</p> <p>0.80</p> <p>0.85</p> <p>16.8±0.2</p> <p>PC-C 'KINKED'</p>	<p>15.0 TO C/L</p> <p>1.3 WIDE</p> <p>4.0</p> <p>PC TYPE D</p>	<p>17.5 TO C/L</p> <p>1.3 WIDE</p> <p>4.0</p> <p>PC TYPE E</p>

MAX PANEL THICKNESS 4.6mm

● FOR KINKED LEGS USE Ø1.5 HOLE ±0.05mm

TOLERANCE
NO DEC. PLACE ±
1 DEC. PLACE ±0.20
2 DEC. PLACE ±
HOLE DIA. ±
ANGLES ±1/2°
UNLESS OTHERWISE STATED
WHERE USED F.R.
SCALE N.T.S.

DIMENSIONS IN MILLIMETERS UNLESS OTHER WISE STATED. WORK TO DIMENSIONS. DO NOT SCALE DRAWING. 3rd ANGLE PROJECTION. REMOVE ALL BURRS. IF IN DOUBT ASK.

Cliff Electronic Components, Inc.
 4876 East Second Street, Benicia, CA 94510 USA
 Tel: (707) 746 8090 Fax: (707) 746 8092

MATERIAL NYLON / NIAG / FIBRE / PP
FINISH AS MOULDED / MICROFINISH
DRAWN MST
APPD. RWT

TITLE S2 JACK SOCKET
DRWG. No. CL11301/1265

FORM: A4DRWG