

Feed-through terminal, Screw connection, Mounting type: Mounting rail TS 35/7.5 and TS 32, Rated cross-section: 4 mm<sup>2</sup>, Width: 6 mm, Colour: Black

RAL: 9005

### Business data

|  |                       |
|--|-----------------------|
| Article number                             | 1001.4                |
| Article name                               | RK 2,5-4 BK           |
| GTIN (EAN)                                 | 4044211000301         |
| Packaging unit                             | 100                   |
| Quantity unit                              | PC                    |
| Weight per piece (not including packaging) | 9.8 g                 |
| Weight per piece (including packaging)     | 10.42 g               |
| Unit of weight                             | G                     |
| Customs number                             | 85369010              |
| Country of origin                          | CZ                    |
| Prio-Article                               | 1001.2                |
| Product description                        | Feed-through terminal |

# Data sheet

## 1001.4 RK 2,5-4 BK

### Technical data

#### Dimensions

|                  |         |
|------------------|---------|
| Length           | 48 mm   |
| Width            | 6 mm    |
| Height TS 35/7.5 | 47 mm   |
| Height TS 32     | 51.5 mm |

#### Ratings

|   |                   |
|---|-------------------|
| Rated voltage                                   | 800 V             |
| Rated current                                   | 32 A              |
| Rated cross-section                             | 4 mm <sup>2</sup> |
| Rated impulse voltage                           | 8 kV              |
| Overvoltage category                            | III               |
| Contamination degree                            | 3                 |
| Maximum power dissipation for nominal condition | 1.02 W            |

#### Connection data

|  |                     |
|--|---------------------|
| Connection principle                                     | Screw connection    |
| Connection position                                      | Lateral             |
| Connections  | 2                   |
| Number of terminals per level                            | 2                   |
| Number of levels   | 1                   |
| Wire cross-section single-core (rigid) / stranded, min.  | 0.2 mm <sup>2</sup> |
| Wire cross-section single core (rigid)/stranded, max.    | 6 mm <sup>2</sup>   |
| Wire cross-section stranded, min.                        | 0.2 mm <sup>2</sup> |
| Wire cross-section stranded, max.                        | 6 mm <sup>2</sup>   |
| Wire cross-section stranded with wire-end ferrules, min. | 0.2 mm <sup>2</sup> |
| Wire cross-section stranded with wire-end ferrules, max. | 4 mm <sup>2</sup>   |
| Wire cross-section AWG, min.                             | 22                  |
| Wire cross-section AWG, max.                             | 11                  |
| Stripping length   | 12 mm               |
| Screw head   | Slotted             |
| Screw threading  | M 3                 |
| Tightening torque, min.                                  | 0.5 Nm              |
| Tightening torque, max.                                  | 1 Nm                |

# Data sheet

## 1001.4 RK 2,5-4 BK

---

### Technical data

---

#### Materials

|                           |               |
|---------------------------|---------------|
| Insulation housing        | Polyamide 6.6 |
| Flammability class UL 94  | V-2           |
| Working temperature, min. | -40 °C        |
| Working temperature, max. | 105 °C        |

#### Further technical data

|                                     |                                   |
|-------------------------------------|-----------------------------------|
| Mounting type                       | Mounting rail TS 35/7.5 and TS 32 |
| Gauge plug acc. to EN 60 947-1      | A4                                |
| Number of cross-connection channels | 1                                 |
| End plate required                  | ✓                                 |
| Number of test pick-off options     | 1                                 |

#### Environmental Product Compliance

|                                |            |
|--------------------------------|------------|
| REACH Conform                  | yes        |
| REACH Reference date           | 2022-06-10 |
| REACH Candidate Substance Note | No         |
| RoHS Conform                   | yes        |

# Data sheet

## 1001.4 RK 2,5-4 BK

### Approvals

#### Standards and regulations

|              |                |
|--------------|----------------|
| EAC approval | TR ZU 004/2011 |
|--------------|----------------|

|                      |     |
|----------------------|-----|
| EAC approval granted | yes |
|----------------------|-----|

#### CSA approval

|              |              |
|--------------|--------------|
| CSA approval | C22.2 No 158 |
|--------------|--------------|

|                      |     |
|----------------------|-----|
| CSA approval granted | yes |
|----------------------|-----|

|                               |       |
|-------------------------------|-------|
| CSA Usegroup C: rated voltage | 600 V |
|-------------------------------|-------|

|                               |      |
|-------------------------------|------|
| CSA Usegroup C: rated current | 40 A |
|-------------------------------|------|

|                                  |    |
|----------------------------------|----|
| CSA wire cross-section AWG, min. | 22 |
|----------------------------------|----|

|                                  |    |
|----------------------------------|----|
| CSA wire cross-section AWG, max. | 10 |
|----------------------------------|----|

|                      |       |
|----------------------|-------|
| CSA stripping length | 12 mm |
|----------------------|-------|

|                  |      |
|------------------|------|
| CSA torque, max. | 1 Nm |
|------------------|------|

|                  |        |
|------------------|--------|
| CSA torque, min. | 0.5 Nm |
|------------------|--------|

|                 |              |
|-----------------|--------------|
| CSA File Number | 042110_0_000 |
|-----------------|--------------|

#### KEMA KEUR approval

|                    |                   |
|--------------------|-------------------|
| KEMA KEUR approval | EN 60947-7-1:2009 |
|--------------------|-------------------|

|                            |     |
|----------------------------|-----|
| KEMA KEUR approval granted | yes |
|----------------------------|-----|

|                    |       |
|--------------------|-------|
| KEMA rated voltage | 800 V |
|--------------------|-------|

|                    |      |
|--------------------|------|
| KEMA rated current | 32 A |
|--------------------|------|

|                            |      |
|----------------------------|------|
| KEMA rated impulse voltage | 6 kV |
|----------------------------|------|

|   |                     |
|---|---------------------|
| KEMA wire cross-section single core (rigid), min. | 0.2 mm <sup>2</sup> |
|---|---------------------|

|   |                   |
|---|-------------------|
| KEMA wire cross-section single-core (rigid), max. | 4 mm <sup>2</sup> |
|---|-------------------|

|  |                     |
|--|---------------------|
| KEMA wire cross-section stranded, min. | 0.2 mm <sup>2</sup> |
|--|---------------------|

|  |                   |
|--|-------------------|
| KEMA wire cross-section stranded, max. | 4 mm <sup>2</sup> |
|--|-------------------|

|                   |        |
|-------------------|--------|
| KEMA torque, min. | 0.5 Nm |
|-------------------|--------|

|                   |      |
|-------------------|------|
| KEMA torque, max. | 1 Nm |
|-------------------|------|

# Data sheet

## 1001.4 RK 2,5-4 BK

### Approvals

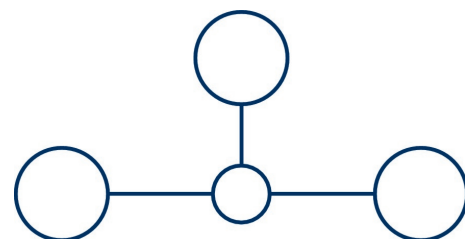
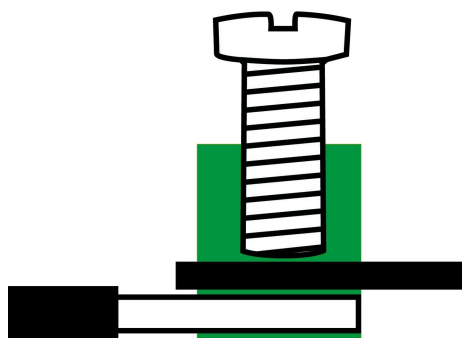
#### UL Recognized

|   |           |
|---|-----------|
| UL approval   | UL 1059   |
| UL Usegroup C: rated voltage                        | 600 V     |
| UL Usegroup C: rated current                        | 30 A      |
| UL wire cross-section single-core (rigid) AWG, min. | 22        |
| UL wire cross-section single-core (rigid) AWG, max. | 10        |
| UL wire cross-section stranded AWG, min.            | 22        |
| UL wire cross-section stranded AWG, max.            | 10        |
| UL torque   | 7.3 Lb In |
| UL wire material                                    | Cu        |
| UL factory wiring                                   | 1         |
| UL field wiring                                     | 1         |
| UL File Number                                      | E95701    |
| UL Recognized                                       | 1         |

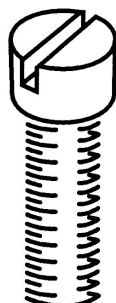
#### German Lloyd approval

|                            |   |
|----------------------------|---|
| DNV GL Certificate number  | TAE000014T                                |
| DNV GL Location Classes    | Temperature: B, Humidity: B, Vibration: A |
| DNV GL approval granted    | 1   |
| DNV GL rated cross-section | 4 mm <sup>2</sup>                         |
| DNV GL rated current       | 34 A                                      |
| DNV GL rated voltage       | 750 V                                     |
| DNV GL test standard       | IEC 60947-7-1:2002                        |

**Media**



**M3**



### Accessories

#### Cover



Cover, Length: 24 mm, Width: 24 mm, Colour: Yellow

| Article number | Article name   | GTIN (EAN)    | Packaging unit |
|----------------|----------------|---------------|----------------|
| <u>2494.0</u>  | AD 4/24/B/E YE | 4044211052959 | 50 ST          |



Cover, Length: 24 mm, Width: 24 mm, Colour: Yellow

| Article number | Article name | GTIN (EAN)    | Packaging unit |
|----------------|--------------|---------------|----------------|
| <u>2011.0</u>  | AD 4/24/B YE | 4044211048143 | 50 ST          |



Cover, Length: 24 mm, Width: 20 mm, Colour: Yellow

| Article number | Article name   | GTIN (EAN)    | Packaging unit |
|----------------|----------------|---------------|----------------|
| <u>2493.0</u>  | AD 4/24/B/E YE | 4044211052942 | 50 ST          |



Cover, Length: 26.5 mm, Width: 6 mm, Colour: Yellow

| Article number | Article name | GTIN (EAN)    | Packaging unit |
|----------------|--------------|---------------|----------------|
| <u>2953.0</u>  | AD 1/6/B YE  | 4044211056810 | 50 ST          |



Cover, Length: 26.5 mm, Width: 6 mm, Colour: White

| Article number | Article name | GTIN (EAN)    | Packaging unit |
|----------------|--------------|---------------|----------------|
| <u>2965.0</u>  | AD 1/6 WH    | 4044211056940 | 50 ST          |



Cover, Length: 24 mm, Width: 20 mm, Colour: Yellow

| Article number | Article name | GTIN (EAN)    | Packaging unit |
|----------------|--------------|---------------|----------------|
| <u>2079.0</u>  | AD 4/24/B YE | 4044211048877 | 50 ST          |

#### End plate

# Data sheet

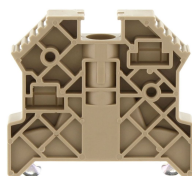
## 1001.4 RK 2,5-4 BK



End plate, Width: 1.5 mm, Colour: Beige

| Article number | Article name | GTIN (EAN)    | Packaging unit |
|----------------|--------------|---------------|----------------|
| <u>2001.2</u>  | AP 2,5-10 BG | 4044211047979 | 50             |

### End stop



End stop, Mounting type: Mounting rail TS 35/7.5, Width: 9.5 mm, Colour: Beige

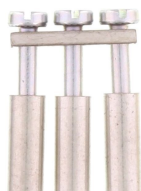
| Article number | Article name  | GTIN (EAN)    | Packaging unit |
|----------------|---------------|---------------|----------------|
| <u>2828.0</u>  | ES 35/K/ST BG | 4044211055547 | 50             |



End stop, Mounting type: Mounting rail TS 35/7.5, Width: 7.5 mm, Colour: Beige

| Article number | Article name | GTIN (EAN)    | Packaging unit |
|----------------|--------------|---------------|----------------|
| <u>2005.2</u>  | ES 35 BG     | 4044211048082 | 50             |

### Cross-connector



Cross-connector, No. of poles: 3, Mounting type: Can be screwed on, Width: 17 mm, Rated cross-section: 4 mm<sup>2</sup>, Colour: natural

| Article number | Article name | GTIN (EAN)    | Packaging unit |
|----------------|--------------|---------------|----------------|
| <u>2020.0</u>  | Q 3          | 4044211048235 | 50 ST          |



Cross-connector, No. of poles: 2, Mounting type: Can be screwed on, Width: 10.9 mm, Rated cross-section: 4 mm<sup>2</sup>, Colour: natural

| Article number | Article name | GTIN (EAN)    | Packaging unit |
|----------------|--------------|---------------|----------------|
| <u>2019.0</u>  | Q 2          | 4044211048228 | 50 ST          |



Cross-connector, No. of poles: 4, Mounting type: Can be screwed on, Width: 23.1 mm, Rated cross-section: 4 mm<sup>2</sup>, Colour: natural

| Article number | Article name | GTIN (EAN)    | Packaging unit |
|----------------|--------------|---------------|----------------|
| <u>2021.0</u>  | Q 4          | 4044211048242 | 20 ST          |



# Data sheet

## 1001.4 RK 2,5-4 BK

### Cross-connector



Cross-connector, No. of poles: 10, Mounting type: Can be screwed on, Width: 59.7 mm, Rated cross-section: 4 mm<sup>2</sup>, Colour: natural

| Article number | Article name | GTIN (EAN)    | Packaging unit |
|----------------|--------------|---------------|----------------|
| <u>2022.0</u>  | Q 10         | 4044211048259 | 10 ST          |

### Insulated cross-connector



Insulated cross-connector, No. of poles: 4, Mounting type: Can be screwed on, Width: 21.9 mm, Colour: Yellow

| Article number | Article name | GTIN (EAN)    | Packaging unit |
|----------------|--------------|---------------|----------------|
| <u>2742.2</u>  | QI 4 YE      | 4044211054823 | 20 ST          |



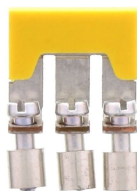
Insulated cross-connector, No. of poles: 10, Mounting type: Can be screwed on, Width: 59.7 mm, Colour: Yellow

| Article number | Article name | GTIN (EAN)    | Packaging unit |
|----------------|--------------|---------------|----------------|
| <u>2743.2</u>  | QI 10 YE     | 4044211054830 | 10 ST          |



Insulated cross-connector, No. of poles: 2, Mounting type: Can be screwed on, Width: 10.4 mm, Colour: Yellow

| Article number | Article name | GTIN (EAN)    | Packaging unit |
|----------------|--------------|---------------|----------------|
| <u>2740.2</u>  | QI 2 YE      | 4044211054809 | 50 ST          |



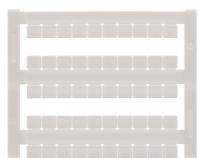
Insulated cross-connector, No. of poles: 3, Mounting type: Can be screwed on, Width: 16.5 mm, Colour: Yellow

| Article number | Article name | GTIN (EAN)    | Packaging unit |
|----------------|--------------|---------------|----------------|
| <u>2741.2</u>  | QI 3 YE      | 4044211054816 | 50 ST          |

# Data sheet

## 1001.4 RK 2,5-4 BK

### Quick marking



Terminal marker / Pocket Maxicard, Length: 5 mm, Width: 6 mm, Colour: White

| Article number | Article name   | GTIN (EAN)    | Packaging unit |
|----------------|----------------|---------------|----------------|
| <u>4702.7</u>  | PMC SB 6/50 WH | 4044211089986 | 500 ST         |

### Screwdriver

Screwdriver with bare blade, Colour: Black-grey



| Article number | Article name | GTIN (EAN)    | Packaging unit |
|----------------|--------------|---------------|----------------|
| <u>1086.0</u>  | SDB 0,6x3,5  | 4044211014797 | 1 ST           |

### Test adapters



Test adapter, Length: 37.3 mm, Pitch size: 6 mm, Colour: Beige

| Article number | Article name | GTIN (EAN)    | Packaging unit |
|----------------|--------------|---------------|----------------|
| <u>2813.0</u>  | TA 6/1/ST    | 4044211055400 | 10 ST          |

### Insulation plate



Insulation plate, Colour: Beige

| Article number | Article name | GTIN (EAN)    | Packaging unit |
|----------------|--------------|---------------|----------------|
| <u>2003.2</u>  | TRS 1 BG     | 4044211048068 | 100            |

### Partition plate



Partition plate, Width: 1.5 mm, Colour: Beige

| Article number | Article name | GTIN (EAN)    | Packaging unit |
|----------------|--------------|---------------|----------------|
| <u>2002.2</u>  | TW 2,5-10 BG | 4044211048044 | 50             |

# Data sheet

## 1001.4 RK 2,5-4 BK

---

### ##INVERSE##CONTA-CONNECT

---



Test adapter, Length: 37.3 mm, Pitch size: 6 mm, Colour: Beige

| Article number | Article name | GTIN (EAN)    | Packaging unit |
|----------------|--------------|---------------|----------------|
| <u>2813.0</u>  | TA 6/1/ST    | 4044211055400 | 10 ST          |

---