

**Power Inductor AMHS Series**

**Automotive  
AEC-Q200**

RoHS Compliant  
Halogen Free  
REACH Compliant



- Shield
- Wire Wound
- Metal
- Ultra High Current

**Part Numbering**

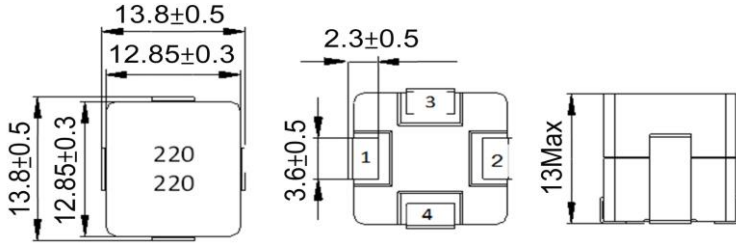
<b>A</b>	<b>MHS</b>	<b>00</b>	<b>131313</b>	<b>100</b>	<b>L</b>	<b>A3</b>
Grade	Series Name	Control Code	Dimensions Code (mm)	Inductance (uH)	Tolerance	Internal Code
			131313 13.8x13.8x13	8R2 8.2 100 10 220 22	L ±15%	A3 A6 B1 C3 E1

**Power Inductor AMHS Series**

**Automotive  
AEC-Q200**

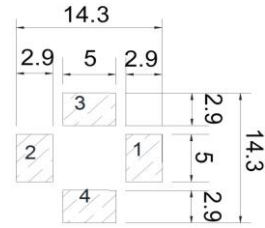
**AMHS00131313 Type**

**■ Dimensions**



unit:mm

**■ Recommended Land Pattern**



unit:mm

**■ Electrical Characteristics**

Part No.	Inductance (uH)	Test Freq.	RDC (mΩ)±10%	Isat (A)Typ.	Irms (A)Typ.	Tolerance (±%)	Marking
AMHS001313136R8LA3	6.8	100kHz,1V	13.5	30	11.5	15	6R8
AMHS001313138R2LA6	8.2	100kHz,1V	16	25	10	15	8R2
AMHS00131313100LB1	10	100kHz,1V	20.5	21	9	15	100
AMHS00131313150LC3	15	100kHz,1V	33.2	16	7	15	150
AMHS00131313220LE1	22	100kHz,1V	50	15	5.5	15	220

**Note: When ordering, please specify tolerance code. Tolerance: L=±15%**

1. Operating temperature range - 40°C ~ 125°C(Including self - temperature rise)
2. Isat for Inductance drop 20% from its value without current
3. I rms for a 40°C temperature rise from 25°C ambient with current

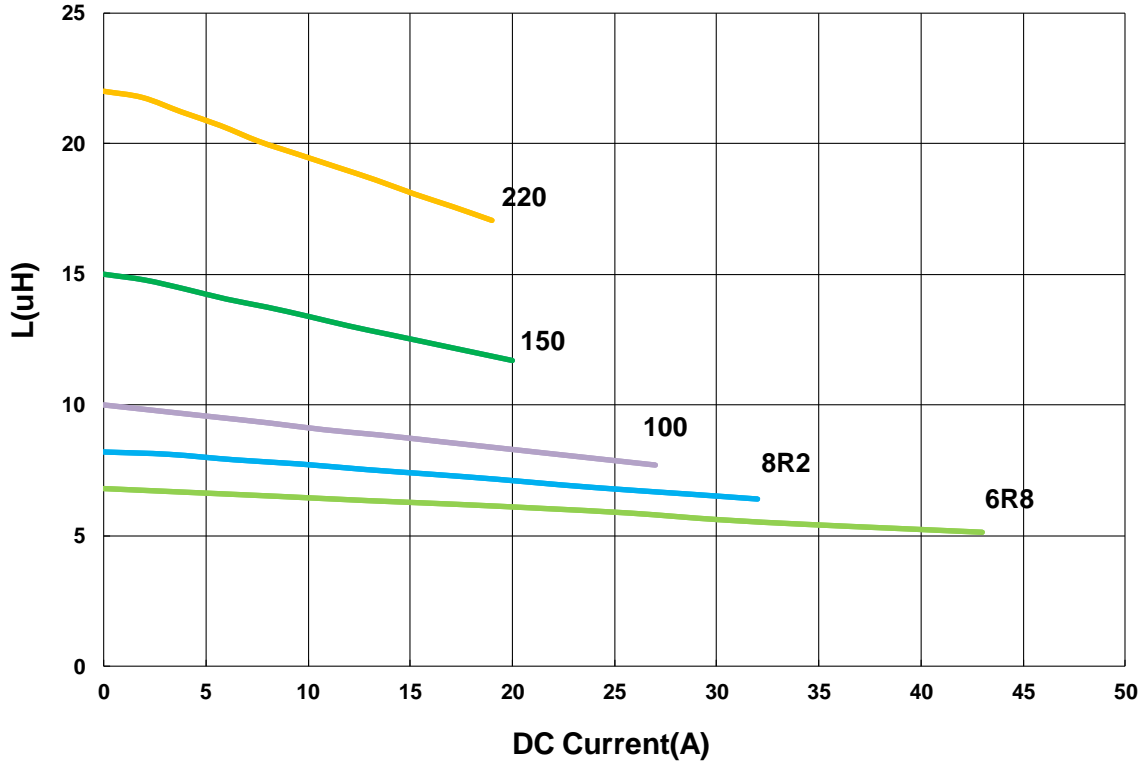
**Power Inductor AMHS Series**

**Automotive  
AEC-Q200**

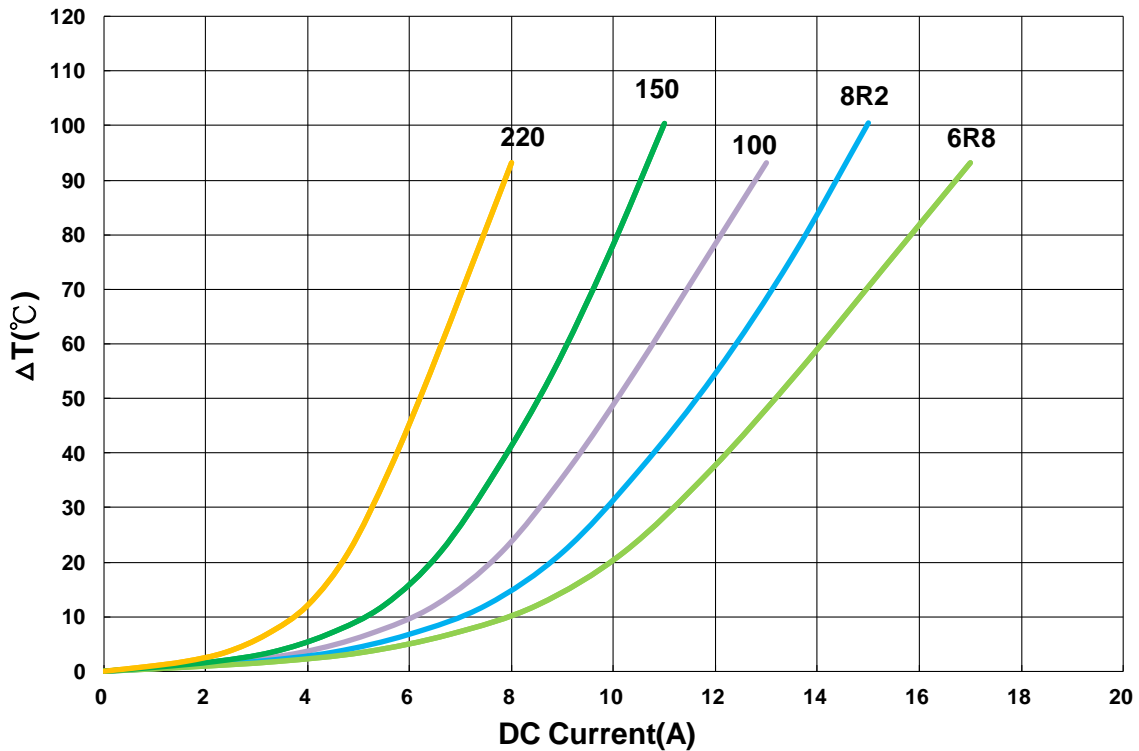
**AMHS00131313 Type**

**■ Characteristics Graph**

**Inductance vs DC Current**



**Temperature Change v.s DC Current**

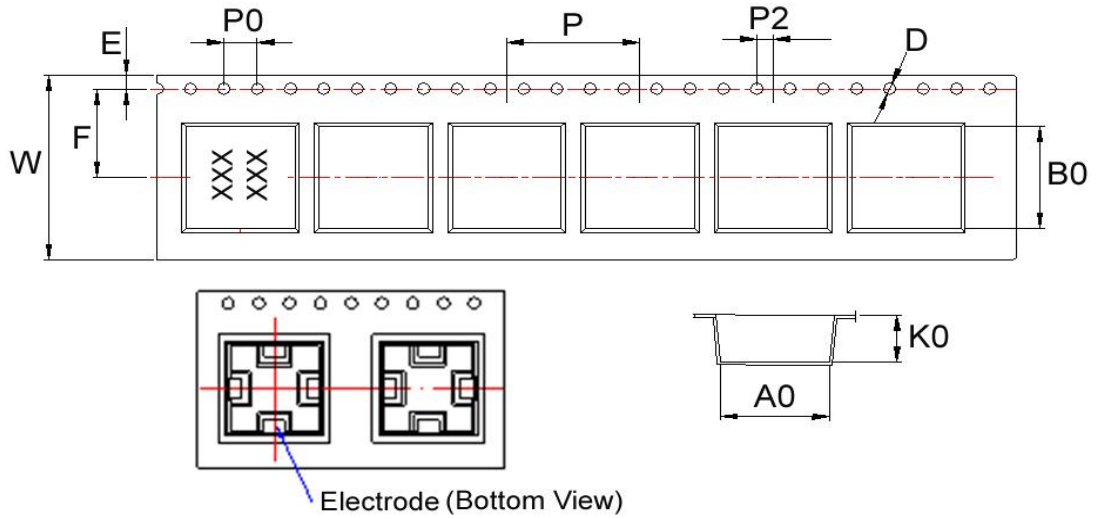


**Power Inductor AMHS Series**

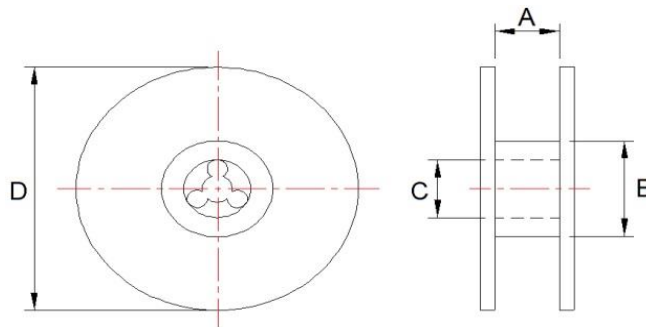
**Automotive  
AEC-Q200**

**■ Packaging**

Tape Dimensions



Reel Dimensions



Dimensions in mm

TYPE	Tape Dimensions										Reel Dimensions				Quantity
	A0	B0	K0	D	E	F	W	P	P0	P2	A	B	C	D	PCS / REEL
AMHS00131313	14.5	14.5	13.2	1.5	1.5	11.5	24	20	4	2	24	100	13.5	330	250