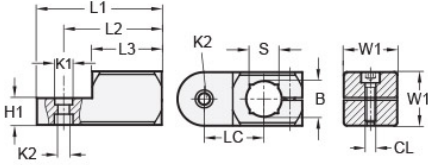




MT20-CCSWV-30-A

Ruland Swivel Clamp Joint, Swivel Thru Hole 6.5mm, Clamp Width 30mm, Thru Hole 20mm, Clamp Screw M6, L 70mm, Aluminum




Description

Ruland MT20-CCSWV-30-A is a swivel clamp joint with a thru hole for 20mm round or 16mm square tube, M6 clamp screw, 15mm base height, 30mm width and height, and 70mm overall length. It is designed to fit with MT20 swivel clamp bases, MT20 clamp connectors and mounting blocks, and MT20 round and square tubes. When combined with a swivel bases or attachment clamp joints, it is an ideal articulating mounting solution for screens, sensors, reflectors, plexiglass machine guards, and other components that require frequent adjustments. The vertical bore is parallel to the swivel axis. An MT20-SWALK-M6-30 adjustable clamping handle can be used to join it to other Ruland swivel components or tubes for rapid repositioning without the use of tools. This part is aluminum with a matte tumbled finish for use in most industrial environments. MT20-CCSWV-30-A is manufactured by Otto Ganter, inventoried by Ruland, and RoHS3 compliant.

Product Specifications

Thru Hole Diameter B	20 mm	Thru Hole Tolerance	+0.13/-0 mm
Square Thru Hole S	16 mm	Counterbore 1 Diameter K1	10 mm
Counterbore 2 Diameter K2	6.5 mm	Clamp Screw CL	M6
Overall Length L1	70 mm	Hub Length LH	39 mm
Edge To Center Of Counterbore L2	55 mm	Center To Center LC	33.5 mm
Width & Height W1	30 mm	Base Height H1	15 mm
Material Specification	Aluminum	Manufacturer	JW Winco/ Otto Ganter
Country of Origin	Germany	Weight (lbs)	0.220200
UPC	634529230534	Tariff Code	7609.00.0000
UNSPC	31162908		

Note 1 Performance ratings are for guidance only. The user must determine suitability for a particular application.

Prop 65  **WARNING** This product can expose you to the chemical Nickel (metallic), known to the State of California to cause cancer. For more information go to www.P65Warnings.ca.gov.