



Electrical specifications

Center Frequency: 915 MHz
Bandwidth: F0 ±13 MHz
VSWR: 2.3 : 1 max
Input / Output Impedance: 50 Ohms
Passband: 902-928 MHz
Passband Insertion Loss: 2.6 dB max
Passband Ripple: 1.2 dB max
Rejection: 27 dB min 837.5 MHz
Rejection 2: 20 dB min 850 MHz
Rejection 3: 17 dB min 992.5 MHz
Power Handling: 3.0 watt typ.

Mechanical

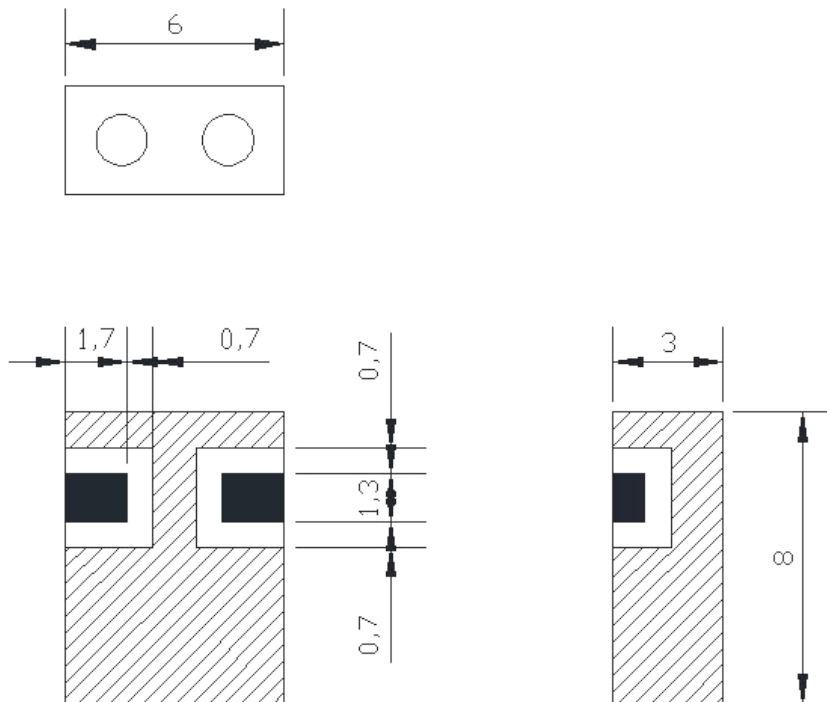
Mounting Method: SMT
Dimensions: 8.0mm x 6.0mm x 3.0mm

Environmental

Operating Temperature: -35°C to 85°C
Storage Temperature: -50°C to +90°C

This product is RoHs compliant.

Outline Drawing:



GROUND
 PORT

UNIT : mm

Tolerance : +/-0.3mm

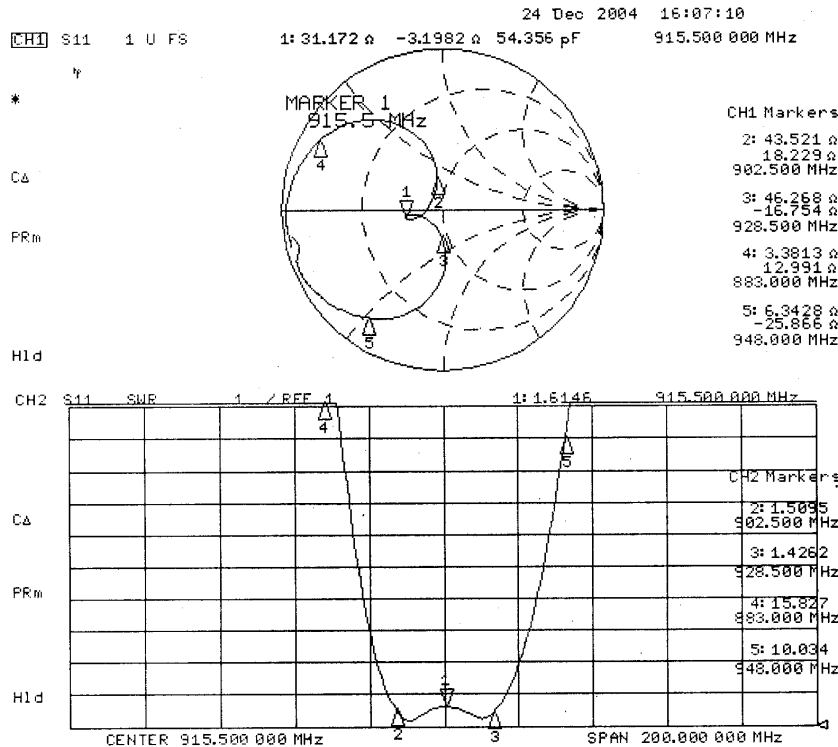
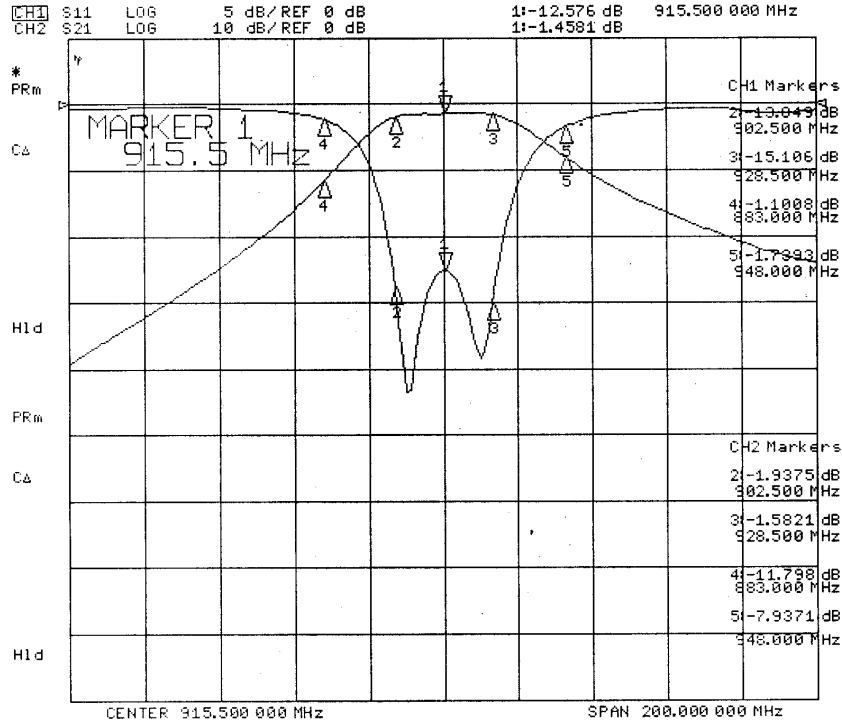


915 MHz Ceramic Bandpass Filter

Part Number: AM915B1134



Response Plots:





Response Plots:

