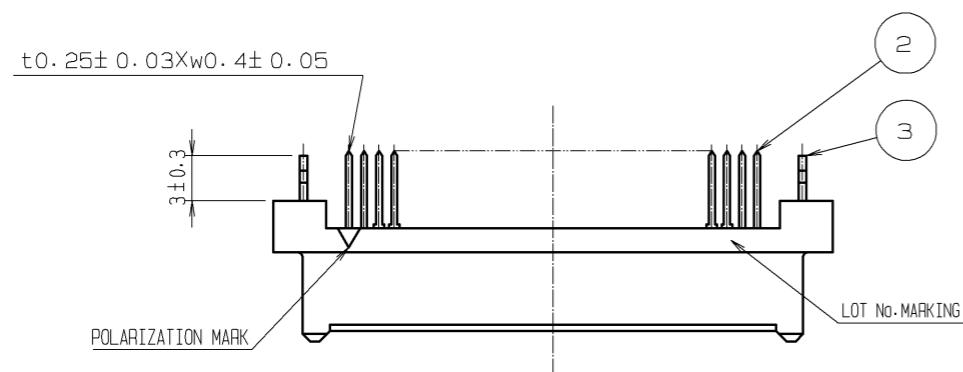
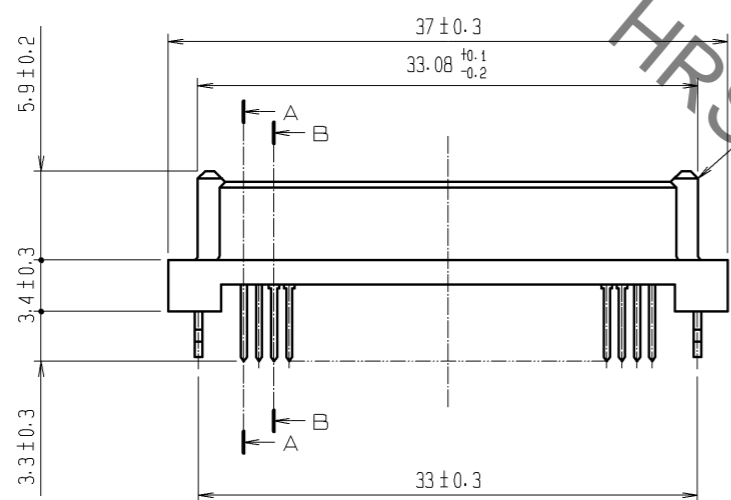
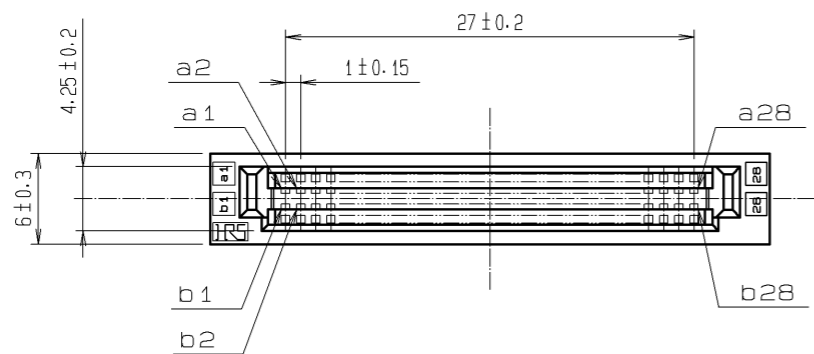
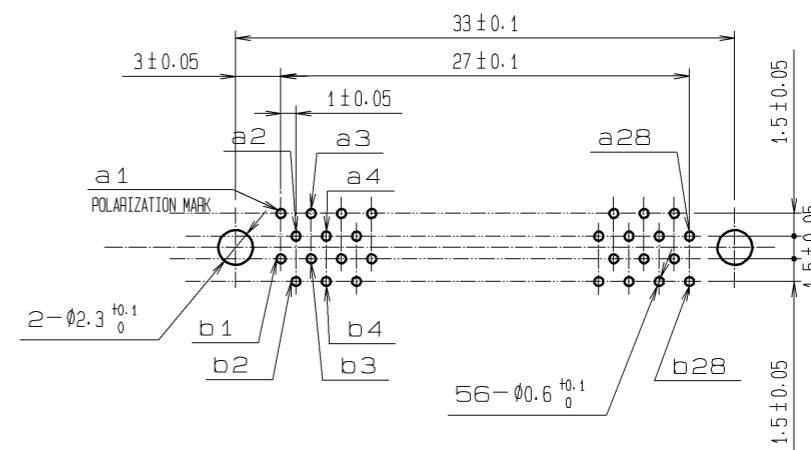


May.1.2023 Copyright 2023 HIROSE ELECTRIC CO., LTD. All Rights Reserved.
In case of consideration for using Automotive equipment / device which demand high reliability, kindly contact our sales window correspondents.



RECOMMENDED PC BOARD HOLE PATTERN (MOUNTING SIDE)
APPLICABLE BOARD THICKNESS: 1.6

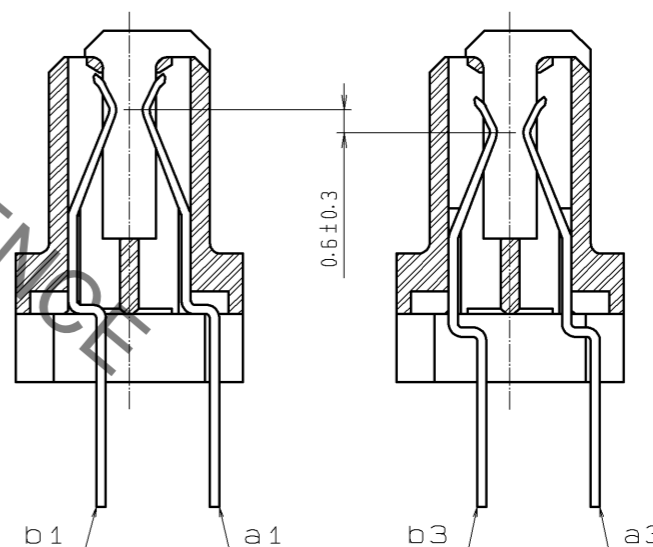


CONTACT SEQUENCE

| SEQUENCE | PIN NO. |
|----------|--------------------------------------|
| 1 | a1, a2, a27, a28 b1, b2, b27, b28 |
| 2 | a3~a26 b3~b26 |

A-A (5:1)

B-B (5:1)



| NO. | MATERIAL | FINISH | REMARKS | NO. | MATERIAL | FINISH | REMARKS |
|-----|-----------------|-------------|---------|-----|-----------------|--------|---|
| 3 | PHOSPHOR BRONZE | TIN-PLATING | | 2 | PHOSPHOR BRONZE | | CONTACT AREA : GOLD 0.1µm min. LEAD AREA : TIN-PLATING 1.2µm min. UNDER PLATING : NICKEL 1µm min. |
| 1 | POLYAMIDE | BEIGE | UL94V-0 | | | | |

| UNITS | SCALE | COUNT | DESCRIPTION OF REVISIONS | DESIGNED | CHECKED | DATE |
|-------|-------|-------|---|----------|---------|------|
| mm | 2:1 | △ | APPROVED : HS. OKAWA 08.07.14 CHECED : HT. YAMAGUCHI 08.07.14 DESIGNED : SY. KAMIGA 08.07.11 DRAWN : HK. SUNADORI 08.06.19 | | | |

| DRAWING NO. | PART NO. | CODE NO. |
|----------------|--------------------|-----------------|
| EDC3-151420-21 | FX5-56S2A-DSAL(71) | CL575-0127-5-71 |