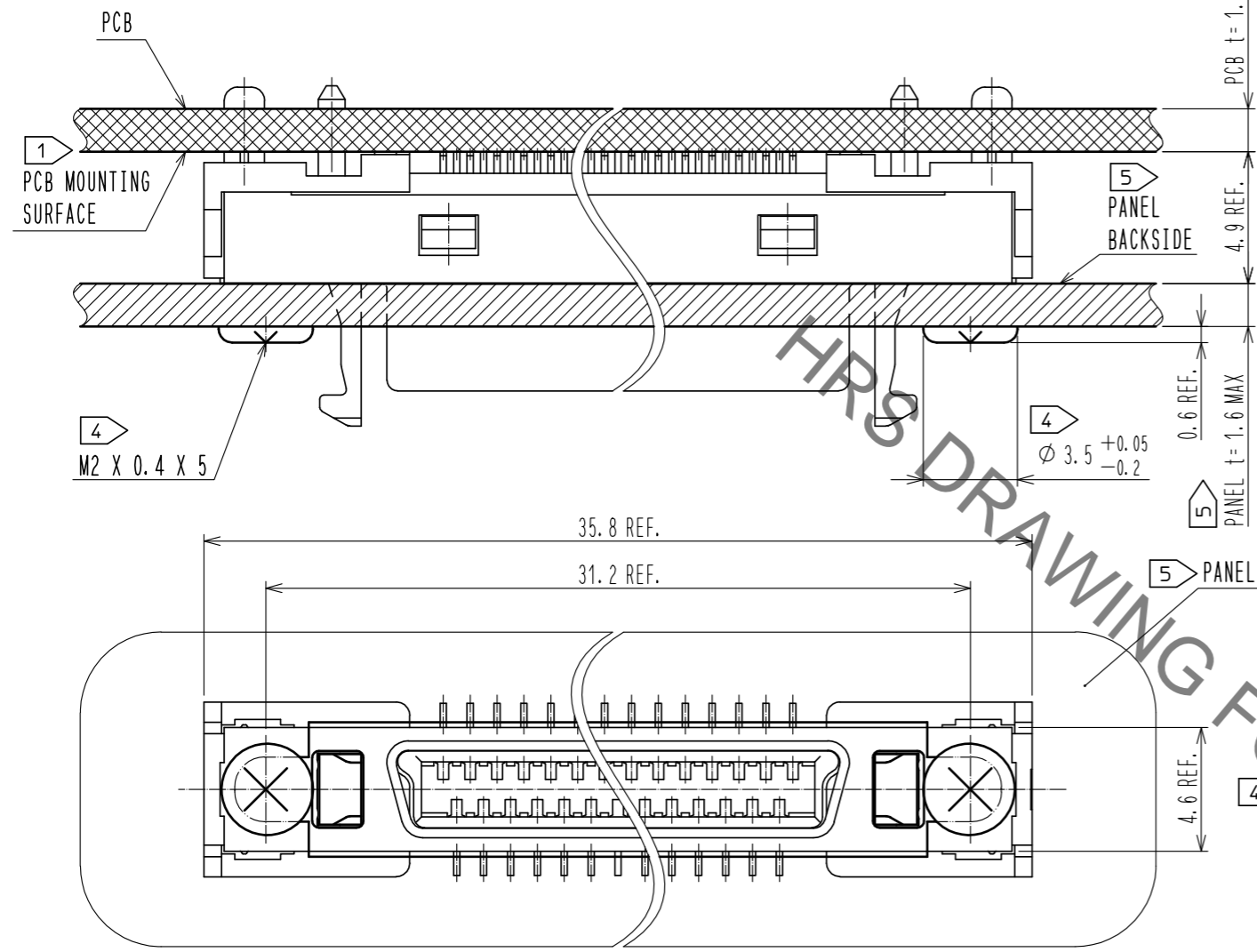
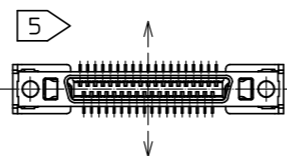
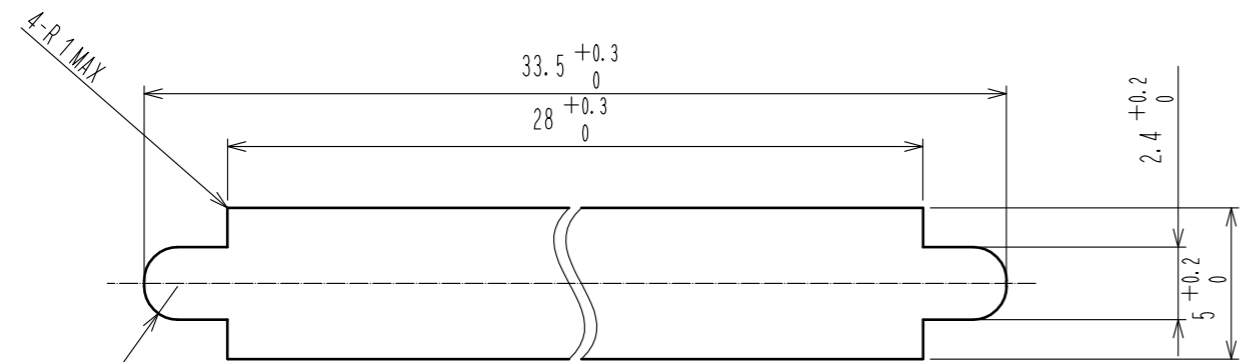


Apr.1.2023 Copyright 2023 HIROSE ELECTRIC CO., LTD. All Rights Reserved.
 In case of consideration for using Automotive equipment / device which demand high reliability, kindly contact our sales window correspondents.

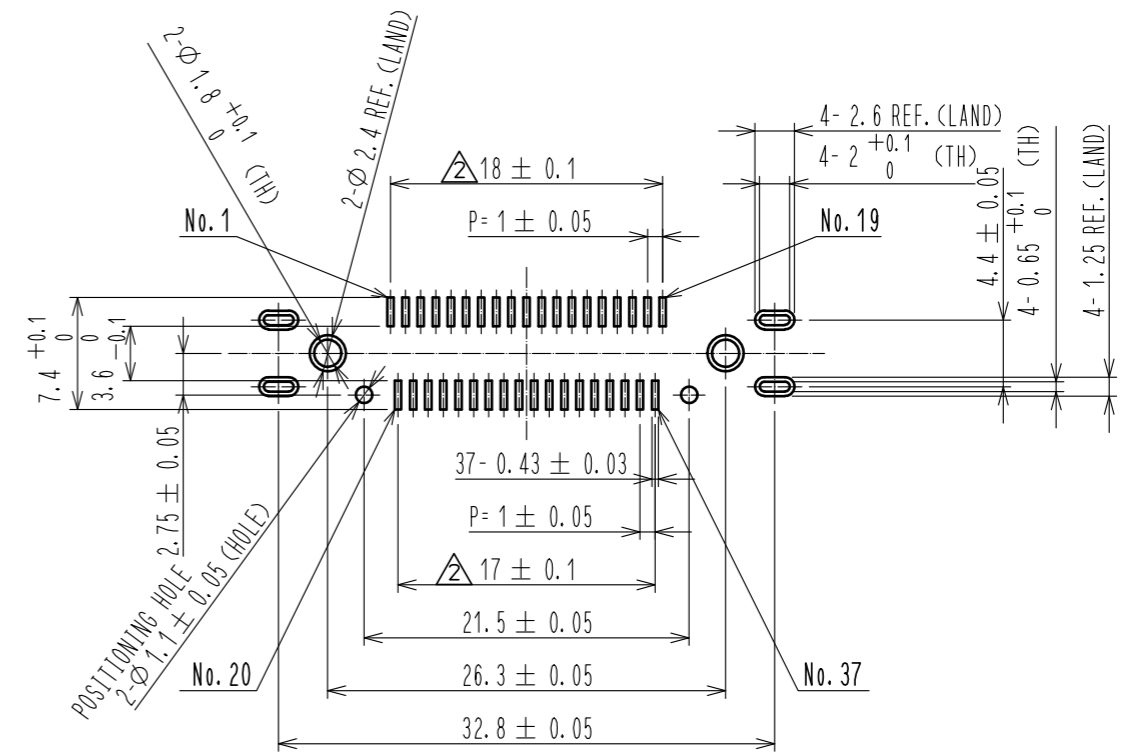
CONNECTR MOUNTED ON PCB
 (FOR EXAMPLE, PANEL THICKNESS IS 1.6mm)



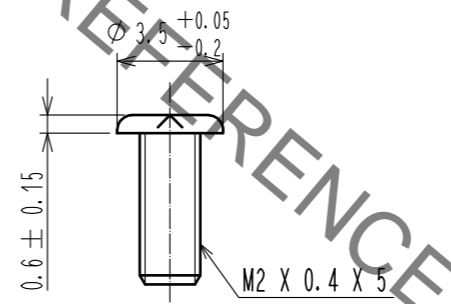
5 PANEL CUTOUT FOR REFERENCE



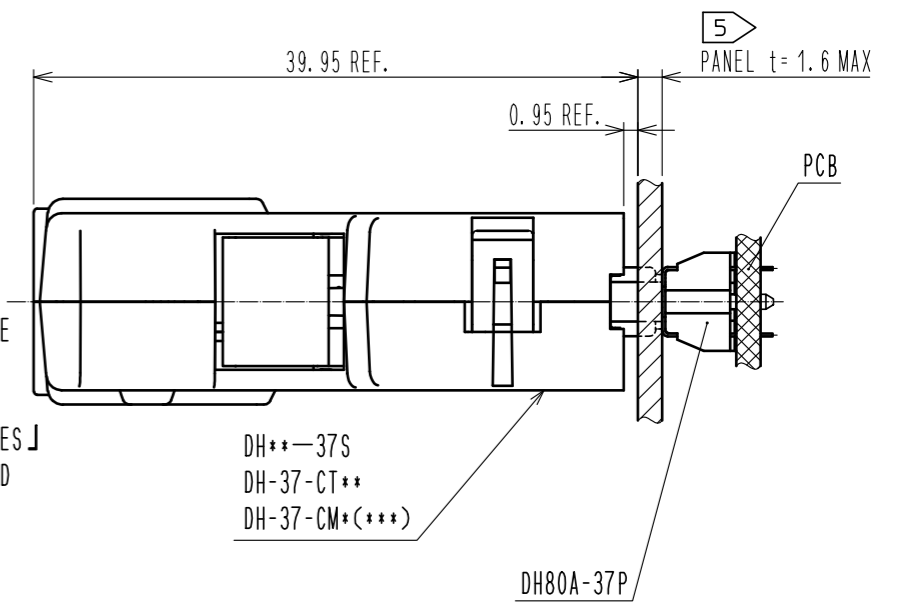
PCB LAYOUT FOR REFERENCE (MOUNTING SURFACE SIDE) (2:1)



4 SCREW FOR INSTALLATION



MATED (2:1)

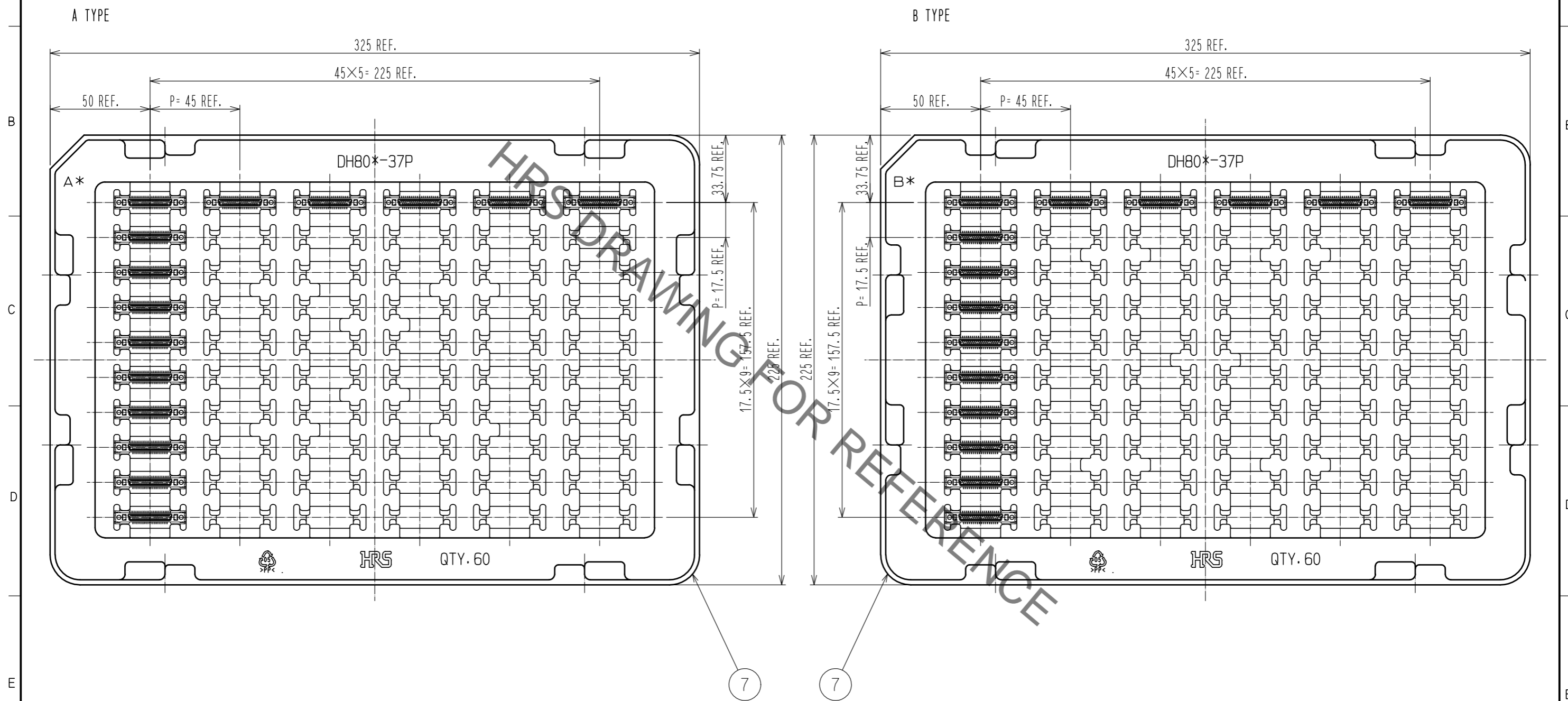


- NOTES**
- 4 INSTALLATION WITH THE PANEL MUST USE A DEDICATED SCREW.
 PURCHASE :NITTOSEIKO CO.,LTD.
 [FINE PAN HEAD MACHINE SCREW 2 TYPES]
 - 5 THIS PRODUCT WAS DESIGNED TO BE USED WITH FIXED ONTO A PANEL.
 IN THE CASE THE PLUG IS MATED UNDER UN-FIXED CONDITION AND ADDED STRONG LOAD ON INDICATED DIRECTION, IT HAS A RISK OF BEING PEELED OFF FROM PCB. THEN PLEASE TAKE CARE ON HANDLING WHEN YOU USE IT UNDER THE CONDITION BY FIXING IT ONTO HOUSING OR THE OTHER WAYS.
 PANEL SIZE SHOULD USE 1.6 MM MAX.

HRS	DRAWING NO.	EDC3-127954-00
	PART NO.	DH80A-37P
	CODE NO.	CLO244-0068-5-00
		2/4

Apr.1.2023 Copyright 2023 HIROSE ELECTRIC CO., LTD. All Rights Reserved.
In case of consideration for using Automotive equipment / device which demand high reliability, kindly contact our sales window correspondents.

DRAWING FOR PACKING (FREE)

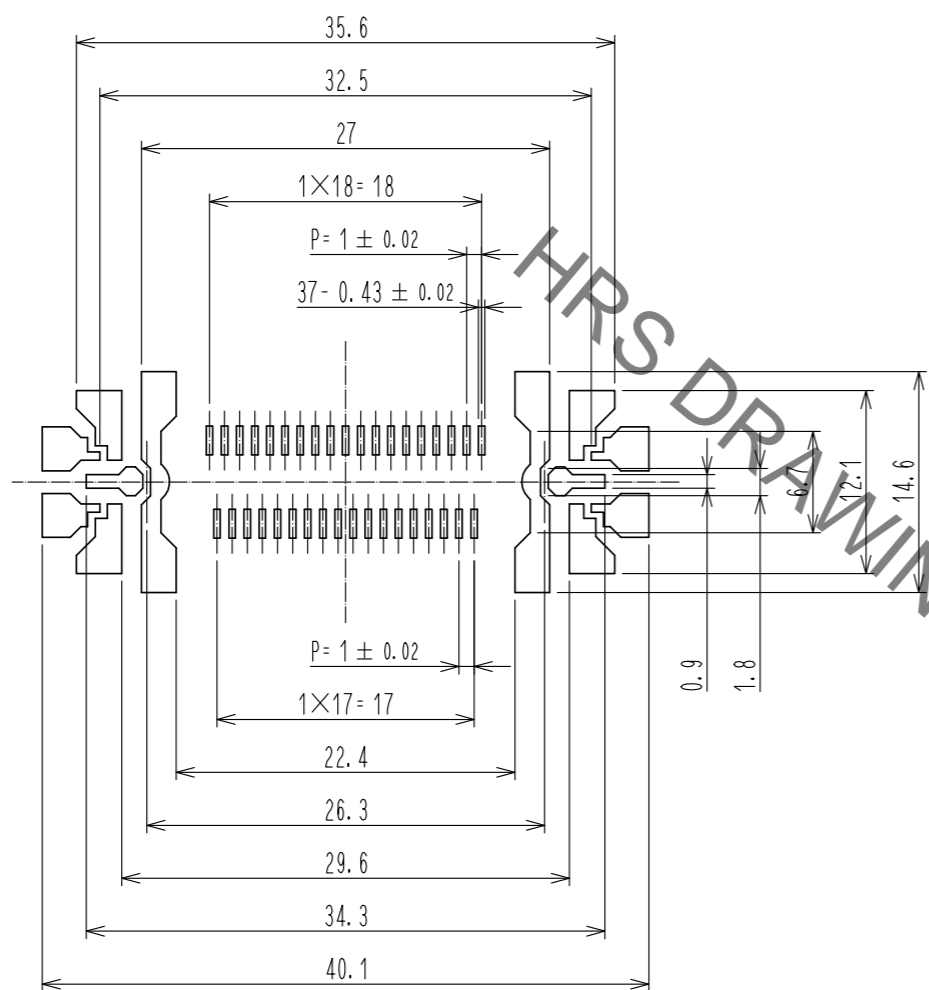


※TRAYS, A TYPE AND B TYPE, ARE PILED UP ALTERNATELY.

HRS	DRAWING NO.	EDC3-127954-00
	PART NO.	DH80A-37P
	CODE NO.	CL0244-0068-5-00
		3/4

Apr.1.2023 Copyright 2023 HIROSE ELECTRIC CO., LTD. All Rights Reserved.
In case of consideration for using Automotive equipment / device which demand high reliability, kindly contact our sales window correspondents.

REFERENCE METAL MASK LAYOUT(2:1)
(t=0.15)



GENERAL TOLERANCE IS ± 0.05

6. Metal mask dimensions of the drawings described, are reference dimensions for 0.15 mm thickness metal mask.
Change the metal mask dimensions by thickness of the metal mask, thickness of PCB, component of solder paste and mounting conditions.
Change the metal mask dimensions in case of mounting DH***P in parallel.
Change the metal mask dimensions, if there are other mounting parts or implementation pattern around the portion of mounting position of DH***P.

HRS	DRAWING NO.	EDC3-127954-00
	PART NO.	DH80A-37P
	CODE NO.	CL0244-0068-5-00
		4/4