

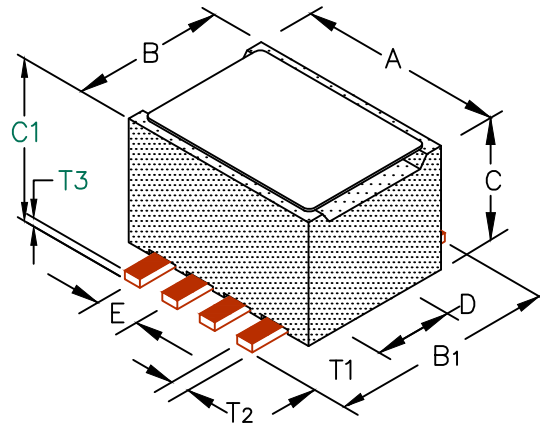
29F0418-0SR-10

PHYSICAL DIMENSIONS:

A	6.10 [.240]	± 0.13 [.005]
B	4.50 [.177]	+ 0.08 [.003] - 0.10 [.004]
B1	7.04 [.277]	± MAX
C	2.92 [.115]	± 0.08 [.003]
C1	3.56 [.140]	± MAX
D	2.24 [.088]	± 0.08 [.003]
E	1.27 [.050]	± 0.13 [.005]

WIRE DIMENSIONS:

T1	2.16 [.085]	± 0.25 [.010]
T2	0.50 [.020]	± TYP.
T3	0.25 [.010]	± TYP.



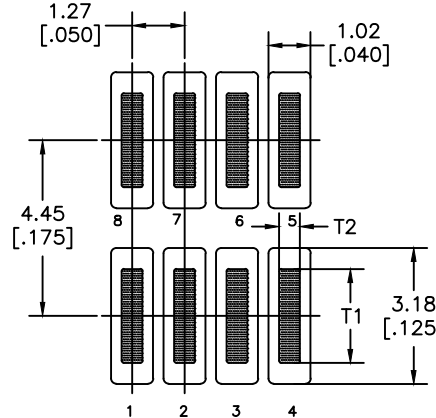
ELECTRICAL CHARACTERISTICS:			
	Z @ 100MHz (Ω)	DCR (Ω)	Rated Current
Nominal	83		
Minimum	63		
Maximum	104	0.01	6,000 mA

NOTES: UNLESS OTHERWISE SPECIFIED

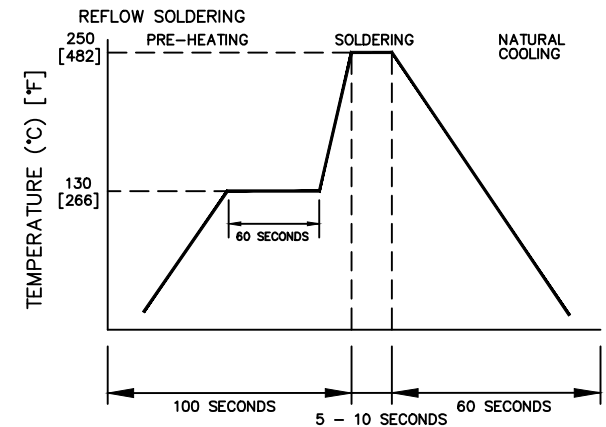
1. TAPED AND REELED per CURRENT EIA SPECIFICATIONS, 13" REELS, 900 PCS/REEL.
2. COMPONENTS SHOULD BE ADEQUATELY PREHEATED BEFORE SOLDERING.
3. REF. CARRIER TAPE SPECIFICATION
4. TERMINATION FINISH IS 100% TIN. # CART418-03.
5. OPERATION TEMPERATURE (INCLUDING SELF-HEATING): -40 ~ +125°C.

RoHS

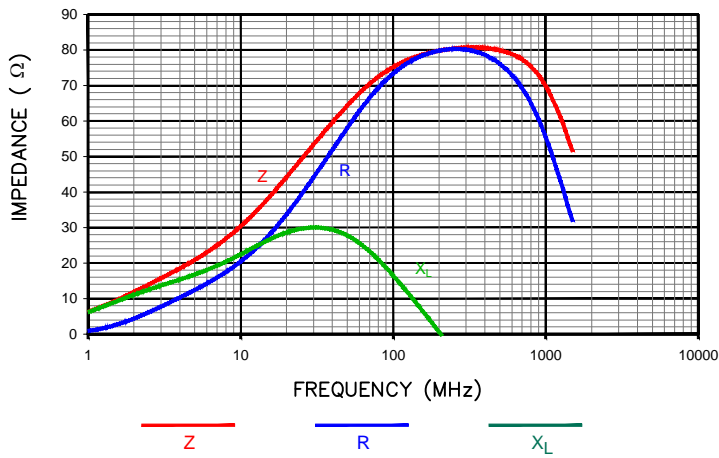
LAND PATTERNS FOR REFLOW SOLDERING



RECOMMENDED SOLDERING CONDITIONS

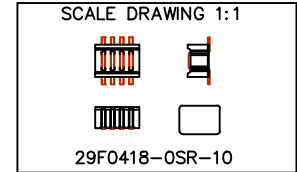
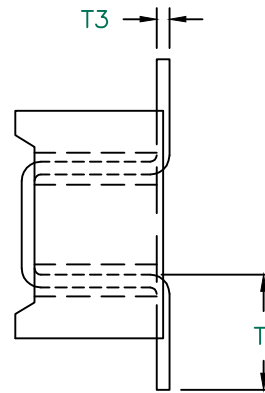
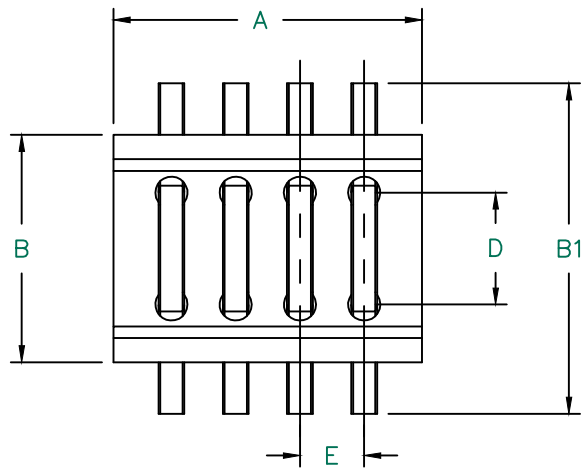


|Z|, R, AND X vs. FREQUENCY



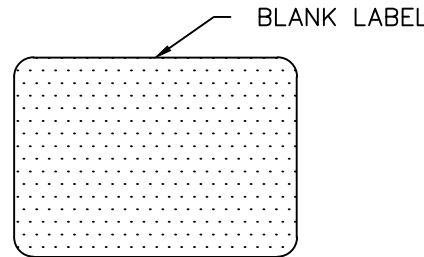
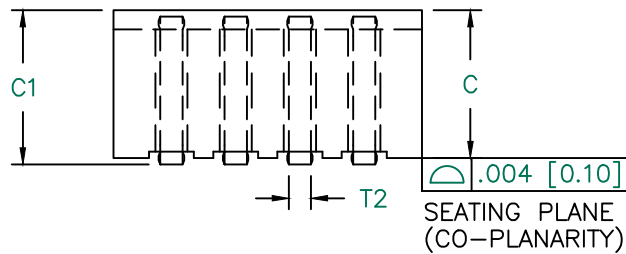
DIMENSIONS ARE IN mm (INCHES).				This print is the property of Laird Tech. and is loaned in confidence subject to return upon request and with the understanding that no copies shall be made without the written consent of Laird Tech. All rights to design or invention are reserved.			
F	UPDATE COMPANY LOGO	04/27/15	QIU	PROJECT/PART NUMBER: 29F0418-0SR-10	REV	PART TYPE:	DRAWN BY:
E	ADD RATED VOLTAGE AND NOTE 5	08/30/12	QIU		F	ASSEMBLY	JRK
D	UPDATE COMPANY LOGO	10/21/08	JRK		DATE: 04/30/04	SCALE: NTS	SHEET:
C	UPDATE COMPANY LOGO	05/01/07	JRK		CAD #	TOOL #	1 of 2
B	CORRECT T3 IN LANDPATTERN ADD ROHS CHANGE TOLS ON E DIMENSION	03/19/07	JRK		DATE: 04/30/04	SCALE: NTS	SHEET:
A	ORIGINAL DRAFT	04/30/04	JRK	CAD #	TOOL #	1 of 2	
REV	DESCRIPTION	DATE	INT	29F0418-0SR-10-F-1			

Laird



ELECTRICAL TESTING

TEST:	GROSS	GROSS
# TURNS	1	1
AWG	22	22
FREQUENCY	25 MHz	100 MHz
NOMINAL	50 Ω	83 Ω
MINIMUM	- Ω	63 Ω
MAXIMUM	63 Ω	104 Ω
WEIGHT/1000	0.32 kgs.	0.71 lbs.



DIMENSIONS:

A	6.10 [.240]	±	0.13 [.005]
B	4.50 [.177]	+	0.08 [.003]
		-	0.10 [.004]
B1	7.04 [.277]	±	MAX
C	2.92 [.115]	±	0.08 [.003]
C1	3.56 [.140]	±	MAX
D	2.24 [.088]	±	0.08 [.003]
E	1.27 [.050]	±	0.13 [.005]

WIRE DIMENSIONS:

T ₁	2.16 [.085]	±	0.25 [.010]
T ₂	0.50 [.020]	±	TYP.
T ₃	0.25 [.010]	±	TYP.

NOTES: UNLESS OTHERWISE SPECIFIED

1. WIRE: REFERENCE STEWARD WIRE PURCHASE SPEC. W0818-0.
2. IMPEDANCE VALUES ARE GROSS, MEASURED USING W0818-0 WIRE PLACED IN END HOLE w/ NO D.C. BIAS.
3. REFERENCE STEWARD CORE P/N 29H0418-*00.
4. NO MORE THAN 0.18 [.007] DIFFERENCE FROM THE LONGEST TO THE SHORTEST CONDUCTOR ON ONE SIDE.
5. TERMINATION FINISH IS 100% TIN.



DIMENSIONS ARE IN mm (INCHES).				This print is the property of Laird Tech. and is loaned in confidence subject to return upon request and with the understanding that no copies shall be made without the written consent of Laird Tech. All rights to design or invention are reserved.		Laird	
F	UPDATE COMPANY LOGO	04/27/15	QIU	REV	PART TYPE:	DRAWN BY:	
E	ADD RATED VOLTAGE AND NOTE 5	08/30/12	QIU	F	ASSEMBLY	JRK	
D	UPDATE COMPANY LOGO	10/21/08	JRK	PROJECT/PART NUMBER:		29F0418-0SR-10	
C	UPDATE COMPANY LOGO	05/01/07	JRK	DATE:	04/30/04	SCALE:	NTS
B	CORRECT T3 IN LANDPATTERN ADD ROHS CHANGE TOLS ON E DIMENSION	03/19/07	JRK	CAD #	29F0418-0SR-10-F-2	SHEET:	2 of 2
A	ORIGINAL DRAFT	04/30/04	JRK	TOOL #	-		
REV	DESCRIPTION	DATE	INT				