

NCP1034 Buck Converter Evaluation Board User's Manual



ON Semiconductor®

www.onsemi.com

EVAL BOARD USER'S MANUAL

Table 1. GENERAL PARAMETERS

Device	Input Voltage	Output Voltage	Output Current	Voltage Ripple	Topology	I/O Isolation
NCP1034	48 V ±20%	5 V	5 A	< 30 mV	Buck	None

Description

This evaluation board user's manual describes high voltage, high power and high efficiency DC/DC buck converter featuring the NCP1034.

The NCP1034 is voltage mode PWM controller for a high voltage synchronous buck. The controller drives two external N-MOSFETs with programmable frequency up to 500 kHz for wide applications range. The IC is able to be synchronized by external signal or is able to synchronize other ICs that simplify design of system level filter. The output voltage can be set as low as 1.25 V. Besides system and drivers UVLO there is an external UVLO that can be set to user value. Over current protection uses low side MOSFET $R_{DS(ON)}$ as sensing resistor, which has no impact on efficiency. Current limit protection uses a hiccup mode. These protections provide application additional security level.

Key Features

- High Input Voltage
- High Operation Frequency
- High Efficiency
- Low Output Voltage Ripple
- Ceramic Capacitors Only
- Over-current Protection
- Under-voltage Protection
- Start to Pre-biased Output
- Small Size

Connection Diagram

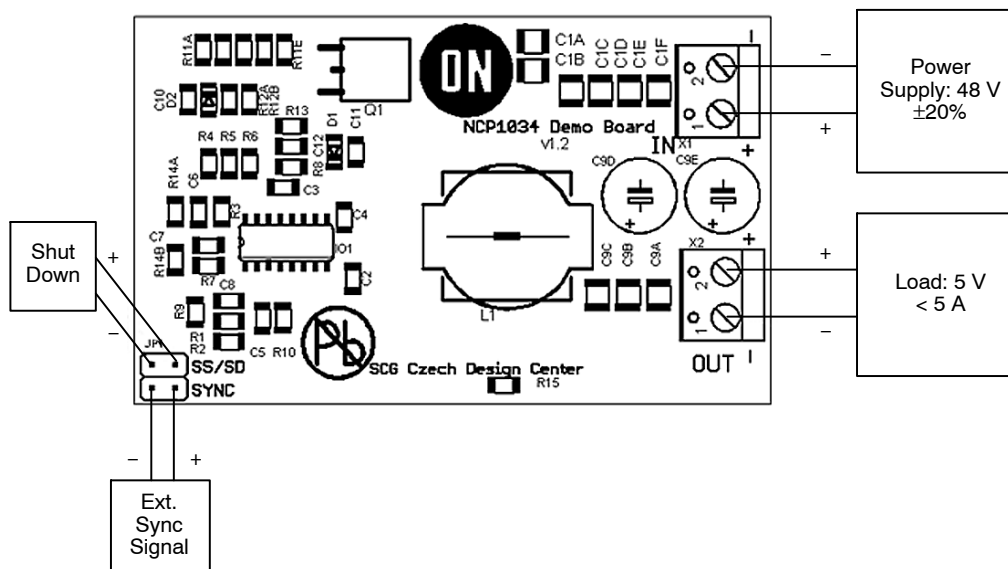


Figure 1. Connection Diagram

Schematic

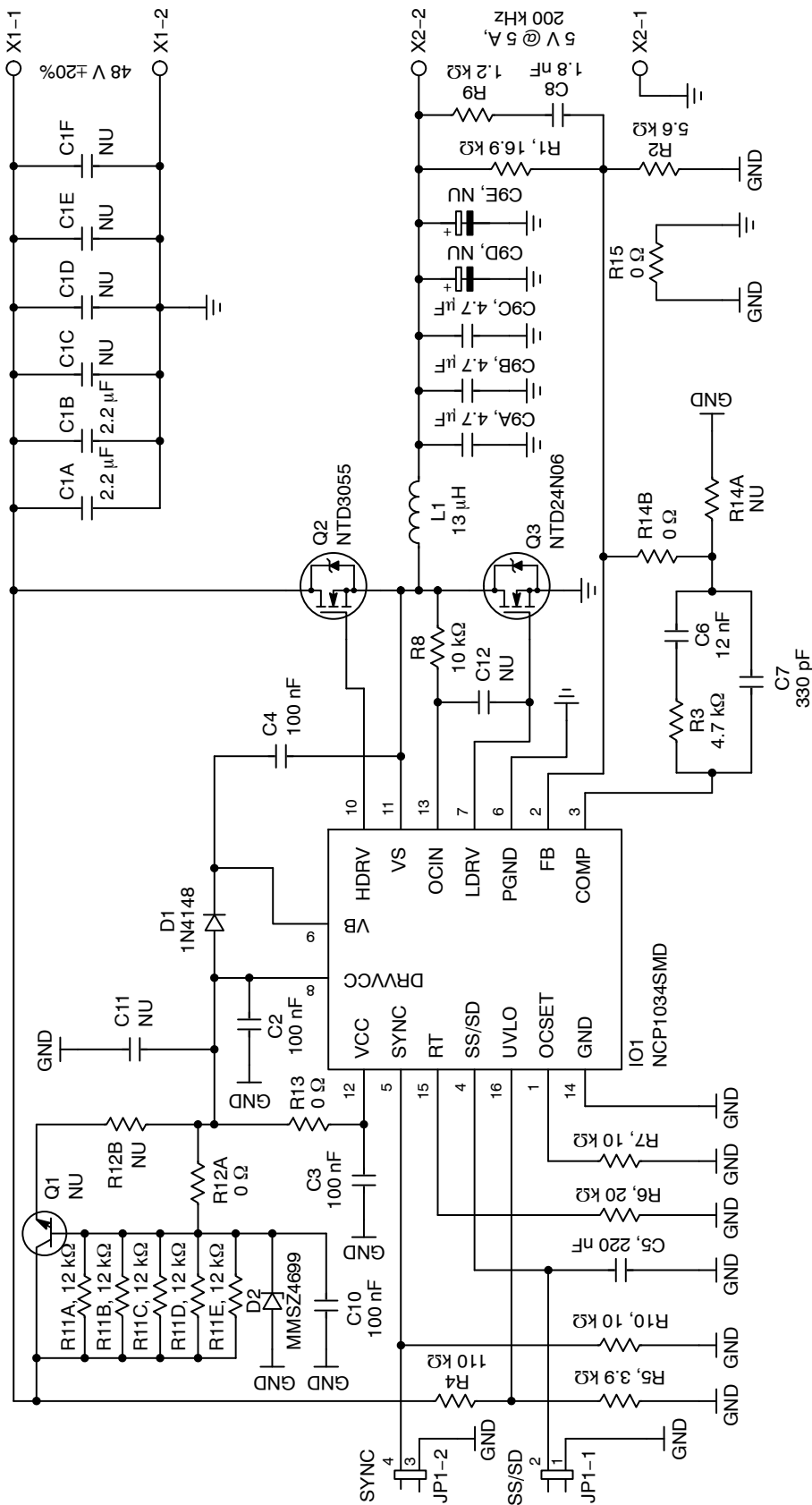


Figure 2. Schematic of the NCP1034 Demo Board

The demo board was designed as board with many options. There is linear regulator for powering the IC only with Zener diode or with high voltage transistor (R12A and R12B selected one of these regulators), compensation circuit of second or third type (R14A and R14B), ceramic or electrolytic output capacitors (C9A–C9E) and various input capacity (C1A–C1F). For additional filtering there are R13 and C11 which is not currently used. There are two headers pins for easy connection to external synchronization pulse source or to direct connection to the other NCP1034 demo board and the SS/SD pin that can be used to shut down the controller by connecting it to the ground.

Circuit Layout

Circuit is designed on two layer FR4 board with 72 μm copper cladding. Except connectors all components are

surface mounted types and almost all of them are on the top layer. On the bottom side there are power MOSFETs because it can be easy put on cooler (if demo board is used on prescribed operations conditions and at room temperature it is not needed).

Some components must be placed very carefully. Blocking capacitors C2, C3 and bootstrap capacitor C4 have to be placed close to the IC. Low side MOSFET’s source have to be connected to the IC’s power ground with minimum resistance and inductance of connection so two layers connection between them is needed. Feedback and compensation network should be near the IC to minimize noise on them. Using signal and power ground connected in one point near the output connector improves load regulation. Inductor and output capacitors are placed close to the MOSFETs and output connector.

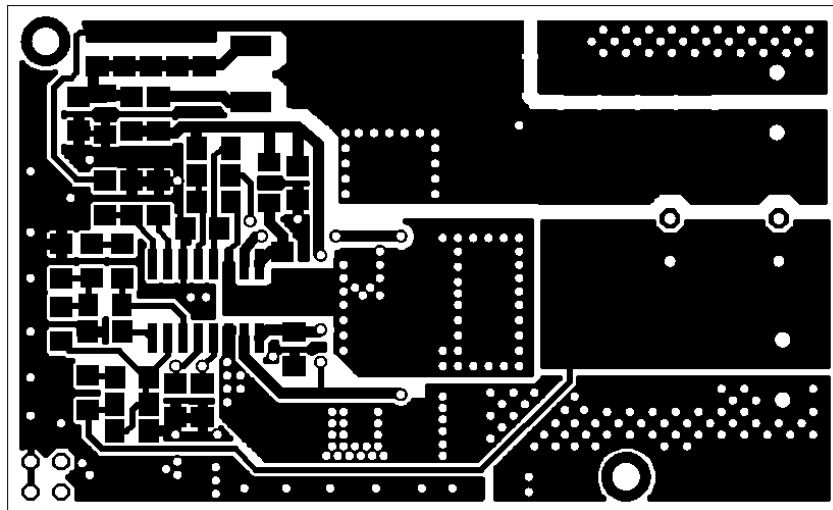


Figure 3. Top Layer

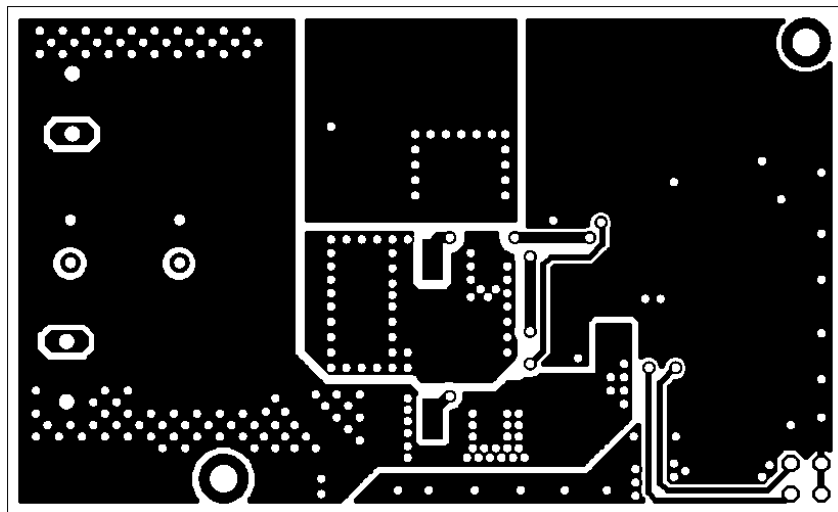


Figure 4. Bottom Layer

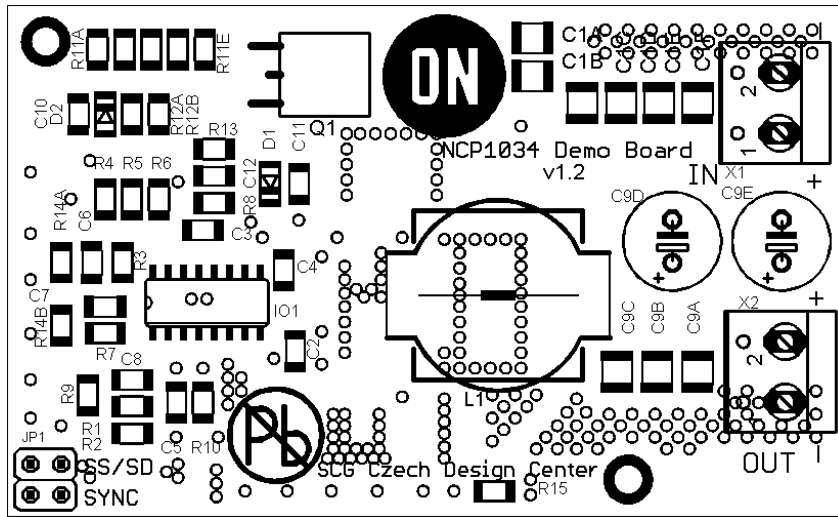


Figure 5. Top Side Components

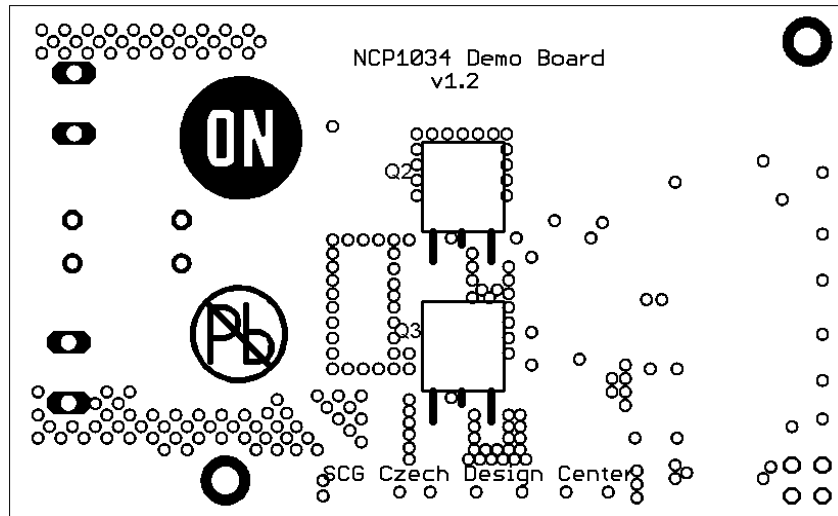


Figure 6. Bottom Side Components

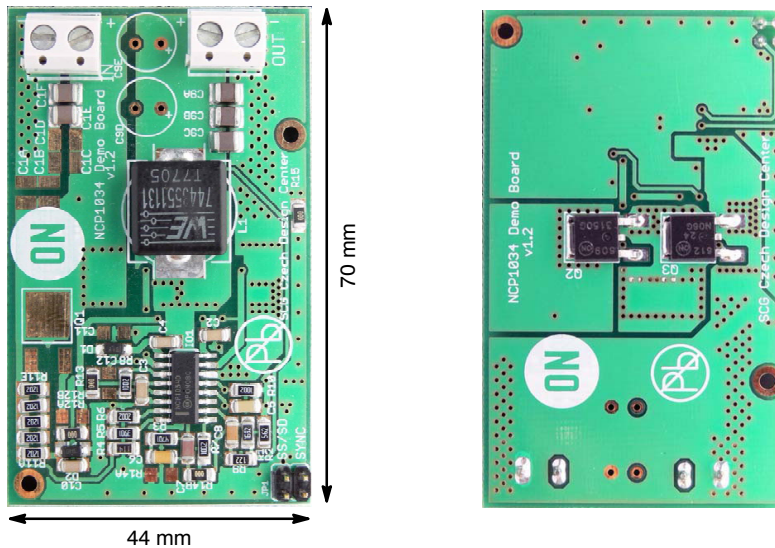


Figure 7. Demo Board Photos

Measurement

Table 2. OUTPUT PARAMETERS

Characteristic	Typ	Unit
Output Voltage	5.02	V
Maximum Output Current	5	A
Oscillator Frequency	200	kHz
Output Voltage Ripple $I_{OUT} = 0.1\text{ A}$ $I_{OUT} = 5\text{ A}$	16.5 20.5	mV _{pk-pk}
Load Regulation $I_{OUT} = 0\text{--}5\text{ A}, V_{IN} = 48\text{ A}$	-0.34	mV/A
Line Regulation $V_{IN} = 38\text{--}58\text{ A}$ $I_{OUT} = 0.1\text{ A}$ $I_{OUT} = 5\text{ A}$	0.004 0.011	%

Start Up Sequence

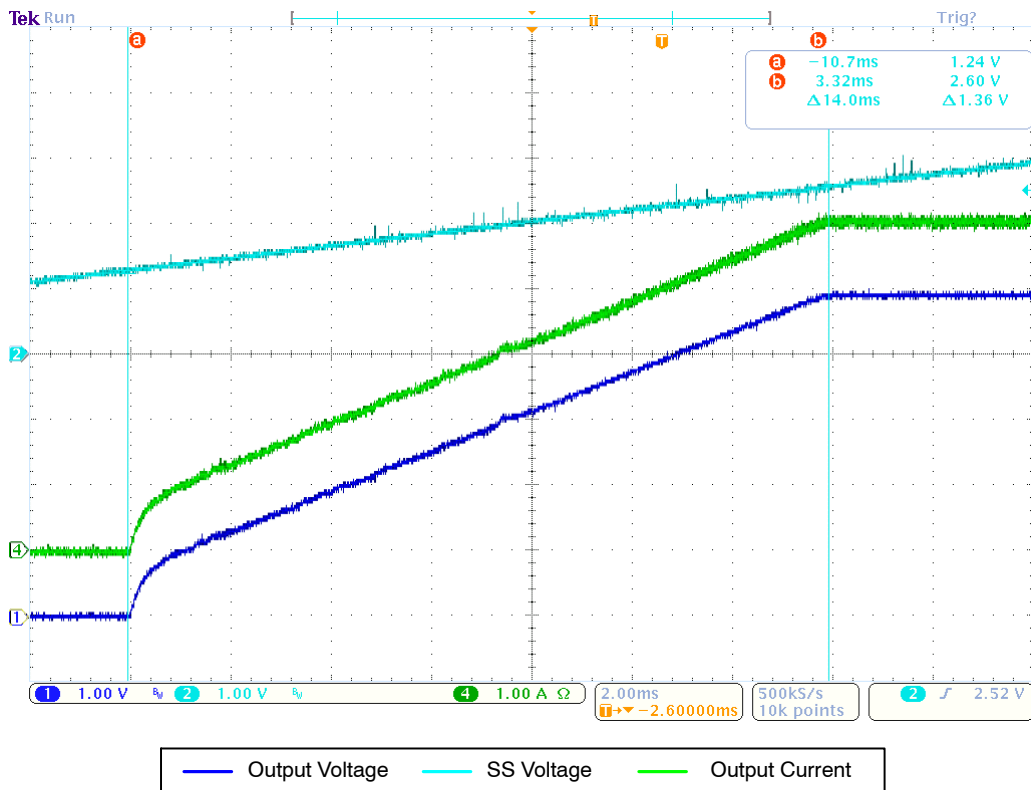


Figure 8. Start to Nominal Load

EVBUM2356/D

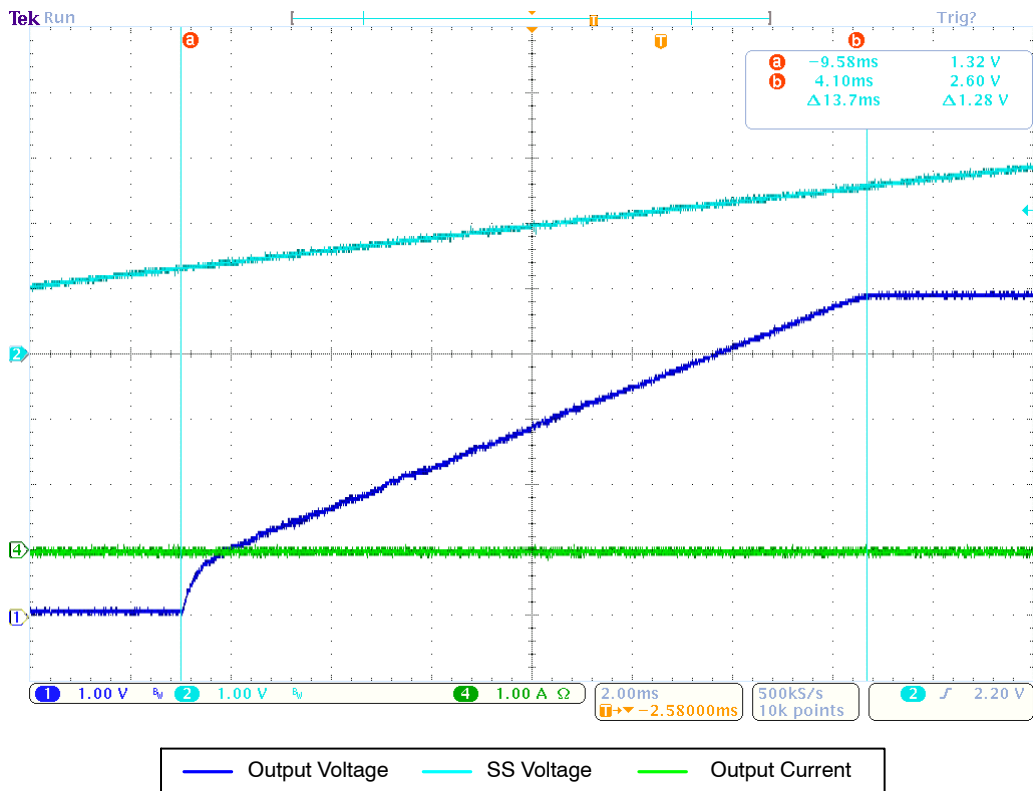


Figure 9. Start to Light Load

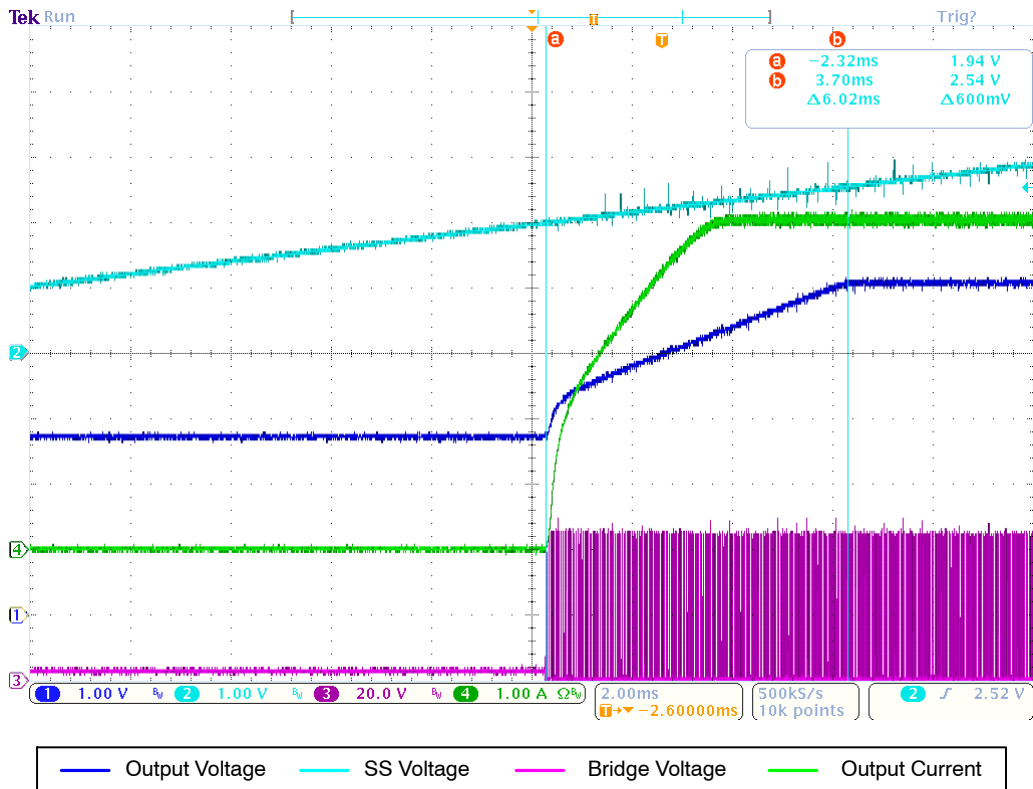


Figure 10. Start to Pre-Biased Output

Over-Current Protection

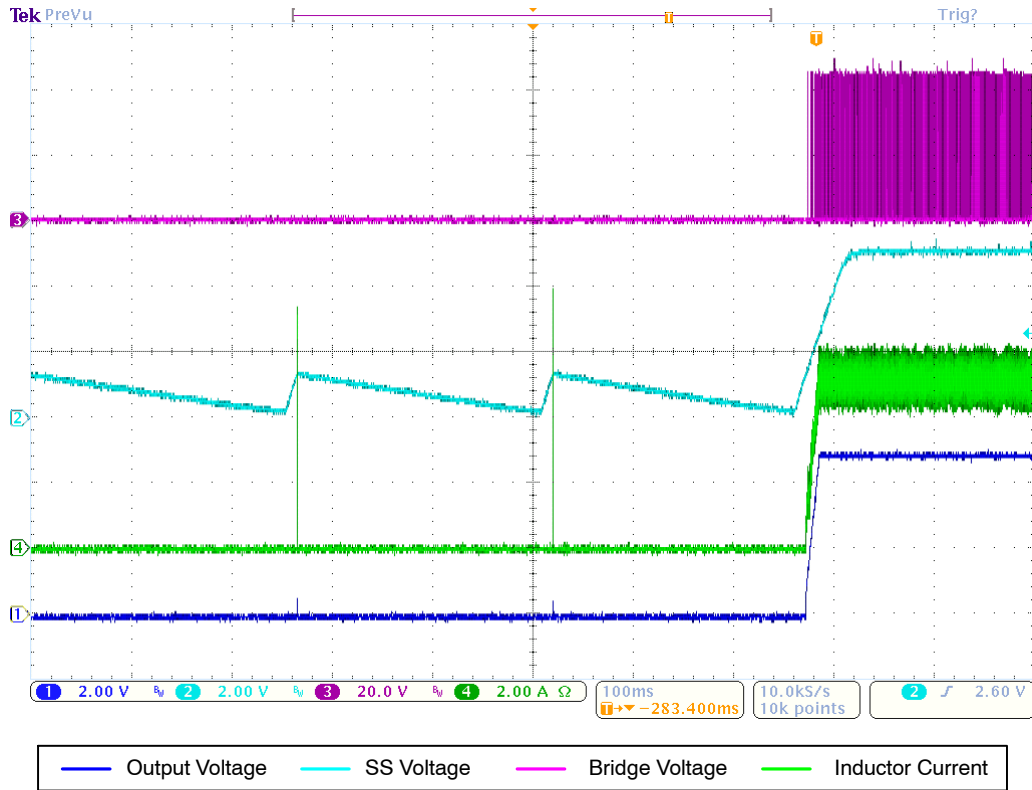


Figure 11. Shorted Output and Release

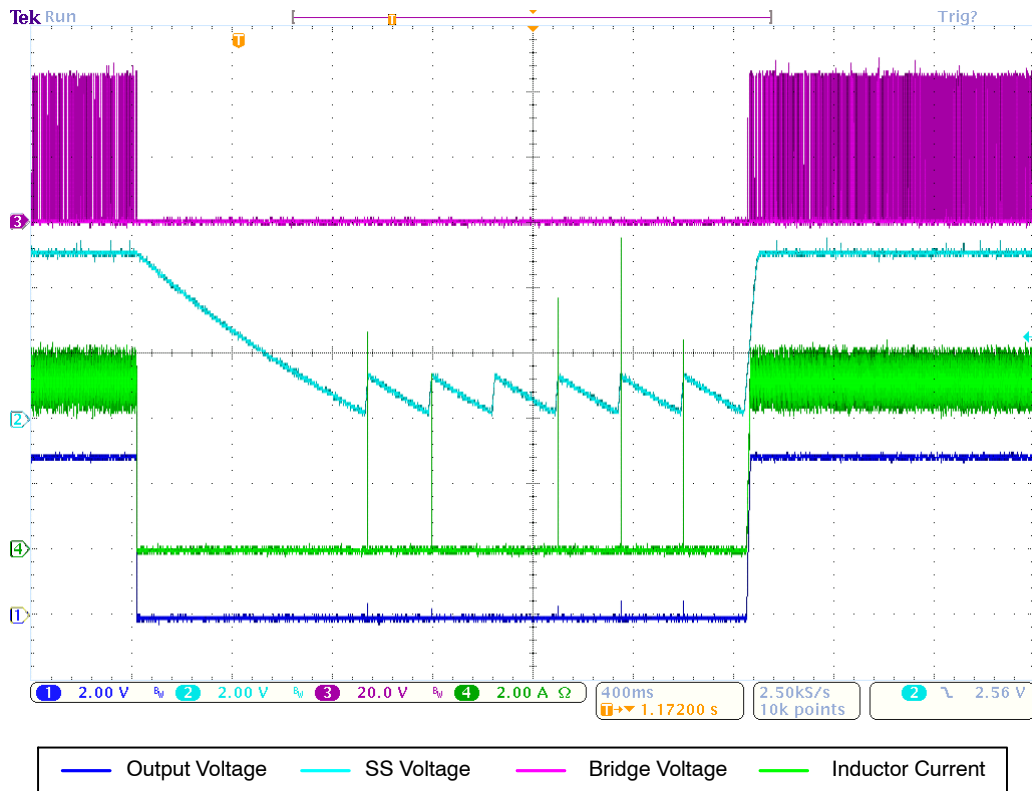


Figure 12. Overload from Nominal Load and Released

EVBUM2356/D

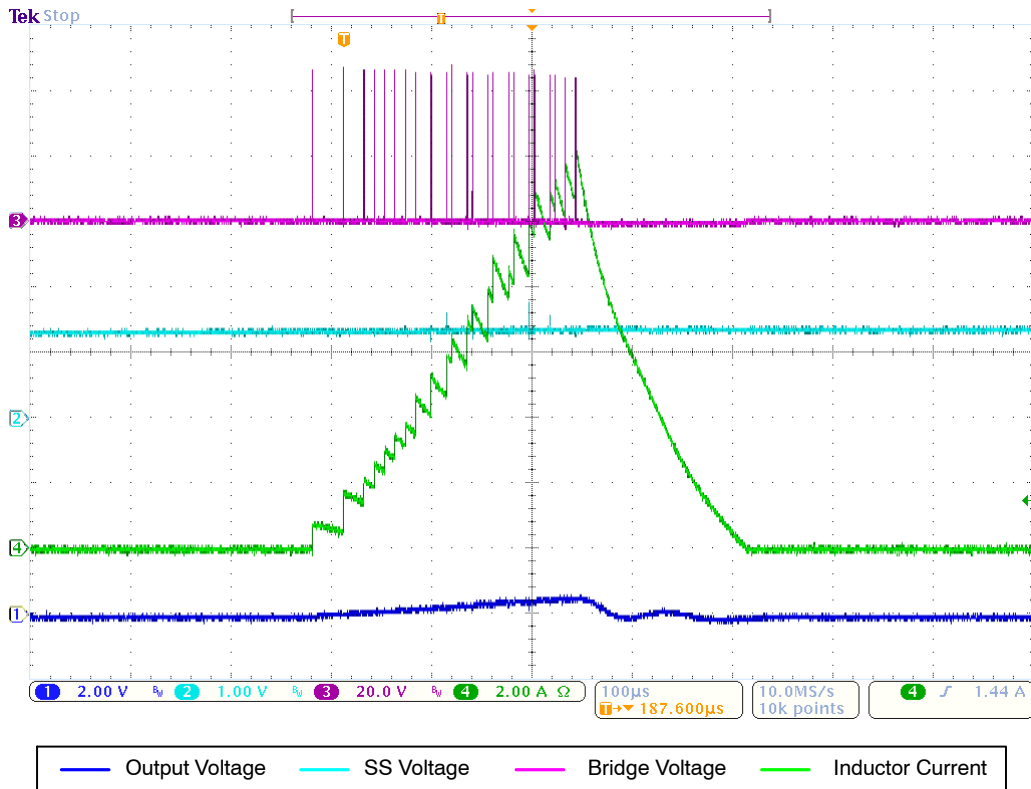


Figure 13. Hiccup Pulse Detail

Shutdown

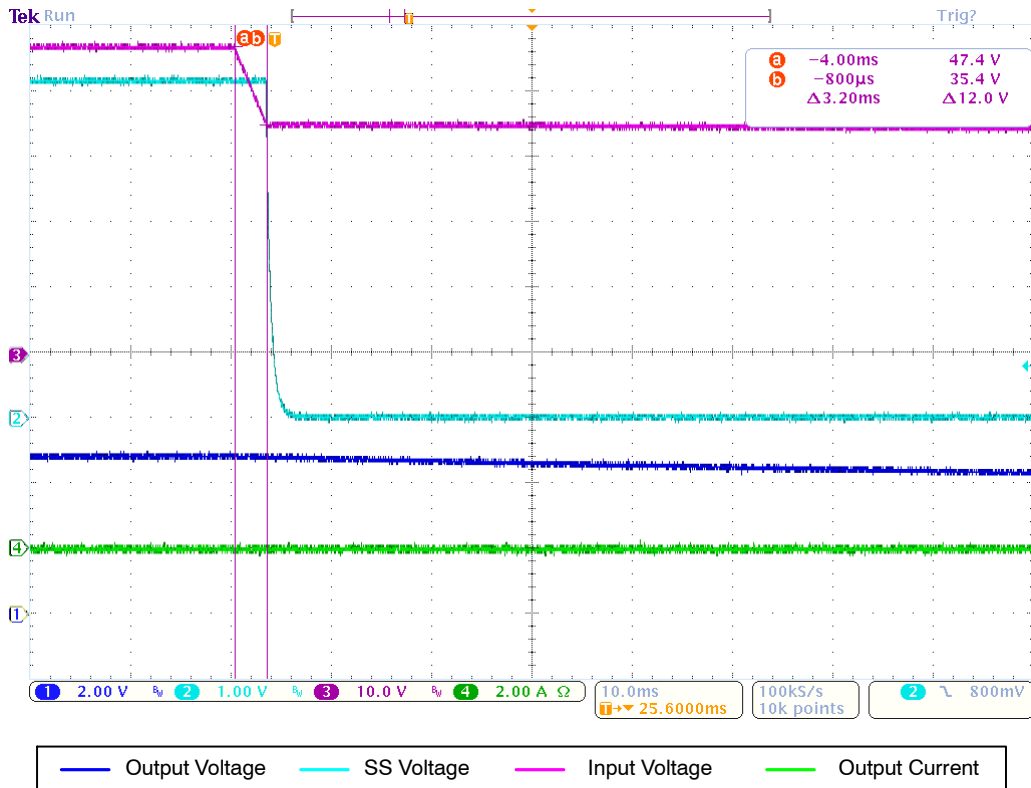


Figure 14. Switch Off Input Voltage to Light Load

EVBUM2356/D

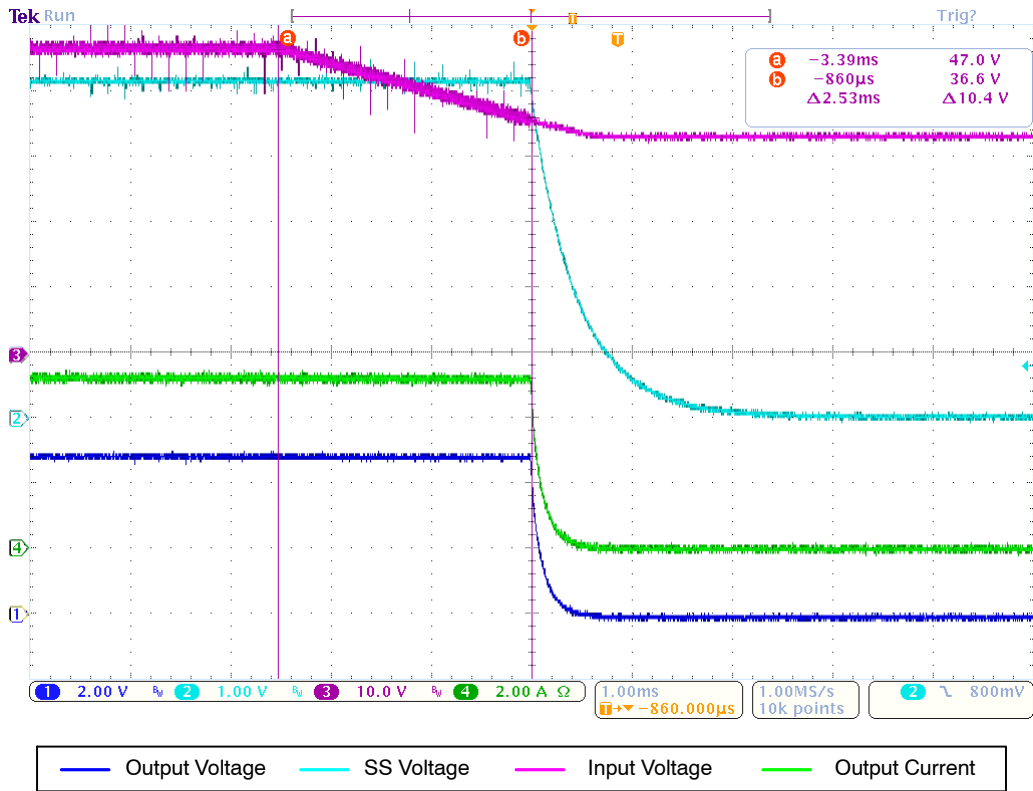


Figure 15. Switch Off Input Voltage to Nominal Load

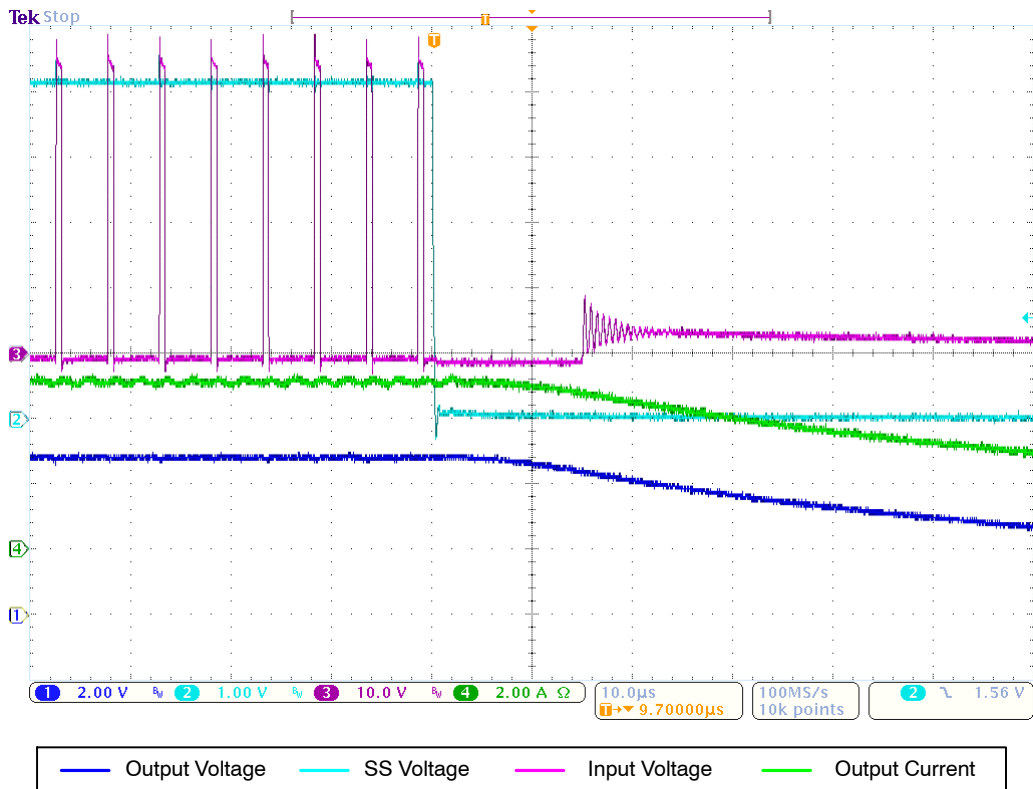


Figure 16. Shut Down through SS/SD Pin

Step Response and Output Voltage Ripple

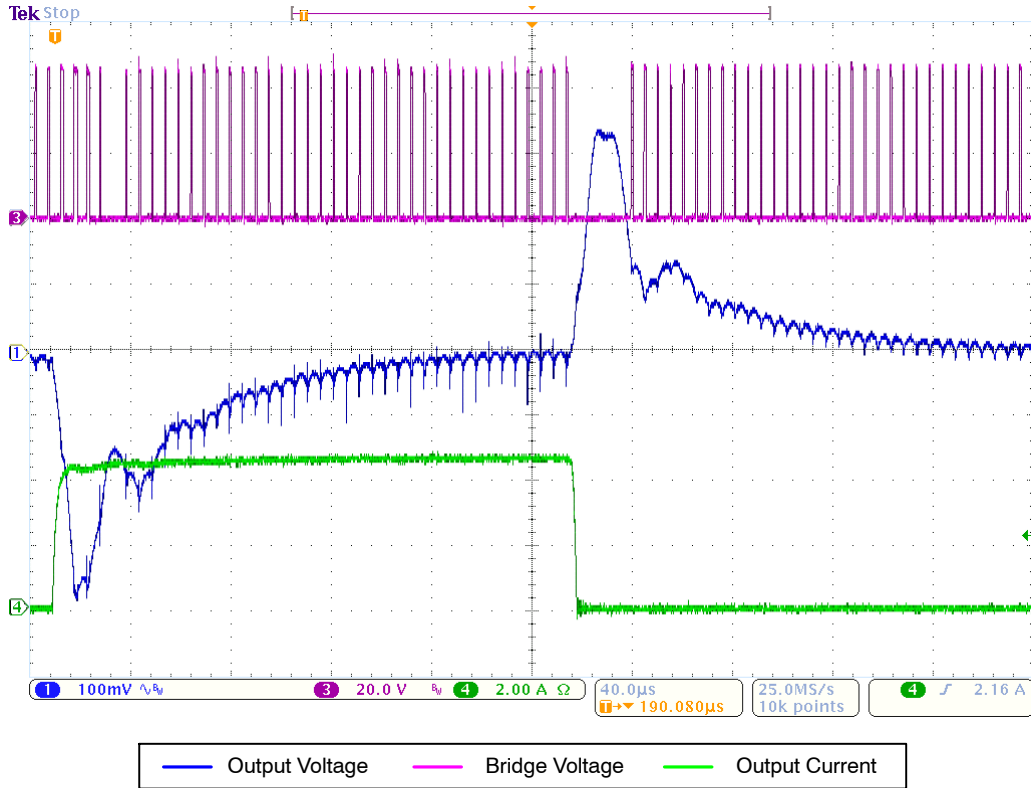


Figure 17. Load Step Response

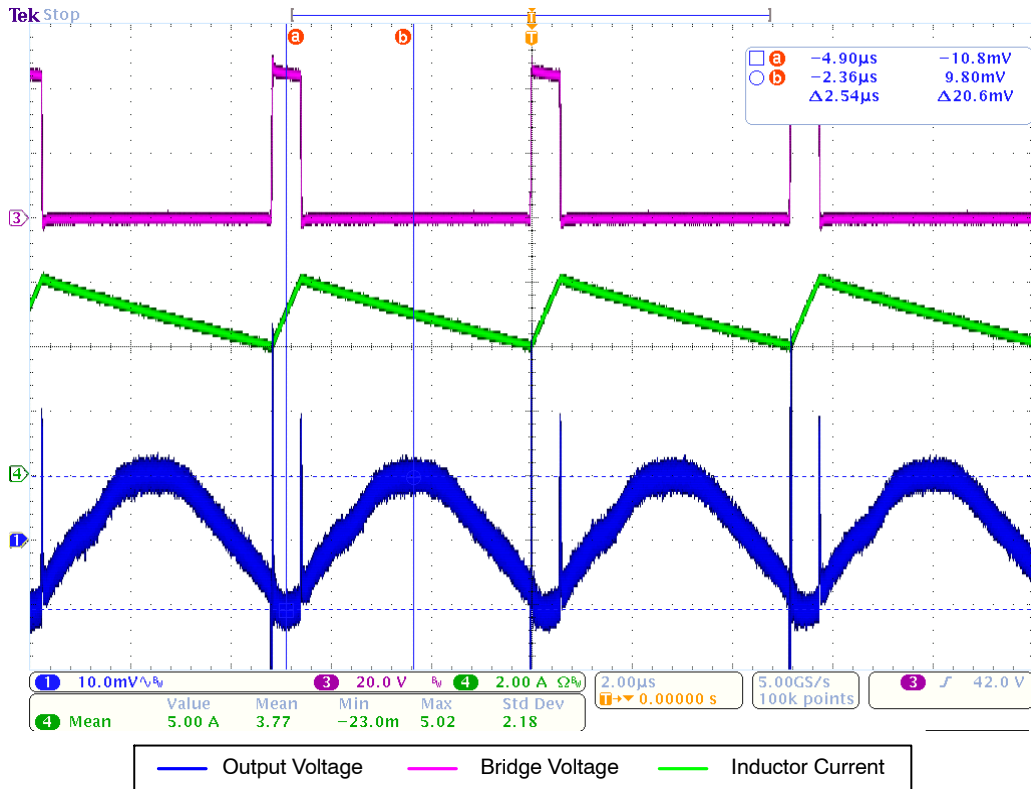


Figure 18. Output Voltage Ripple $I_{OUT} = 5 A$

EVBUM2356/D

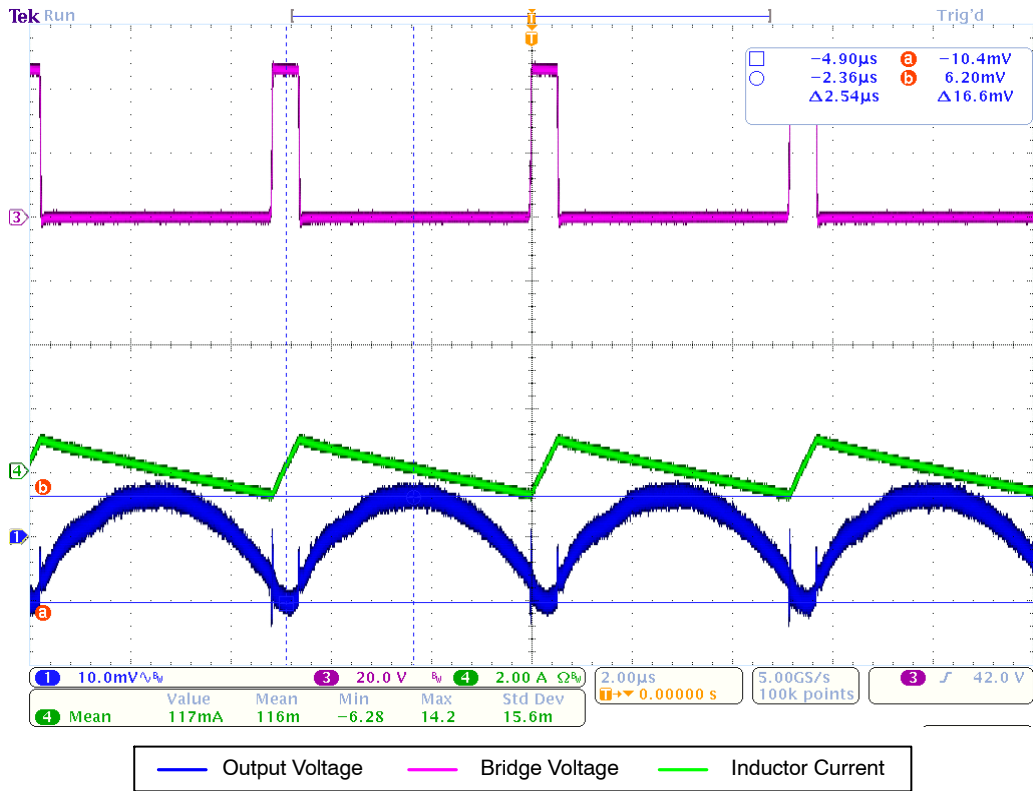


Figure 19. Output Voltage Ripple $I_{OUT} = 0.1 \text{ A}$

Synchronization

Two independent boards connected (or not) via Sync pin and ground.

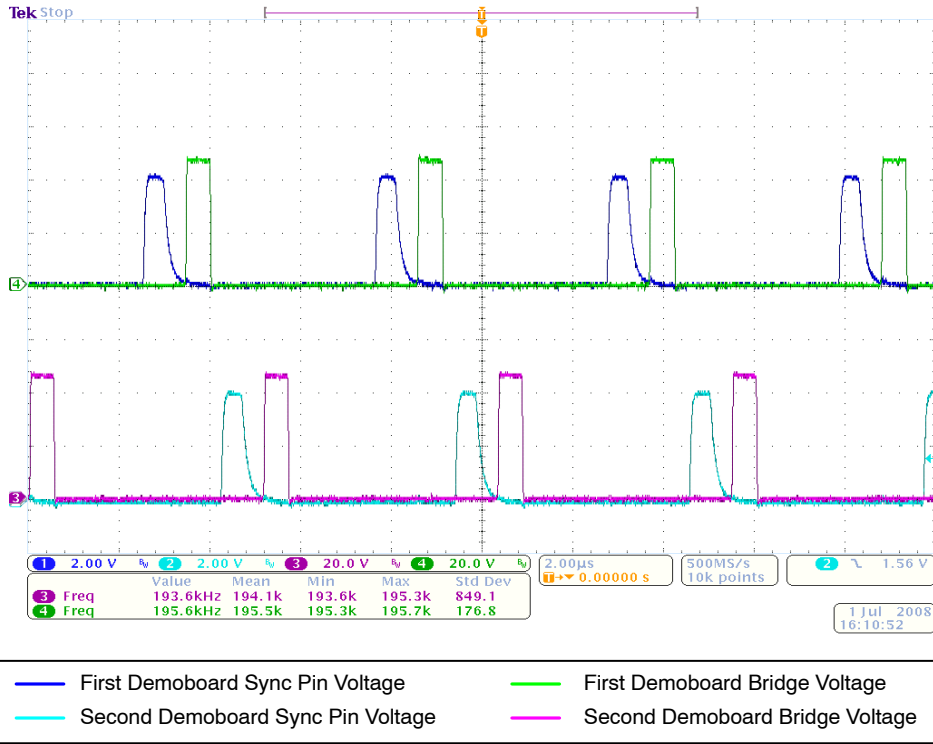


Figure 20. No Synchronization

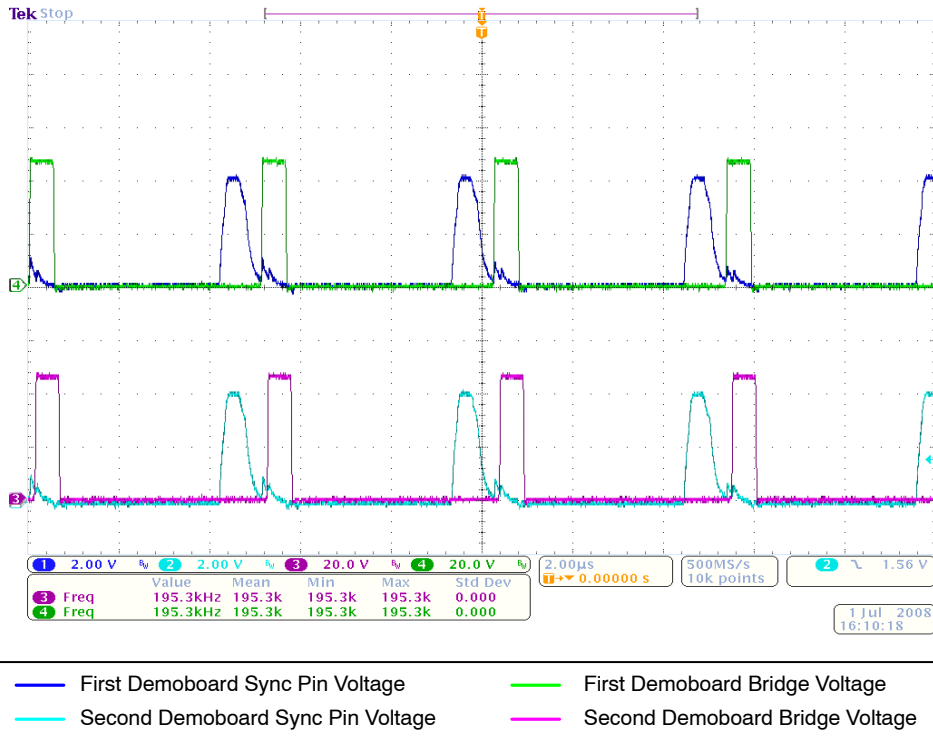


Figure 21. Synchronized – Sync Pins Connected

Line and Load Regulation

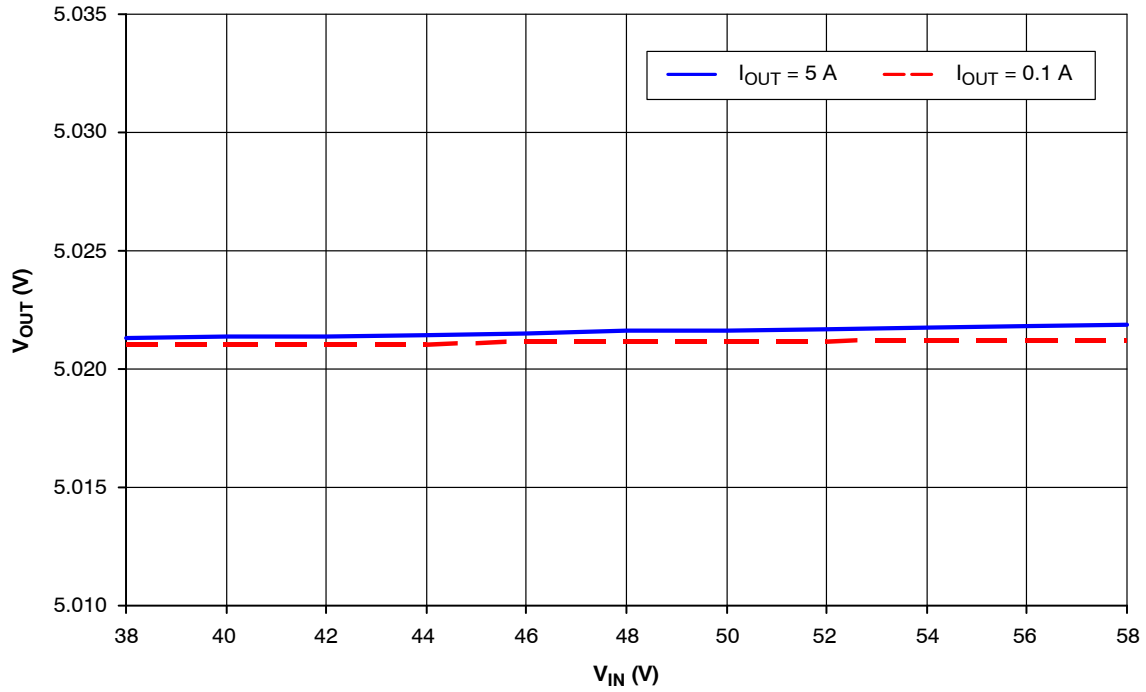


Figure 22. Line Regulation

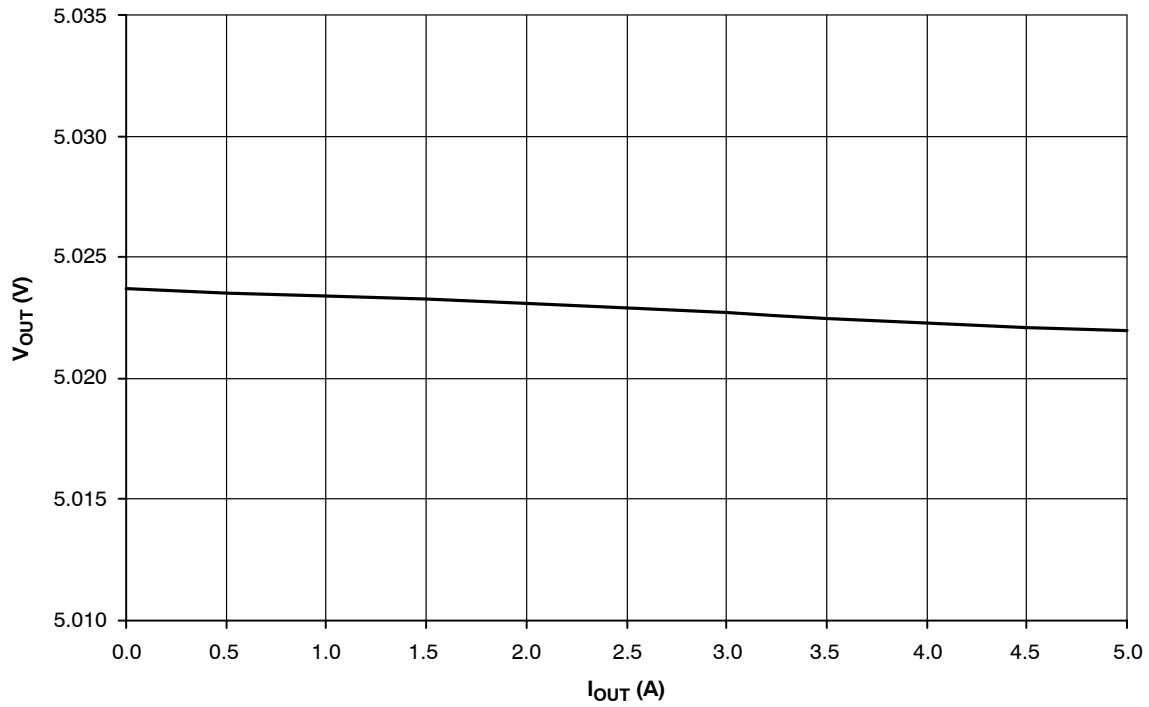


Figure 23. Load Regulation $V_{IN} = 48\text{ V}$

EVBUM2356/D

Efficiency

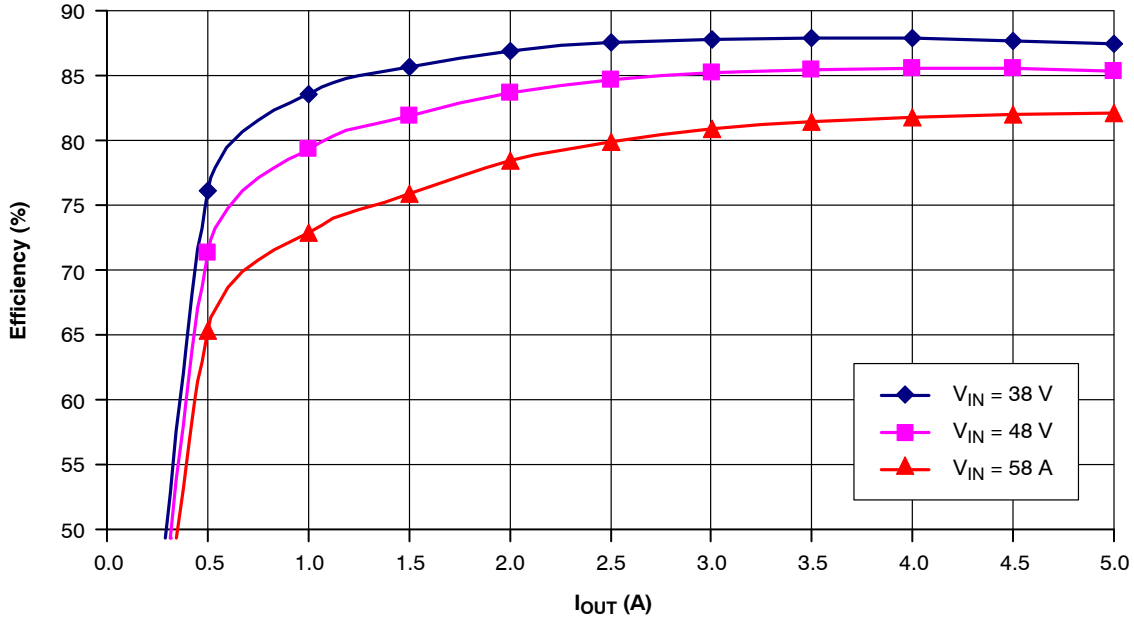


Figure 24. Efficiency

	Unit	
Pind, winding	0.32	W ← Inductor Winding Loss
Pcore	1.20	W ← Core Loss in Inductor. Available in Inductor Data Sheet
Pstatic, IC	0.03	W ← Static Power Loss of the IC
Phigh_gate	0.02	W ← Power Loss of High Power Switch Gate Charge
Plow_gate	0.06	W ← Power Loss of Low Power Switch Gate Charge
Pdynam, IC	0.07	W ← Dynamic Power Loss of the IC
Phigh_switch, cond	0.32	W ← Conduction Loss of High Power Switcher
Plow_switch, cond	0.72	W ← Conduction Loss of Low Power Switcher
Phigh_switch, sw	0.21	W ← Switching Loss of High Power Switcher
Plow_switch, sw	0.00	W ← Switching Loss of Low Power Switcher
Plow_switch, body	0.92	W ← Body Diode Recovery Charge Loss
Plow_dead_time	0.11	W ← Body Diode Conduction Loss
P_switch_capacit	0.07	W ← Switchers Capacitance Loss
Ppreregulator	0.31	W ← Power Loss of Linear Preregulator V _{IN} → V _{CC}
Ploss, total	4.37	W ← Total Loss
Pout	25.00	W ← Output Power
Pin	29.37	W ← Input Power = Output Power + Total Loss
Effectivity	85	% ← Efficiency of Converter (Est: ±5%)

Figure 25. Power Loss Review from Spreadsheet

EVBUM2356/D

Bode Plot

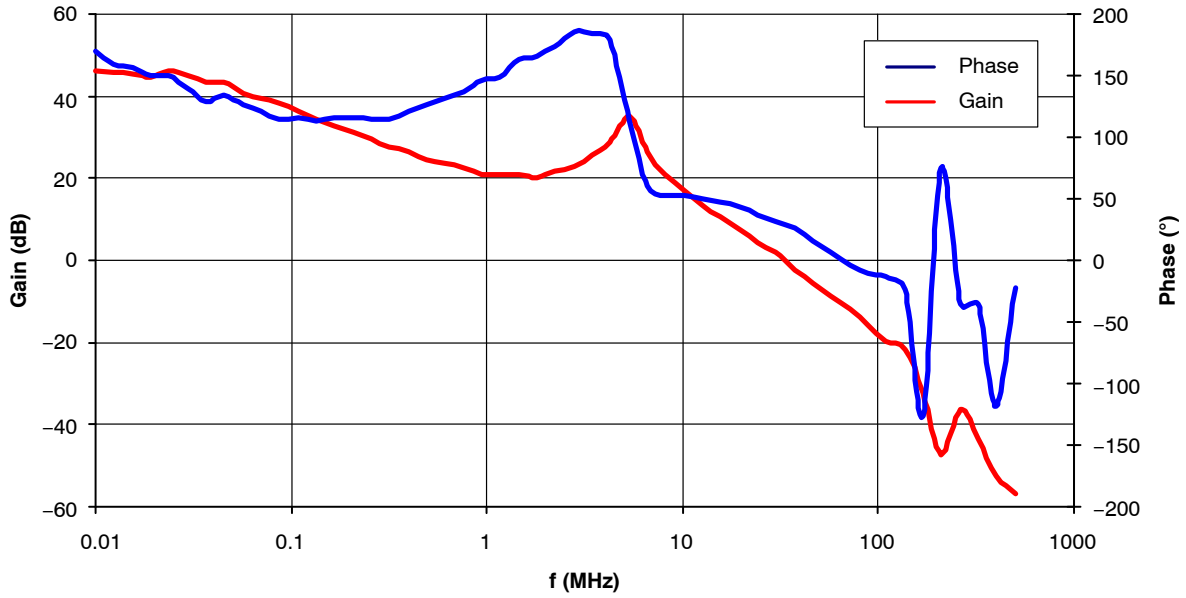


Figure 26. Bode Plot $V_{IN} = 48\text{ V}$, $I_{OUT} = 5\text{ A}$

EVBUM2356/D

Table 3. BILL OF MATERIALS FOR THE NCP1034 DEMOBOARD (Note 1)

Parts	Qty	Description	Value	Tolerance	Footprint	Manufacturer	Manufacturer Part Number	Substitution Allowed
R9	1	Resistor SMD	1.2 k Ω	1%	1206	Vishay	CRCW12061K20FKEA	Yes
R5	1	Resistor SMD	3.9 k Ω	1%	1206	Vishay	CRCW12063K90FKEA	Yes
R3	1	Resistor SMD	4.7 k Ω	1%	1206	Vishay	CRCW12064K70FKEA	Yes
R2	1	Resistor SMD	5.6 k Ω	1%	1206	Vishay	CRCW12065K60FKEA	Yes
R1	1	Resistor SMD	16.9 k Ω	1%	1206	Vishay	CRCW120616K9FKEA	Yes
R6	1	Resistor SMD	20 k Ω	1%	1206	Vishay	CRCW120620K0FKEA	Yes
R11A, R11B, R11C, R11D, R11E	5	Resistor SMD	12 k Ω	1%	1206	Vishay	CRCW120612K0FKEA	Yes
R4	1	Resistor SMD	110 k Ω	1%	1206	Vishay	CRCW1206110KFKEA	Yes
R7, R8, R10	3	Resistor SMD	10 k Ω	1%	1206	Vishay	CRCW120610K0FKEA	Yes
R12A, R13, R14B, R15	4	Resistor SMD	0 Ω	1%	1206	Vishay	CRCW120600R0FKEA	Yes
R12B, R14A	2	Resistor SMD	NU	-	1206	-	-	-
C8	1	Ceramic Capacitor SMD	1.8 nF	10%	1206	Kemet	C1206C182K5RAC-TU	Yes
C6	1	Ceramic Capacitor SMD	12 nF	10%	1206	Kemet	C1206C123K5RACTU	Yes
C5	1	Ceramic Capacitor SMD	220 nF	10%	1206	Kemet	C1206C224K5RACTU	Yes
C7	1	Ceramic Capacitor SMD	330 pF	10%	1206	Yageo	CC1206KRX7R9BB331	Yes
C11, C12	2	Ceramic Capacitor SMD	NU	-	1206	-	-	Yes
C2, C3, C4, C10	4	Ceramic Capacitor SMD	100 nF	10%	1206	Kemet	C1206F104K1RACTU	Yes
C9A, C9B, C9C	3	Ceramic Capacitor SMD	47 μ F/6.3 V	20%	1206	Kemet	C1210C476M9PAC7800	Yes
C1A, C1B	2	Ceramic Capacitor SMD	2.2 μ F/100 V	10%	1206	Murata	GRM32ER72A225KA35L	Yes
C1C, C1D, C1E, C1F	4	Ceramic Capacitor SMD	NU	-	1206	-	-	Yes
C9D, C9E	2	Electrolytic Capacitor	NU	-	8x15	-	-	Yes
L1	1	Inductor SMD	13 μ H	20%	13.2x12.8	Würth	7443551131	Yes
D1	1	Switching Diode	MMSD4148	-	SOD-123	ON Semiconductor	MMSD4148T1G	Yes
D2	1	Zener Diode 500 mW 12 V	MMSZ4699	-	SOD1-23	ON Semiconductor	MMSZ4699T1G	Yes
Q1	1	NPN Transistor	NU	-	DPAK	-	-	Yes
Q2	1	Power N-MOSFET	NTD3055	-	DPAK	ON Semiconductor	NTD3055-150G	Yes
Q3	1	Power N-MOSFET	NTD24N06	-	DPAK	ON Semiconductor	NTD24N06T4G	Yes
IO1	1	High Voltage Synchronous PWM Buck Controller	NCP1034	-	SOIC-16	ON Semiconductor	NCP1034DR2G	No
X1	1	Inlet Terminal Block	PCB 2 WAY	-	Pitch: 5 mm	Lumberg	KRM 02	Yes
X2	1	Outlet Terminal Block	PCB 2 WAY	-	Pitch: 5 mm	Lumberg	KRM 02	Yes

1. All parts are Pb-Free

onsemi, **Onsemi**, and other names, marks, and brands are registered and/or common law trademarks of Semiconductor Components Industries, LLC dba "**onsemi**" or its affiliates and/or subsidiaries in the United States and/or other countries. **onsemi** owns the rights to a number of patents, trademarks, copyrights, trade secrets, and other intellectual property. A listing of **onsemi**'s product/patent coverage may be accessed at www.onsemi.com/site/pdf/Patent-Marking.pdf. **onsemi** is an Equal Opportunity/Affirmative Action Employer. This literature is subject to all applicable copyright laws and is not for resale in any manner.

The evaluation board/kit (research and development board/kit) (hereinafter the "board") is not a finished product and is not available for sale to consumers. The board is only intended for research, development, demonstration and evaluation purposes and will only be used in laboratory/development areas by persons with an engineering/technical training and familiar with the risks associated with handling electrical/mechanical components, systems and subsystems. This person assumes full responsibility/liability for proper and safe handling. Any other use, resale or redistribution for any other purpose is strictly prohibited.

THE BOARD IS PROVIDED BY ONSEMI TO YOU "AS IS" AND WITHOUT ANY REPRESENTATIONS OR WARRANTIES WHATSOEVER. WITHOUT LIMITING THE FOREGOING, ONSEMI (AND ITS LICENSORS/SUPPLIERS) HEREBY DISCLAIMS ANY AND ALL REPRESENTATIONS AND WARRANTIES IN RELATION TO THE BOARD, ANY MODIFICATIONS, OR THIS AGREEMENT, WHETHER EXPRESS, IMPLIED, STATUTORY OR OTHERWISE, INCLUDING WITHOUT LIMITATION ANY AND ALL REPRESENTATIONS AND WARRANTIES OF MERCHANTABILITY, FITNESS FOR A PARTICULAR PURPOSE, TITLE, NON-INFRINGEMENT, AND THOSE ARISING FROM A COURSE OF DEALING, TRADE USAGE, TRADE CUSTOM OR TRADE PRACTICE.

onsemi reserves the right to make changes without further notice to any board.

You are responsible for determining whether the board will be suitable for your intended use or application or will achieve your intended results. Prior to using or distributing any systems that have been evaluated, designed or tested using the board, you agree to test and validate your design to confirm the functionality for your application. Any technical, applications or design information or advice, quality characterization, reliability data or other services provided by **onsemi** shall not constitute any representation or warranty by **onsemi**, and no additional obligations or liabilities shall arise from **onsemi** having provided such information or services.

onsemi products including the boards are not designed, intended, or authorized for use in life support systems, or any FDA Class 3 medical devices or medical devices with a similar or equivalent classification in a foreign jurisdiction, or any devices intended for implantation in the human body. You agree to indemnify, defend and hold harmless **onsemi**, its directors, officers, employees, representatives, agents, subsidiaries, affiliates, distributors, and assigns, against any and all liabilities, losses, costs, damages, judgments, and expenses, arising out of any claim, demand, investigation, lawsuit, regulatory action or cause of action arising out of or associated with any unauthorized use, even if such claim alleges that **onsemi** was negligent regarding the design or manufacture of any products and/or the board.

This evaluation board/kit does not fall within the scope of the European Union directives regarding electromagnetic compatibility, restricted substances (RoHS), recycling (WEEE), FCC, CE or UL, and may not meet the technical requirements of these or other related directives.

FCC WARNING – This evaluation board/kit is intended for use for engineering development, demonstration, or evaluation purposes only and is not considered by **onsemi** to be a finished end product fit for general consumer use. It may generate, use, or radiate radio frequency energy and has not been tested for compliance with the limits of computing devices pursuant to part 15 of FCC rules, which are designed to provide reasonable protection against radio frequency interference. Operation of this equipment may cause interference with radio communications, in which case the user shall be responsible, at its expense, to take whatever measures may be required to correct this interference.

onsemi does not convey any license under its patent rights nor the rights of others.

LIMITATIONS OF LIABILITY: **onsemi** shall not be liable for any special, consequential, incidental, indirect or punitive damages, including, but not limited to the costs of requalification, delay, loss of profits or goodwill, arising out of or in connection with the board, even if **onsemi** is advised of the possibility of such damages. In no event shall **onsemi**'s aggregate liability from any obligation arising out of or in connection with the board, under any theory of liability, exceed the purchase price paid for the board, if any.

The board is provided to you subject to the license and other terms per **onsemi**'s standard terms and conditions of sale. For more information and documentation, please visit www.onsemi.com.

PUBLICATION ORDERING INFORMATION

LITERATURE FULFILLMENT:

Email Requests to: orderlit@onsemi.com

onsemi Website: www.onsemi.com

TECHNICAL SUPPORT

North American Technical Support:

Voice Mail: 1 800-282-9855 Toll Free USA/Canada

Phone: 011 421 33 790 2910

Europe, Middle East and Africa Technical Support:

Phone: 00421 33 790 2910

For additional information, please contact your local Sales Representative