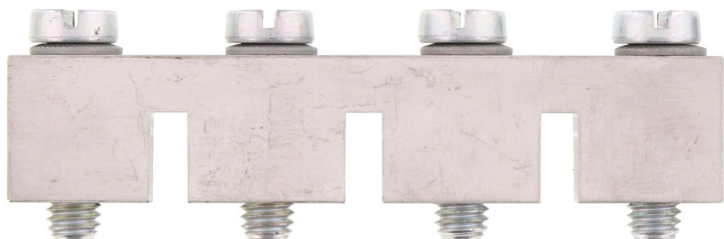


Data sheet

17267.0 SQ 70/4



Cross-connector, No. of poles: 4, Mounting type: Can be screwed on, Width: 75.3 mm, Rated cross-section: 70 mm², Colour: natural

Business data

Article number	17267.0
Article name	SQ 70/4
GTIN (EAN)	4044211186869
Packaging unit	10
Quantity unit	PC
Weight per piece (not including packaging)	75.64 g
Weight per piece (including packaging)	75.9 g
Unit of weight	G
Customs number	85389099
Country of origin	DE
Product description	Cross-connector
Colour	Natural

Technical data

Dimensions

Length	10 mm
Width	75.3 mm
Height	24.5 mm
Hole diameter	5.5 mm
Hole spacing (mid-point to mid-point)	20.5 mm
Pitch size	20.5 mm

Ratings

Max. voltage	1000 V
Rated current	192 A
Current load, max.	232 A
Rated cross-section	70 mm ²
Contamination degree	3

Connection data

No. of poles	4
Screw head	Slotted
Screw threading	M 6
Tightening torque, min.	3.2 Nm
Tightening torque, max.	3.7 Nm

Materials

Material	Copper
Surface	Tin-plated
Surface screw	Galvanized

Further technical data

Mounting type	Screwable
Number of bridged terminals	4

Environmental Product Compliance

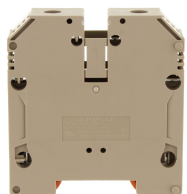
REACH Conform	yes
REACH Reference date	2023-01-17
REACH Candidate Substance Note	No
RoHS Conform	yes

Media



Accessories

##INVERSE##CONTA-CONNECT



Feed-through terminal, Screw connection, Mounting type: Mounting rail TS 35/7.5, Rated cross-section: 70 mm², Width: 20.5 mm, Colour: Beige

Article number	Article name	GTIN (EAN)	Packaging unit
<u>17161.2</u>	SRK 70/2A BG	4044211189273	10



Feed-through terminal, Screw connection, Mounting type: Mounting rail TS 35/7.5, Rated cross-section: 70 mm², Width: 20.5 mm, Colour: Black-yellow

Article number	Article name	GTIN (EAN)	Packaging unit
<u>17162.2</u>	SRK 70/2A/PE BKYE	4044211186777	10 ST