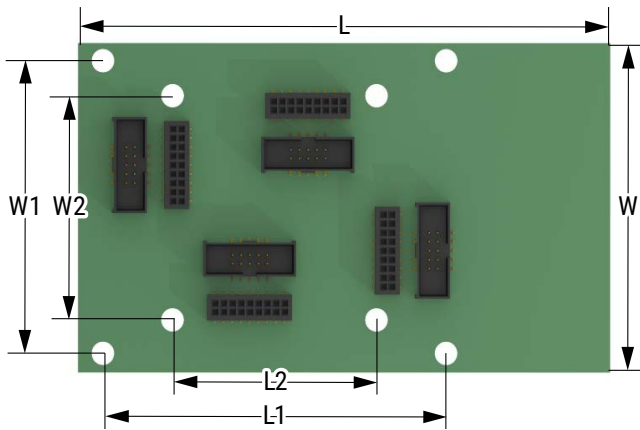


KEMET, QCS, Control Board for SMD Sensor Q*S Modules, Infrared, I²C Communication Compatible



General Information	
Series:	QCS
Type:	Flame, Gas and Motion Detection
Style:	Connector
Description:	Evaluation Kit
Kit Contains:	Preassembled Backplane PCB, USB Communications Cable, 4 Ribbon Cables, USB Stick with Evaluation Software
RoHS:	Yes

Dimensions	
L	82 mm
L1	54 mm
L2	34 mm
W	48 mm
W1	42 mm
W2	31 mm

Specifications	
Temperature Range:	+15/+35°C
Miscellaneous:	Control Board for SMD Sensor Q*S modules, Maximum 4 modules can be connected on one control board.
Packaging Specifications	
Packaging:	ESD Protective Bag in a Box
Packaging Quantity:	1
Weight:	250 g

For additional sources of information, please refer to <https://www.kemet.com/en/us/sensors/environmental-sensors.html>