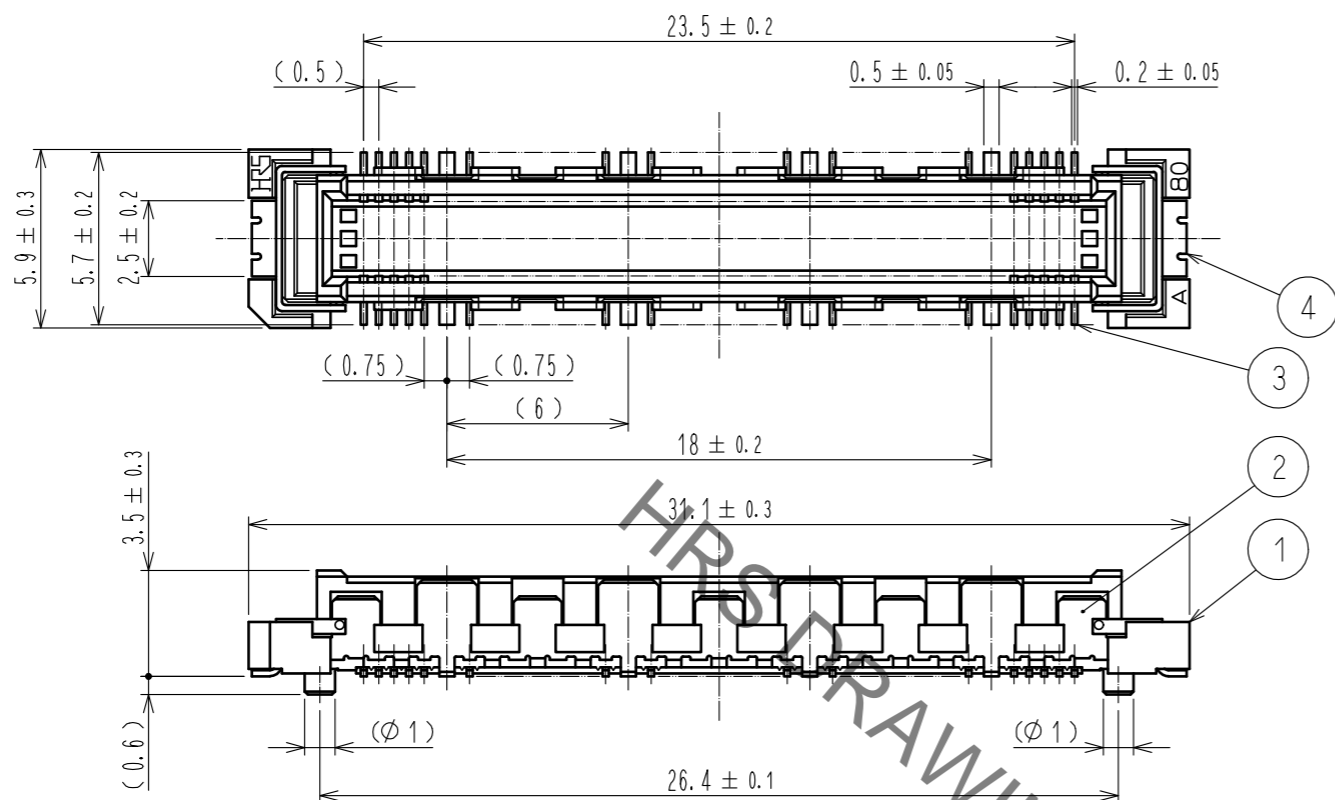
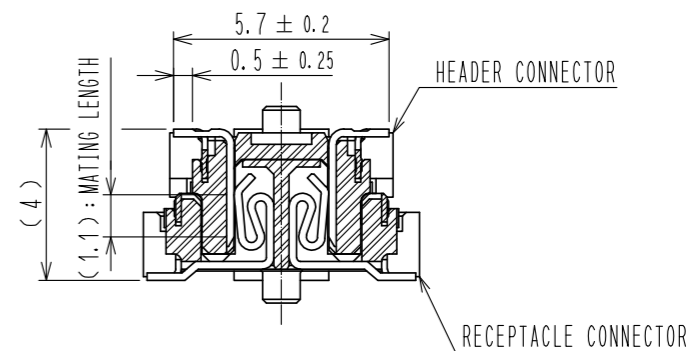


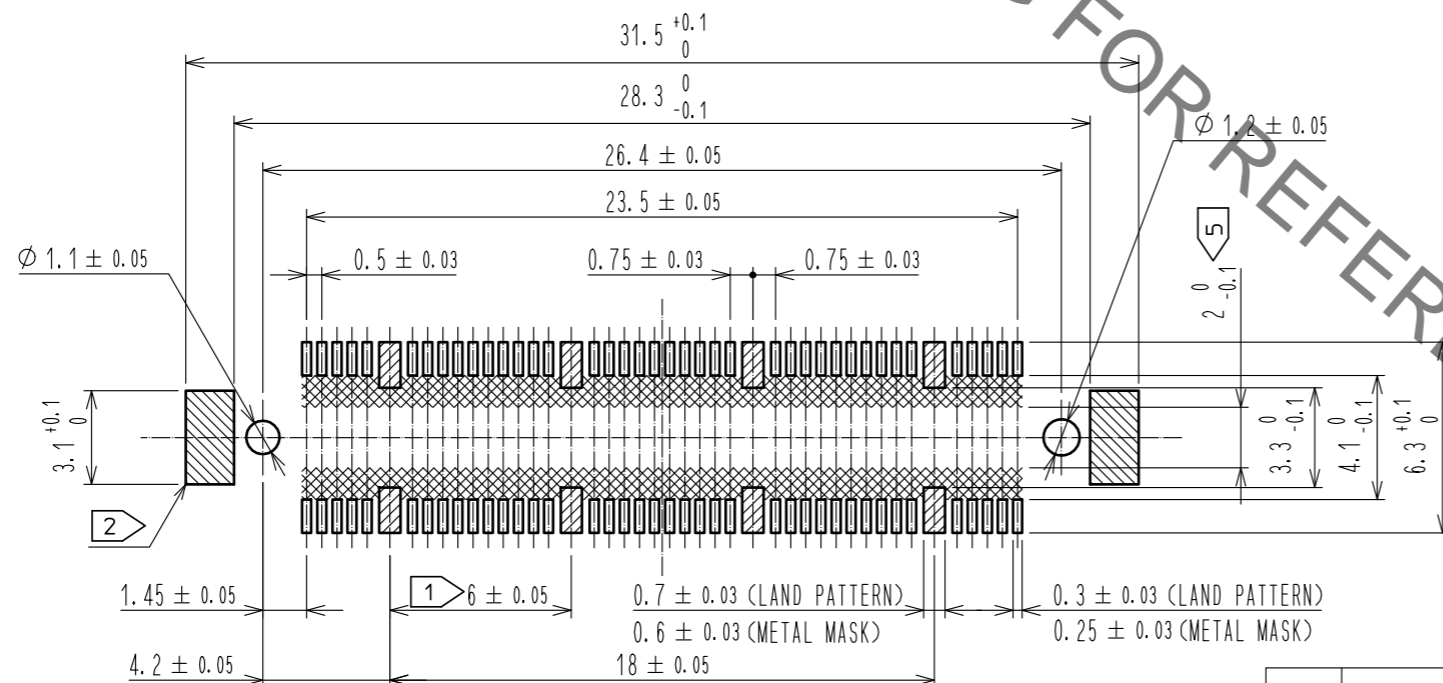
Apr.1.2023 Copyright 2023 HIROSE ELECTRIC CO., LTD. All Rights Reserved.  
In case of consideration for using Automotive equipment / device which demand high reliability, kindly contact our sales window correspondents.



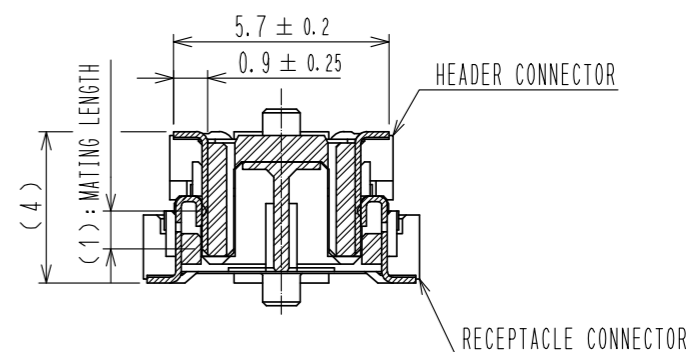
CROSS CUT SECTION - SIGNAL(5:1)



RECOMMENDED LAND PATTERN DIMENSION OF PCB



CROSS CUT SECTION - GROUND(5:1)



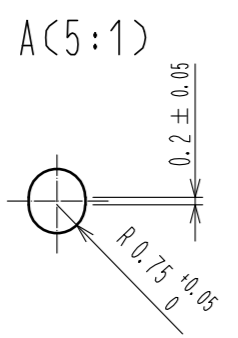
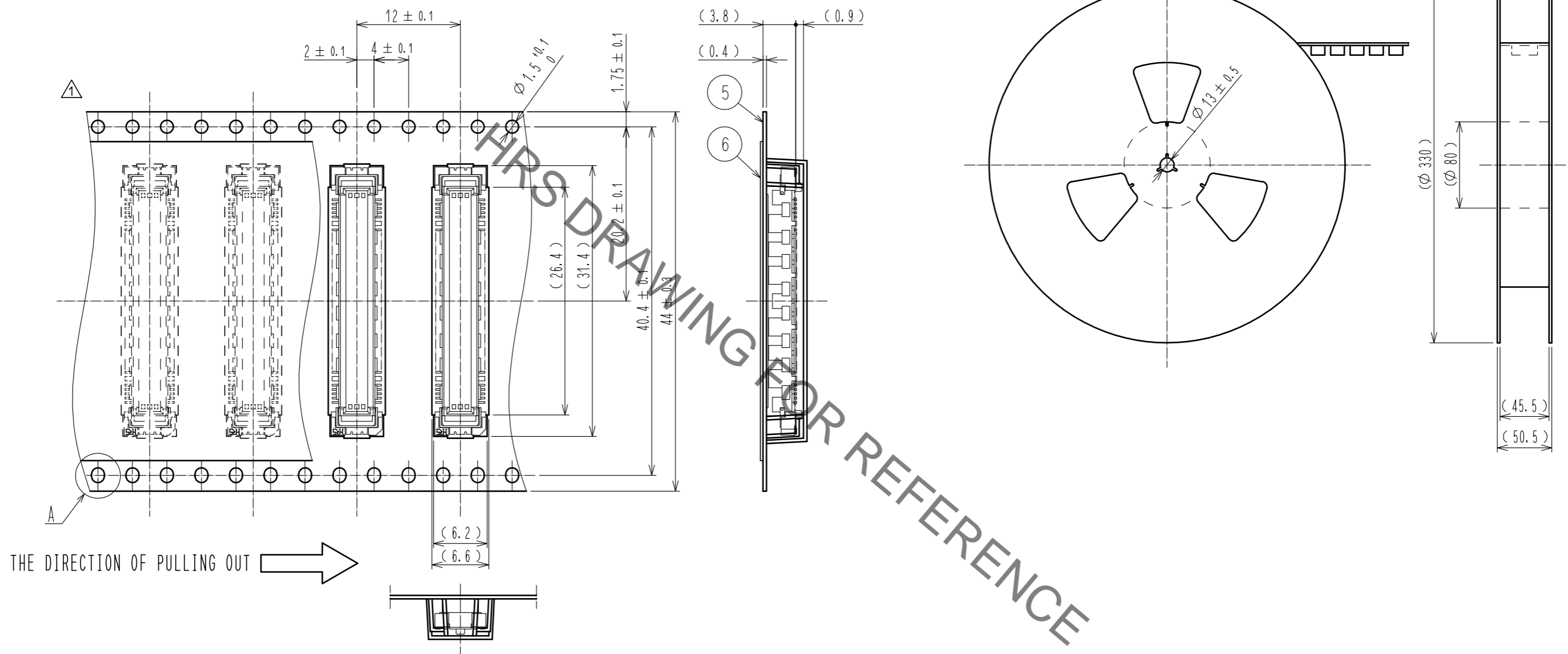
- NOTES
- 1 8 HATCHED PARTS : GROUND CIRCUIT.
  - 2 2 HATCHED PARTS : GROUND CIRCUIT.
  - 3 SMT LEAD-COPLANARITY : 0.1 MAX.
  - 4 THIS PRODUCT HAS NO POLARITY TO PATTERN FOR MOUNTING.
  - 5 MAKE SURE WIDTH OF PATTERN IS WITHIN THAT OF LAND. OR LEAD MAY TOUCH PATTERN. (THIS APPLIES TO HATCHED AREA.)
  - 6 EMBOSSED CARRIER TAPE PACKAGE IS APPLIED ON THIS PRODUCT. PLEASE REFER TO THE SHEET 2/2 FOR THE DETAILS.
  - 7 THE DIMENSIONS IN PARENTHESES ARE FOR REFERENCE.

3	PHOSPHOR BRONZE	CONTACT AREA :GOLD 0.1μm min.	6	POLYESTER	TOP COVER TAPE
		LEAD AREA :TIN 1μm min.			
		UNDER PLATING:NICKEL 1μm min.			
2	PHOSPHOR BRONZE	TIN-PLATING	5	POLYSTYRENE	EMBOSSED CARRIER TAPE
1	LCP	BEIGE	4	PHOSPHOR BRONZE	TIN-PLATING
NO.	MATERIAL	FINISH . REMARKS	NO.	MATERIAL	FINISH . REMARKS
UNITS mm		SCALE 4 : 1	COUNT 1	DESCRIPTION OF REVISIONS DIS-F-00015123	
APPROVED :HS. OKAWA 20050926			DESIGNED SY. KUDO	CHECKED HT. YAMAGUCHI	
CHECKED :HS. OZAWA 20050926			DATE 20220831		
DESIGNED :TH. NODA 20050902			DRAWING NO. EDC-151944-91-21		
DRAWN :TH. NODA 20050902			PART NO. FX10A-80P/8-SV(91)		
HRS HIROSE ELECTRIC CO., LTD.			CODE NO. CL0570-0001-5-91		

Apr.1.2023 Copyright 2023 HIROSE ELECTRIC CO., LTD. All Rights Reserved.  
 In case of consideration for using Automotive equipment / device which demand high reliability, kindly contact our sales window correspondents.

DRAWING FOR PACKING (2:1)

REELED DIMENSION (Free)



- NOTES
- 8 1 REEL : 1000 CONNECTORS.
  - 9 MINIMUM 10 COMPARTMENTS FROM BOTH REEL ENDS REMAIN EMPTY.
  - 10 THIS PRODUCT HAS NO POLARITY TO TAPE AND REEL PACKAGING.
  - 11 THE DIMENSIONS IN PARENTHESES ARE FOR REFERENCE.

<b>HRS</b>	DRAWING NO.	EDC-151944-91-21
	PART NO.	FX10A-80P/8-SV(91)
	CODE NO.	CL0570-0001-5-91