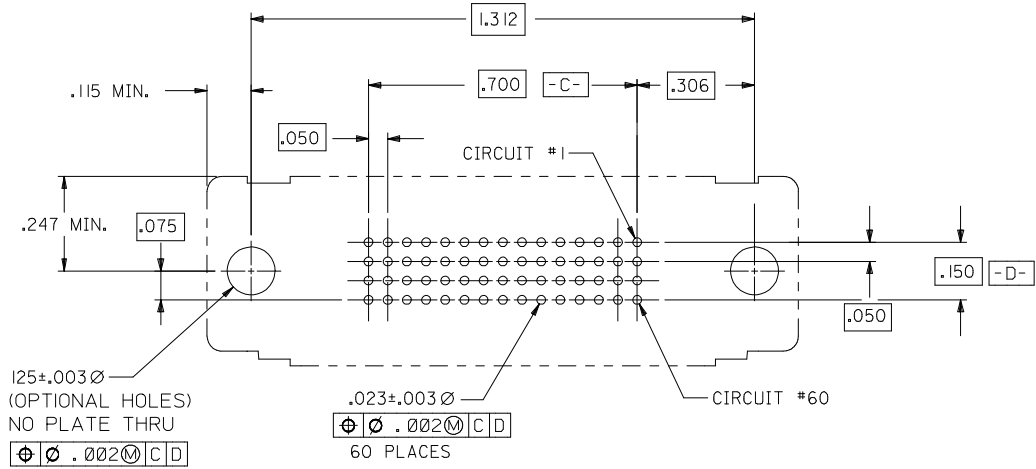


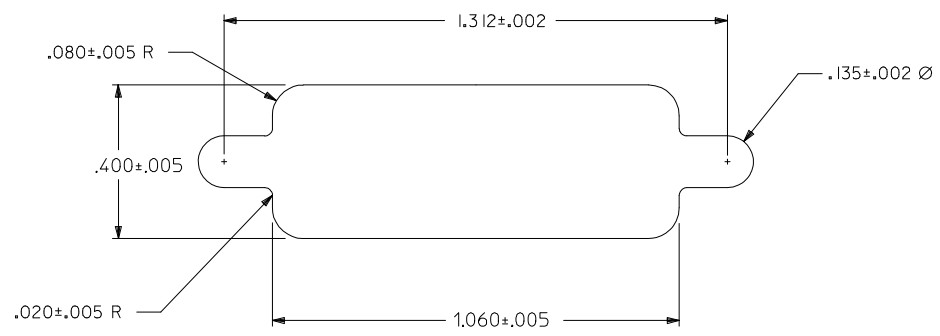
- NOTES:
- 1) MATERIALS:
    - HOUSING: GLASS FILLED LCP (LIQUID CRYSTAL POLYMER), UL 94V-0, COLOR: BLACK.
    - MOLDED STICK: GLASS FILLED LCP (LIQUID CRYSTAL POLYMER), UL 94V-0, COLOR: BLACK.
    - FEMALE TERMINAL: HIGH PERFORMANCE COPPER ALLOY
    - OUTER SHELL: DEEP DRAWN STEEL.
  - 2) PLATING:
    - TERMINAL: 30 MICROINCHES / 0.76 MICROMETER MIN. GOLD IN SELECTIVE AREA, 100 MICROINCHES / 2.54 MICROMETERS MIN. TIN IN SELECTIVE AREA, OVER NICKEL UNDERPLATE OVERALL.
    - OUTER SHELL: 100 MICROINCHES / 2.54 MICROMETER MIN. BRIGHT NICKEL OVER COPPER FLASH (OPTIONAL).
  - 3) CONFORMS TO PRODUCT SPECIFICATION PS-70928.
  - 4) PARTS PACKAGED PER PK-70873-0291.
  - 5) THREAD GAUGE MAY REQUIRE UP TO 1 IN.-LB. OF TORQUE DURING GAUGING PROCESS.
  - 6) PART COMPLIES WITH CLASS B OF COSMETIC SPECIFICATION PS-45499-002

SECTION X-X

<b>MOD PANEL CUT-OUT</b> EC NO: UCP2012-0335 DRW:DMORGAN 2011/08/15 CHKD:MPHOFF 2014/04/11 APPR:SMILLER 2014/05/12	QUALITY SYMBOLS ▽=0 ▽=0 ▽=0	GENERAL TOLERANCES (UNLESS SPECIFIED)		DIMENSION STYLE <b>INCH ONLY</b>		SCALE <b>4:1</b>	DESIGN UNITS <b>METRIC</b>	THIRD ANGLE PROJECTION		
				DRAWN BY <b>BSMART</b>	DATE <b>2005/02/14</b>		<b>SALES ASSY, .050 PITCH          60 CKT LFH VERTICAL I/O          M3 SHIELDED RECEPTACLE</b>			
				CHECKED BY <b>BBARKER</b>	DATE <b>2005/02/14</b>					
				APPROVED BY <b>SMILLER</b>	DATE <b>2005/02/14</b>		<b>molex</b> DOCUMENT NO. <b>SD-70928-002</b>			
		MATERIAL NO. <b>70928-0092</b>				SHEET NO. <b>1 OF 2</b>				
REV <b>D</b>	DESCRIPTION <b>MOD PANEL CUT-OUT</b>	DRAFT WHERE APPLICABLE MUST REMAIN WITHIN DIMENSIONS		SIZE <b>C</b>	THIS DRAWING CONTAINS INFORMATION THAT IS PROPRIETARY TO MOLEX INCORPORATED AND SHOULD NOT BE USED WITHOUT WRITTEN PERMISSION					



RECOMMENDED P.C.B. LAYOUT  
COMPONENT SIDE



RECOMMENDED PANEL CUT-OUT

<b>SEE SHEET 1</b> EC NO: UCP2012-0335 DRWN:DMORGAN 2011/08/15 CHKD:MPOFF 2014/04/11 APPR:SMILLER 2014/05/12	QUALITY SYMBOLS ▽=0 ▽=0 ▽=0	GENERAL TOLERANCES (UNLESS SPECIFIED)		DIMENSION STYLE <b>INCH ONLY</b>		SCALE <b>4:1</b>	DESIGN UNITS <b>METRIC</b>	THIRD ANGLE PROJECTION		
		4 PLACES	± ---	± ---	DRAWN BY	DATE	TITLE <b>SALES ASSY, .050 PITCH 60 CKT LFH VERTICAL I/O M3 SHIELDED RECEPTACLE</b>			
		3 PLACES	± ---	± .010	CHECKED BY	DATE				
		2 PLACES	± ---	± ---	APPROVED BY	DATE	<b>molex</b> DOCUMENT NO. <b>SD-70928-002</b>			
1 PLACE	± ---	± ---	MATERIAL NO.	DATE	SHEET NO. <b>2 OF 2</b>					
0 PLACE	± ---	± ---	DRAFT WHERE APPLICABLE MUST REMAIN WITHIN DIMENSIONS						SIZE <b>C</b>	THIS DRAWING CONTAINS INFORMATION THAT IS PROPRIETARY TO MOLEX INCORPORATED AND SHOULD NOT BE USED WITHOUT WRITTEN PERMISSION