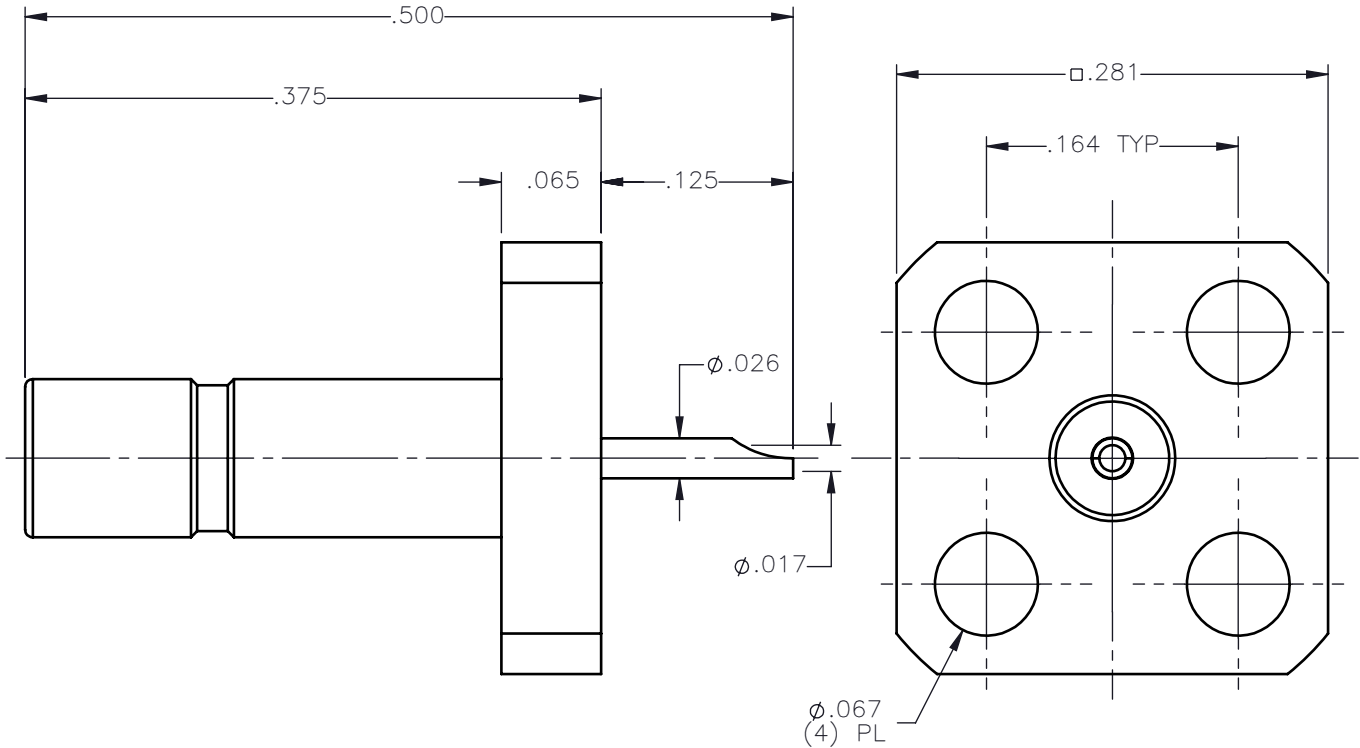


REVISIONS			
REV.	DESCRIPTION	DATE	APPROVED
A	INITIAL RELEASE	12/05/16	N.D.





NOTES:

MATERIALS:

1. BODY = STAINLESS STEEL PER ASTM A582, ALLOY 303, CONDITION "A".
2. INSULATOR = VIRGIN WHITE TEFLON PER ASTM D1710, GRADE 1, TYPE I, CLASS "B".
3. CONTACT = BERYLLIUM COPPER PER ASTM B196, ALLOY C17300, TEMPER TD04.

FINISHES:

1. BODY = GOLD PLATE PER ASTM B488-11, TYPE II, 30μin MIN, GRADE C, OVER 50 TO 100μin STRESS FREE NICKEL PER AMS-QQ-N-290.
2. CONTACT = GOLD PLATE PER ASTM B488-11, TYPE II, 50μin MIN, GRADE C, OVER 100 TO 200μin STRESS FREE SULFAMATE NICKEL PER AMS-QQ-N-290.

UNLESS OTHERWISE SPECIFIED DIMENSIONS ARE IN INCHES TOLERANCES ON	DWN: N.D.	DATE 12/05/16	 <b>a RADIALL company</b>	Property of Radiall		
	CHKD: D.N.	DATE 12/05/16		This document cannot be reproduced or communicated to a third party without prior written permission of RADIALL.		
DECIMAL	ANGLE	APVD: J.M.	DATE 12/05/16	<b>SSMB STRAIGHT MALE JACK (4) HOLE FLANGE MOUNT SOLDER POT RECEPTACLE</b>		
REFERENCE:	MATERIALS AND FINISHES:  SEE NOTES		SIZE A	FSCM NO. 19505	DWG. NO. 7498-1513-000	REV A
ORIGINATED: N.D. DATE: 12/05/16			SCALE 8:1	THIRD ANGLE PROJECTION		SHEET 1 OF 1

7498-1513-000