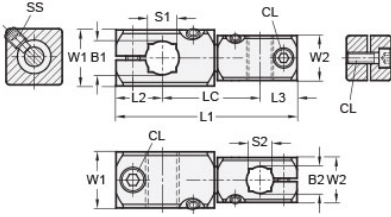




MT10/10-CC2WA-AN

Ruland Adjustable Two-Way Connector Clamp, Thru Holes 10mmx10mm, L 63.5mm, W 20mm, Black Anodized Aluminum




Description

Ruland MT10/10-CC2WA-AN an adjustable two-way connector clamp with thru holes for 10mm round and 8mm square tubes, M5 clamp screws, 20mm width and height, and 63.5mm overall length. It is designed to fit on Ruland tubes and flange bolt bases that begin with MT10. MT10/10-CC2WA-AN is aluminum with a black anodized finish and screws are 304 stainless steel for added corrosion resistance when compared to unplated types. This two-way adjustable connector clamp is commonly used to support tubes for mounting sensors, screens, reflectors, plexiglass machine guards, and other industrial components. It is designed for applications where frequent angular adjustments are needed such as machine diagnostic screens. When paired with MT10:12-ALK-M5-20 adjustable clamping levers the user can rapidly reposition the screen angularly and/or vertically without tools providing for a safer and more comfortable working environment for the employee and helping to increase productivity. MT10/10-CC2WA-AN is manufactured by Otto Ganter, inventoried by Ruland, and RoHS3 compliant.

Product Specifications

Thru Hole 1 Diameter B1	10 mm	Thru Hole 2 Diameter B2	10 mm
Thru Hole Tolerance	+0.09/-0 mm	Thru Hole 2 Tolerance	+0.09/-0 mm
Square Thru Hole S	8 mm	Square Thru Hole 2 S2	8 mm
Width & Height W1	20 mm	Width and Height 2 W2	20 mm
Edge to Center 1 L2	15.5 mm	Edge to Center 2 L3	15.5 mm
Center To Center LC	32.5 mm	Overall Length L1	63.5 mm
Clamp Screw CL	M5	Set Screw SS	M5
Weight (lbs)	0.143300	Material Specification	Anodized Aluminum
Manufacturer	JW Winco/ Otto Ganter	UPC	634529231708
Country of Origin	Germany	Tariff Code	7609.00.0000
UNSPC	31162908		

Note 1 Performance ratings are for guidance only. The user must determine suitability for a particular application.

Prop 65  **WARNING** This product can expose you to the chemical Nickel (metallic), known to the State of California to cause cancer. For more information go to www.P65Warnings.ca.gov.