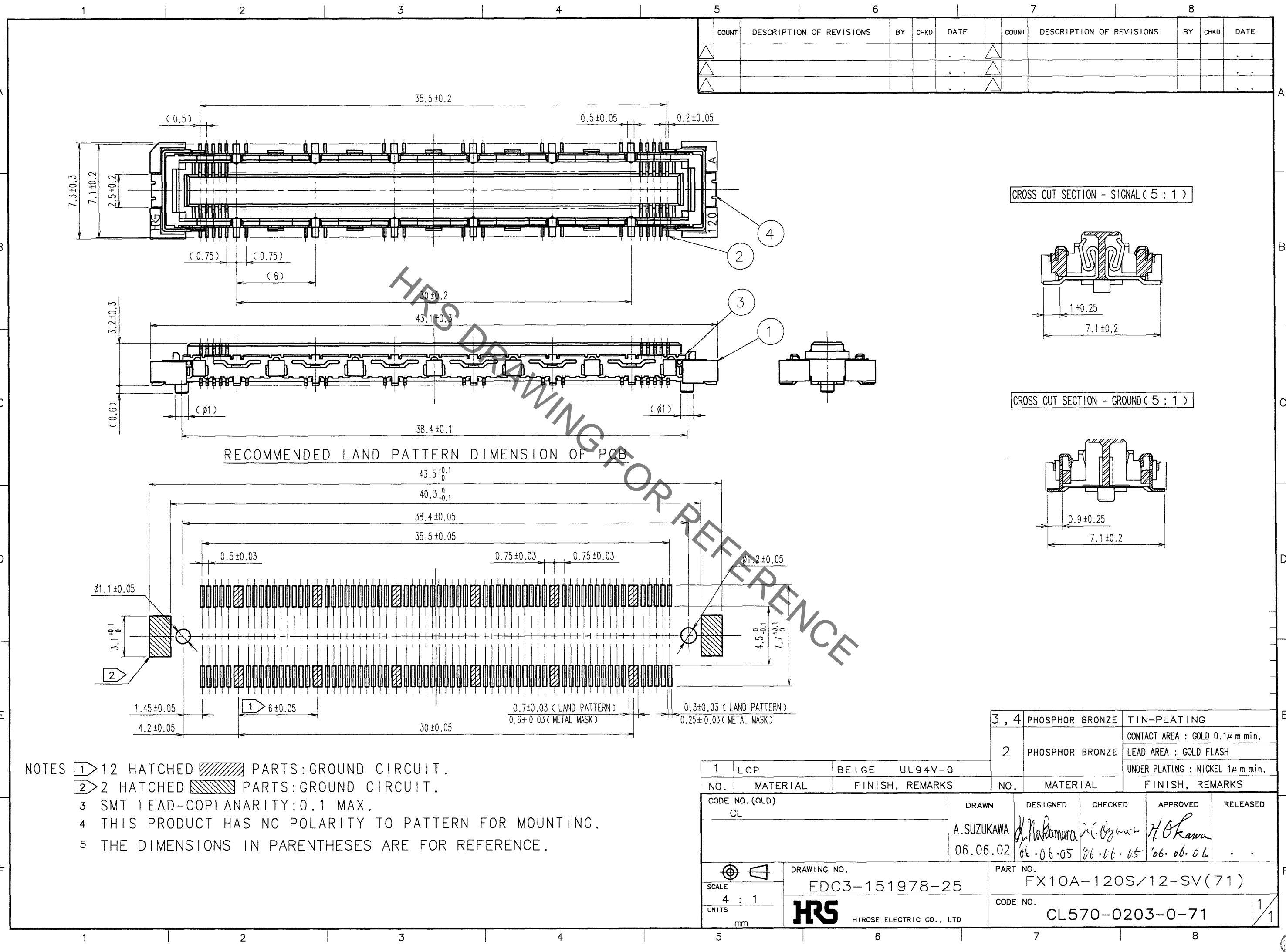
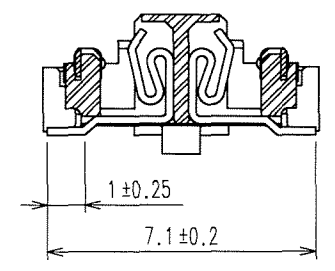


May.1.2023 Copyright 2023 HIROSE ELECTRIC CO., LTD. All Rights Reserved.
 In case of consideration for using Automotive equipment / device which demand high reliability, kindly contact our sales window correspondents.

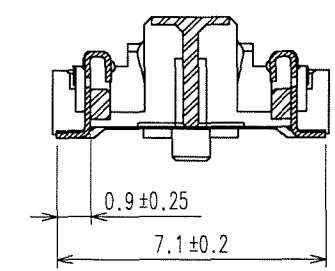


COUNT	DESCRIPTION OF REVISIONS	BY	CHKD	DATE	COUNT	DESCRIPTION OF REVISIONS	BY	CHKD	DATE
△					△				
△					△				
△					△				

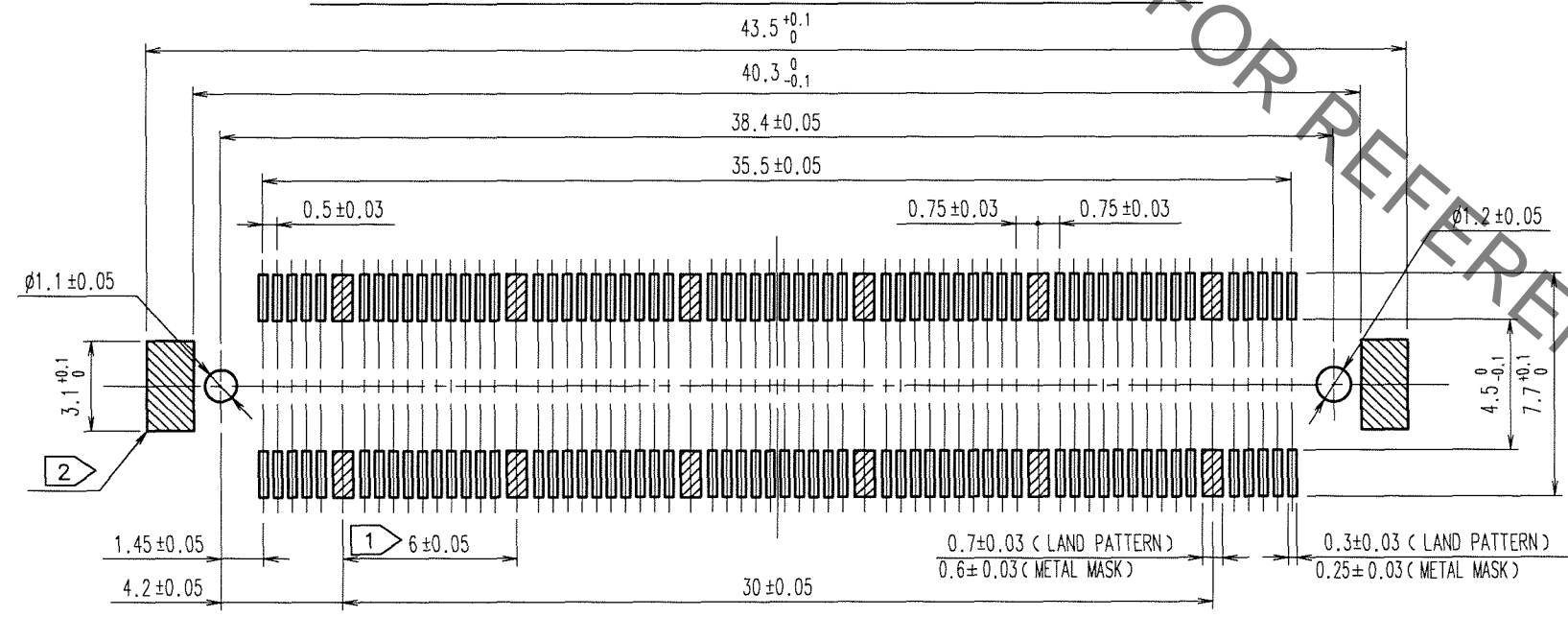
CROSS CUT SECTION - SIGNAL (5 : 1)



CROSS CUT SECTION - GROUND (5 : 1)



RECOMMENDED LAND PATTERN DIMENSION OF PCB



- NOTES
- ① 12 HATCHED PARTS:GROUND CIRCUIT.
 - ② 2 HATCHED PARTS:GROUND CIRCUIT.
 - 3 SMT LEAD-COPLANARITY:0.1 MAX.
 - 4 THIS PRODUCT HAS NO POLARITY TO PATTERN FOR MOUNTING.
 - 5 THE DIMENSIONS IN PARENTHESES ARE FOR REFERENCE.

TO
PCK

NO.	MATERIAL	FINISH, REMARKS	NO.	MATERIAL	FINISH, REMARKS
1	LCP	BEIGE UL94V-0	3, 4	PHOSPHOR BRONZE	TIN-PLATING
			2	PHOSPHOR BRONZE	CONTACT AREA : GOLD 0.1μ m min. LEAD AREA : GOLD FLASH UNDER PLATING : NICKEL 1μ m min.

CODE NO. (OLD)	DRAWN	DESIGNED	CHECKED	APPROVED	RELEASED
CL	A.SUZUKAWA	<i>H. Nakamura</i>	<i>T. Ogawa</i>	<i>H. Okawa</i>	
	06.06.02	06.06.05	06.06.05	06.06.06	

SCALE	DRAWING NO.	PART NO.
4 : 1	EDC3-151978-25	FX10A-120S/12-SV(71)
UNITS	mm	CODE NO.
	HRS HIROSE ELECTRIC CO., LTD	CL570-0203-0-71