



Manage this device with Digi Remote Manager



# DIGI TX64 5G RAIL

## 5G railway-rated cellular router customized for both on-board heavy and light rail railways and metros

Ideal for challenging rail transportation environments, **Digi TX64 5G Rail** router offers 5G/4G/3G cellular connectivity with true enterprise class routing, security, firewall and integrated VPN. It offers a flexible interface design with an integrated Wi-Fi access point and client, USB, serial, inertial-guided GNSS, Bluetooth® and 4-port Gigabit Ethernet switch, as well as a variety of configuration options.

5G is a game-changer for the rail industry. Until now, the speeds needed to securely move massive amounts of data quickly were reserved for wired networks. But today, with the rapid expansion of 5G (with LTE fallback), this fully rail-certified device delivers 5G performance, either as a primary or failover connection. Customers and suppliers

alike will begin to expect 5G connectivity whether it is for other on-board equipment applications or the information being provided to riders. Paving the way for compatibility with FRMCS standards, this first industry-standard 5G rail-rated device prepares you for the future today.

Digi TX64 5G Rail is equipped with precision train positioning via an Untethered Dead Reckoning (UDR) module that reports location data more accurately by taking into account acceleration, speed and angular rate. Regardless of issues with traditional GNSS in certain weather conditions or tunnels, UDR allows you to monitor the train's exact positioning and speed, optimize each train's location and prevent collisions without the use of additional onboard systems.

### FEATURES AND BENEFITS

- High-speed 5G NR cellular radio with 4G LTE-Advanced Pro Cat 20 and 3G fallback
- FirstNet Trusted™ for primary responder communication
- WR44 RR drop-in replacement and upgrade
- Wired Gigabit M12 Ethernet (4-port) for onboard systems
- Dual concurrent 867 Mbps 802.11ac Wi-Fi interfaces
- Untethered dead reckoning combines GNSS with inertial sensors
- Securely deploy, monitor and control devices with **Digi Remote Manager®**
- Cryptographic co-processor with secure key generation and storage

### RELATED PRODUCTS



### APPLICATION EXAMPLE



## SPECIFICATIONS

## DIGI TX64 5G RAIL

## WIRELESS INTERFACES

## WWAN\*

## 5G SUB-6 GHZ WITH 4G LTE AND 3G FALLBACK - WORLDWIDE

5G Sub-6: n1, n2, n3, n5, n7, n8, n12, n20, n25, n28, n38, n40, n41, n48, n66, n71, n77, n78, n79;  
 4G LTE: B1, B2, B3, B4, B5, B7, B8, B12, B13, B14 — FirstNet®, B17, B18, B19, B20, B25, B26, B28, B29, B30, B32, B34, B38, B39, B40, B41, B42, B43, B46, B48, B66, B71  
 3G HSPA+/WCDMA: B1, B2, B3, B4, B5, B6, B8, B9, B19

## CONNECTOR

(4) 50 Ω TNC (center pin: female)

## SIM SLOTS

(2) mini-SIM (2FF)

## SIM SECURITY

SIM slot cover plate included

## WI-FI

## DUAL MODULES

Private backhaul: 2 x 2 MU-MIMO 5 GHz 802.11 a/n/ac Wave 2, 867 Mbps (max)  
 Public Wi-Fi: 2 x 2 MIMO 2.4/5 GHz 802.11 a/b/g/n/ac, 867 Mbps (max)

## HOTSPOT

Captive portal, customizable splash page

## AUTHENTICATION

Basic T & C acceptance, enterprise RADIUS, shared password, HotspotSystem

## 3RD PARTY SERVICES

Content filtering, embedded advertising

## MODES

Up to 8 access points and 1 client per Wi-Fi module (16+2 total) with Digi Accelerated Linux (DAL OS)

## CONNECTORS

Private backhaul: (2) 50 Ω RP-TNC (center pin: male)  
 Public Wi-Fi: (2) 50 Ω RP-TNC (center pin: male)

## GNSS

## TECHNOLOGY

Untethered Dead Reckoning using inertial sensors (accelerometer, gyroscope); multi-constellation (GPS, Galileo, GLONASS, BeiDou)

## SENSITIVITY

-163 dB

## PROTOCOL

NMEA 0183 V 2.3 sentence output

## CONNECTOR

(1) 50 Ω RP-TNC (center pin: male); +3.3 VDC active antenna drive

## HARDWARE

## SERIAL

## PORTS / CONNECTOR

(1) RS-232; DB-9 male

## ETHERNET

## PORTS / CONNECTOR

(4) M12 X-CODE

## STANDARD

IEEE 802.3; 10/100/1000 Base-T

## USB

## PORTS

2

## STANDARD

USB 3.0, Type A

## MEMORY

## RAM

2 GB

## FLASH

8 GB (CFAST card)

## PHYSICAL

## DIMENSIONS

260 x 196 x 51 mm (10.2 x 7.8 x 2 in)

## WEIGHT

3.9 kg (8.6 lbs)

## STATUS LEDS

Power, WWAN signal, WWAN service, Wi-Fi service (per module), GNSS service, LAN (link, activity)

## ENCLOSURE

IP66 aluminum alloy

## POWER

## POWER INPUT

9 - 36 VDC, 60 W minimum power source required; M12 T-CODE with ignition sense

## POWER CONSUMPTION

28 W typical (idle); 41 W (peak RF Tx/Rx)

## ENVIRONMENTAL

## MOUNTING

Slotted mounting flanges, grounding stud

## OPERATING TEMPERATURE

-40 °C to 74 °C (-40 °F to 165.2 °F)

## STORAGE TEMPERATURE

-40 °C to 85 °C (-40 °F to 185 °F)

## RELATIVE HUMIDITY

0% to 95% (non-condensing) at 25 °C (77 °F)

\*Transfer rates are network operator dependent

## SPECIFICATIONS

## DIGI TX64 5G RAIL

### APPROVALS

<b>CELLULAR</b>	PTCRB, AT&T, FirstNet Ready™, T-Mobile, Verizon; visit <a href="http://www.digi.com/resources/certifications">www.digi.com/resources/certifications</a> for latest cellular certifications
<b>SHOCK / VIBRATION</b>	MIL-STD-810G: vibration (Method 414.6C-10, Category 11), shock (Method 516.6, Procedure I)
<b>EMISSIONS / IMMUNITY</b>	FCC Part 15 Class B, EN 50121-3-2, CISPR 16-2-3
<b>ENVIRONMENTAL / INDUSTRIAL</b>	EN 50155, EN 45545-2, IEC 60068-2-1/2-2/2-30

### WARRANTY

<b>PRODUCT WARRANTY</b>	3-year**
-------------------------	----------

\*\*Standard 3-year warranty upgradeable to 5 years with purchase of a Digi Remote Manager® Premier 5-year subscription applicable to the product purchased only at the time of product purchase and with product registration at that time in Digi Remote Manager.

## ENTERPRISE SOFTWARE

## DESCRIPTION

<b>PROTOCOL SUPPORT</b>	HTTPS, FTP client, TLS v1.2, SCP (client and server), SFTP, SNMP (v2/v3), SSH; remote management via <b>Digi Remote Manager®</b> ; protocol analyzer, ability to capture PCAP for use with Wireshark; DynDNS; dynamic DNS client compatible with BIND9/No-IP/DynDNS; captive portal, Intelliflow; 509 certificate management; dead reckoning
<b>SECURITY</b>	IP filtering, stateful firewall, custom firewall rules (iptables), address and port translation; Authentication: RADIUS, TACACS+; certificates; MAC address filtering; VLAN support
<b>VPN</b>	IPSec with IKEv1, IKEv2, NAT Traversal; OpenVPN client and server; GRE VPN tunnels; cryptology: SHA-1/256/384/512, MD5, RSA; encryption: 3DES and AES up to 256-bit (CBC mode for IPSec); Diffie Hellman: DH groups 1-32 (CURVE448)
<b>ROUTING/FAILOVER</b>	IP pass-through; NAT, NAPT with IP port forwarding; Ethernet bridging; Ethernet bonding; GRE; multicast routing; routing protocols: RIP (v1, v2) OSPF, IPv6 RIP-NG, OSPFv3, BGP; IP failover: VRRP; automatic failover; <b>Digi SureLink®</b>
<b>OTHER PROTOCOLS</b>	DHCP; dynamic DNS client compatible with No-IP/DynDNS; Nagios, DNS server, NTP server, mDNS, IPPerf
<b>LOCAL MANAGEMENT</b>	Web interface (HTTPS); CLI (SSH, serial port); SNMP v2/v3 read-only; custom factory configuration
<b>MANAGEMENT / TROUBLESHOOTING PROTOCOLS</b>	Protocol analyzer with PCAP for Wireshark, event and system logging (with syslog), accessible from <b>Digi Remote Manager</b> , SFTP or SCP, CLI, Web UI, Intelliflow
<b>PROGRAMMING TOOLS / ENVIRONMENTS</b>	Python v3 (regularly updated to newest version)

For a comprehensive list of operating system features, please visit [www.digi.com/solutions/by-technology/dal-operating-system/features](http://www.digi.com/solutions/by-technology/dal-operating-system/features).

## PRODUCT IMAGES

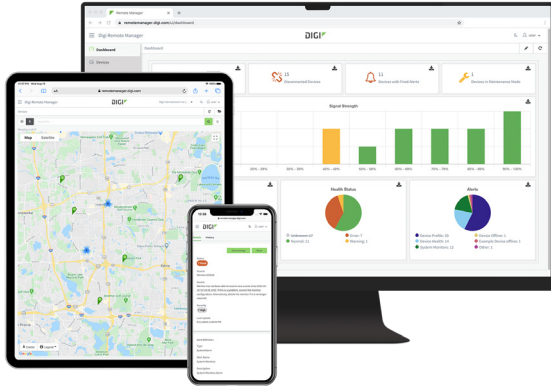
### FRONT



### BACK



# DIGI REMOTE MANAGER®



Digi Remote Manager is the technology platform that brings networks to the next level, allowing networks — and the people who manage them — to work smarter. With Digi Remote Manager you can transform a multitude of dispersed IoT devices into a dynamic, intelligent network. Now you can easily deploy, monitor and diagnose thousands of mission-critical devices from a single point of command — on your desktop, tablet or phone. All the while, its software-defined security diligently safeguards your entire Digi ecosystem.

Learn more at [www.digi.com/digi-remote-manager](http://www.digi.com/digi-remote-manager)

## CAPABILITIES

- Activate, monitor and diagnose your mission-critical devices from a single point of command and control
- Schedule key operations — including firmware updates and file management — on a single device or on a group of devices, keeping your network functionality up-to-date and maintaining compliance standards
- Manage edge devices out-of-band via console terminal access
- Keep tabs on device health and connectivity across device deployments of any size
- Create detailed reports and enable real-time alerts for specified conditions
- Integrate device data through open APIs to gain deeper insights and control with third-party applications
- Report and alert on performance statistics, including connection history, signal quality, latency, data usage and packet loss

## INFRASTRUCTURE

- Hosted in a commercial-grade cloud server environment that meets SOC 1®, SOC 2® and SOC 3® standards
- Superior availability, operating to 99.9% or greater
- Open APIs available to support application development

## SECURITY

- More than 175 security controls in place to protect your data
- Member of the Center for Internet Security® (CIS®)
- Enables compliance with security frameworks like ISO27002, HIPAA, NIST and more
- Earned Skyhigh's CloudTrust™ Program highest rating of Enterprise-Ready

## PART NUMBERS

## DIGI REMOTE MANAGER®

DIGI-RM-STD-1YR	Digi Remote Manager Standard — 1-year subscription
DIGI-RM-PRM-1YR	Digi Remote Manager Premier — 1-year subscription
DIGI-RM-PRM-3YR	Digi Remote Manager Premier — 3-year subscription
DIGI-RM-PRM-5YR	Digi Remote Manager Premier — 5-year subscription

PART NUMBERS	DIGI TX64 5G RAIL
TX64-R210	Digi TX64 5G Rail router — 5G / LTE-Advanced Pro Cat 20, dual Wi-Fi, UDR, global

PART NUMBERS	DIGI TX64 5G RAIL — PRIMARY RESPONDER
TX64-R210-PR	Digi TX64 5G Rail Primary Responder router — 5G / LTE-Advanced Pro Cat 20, dual Wi-Fi, UDR, global, FirstNet Trusted

PART NUMBERS	AVAILABLE ACCESSORIES*
76002108	Digi TX64 Rail power, M12 T-code female connector, 5 m
76002109	Digi TX64 Rail Ethernet to WR44 RR adapter cable

\*Sold separately, unless otherwise noted.



\*FirstNet®, FirstNet Trusted™ and FirstNet Ready™ are registered trademarks and service marks of the First Responder Network Authority.

**DIGI SERVICE AND SUPPORT** / You can purchase with confidence knowing that Digi is always available to serve you with expert technical support and our industry leading warranty. For detailed information visit [www.digi.com/support](http://www.digi.com/support).

© 2023 Digi International Inc. All rights reserved.  
All trademarks are the property of their respective owners.

91004416  
B1/323

**DIGI INTERNATIONAL WORLDWIDE HQ**  
877-912-3444 / 952-912-3444 / [www.digi.com](http://www.digi.com)

**DIGI INTERNATIONAL JAPAN**  
+81-3-5428-0261 / [www.digi-intl.co.jp](http://www.digi-intl.co.jp)

**DIGI INTERNATIONAL GERMANY**  
+49-89-540-428-0

**DIGI INTERNATIONAL SINGAPORE**  
+65-6213-5380

**DIGI INTERNATIONAL CHINA**  
+86-21-50492199 / [www.digi.com.cn](http://www.digi.com.cn)

