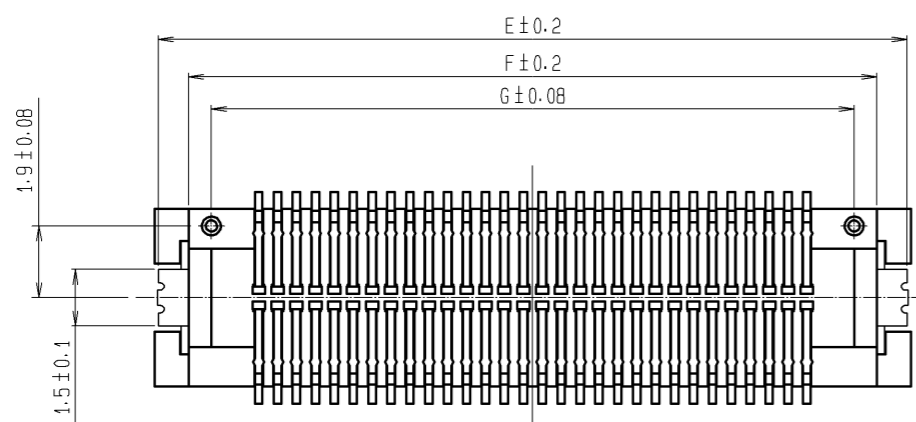
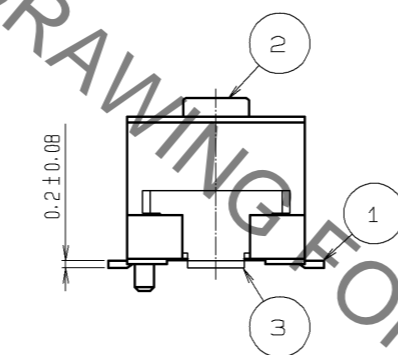
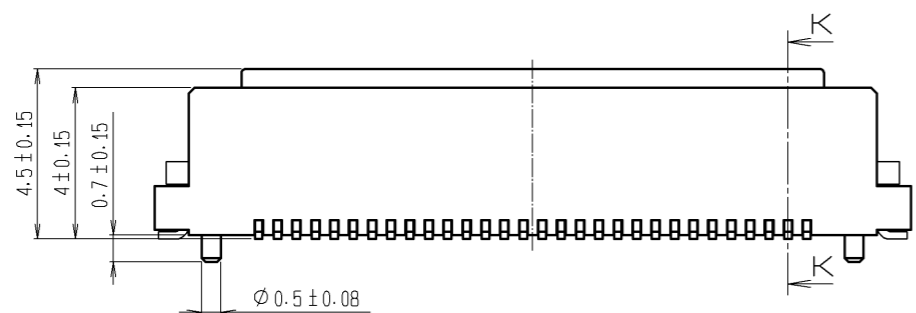
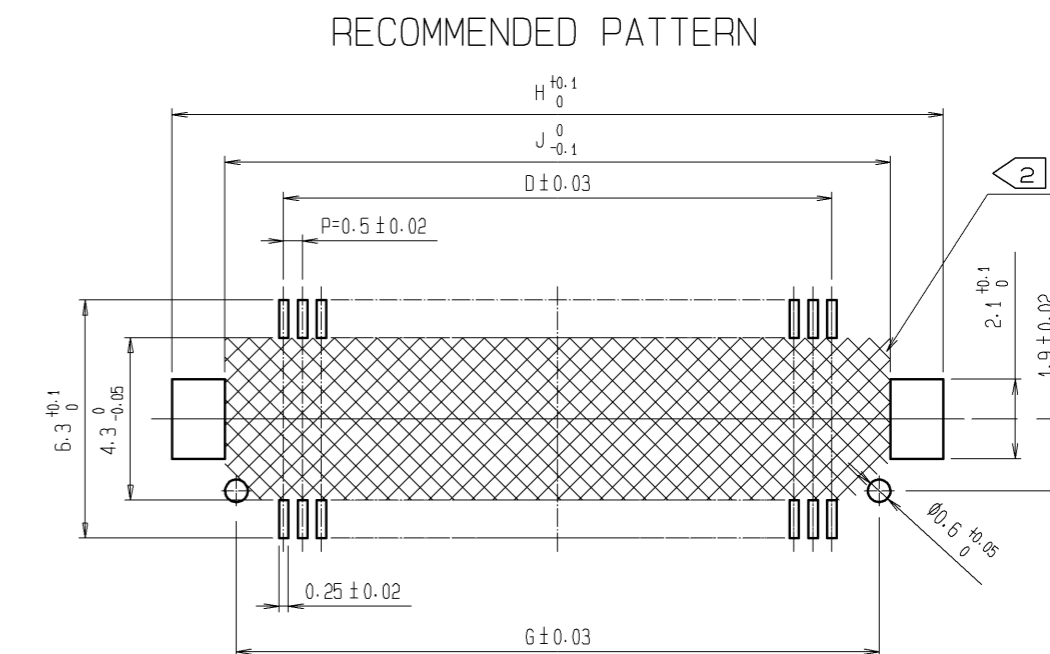
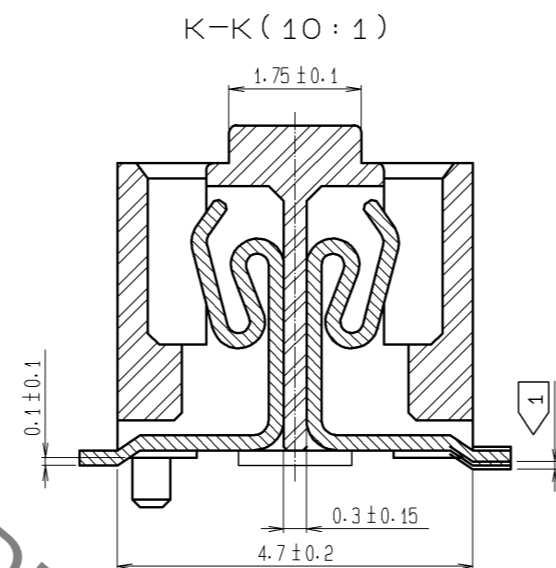
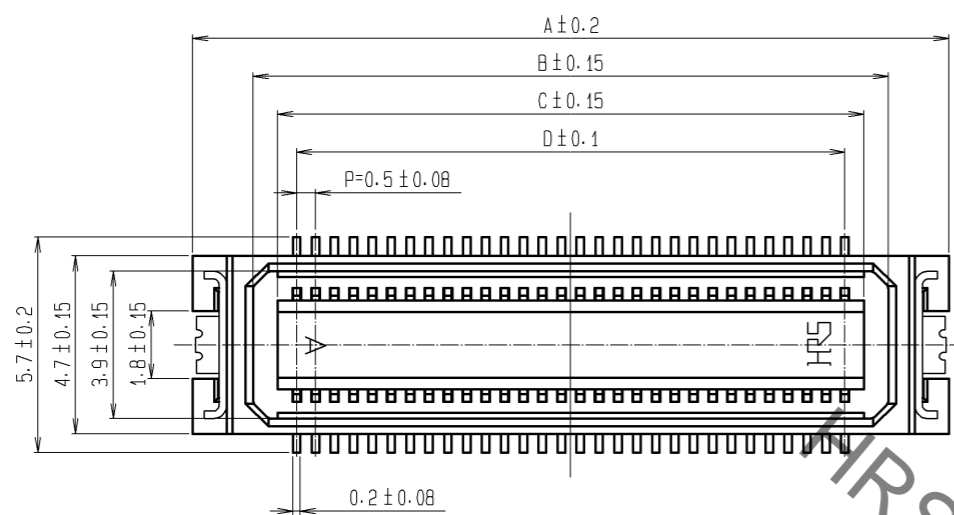


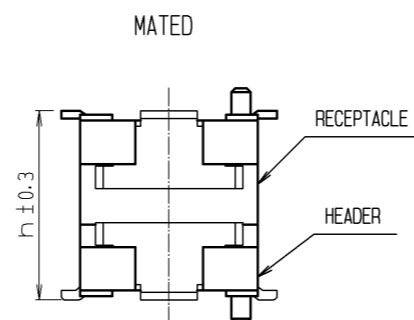
May.1.2023 Copyright 2023 HIROSE ELECTRIC CO., LTD. All Rights Reserved.
In case of consideration for using Automotive equipment / device which demand high reliability, kindly contact our sales window correspondents.



| CODE NO. | CONTACT | A | B | C | D | E | F | G | H | J |
|-----------------|---------|------|------|------|------|------|------|------|------|------|
| CL683-0042-7-57 | 20 | 10 | 6.8 | 5.5 | 4.5 | 9.8 | 8.2 | 7 | 10.4 | 7.6 |
| CL683-0043-0-57 | 30 | 12.5 | 9.3 | 8 | 7 | 12.3 | 10.7 | 9.5 | 12.9 | 10.1 |
| CL683-0044-2-57 | 40 | 15 | 11.8 | 10.5 | 9.5 | 14.8 | 13.2 | 12 | 15.4 | 12.6 |
| CL683-0045-5-57 | 50 | 17.5 | 14.3 | 13 | 12 | 17.3 | 15.7 | 14.5 | 17.9 | 15.1 |
| CL683-0046-8-57 | 60 | 20 | 16.8 | 15.5 | 14.5 | 19.8 | 18.2 | 17 | 20.4 | 17.6 |
| CL683-0047-0-57 | 70 | 22.5 | 19.3 | 18 | 17 | 22.3 | 20.7 | 19.5 | 22.9 | 20.1 |
| CL683-0048-3-57 | 80 | 25 | 21.8 | 20.5 | 19.5 | 24.8 | 23.2 | 22 | 25.4 | 22.6 |

NOTES 1 LEAD CO-PLANARITY INCLUDE REINFORCED METAL FITTINGS SHALL BE 0.1mm MAX.
2 WATCH NOT LET THE CONTACTS TOUCH THE SECTION ESPECIALLY WHEN THE PADS OF AREA NOT RESIST FINISHED.

| MATED HEIGHT(h) | | (mm) |
|-------------------------|-------------------------|------|
| HEADER NO. | RECEPTACLE NO. | |
| | DF17#(4.0)-*DS-0.5V(57) | |
| DF17#(2.0)-*DP-0.5V(57) | | 6 |
| DF17#(4.0)-*DP-0.5V(57) | | 8 |

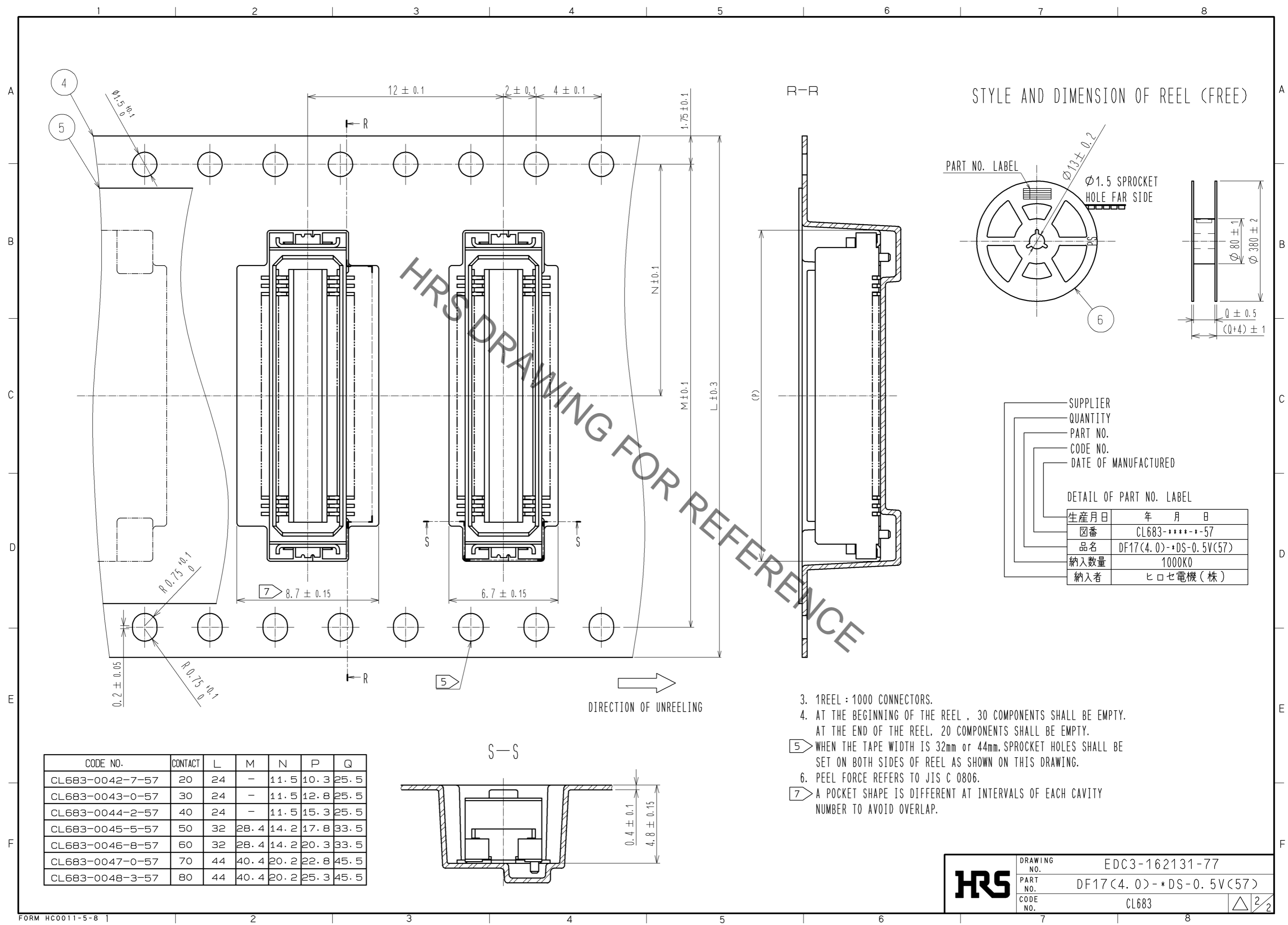


| NO. | MATERIAL | FINISH . REMARKS | NO. | MATERIAL | FINISH . REMARKS |
|-----|------------------|---|-----|-----------------|---|
| 2 | POLYAMIDE (PA6T) | WHITE BEIGE , UL94V-0 | 6 | PS | BLACK(PLASTIC REEL) |
| 1 | PHOSPHER BRONZE | CONTACT AREA : GOLD PLATED 0.1µm min LEAD AREA : TIN PLATED 1µm min UNDER PLATING : NICKEL PLATED 1µm min | 5 | POLYESTER | CLEAR (COVER TAPE) |
| | | | 4 | PS | CLEAR (EMBOSSD CARRIER TAPE) |
| | | | 3 | PHOSPHER BRONZE | TIN PLATED : 1µm min UNDER PLATING : NICKEL PLATED 1µm min |

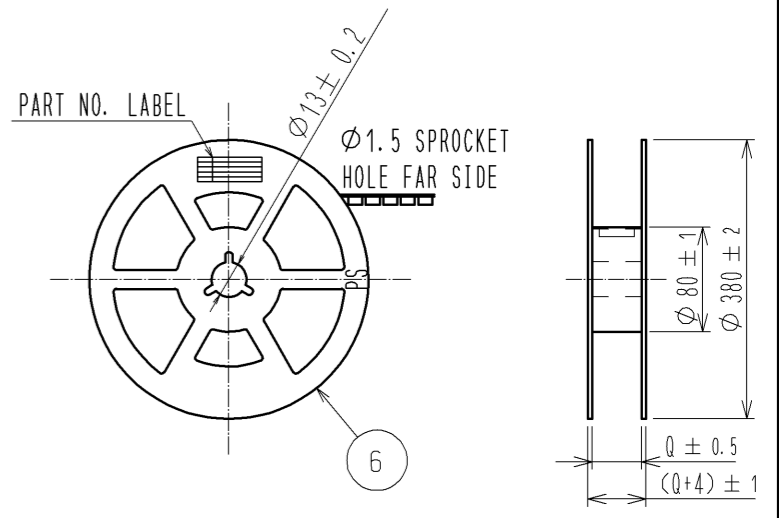
| UNITS | SCALE | COUNT | DESCRIPTION OF REVISIONS | DESIGNED | CHECKED | DATE |
|-------|-------|-------|--------------------------|----------|---------|------|
| mm | 5 : 1 | △ | | | | |

| | | | |
|------------------------|----------|-------------|------------------------|
| APPROVED : KH. IKEDA | 11.11.30 | DRAWING NO. | EDC3-162131-77 |
| CHECKED : TS. MIYAZAKI | 11.11.30 | PART NO. | DF17(4.0)-*DS-0.5V(57) |
| DESIGNED : YH. MICHIDA | 11.11.30 | CODE NO. | CL683 |
| DRAWN : YH. MICHIDA | 11.11.30 | | |

May.1.2023 Copyright 2023 HIROSE ELECTRIC CO., LTD. All Rights Reserved.
In case of consideration for using Automotive equipment / device which demand high reliability, kindly contact our sales window correspondents.



STYLE AND DIMENSION OF REEL (FREE)



| DETAIL OF PART NO. LABEL | |
|--------------------------|------------------------|
| 生産月日 | 年 月 日 |
| 図番 | CL683-****-57 |
| 品名 | DF17(4.0)-*DS-0.5V(57) |
| 納入数量 | 1000K0 |
| 納入者 | ヒロセ電機(株) |

| CODE NO. | CONTACT | L | M | N | P | Q |
|-----------------|---------|----|------|------|------|------|
| CL683-0042-7-57 | 20 | 24 | - | 11.5 | 10.3 | 25.5 |
| CL683-0043-0-57 | 30 | 24 | - | 11.5 | 12.8 | 25.5 |
| CL683-0044-2-57 | 40 | 24 | - | 11.5 | 15.3 | 25.5 |
| CL683-0045-5-57 | 50 | 32 | 28.4 | 14.2 | 17.8 | 33.5 |
| CL683-0046-8-57 | 60 | 32 | 28.4 | 14.2 | 20.3 | 33.5 |
| CL683-0047-0-57 | 70 | 44 | 40.4 | 20.2 | 22.8 | 45.5 |
| CL683-0048-3-57 | 80 | 44 | 40.4 | 20.2 | 25.3 | 45.5 |

- 1 REEL : 1000 CONNECTORS.
4. AT THE BEGINNING OF THE REEL , 30 COMPONENTS SHALL BE EMPTY.
AT THE END OF THE REEL, 20 COMPONENTS SHALL BE EMPTY.
- 5 WHEN THE TAPE WIDTH IS 32mm or 44mm, SPROCKET HOLES SHALL BE SET ON BOTH SIDES OF REEL AS SHOWN ON THIS DRAWING.
6. PEEL FORCE REFERS TO JIS C 0806.
- 7 A POCKET SHAPE IS DIFFERENT AT INTERVALS OF EACH CAVITY NUMBER TO AVOID OVERLAP.

HRS DRAWING NO. EDC3-162131-77
PART NO. DF17(4.0)-*DS-0.5V(57)
CODE NO. CL683