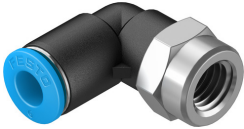


# Push-in L-fitting QSLF-1/8-6-B

Part number: 153274

FESTO



## Data sheet

Feature	Value
Size	Standard
Nominal width	4.2 mm
Mounting position	Any
Pack size	10
Structural design	Push-pull principle
Operating pressure for entire temperature range	-0.95 bar ... 6 bar
Temperature-dependent operating pressure	-0.95 bar ... 14 bar
Maritime classification	See certificate
Operating medium	Compressed air as per ISO 8573-1:2010 [7:-:-] Water as per manufacturer's declaration at <a href="http://www.festo.com">www.festo.com</a>
Information on operating and pilot media	Operation with oil lubrication possible
Corrosion resistance class (CRC)	1 - Low corrosion stress
LABS (PWIS) conformity	VDMA24364-B1/B2-L
Ambient temperature	-10 °C ... 80 °C
Product weight	15 g
Pneumatic connection 1	Internal thread G1/8
Pneumatic connection 2	for pneumatic tubing outside diameter 6 mm
Releasing ring color	Blue
Note on materials	RoHS-compliant
Housing material	PBT
Releasing ring material	POM
Material of tubing seal	NBR
Material of tube retaining claw	High-alloy stainless steel