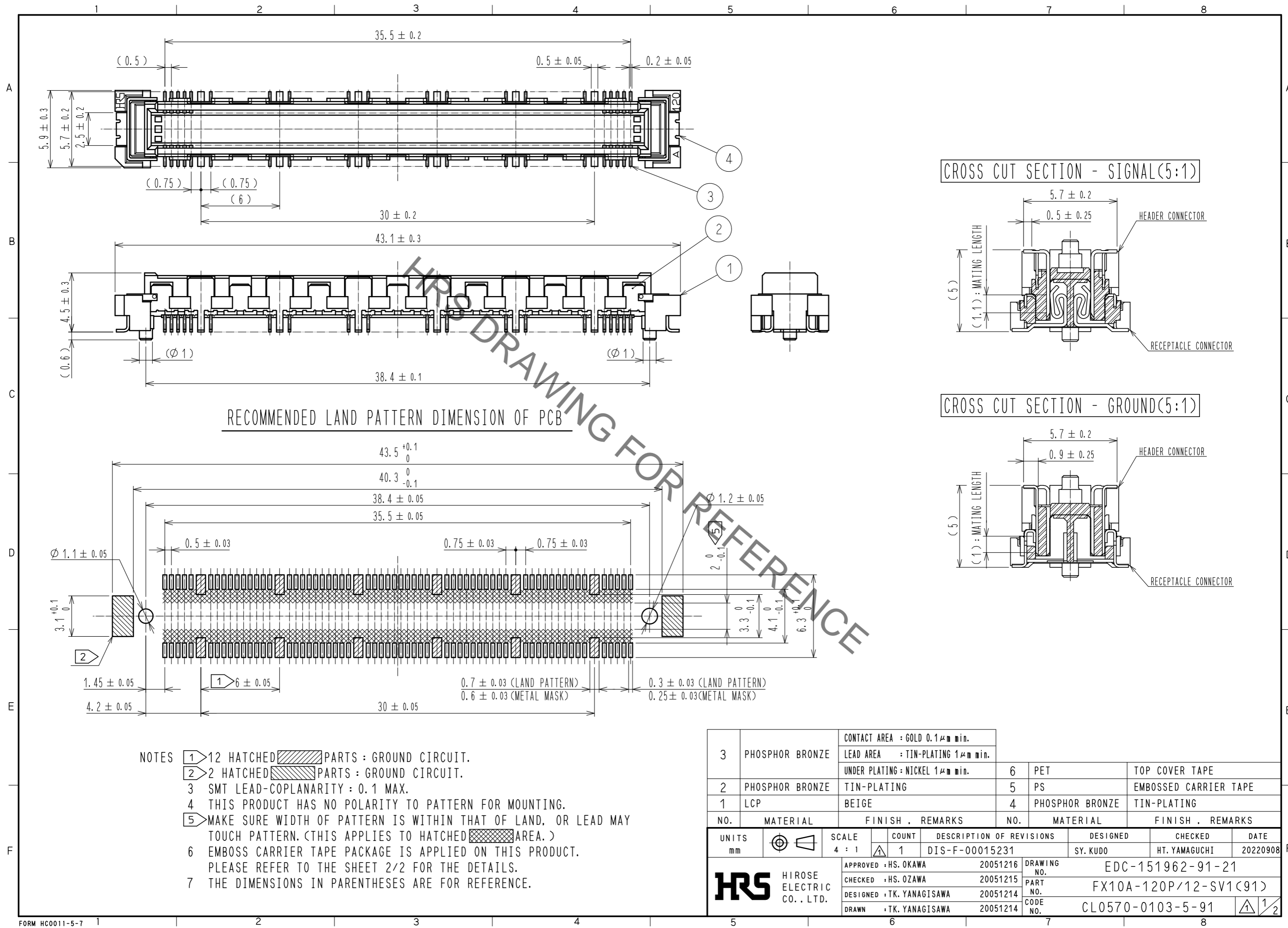


Apr.1.2023 Copyright 2023 HIROSE ELECTRIC CO., LTD. All Rights Reserved.  
 In case of consideration for using Automotive equipment / device which demand high reliability, kindly contact our sales window correspondents.



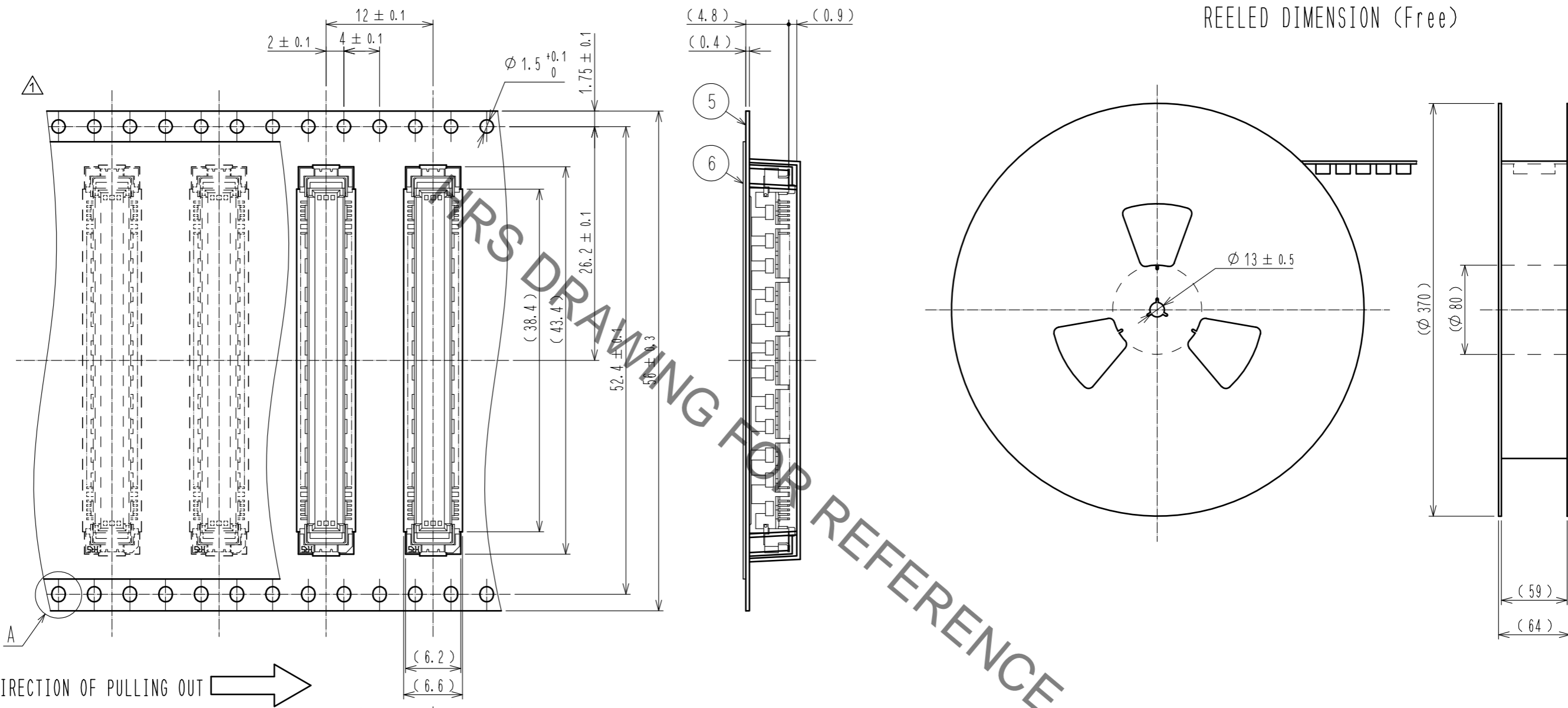
RECOMMENDED LAND PATTERN DIMENSION OF PCB

- NOTES
- ① 12 HATCHED PARTS : GROUND CIRCUIT.
  - ② 2 HATCHED PARTS : GROUND CIRCUIT.
  - 3 SMT LEAD-COPLANARITY : 0.1 MAX.
  - 4 THIS PRODUCT HAS NO POLARITY TO PATTERN FOR MOUNTING.
  - ⑤ MAKE SURE WIDTH OF PATTERN IS WITHIN THAT OF LAND, OR LEAD MAY TOUCH PATTERN. (THIS APPLIES TO HATCHED AREA.)
  - 6 EMBOSSED CARRIER TAPE PACKAGE IS APPLIED ON THIS PRODUCT. PLEASE REFER TO THE SHEET 2/2 FOR THE DETAILS.
  - 7 THE DIMENSIONS IN PARENTHESES ARE FOR REFERENCE.

3	PHOSPHOR BRONZE	CONTACT AREA : GOLD 0.1 $\mu$ m min.	6	PET	TOP COVER TAPE
		LEAD AREA : TIN-PLATING 1 $\mu$ m min.			
		UNDER PLATING : NICKEL 1 $\mu$ m min.			
2	PHOSPHOR BRONZE	TIN-PLATING	5	PS	EMBOSSED CARRIER TAPE
1	LCP	BEIGE	4	PHOSPHOR BRONZE	TIN-PLATING
NO.	MATERIAL	FINISH . REMARKS	NO.	MATERIAL	FINISH . REMARKS
UNITS mm		SCALE 4 : 1	COUNT 1	DESCRIPTION OF REVISIONS DIS-F-00015231	
APPROVED : HS. OKAWA 20051216			DESIGNED SY. KUDO	CHECKED HT. YAMAGUCHI	
CHECKED : HS. OZAWA 20051215			DATE 20220908		
DESIGNED : TK. YANAGISAWA 20051214			DRAWING NO. EDC-151962-91-21		
DRAWN : TK. YANAGISAWA 20051214			PART NO. FX10A-120P/12-SV1(91)		
HRS HIROSE ELECTRIC CO., LTD.			CODE NO. CL0570-0103-5-91		

Apr.1.2023 Copyright 2023 HIROSE ELECTRIC CO., LTD. All Rights Reserved.  
 In case of consideration for using Automotive equipment / device which demand high reliability, kindly contact our sales window correspondents.

# DRAWING FOR PACKING(2:1)



REELED DIMENSION (Free)

- NOTES 8 1 REEL : 1000 CONNECTORS.  
 9 MINIMUM 10 COMPARTMENTS FROM BOTH REEL ENDS REMAIN EMPTY.  
 10 THIS PRODUCT HAS NO POLARITY TO TAPE AND REEL PACKAGING.  
 11 THE DIMENSIONS IN PARENTHESES ARE FOR REFERENCE.

<b>HRS</b>	DRAWING NO.	EDC-151962-91-21
	PART NO.	FX10A-120P/12-SV1(91)
	CODE NO.	CL0570-0103-5-91
		$\triangle$ 2/2