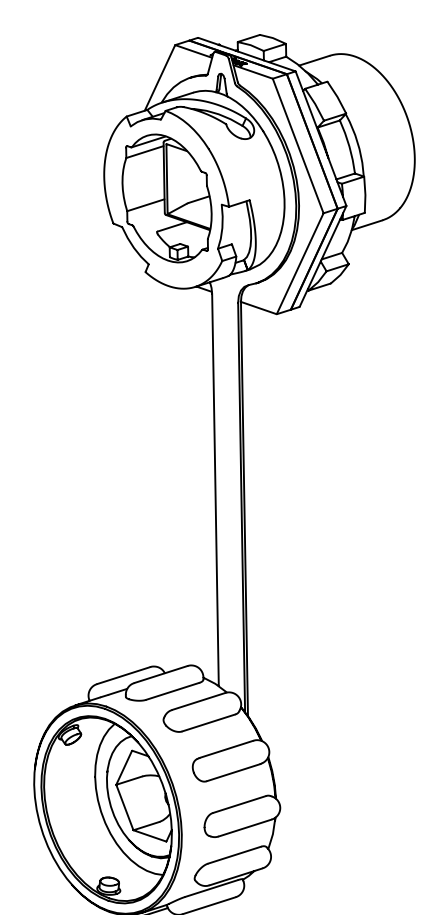
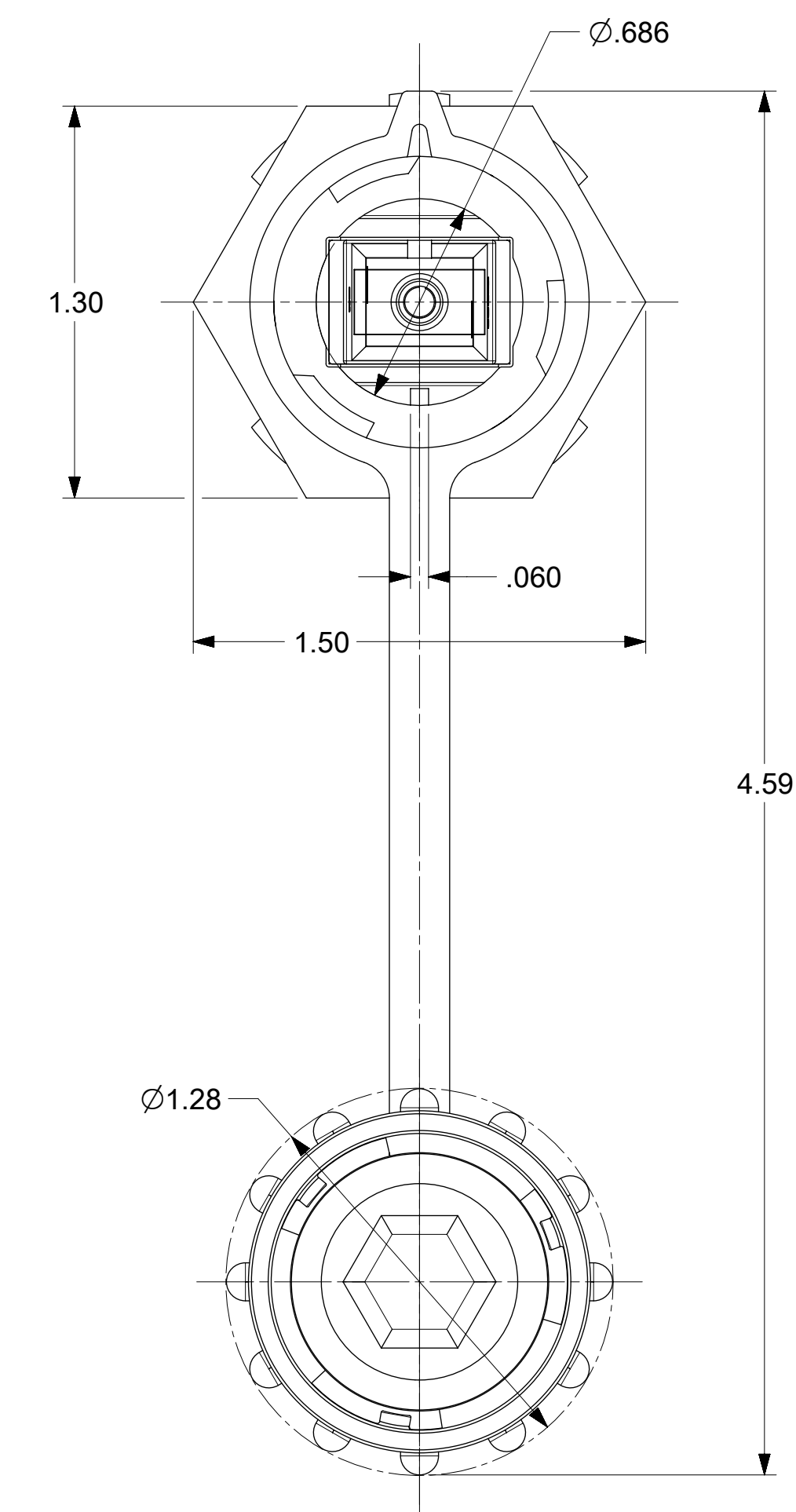
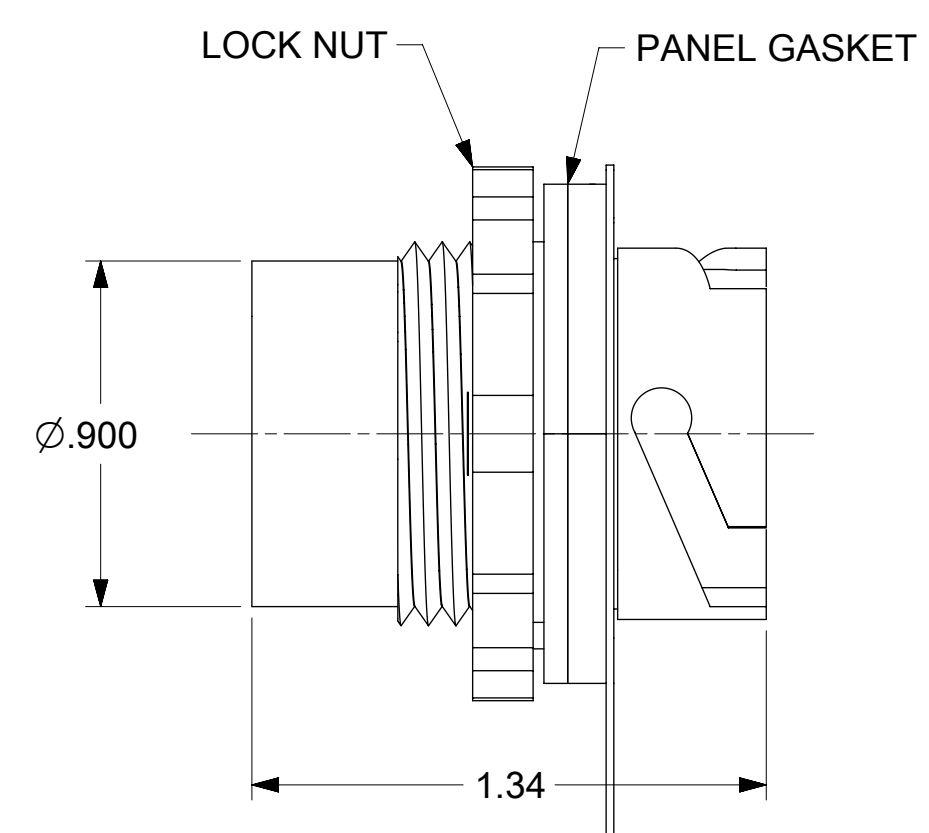
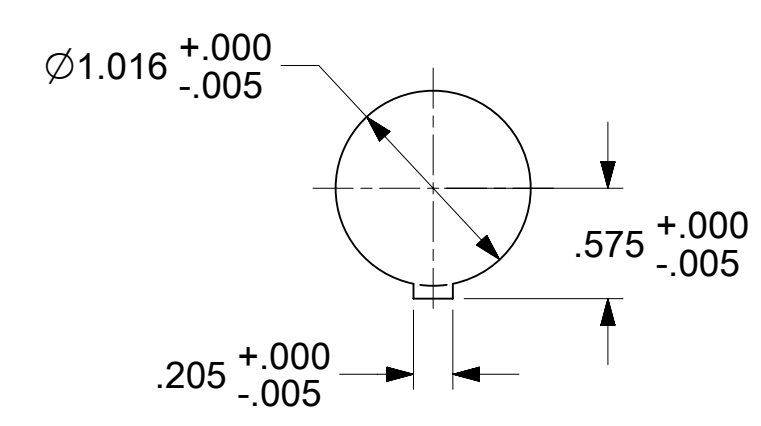


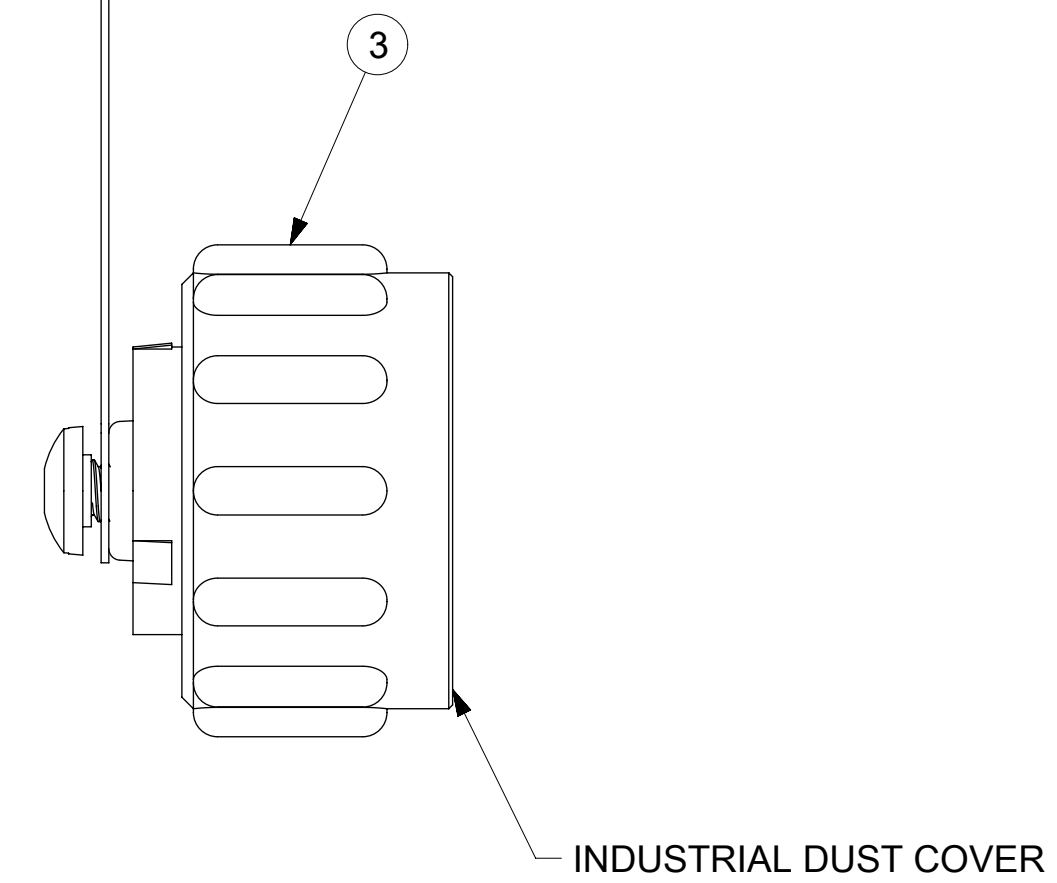
ADAPTER P/N	ADAPTER TYPE
1060592030	SINGLE MODE
1060592032	APC



ISOMETRIC VIEWS  
SCALE 1:1



RECOMMENDED MOUNTING CUTOUT  
SCALE: 1:1



NOTES:  
1. ALL DIMENSIONS ARE FOR REFERENCE ONLY.  
2. SC ADAPTER DUST CAPS ARE NOT SHOWN.

THIS DRAWING CONTAINS INFORMATION THAT IS PROPRIETARY TO MOLEX ELECTRONIC TECHNOLOGIES, LLC AND SHOULD NOT BE USED WITHOUT WRITTEN PERMISSION									
DIMENSION UNITS		SCALE		CURRENT REV DESC: REMOVED OBSOLETE PART NUMBER AS PER PCN #511691				<b>molex</b>	
INCH		2:1							
GENERAL TOLERANCES (UNLESS SPECIFIED)				EC NO: 737858		2023/02/13		SC INDUSTRIAL ADAPTER	
		MM	INCH	DRWN: SANTHN		2023/02/24			
4 PLACES		±	±	CHK'D: GGA		2023/02/24		PRODUCT CUSTOMER DRAWING	
3 PLACES		±	±	APPR: GGA		2023/02/24			
2 PLACES		±	±	INITIAL REVISION:				DOCUMENT NUMBER	
1 PLACE		±	±	DRWN: D.B		09/07/2006			
0 PLACES		±	±	APPR: I.G		09/07/2006		SD-106059-203X	
ANGULAR TOL		± 0.5 °		THIRD ANGLE PROJECTION		DRAWING		SERIES	
DRAFT WHERE APPLICABLE MUST REMAIN WITHIN DIMENSIONS				C-SIZE		106059		MATERIAL NUMBER	
								CUSTOMER	
								GENERAL MARKET	
								SHEET NUMBER	
								1 OF 1	

DOCUMENT STATUS	P1	RELEASE DATE	2023/02/24	09:13:37
-----------------	----	--------------	------------	----------