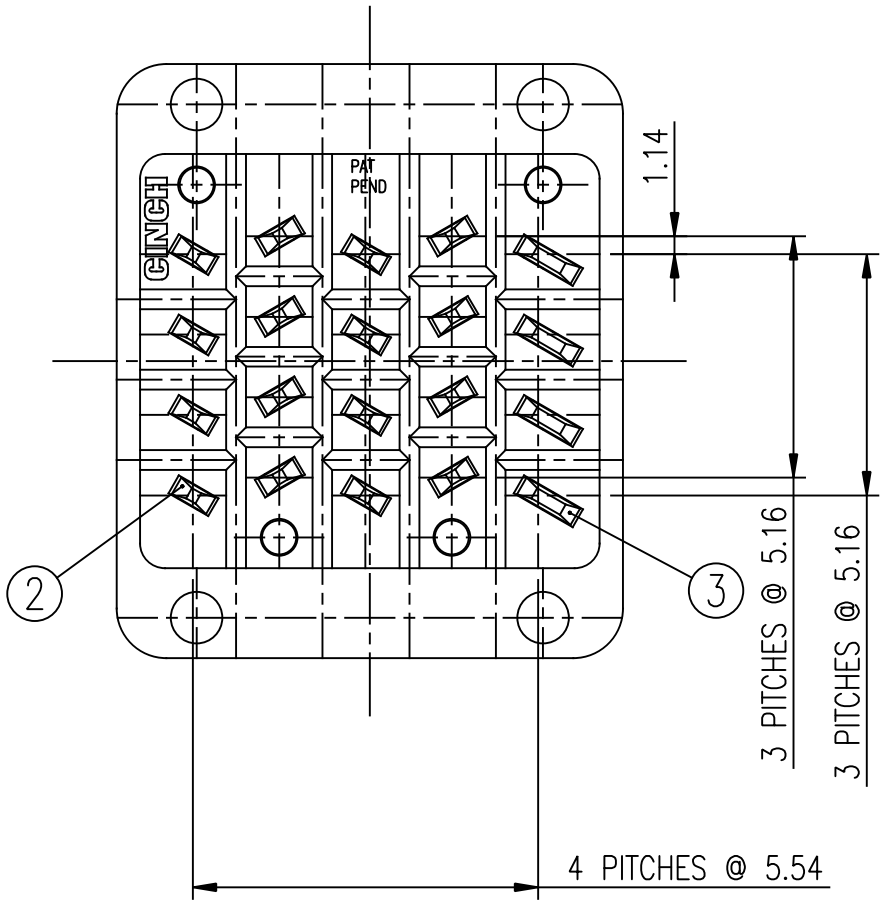
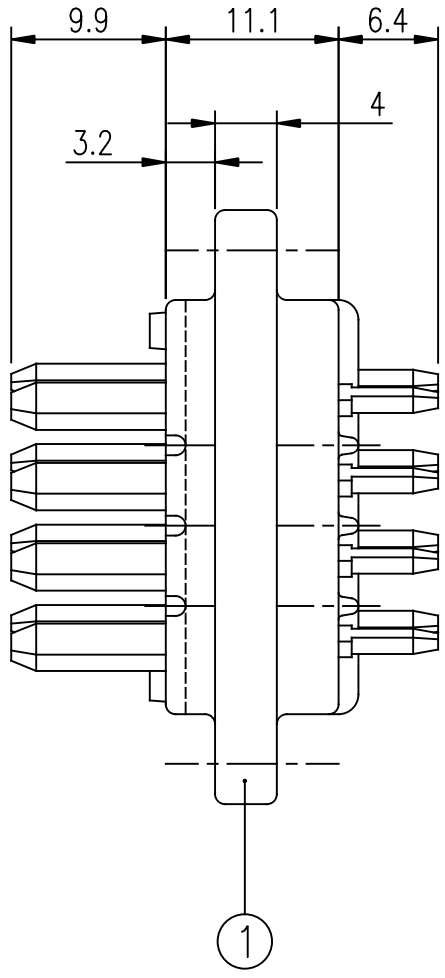
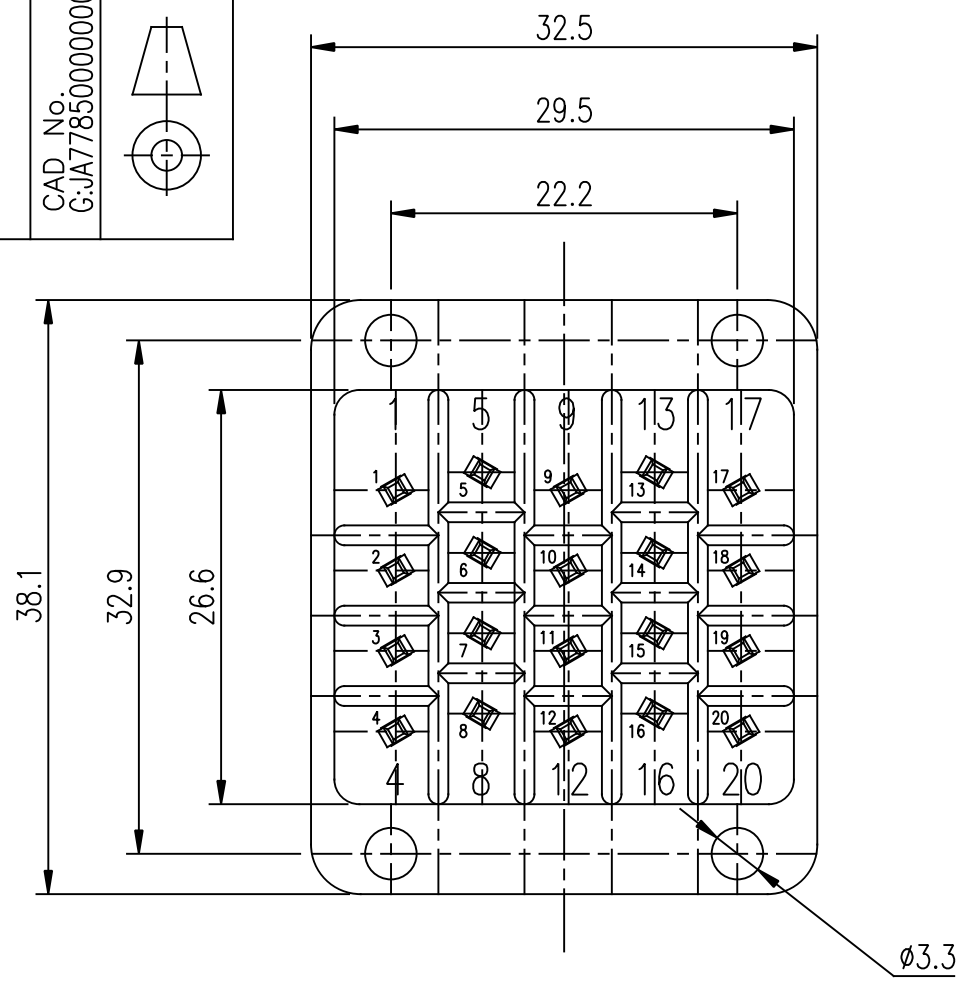


1	2	3	4	5	6	7
CINCH Connectors Ltd. WORKSOP, ENGLAND						
RELEVANT SPEC. 77850 00 000 000 000 SHEET 1 OF 1						
CAD No. G:JA7785000000000						
IF IN DOUBT - ASK ALL DIMENSIONS ARE IN mm						

CUSTOMER DRAWING ONLY.



NOTES:

1. ALL PINS TO BE STAKED IN POSITION AS SHOWN.
2. ALL DIMENSIONS ARE REFERENCE ONLY UNLESS STATED OTHERWISE.

THIS DRAWING IS COPYRIGHT AND IS ISSUED ON CONDITION IT IS NOT COPIED, REPRODUCED OR DISCLOSED TO A THIRD PARTY WITHOUT THE CONSENT IN WRITING OF CINCH CONNECTORS LTD. ATTENTION IS DRAWN TO THE FACT THAT THE ARTICLE DISCLOSED MAY BE COVERED BY BRITISH OR FOREIGN PATENTS, GRANTED OR PENDING OR REGISTERED DESIGN.

TITLE J-TYPE		DATE 06.06.07		SCALE 2:1		CHD	
GENERAL TOLERANCE		DRN. RMUSCROFT		MATERIAL SPEC.		APP'D	
RAW MATERIAL		FINISHED HARDNESS		FINISH TREATMENT		FINISHED COLOUR	
20 WAY PLUG CONNECTOR ASSEMBLY		CUST. ISS. 06.06.07		MOD No. 4		No. OFF 1	
DESCRIPTION		FINISH		No. OFF		No. OFF	
CONTACT		BRIGHT TIN		4			
CONTACT		BRIGHT TIN		16			
20W INSULATOR		G.F. POLYESTER		1			
I <sub>T</sub> E <sub>M</sub>							
CODE							