

Product Specifications



Core type:

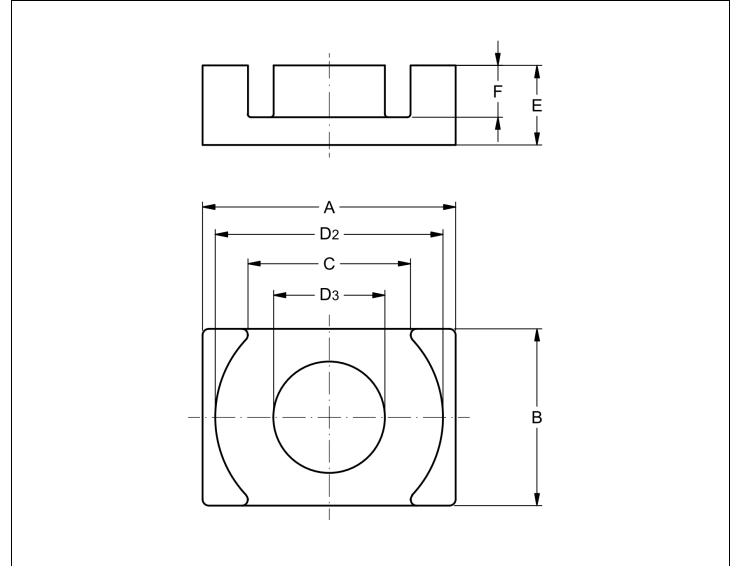
EQ25

Selling unit:

PCS

Product dimensions (mm): EQ25

	Nom	Tol +	Tol -	Max	Min
A	25.00	0.40	0.40	25.40	24.60
B	18.00	0.30	0.30	18.30	17.70
C	15.20	0.70	0.70	15.90	14.50
D2	22.00	0.40	0.40	22.40	21.60
D3	11.00	0.20	0.20	11.20	10.80
E	8.00	0.10	0.10	8.10	7.90
F	5.15	0.15	0.15	5.30	5.00



Effective parameters

Effective area	Minimum area	Effective length	Effective volume	Core factor
$A_e = 100 \text{ [mm}^2\text{]}$	$A_{min} = 95 \text{ [mm}^2\text{]}$	$L_e = 41.4 \text{ [mm]}$	$V_e = 4145 \text{ [mm}^3\text{]}$	$C_1 = 0.414 \text{ [mm}^{-1}\text{]}$

Inductance factor

Material	Value	Tol +	Tol -	Measuring conditions			Unit
3C95	5710	25%	25%	10 kHz	< 0.1 mT	25°C	nH/turns ²
3C96	4400	25%	25%	10 kHz	< 0.1 mT	25°C	nH/turns ²
3F36	3300	25%	25%	10 kHz	< 0.1 mT	25°C	nH/turns ²
3F46	2100	25%	25%	10 kHz	< 0.1 mT	25°C	nH/turns ²

Power loss

Material	Symbol	Value	Measuring conditions			Unit
3C95	Pv	< 2	100 kHz	200 mT	100°C	W/set
3C95	Pv	< 2.2	100 kHz	200 mT	25°C	W/set
3C96	Pv	< 1.9	100 kHz	200 mT	100°C	W/set
3C96	Pv	< 0.75	400 kHz	50 mT	100°C	W/set
3F36	Pv	< 0.62	500 kHz	50 mT	100°C	W/set
3F36	Pv	< 4.8	500 kHz	100 mT	100°C	W/set
3F46	Pv	< 2.1	1000 kHz	50 mT	100°C	W/set
3F46	Pv	< 1.3	3000 kHz	10 mT	100°C	W/set

Bsat

Material	Symbol	Value	Measuring conditions			Unit
3C95	Bsat	> 330	10 kHz	250 A/m	100°C	mT

Product Specifications



Core type:

EQ25

Selling unit:

PCS

Bsat

Material	Symbol	Value	Measuring conditions			Unit
3C96	Bsat	> 340	10 kHz	250 A/m	100°C	mT
3F36	Bsat	> 320	10 kHz	250 A/m	100°C	mT
3F46	Bsat	> 330	10 kHz	250 A/m	100°C	mT