

THIS DRAWING IS UNPUBLISHED.

RELEASED FOR PUBLICATION

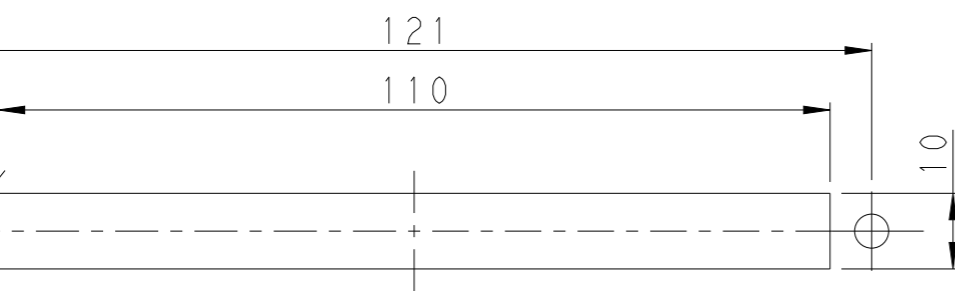
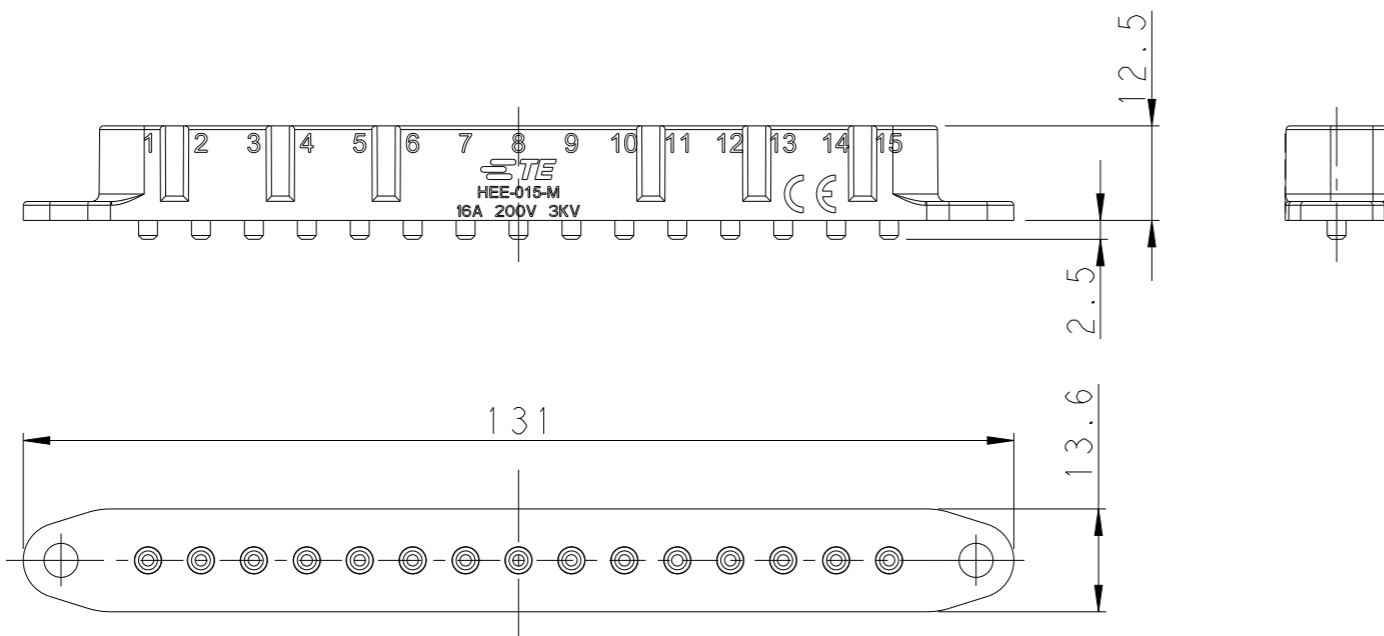
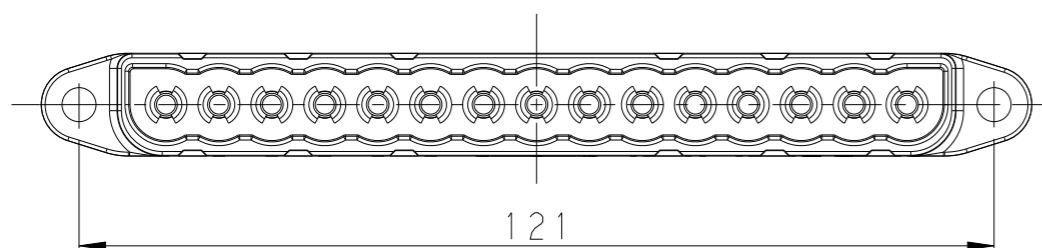
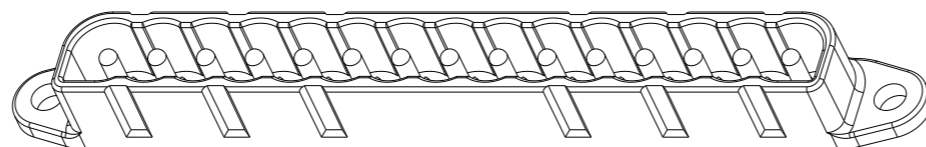
20

© COPYRIGHT 20 BY -

ALL RIGHTS RESERVED.

REVISIONS

P	LTR	DESCRIPTION	DATE	DWN	APVD
	A	INITIAL RELEASE	10MAR2015	DL	CW
	B	ECR-21-108559	06AUG2021	BS	CW



PANEL CUT OUT FOR INSERT FOR USING WITHOUT HOODS/HOUSINGS

NOTES:

- TECHNICAL CHARACTERISTICS:  
 INSULATION MATERIAL: PA  
 RATED VOLTAGE: 200 V  
 RATED CURRENT: 16 A  
 INSULATION RESISTANCE:  $\geq 400M\Omega$   
 RATED IMPULSE VOLTAGE: 3 KV  
 FLAMMABILITY: UL94V-0  
 MATING CYCLES: 200 FOR SILVER PLATED  
 500 FOR GOLD PLATED  
 WIRE RANGE: 1.5 mm<sup>2</sup> (16 AWG)  
 CONTACT TYPE: SOLDERING

注释:

- 技术参数:  
 绝缘材料: PA  
 额定电压: 200V  
 额定电流: 16A  
 绝缘电阻:  $\geq 400M\Omega$   
 额定脉冲电压: 3 KV  
 阻燃等级: UL94V-0  
 插拔次数: 镀银端子: 200次  
 镀金端子: 500次  
 接线范围: 1.5 mm<sup>2</sup> (16 AWG)  
 接线类型: 焊接 (电路焊接形式)

THIS DRAWING IS A CONTROLLED DOCUMENT.

DIMENSIONS:	TOLERANCES UNLESS OTHERWISE SPECIFIED:
mm	
	0 PLC ±-
	1 PLC ±-
	2 PLC ±-
	3 PLC ±-
	4 PLC ±-
	ANGLES ±-
MATERIAL	FINISH
-	-
-	-

DWN	10MAR2015
DAVID LI	
CHK	10MAR2015
CHRIS WANG	
APVD	10MAR2015
XU XIANG	
PRODUCT SPEC	
-	
APPLICATION SPEC	
-	
WEIGHT	-
Customer Drawing	

HEE-015-M		T2800152101-000	
DESCRIPTION		PART NUMBER	
<b>STE</b> TE Connectivity			
NAME: HEE-015-M			
SIZE	CAGE CODE	DRAWING NO	RESTRICTED TO
A3	-	©-T2800152101000	-
SCALE		SHEET	REV
1:1		1 OF 1	B