

6

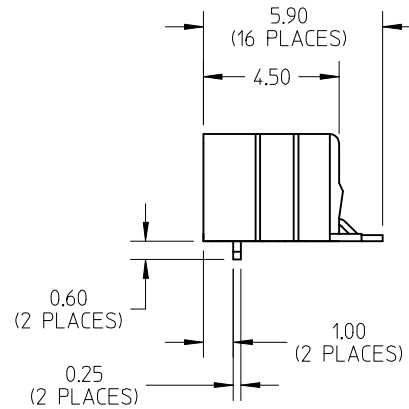
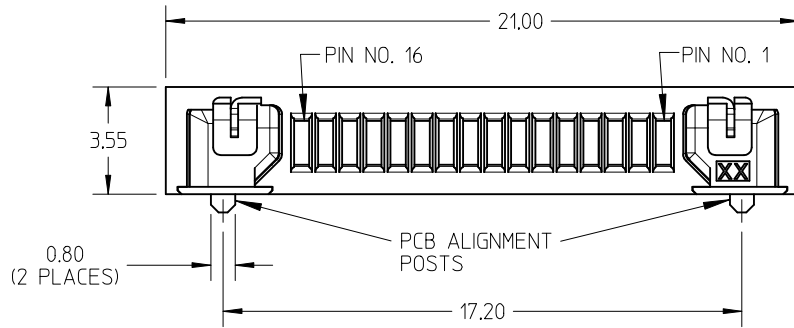
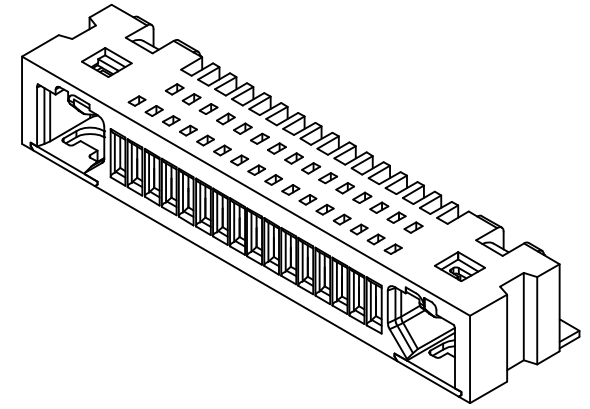
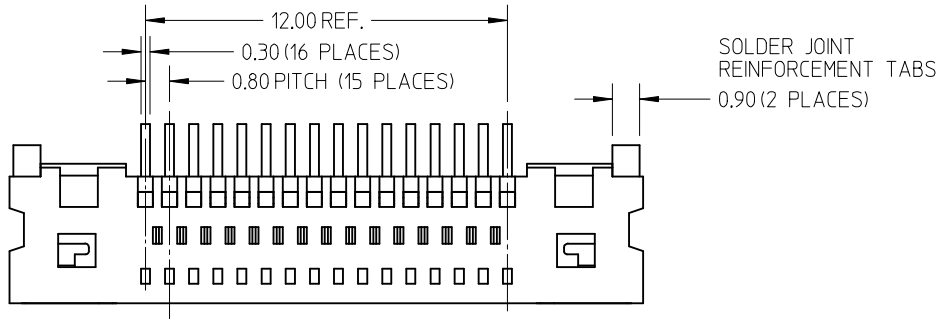
5

4

3

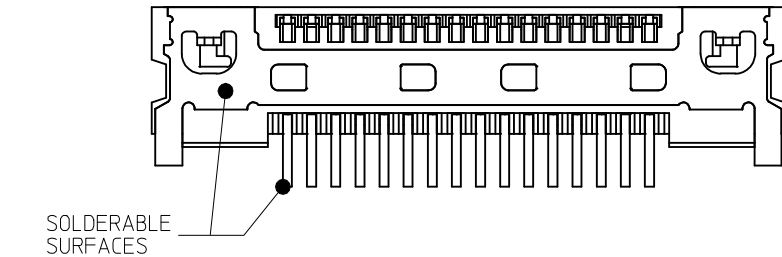
2

1



NOTES:

1. MATERIALS: HOUSING - GLASS-REINFORCED THERMOPLASTIC, UL94V-0, COLOR: BLACK.
TERMINALS - COPPER ALLOY
2. FINISHES: CONTACT SURFACES - SELECTIVE GOLD OVER PALLADIUM-NICKEL OVER NICKEL
SOLDERING SURFACES - TIN OVER NICKEL
3. PRODUCT SPECIFICATION: PS-44828-001
APPLICATION SPECIFICATION: AS-44828-001
4. CO-PLANARITY OF THE SOLDER TAILS TO BE 0.10 MAXIMUM.
5. PACKAGING: EMBOSSED TAPE AND REEL, PACKAGING SPECIFICATION PK-44828-001.



448281162	16 CIRCUIT WITH PCB ALIGNMENT POST.	1000
MATERIAL NO.S	DESCRIPTION	PARTS PER REEL

UPDATE GEOMETRY EC NO: UCP2015-4283 DRWN:DMORGAN 2015/04/16 CHKD:BBARKER 2015/04/16 APPR:SMILLER 2015/04/27 D REV	QUALITY SYMBOLS 	GENERAL TOLERANCES (UNLESS SPECIFIED)		DIMENSION STYLE MM ONLY	SCALE 4:1	DESIGN UNITS METRIC	THIRD ANGLE PROJECTION	
			mm	INCH	DRAWN BY MSIMMEL	DATE 2002/09/25	TITLE 0.8MM HANDYLINK SMT RECEPTACLE 16 CIRCUIT	
		4 PLACES	± ---	± ---	CHECKED BY JCOMERC1	DATE 2002/09/26		
		3 PLACES	± ---	± ---	APPROVED BY SMILLER	DATE 2010/03/29		
			ANGULAR ±1/2°		MATERIAL NO.	DOCUMENT NO.	SHEET NO.	
			DRAFT WHERE APPLICABLE MUST REMAIN WITHIN DIMENSIONS		SEE TABLE	SD-44828-001	1 OF 2	
				SIZE A	THIS DRAWING CONTAINS INFORMATION THAT IS PROPRIETARY TO MOLEX INCORPORATED AND SHOULD NOT BE USED WITHOUT WRITTEN PERMISSION			

5

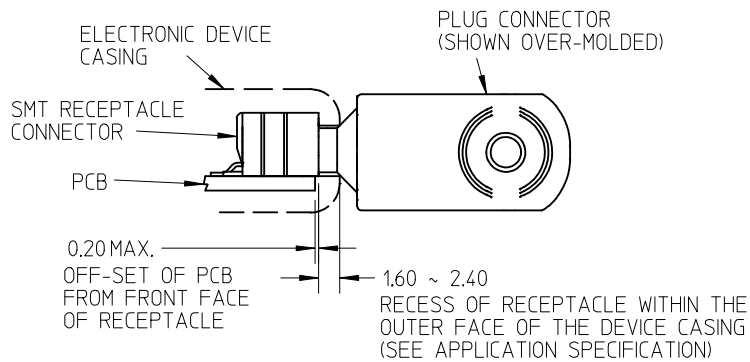
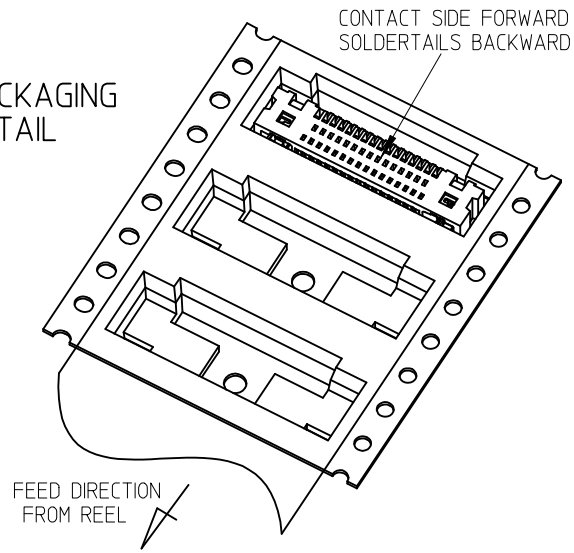
4

3

2

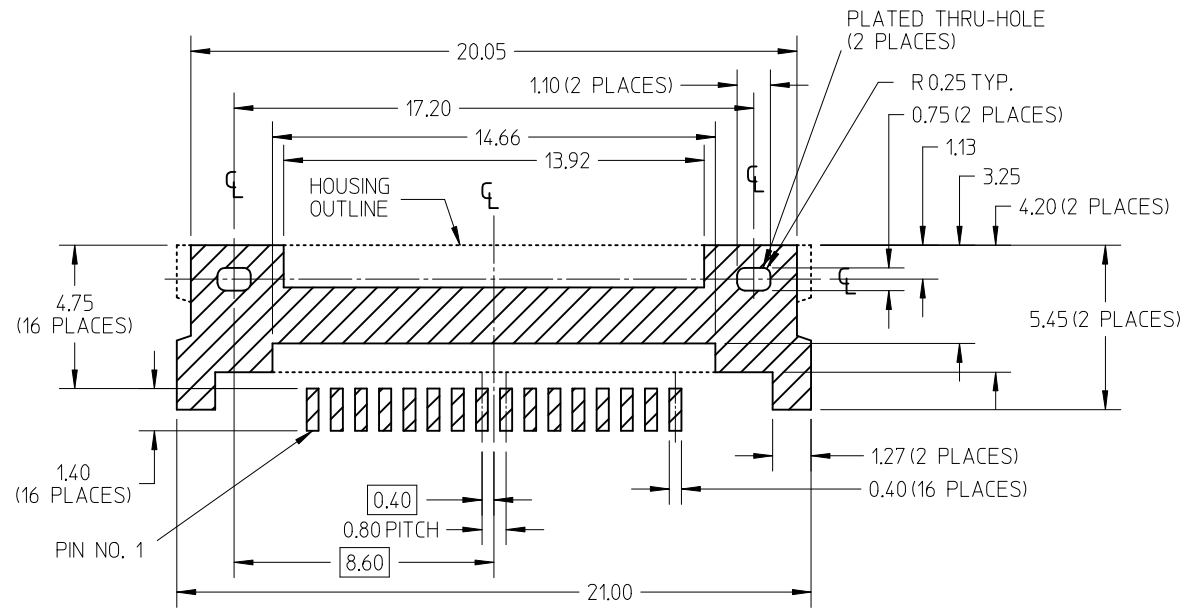
1

**PACKAGING
DETAIL**



**RECOMMENDATIONS FOR CONFIGURATION
OF MATED CONNECTORS**

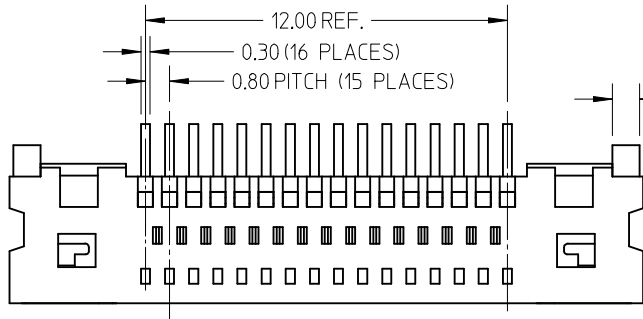
IMPORTANT: PLEASE REFER TO MOLEX APPLICATION SPECIFICATION AS-44828-001 FOR DETAILED DESIGN LAYOUT AND MATING REQUIREMENTS



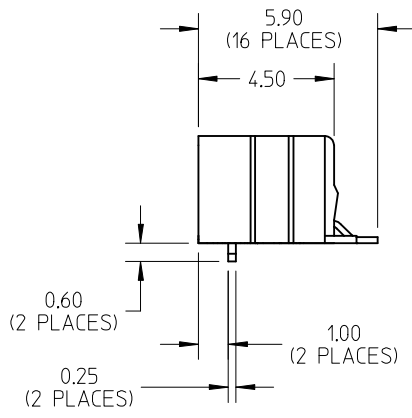
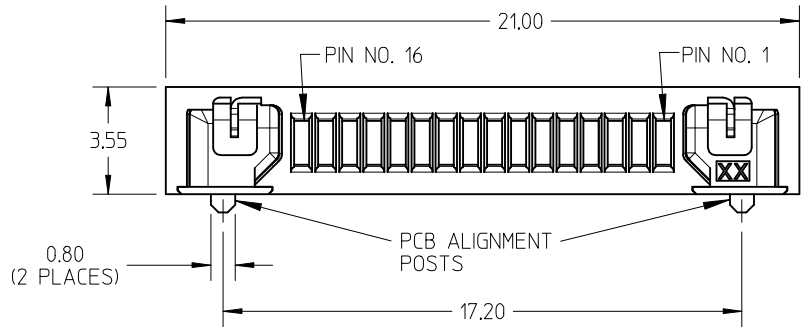
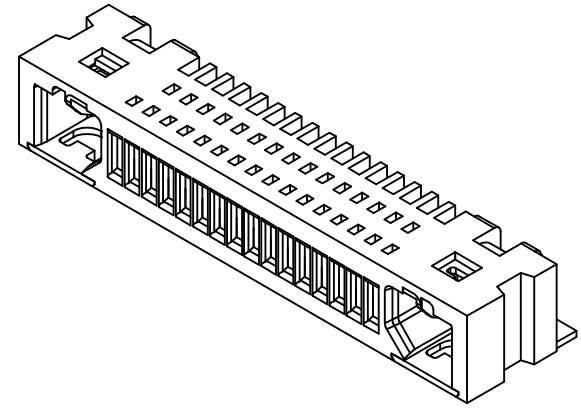
RECOMMENDED PCB PAD LAYOUT

NOTE: ALL DIMENSIONS TO BE SYMMETRIC ABOUT THE HOUSING CENTERLINE WITHIN 0.10

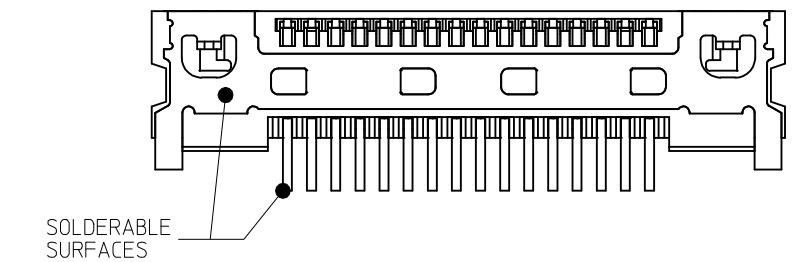
SEE SHEET 1 EC NO: UCP2015-4283 DRWN:DMORGAN 2015/04/16 CHKD:BBARKER 2015/04/16 APPR:SMILLER 2015/04/27	QUALITY SYMBOLS ≡=0 ≡=0 ≡=0	GENERAL TOLERANCES (UNLESS SPECIFIED)		DIMENSION STYLE MM ONLY		SCALE 4:1	DESIGN UNITS METRIC	THIRD ANGLE PROJECTION	
			mm	INCH	DRAWN BY MSIMMEL	DATE 2002/09/25	TITLE 0.8MM HANDYLINK SMT RECEPTACLE 16 CIRCUIT		
		4 PLACES	± ---	± ---	CHECKED BY JCOMERC I	DATE 2002/09/26			
		3 PLACES	± ---	± ---	APPROVED BY SMILLER	DATE 2010/03/29	molex	DOCUMENT NO. SD-44828-001	SHEET NO. 2 OF 2
		2 PLACES	± 0.10	± ---	SEE TABLE				
1 PLACE	± 0.10	± ---	ANGULAR ±1/2°		DRAFT WHERE APPLICABLE MUST REMAIN WITHIN DIMENSIONS		THIS DRAWING CONTAINS INFORMATION THAT IS PROPRIETARY TO MOLEX INCORPORATED AND SHOULD NOT BE USED WITHOUT WRITTEN PERMISSION		
0 PLACE	±	±							



SOLDER JOINT
REINFORCEMENT TABS
0.90 (2 PLACES)



- NOTES:
1. MATERIALS: HOUSING - GLASS-REINFORCED THERMOPLASTIC, UL94V-0, COLOR: BLACK.
TERMINALS - COPPER ALLOY
 2. FINISHES: CONTACT SURFACES - SELECTIVE GOLD OVER PALLADIUM-NICKEL OVER NICKEL
SOLDERING SURFACES - TIN OVER NICKEL
 3. PRODUCT SPECIFICATION: PS-44828-001
APPLICATION SPECIFICATION: AS-44828-001
 4. CO-PLANARITY OF THE SOLDER TAILS TO BE 0.10 MAXIMUM.
 5. PACKAGING: EMBOSSED TAPE AND REEL, PACKAGING SPECIFICATION PK-44828-001.



448281162	16 CIRCUIT WITH PCB ALIGNMENT POST.	1000
MATERIAL NO.S	DESCRIPTION	PARTS PER REEL

UPDATE GEOMETRY
EC NO: UCP2015-4283
DRWN:DMORGAN 2015/04/16
CHKD:BBARKER 2015/04/16
APPR:SMILLER 2015/04/27

QUALITY SYMBOLS

GENERAL TOLERANCES (UNLESS SPECIFIED)

	mm	INCH
4 PLACES	± ---	± ---
3 PLACES	± ---	± ---
2 PLACES	± 0.10	± ---
1 PLACE	± 0.10	± ---
0 PLACE	±	±

ANGULAR ±1/2°
DRAFT WHERE APPLICABLE MUST REMAIN WITHIN DIMENSIONS

DIMENSION STYLE
MM ONLY

DRAWN BY	DATE
MSIMMEL	2002/09/25
CHECKED BY	DATE
JCOMERC I	2002/09/26
APPROVED BY	DATE
SMILLER	2010/03/29

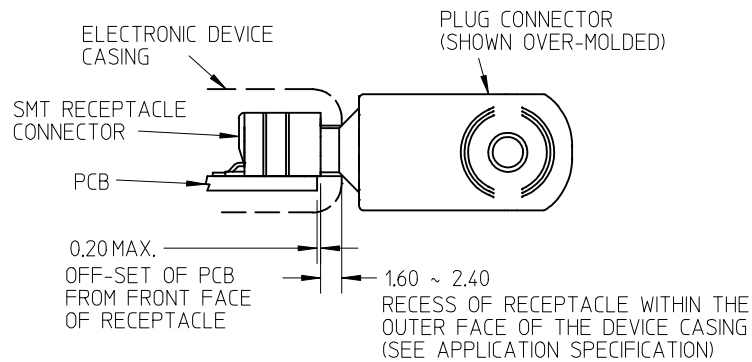
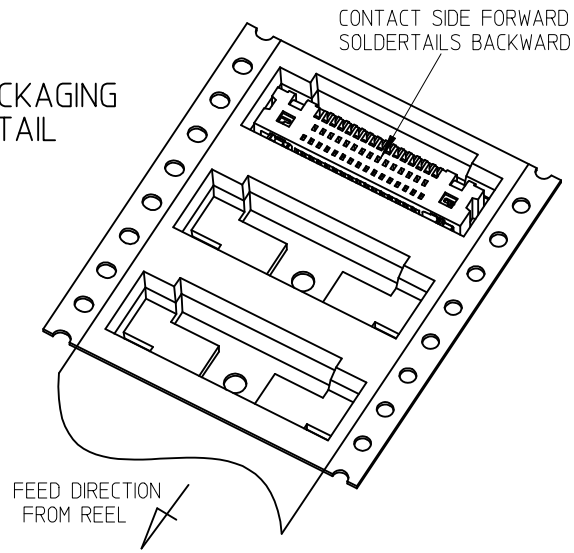
MATERIAL NO.
SEE TABLE

SCALE	DESIGN UNITS	THIRD ANGLE PROJECTION
4:1	METRIC	
TITLE 0.8MM HANDYLINK SMT RECEPTACLE 16 CIRCUIT		
DOCUMENT NO. SD-44828-001		SHEET NO. 1 OF 2

molex

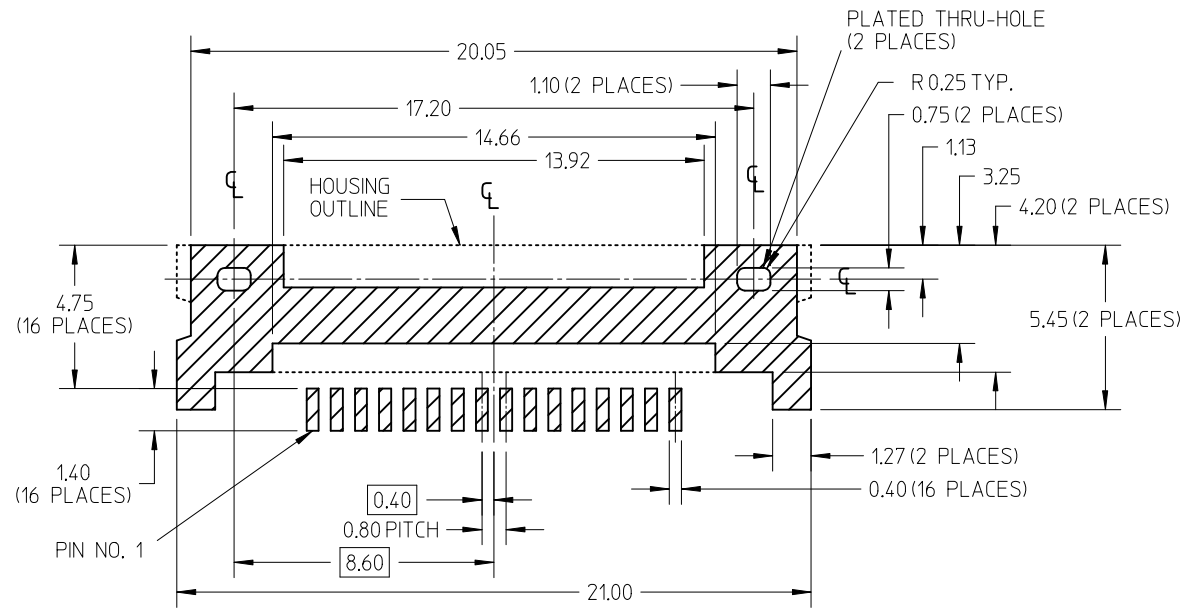
THIS DRAWING CONTAINS INFORMATION THAT IS PROPRIETARY TO MOLEX INCORPORATED AND SHOULD NOT BE USED WITHOUT WRITTEN PERMISSION

**PACKAGING
DETAIL**



**RECOMMENDATIONS FOR CONFIGURATION
OF MATED CONNECTORS**

IMPORTANT: PLEASE REFER TO MOLEX APPLICATION SPECIFICATION AS-44828-001 FOR DETAILED DESIGN LAYOUT AND MATING REQUIREMENTS



RECOMMENDED PCB PAD LAYOUT

NOTE: ALL DIMENSIONS TO BE SYMMETRIC ABOUT THE HOUSING CENTERLINE WITHIN 0.10

SEE SHEET 1 EC NO: UCP2015-4283 DRWN:DMORGAN 2015/04/16 CHKD:BBARKER 2015/04/16 APPR:SMILLER 2015/04/27	QUALITY SYMBOLS ≡=0 ≡=0 ≡=0	GENERAL TOLERANCES (UNLESS SPECIFIED)		DIMENSION STYLE MM ONLY		SCALE 4:1	DESIGN UNITS METRIC	THIRD ANGLE PROJECTION	
			mm	INCH	DRAWN BY MSIMMEL	DATE 2002/09/25	TITLE 0.8MM HANDYLINK SMT RECEPTACLE 16 CIRCUIT		
		4 PLACES ± ---	± ---	± ---	CHECKED BY JCOMERC I	DATE 2002/09/26			
		3 PLACES ± ---	± ---	± ---	APPROVED BY SMILLER	DATE 2010/03/29	molex DOCUMENT NO. SD-44828-001 SHEET NO. 2 OF 2		
		2 PLACES ± 0.10	± ---	± ---	MATERIAL NO. SEE TABLE				
1 PLACE ± 0.10	± ---	± ---	DRAFT WHERE APPLICABLE MUST REMAIN WITHIN DIMENSIONS		SIZE A		THIS DRAWING CONTAINS INFORMATION THAT IS PROPRIETARY TO MOLEX INCORPORATED AND SHOULD NOT BE USED WITHOUT WRITTEN PERMISSION		
0 PLACE ±	±	±							