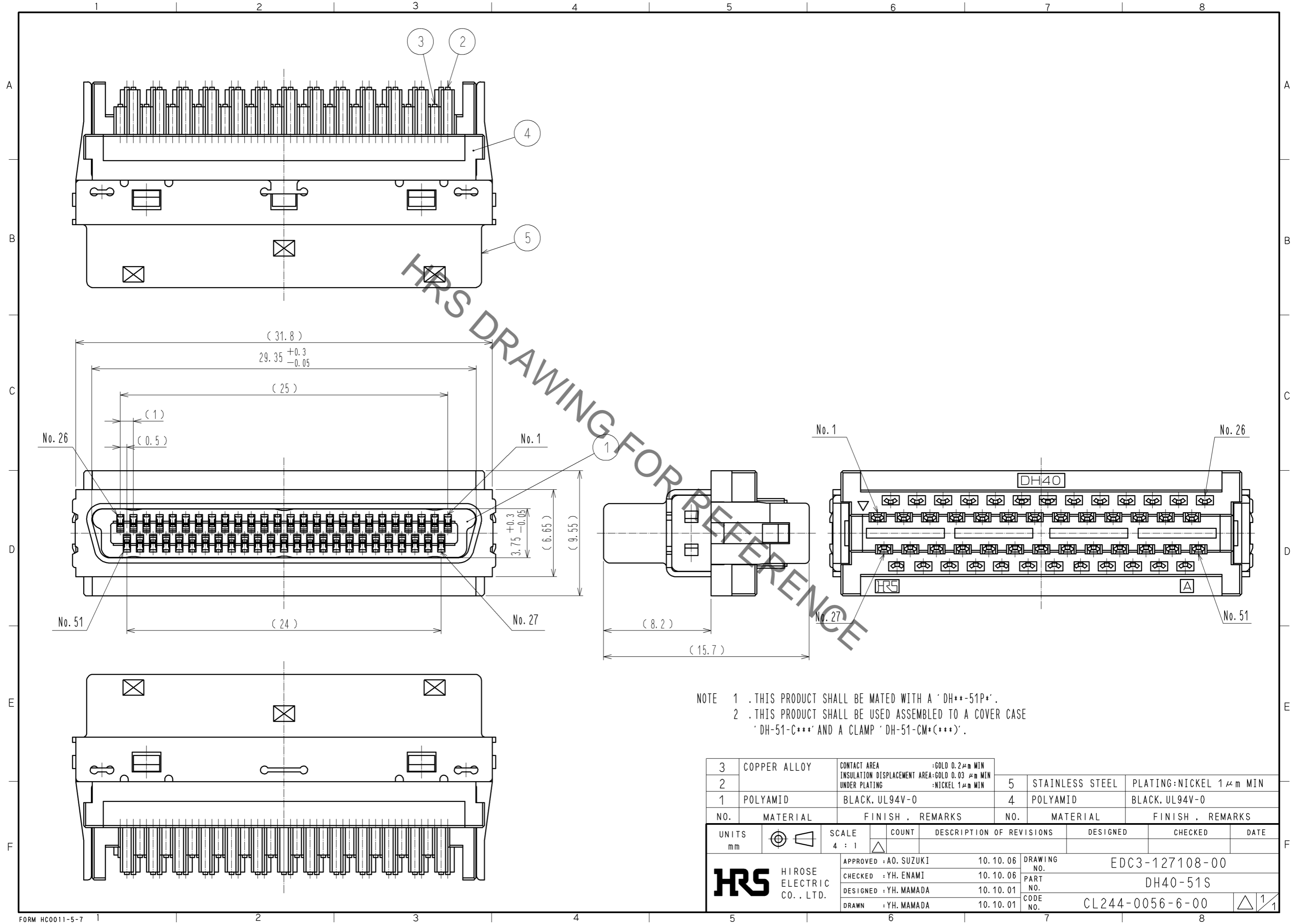


Apr.1.2023 Copyright 2023 HIROSE ELECTRIC CO., LTD. All Rights Reserved.
In case of consideration for using Automotive equipment / device which demand high reliability, kindly contact our sales window correspondents.



NOTE 1 . THIS PRODUCT SHALL BE MATED WITH A 'DH**-51P*'.
2 . THIS PRODUCT SHALL BE USED ASSEMBLED TO A COVER CASE 'DH-51-C***' AND A CLAMP 'DH-51-CM*(***)'.

3	COPPER ALLOY	CONTACT AREA :GOLD 0.2μm MIN INSULATION DISPLACEMENT AREA:GOLD 0.03 μm MIN UNDER PLATING :NICKEL 1μm MIN	5	STAINLESS STEEL	PLATING:NICKEL 1μm MIN		
2			4	POLYAMID	BLACK, UL94V-0		
1	POLYAMID	BLACK, UL94V-0					
NO.	MATERIAL	FINISH . REMARKS	NO.	MATERIAL	FINISH . REMARKS		
UNITS mm		SCALE 4 : 1	COUNT	DESCRIPTION OF REVISIONS	DESIGNED	CHECKED	DATE
HIROSE ELECTRIC CO., LTD.		APPROVED : A0. SUZUKI	10.10.06	DRAWING NO. EDC3-127108-00			
		CHECKED : YH. ENAMI	10.10.06	PART NO. DH40-51S			
		DESIGNED : YH. MAMADA	10.10.01	CODE NO. CL244-0056-6-00			
		DRAWN : YH. MAMADA	10.10.01	1/1			