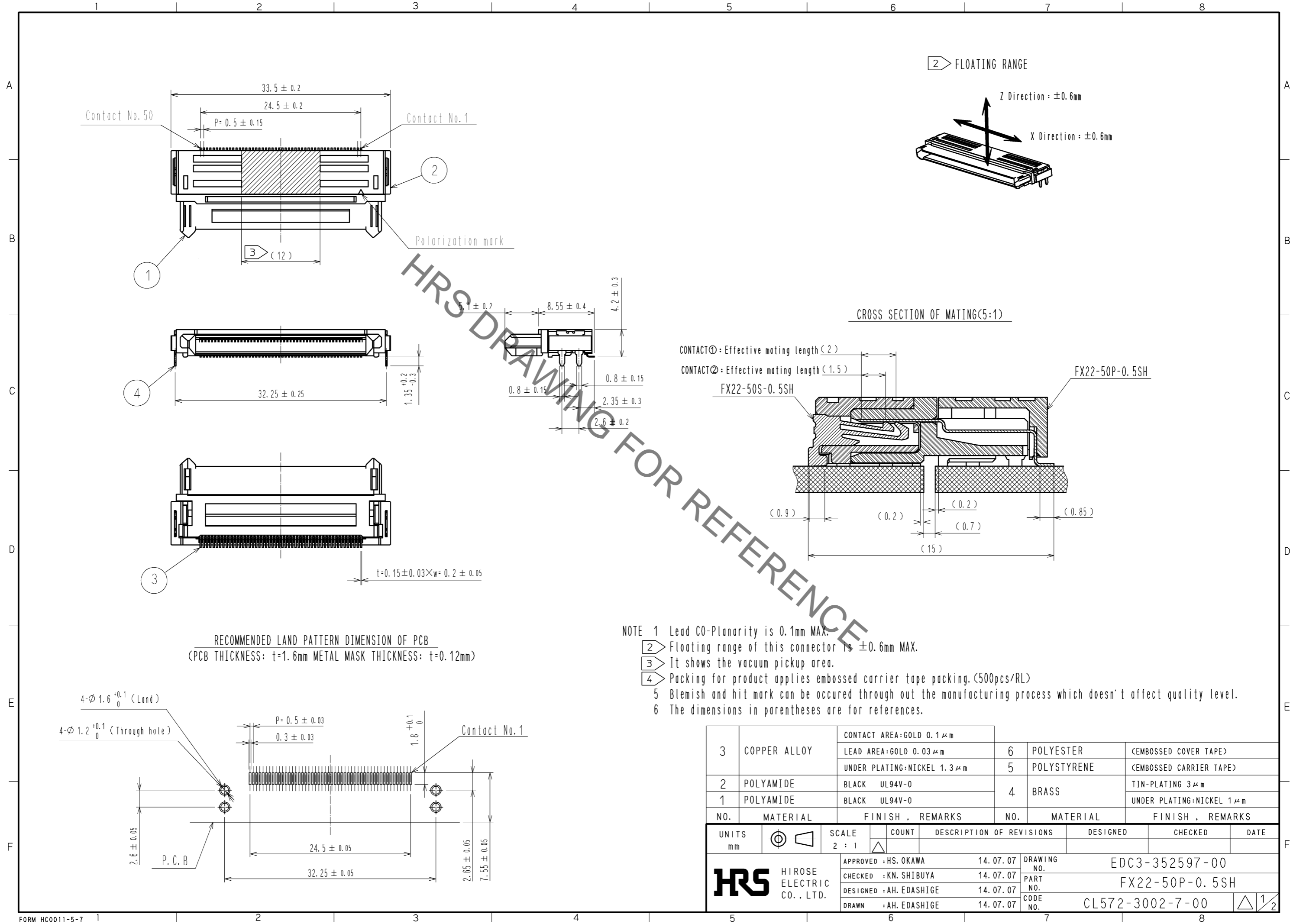


May.1.2023 Copyright 2023 HIROSE ELECTRIC CO., LTD. All Rights Reserved.
In case of consideration for using Automotive equipment / device which demand high reliability, kindly contact our sales window correspondents.



RECOMMENDED LAND PATTERN DIMENSION OF PCB
(PCB THICKNESS: $t=1.6\text{mm}$ METAL MASK THICKNESS: $t=0.12\text{mm}$)

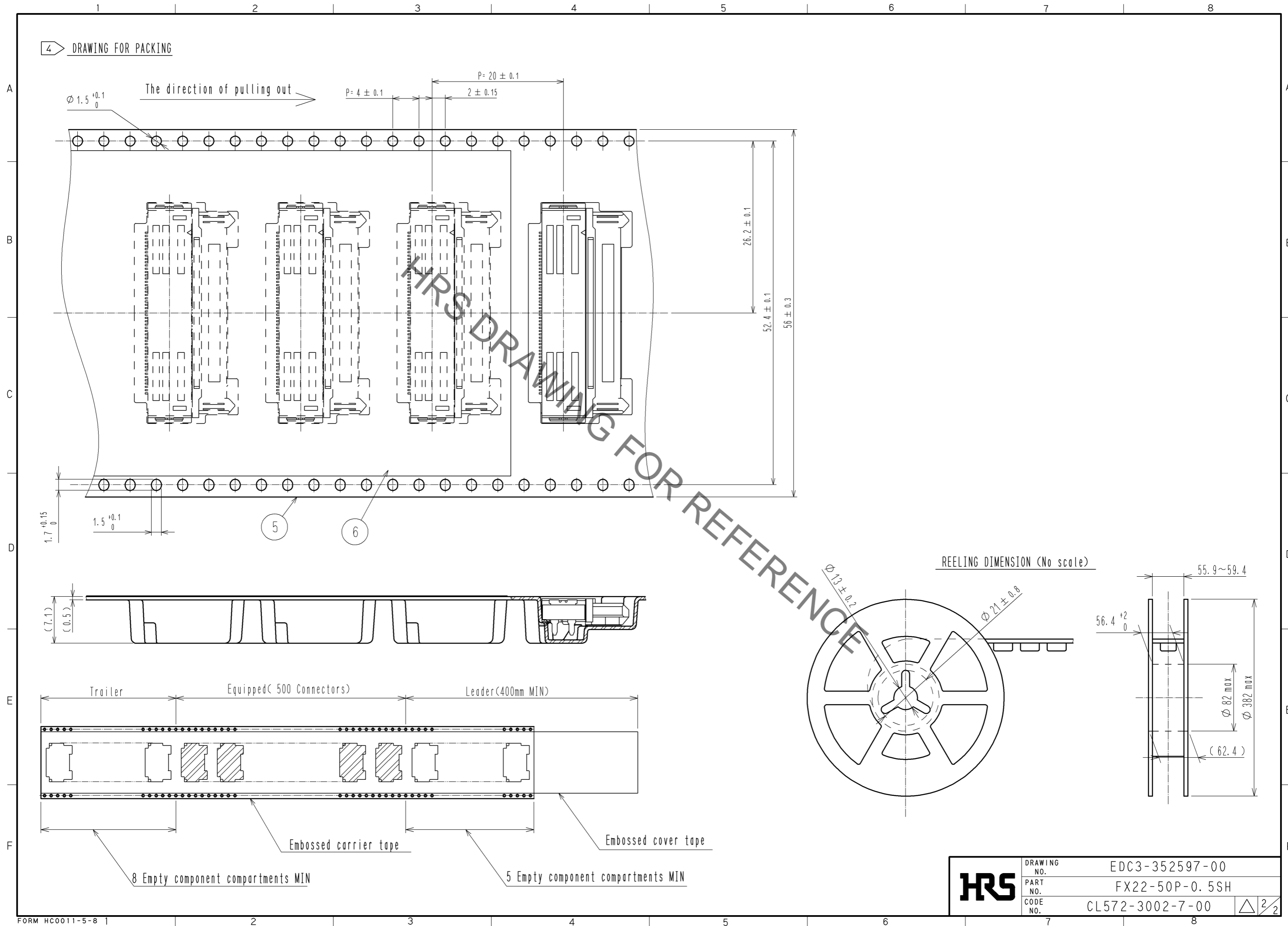
- NOTE 1 Lead CO-Planarity is 0.1mm MAX.
 2 Floating range of this connector is $\pm 0.6\text{mm}$ MAX.
 3 It shows the vacuum pickup area.
 4 Packing for product applies embossed carrier tape packing. (500pcs/RL)
 5 Blemish and hit mark can be occurred through out the manufacturing process which doesn't affect quality level.
 6 The dimensions in parentheses are for references.

NO.	MATERIAL	FINISH	REMARKS	NO.	MATERIAL	FINISH	REMARKS
3	COPPER ALLOY		CONTACT AREA: GOLD $0.1 \mu\text{m}$ LEAD AREA: GOLD $0.03 \mu\text{m}$ UNDER PLATING: NICKEL $1.3 \mu\text{m}$	6	POLYESTER		(EMBOSSED COVER TAPE)
2	POLYAMIDE	BLACK	UL94V-0	5	POLYSTYRENE		(EMBOSSED CARRIER TAPE)
1	POLYAMIDE	BLACK	UL94V-0	4	BRASS		TIN-PLATING $3 \mu\text{m}$ UNDER PLATING: NICKEL $1 \mu\text{m}$

UNITS	SCALE	COUNT	DESCRIPTION OF REVISIONS	DESIGNED	CHECKED	DATE
mm	2 : 1	△				
APPROVED : HS. OKAWA			14.07.07	DRAWING NO. EDC3-352597-00		
CHECKED : KN. SHIBUYA			14.07.07	PART NO. FX22-50P-0.5SH		
DESIGNED : AH. EDASHIGE			14.07.07	CODE NO. CL572-3002-7-00		
DRAWN : AH. EDASHIGE			14.07.07	△ 1/2		

May.1.2023 Copyright 2023 HIROSE ELECTRIC CO., LTD. All Rights Reserved.
 In case of consideration for using Automotive equipment / device which demand high reliability, kindly contact our sales window correspondents.

4 DRAWING FOR PACKING



REELING DIMENSION (No scale)

HRS	DRAWING NO.	EDC3-352597-00	△ 2/2
	PART NO.	FX22-50P-0.5SH	
	CODE NO.	CL572-3002-7-00	