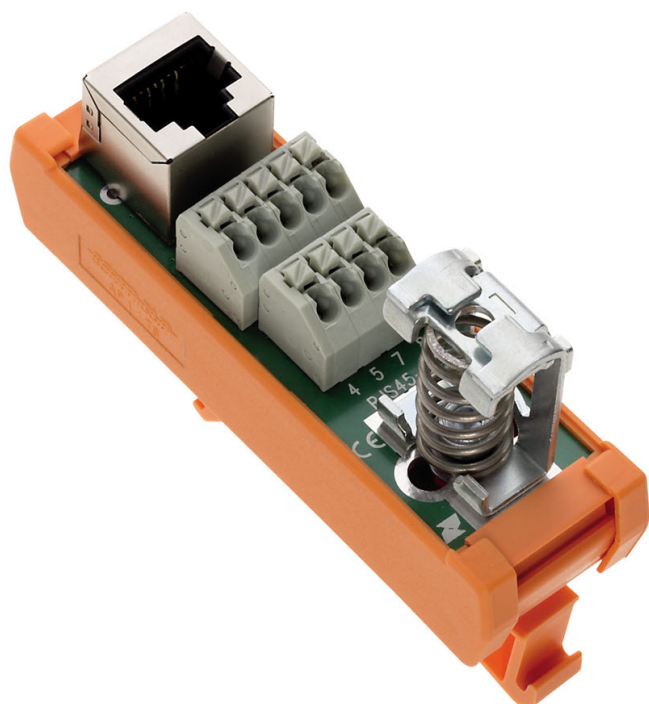


# Data sheet

## 15904.2 RJS45-SH



Interface module for RJ45, Shielded, CAT 5, Push-In connection and RJ45 plug-in connector, Mounting type: Mounting rail TS 35, No. of poles: 9

### Business data

Article number	<u>15904.2</u>
Article name	RJS45-SH
GTIN (EAN)	4044211142148
Packaging unit	1
Quantity unit	PC
Weight per piece (not including packaging)	47.2 g
Weight per piece (including packaging)	61.05 g
Unit of weight	G
Customs number	85369010
Country of origin	NL
Product description	Interface module

### Technical data

#### Dimensions

Length	87 mm
Width	26 mm
Height TS 35/7.5	63 mm

#### Ratings

Overvoltage category	III
Contamination degree	2

#### Connection data

Connection principle	Push-in connection
Number of connections	1
No. of poles	8
Wire cross-section single core (rigid), min.	0.08 mm <sup>2</sup>
Wire cross-section single-core (rigid), max.	1.5 mm <sup>2</sup>
Wire cross-section stranded, min.	0.14 mm <sup>2</sup>
Wire cross-section stranded, max.	1 mm <sup>2</sup>
Wire cross-section stranded with wire-end ferrules, min.	0.14 mm <sup>2</sup>
Wire cross-section stranded with wire-end ferrules, max.	0.5 mm <sup>2</sup>
Stripping length	9 mm

#### Input data

Max. operating voltage AC/DC	125 V
Current load per channel, max.	1 A
Category	CAT 5
Transmission speed max.	100 Mbps

#### Materials

Contact material	Phosphor bronze 1.27 µm Au over 1.27 µm Ni
Flammability class UL 94	V-2
Working temperature, min.	-20 °C
Working temperature, max.	50 °C

---

### Technical data

---

#### Further technical data

Mounting type	TS 35
Connector type	RJ45
Plug-in cycles acc. to standard	750
Test voltage	0.75 kV
Shielded	✓

#### Environmental Product Compliance

REACH Conform	yes
REACH Reference date	2023-01-17
REACH Candidate Substance Note	No
RoHS Conform	yes

---

### Approvals

---

#### Standards and regulations

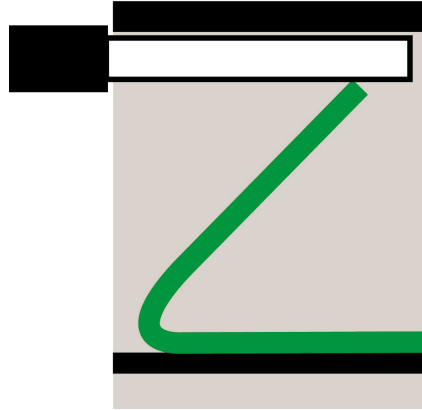
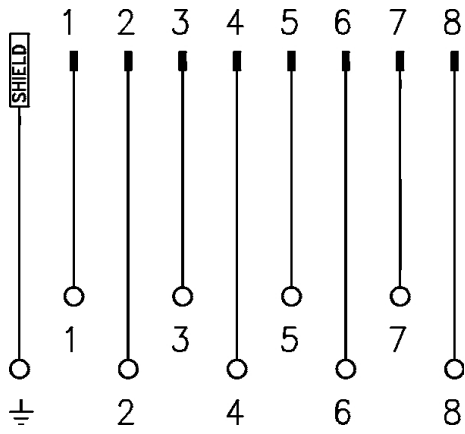
---

Standards / specifications

DIN VDE 0110 / EN 50178

---

### Media



---

### Accessories

---